

Francesco Bendusi

Opera nova de balli

à quattro

Edited by Allen Garvin

Altus
(treble octave clef)

Hawthorne Early Music
FB-1
20130704

©2013 — Allen Garvin
Some rights reserved

Hawthorne Early Music Publications, Dallas, TX

This work is licensed under the Creative Commons Attribution-ShareAlike 3.0 US License. To view a copy of this license, visit <http://creativecommons.org/licenses/by-sa/3.0/us> or send a letter to Creative Commons, 444 Castro Street, Suite 900, Mountain View, California, 94041, USA.

The typeface used is Liberation Serif, licensed under the GNU General Public License. This document was typeset using XeLaTeX and Lilypond.

10 09 08 07 06 05 04 03 02 01 19 18 17 16 15 14 13

Pass'e mezo ditto il romano

Musical score for "Pass'e mezo ditto il romano". The score is written in treble clef with a common time signature (C). It consists of three staves of music. The first staff begins with a treble clef and a common time signature. The music is written in a single line. The second staff continues the melody. The third staff concludes the piece with a double bar line and a sharp sign on the bottom line. Measure numbers 5, 10, and 15 are indicated above the staves.

Moschetta

Musical score for "Moschetta". The score is written in treble clef with a common time signature (C). It consists of four staves of music. The first staff begins with a treble clef and a common time signature. The music is written in a single line. The second staff continues the melody. The third staff continues the melody. The fourth staff concludes the piece with a double bar line and a sharp sign on the bottom line. Measure numbers 5, 10, 15, and 20 are indicated above the staves. A 6/2 time signature is indicated above the fourth staff.

Desiderata

Musical score for "Desiderata". The score is written in treble clef with a common time signature (C). It consists of three staves of music. The first staff begins with a treble clef and a common time signature. The music is written in a single line. The second staff continues the melody. The third staff concludes the piece with a double bar line and a sharp sign on the bottom line. Measure numbers 5, 10, and 15 are indicated above the staves. A 6/2 time signature is indicated above the third staff.

Pietoso

Musical score for 'Pietoso' in G major, 3/4 time. The score consists of three staves. The first staff begins with a treble clef, a key signature of one sharp (F#), and a common time signature (C). The melody starts on G4 and proceeds with a series of quarter and eighth notes. Measure numbers 5, 10, and 15 are indicated above the staff. The second staff continues the melody, with measure 10 marked. The third staff concludes the piece, with measure 15 marked and a final double bar line.

Speranza

Musical score for 'Speranza' in G major, 3/4 time. The score consists of four staves. The first staff begins with a treble clef, a key signature of one sharp (F#), and a common time signature (C). The melody starts on G4 and proceeds with a series of quarter and eighth notes. Measure numbers 5, 10, 15, and 20 are indicated above the staff. The second staff continues the melody, with measure 10 marked. The third staff continues the melody, with measure 15 marked. The fourth staff concludes the piece, with measure 20 marked and a final double bar line.

La mala vecchie

Musical score for 'La mala vecchie' in G major, 3/4 time. The score consists of two staves. The first staff begins with a treble clef, a key signature of one sharp (F#), and a common time signature (C). The melody starts on G4 and proceeds with a series of quarter and eighth notes. Measure numbers 5 and 10 are indicated above the staff. The second staff continues the melody, with measure 10 marked.

La falilela

Musical score for 'La falilela' in G major, 3/4 time. The score consists of three staves. The first staff begins with a treble clef, a key signature of one sharp (F#), and a common time signature. The melody starts on G4 and moves through various intervals, including a half note G, a quarter note A, and a dotted quarter note B. A measure rest of 8 is indicated at the beginning. A measure rest of 5 is shown above the staff at the end of the first line. The second staff continues the melody with a measure rest of 10. The third staff concludes the piece with a measure rest of 15 and a 6/2 time signature change.

La bruna

Musical score for 'La bruna' in G major, 3/4 time. The score consists of three staves. The first staff begins with a treble clef, a key signature of one sharp (F#), and a common time signature. The melody starts on G4 and moves through various intervals, including a half note G, a quarter note A, and a dotted quarter note B. A measure rest of 8 is indicated at the beginning. A measure rest of 5 is shown above the staff at the end of the first line. The second staff continues the melody with a measure rest of 10. The third staff concludes the piece with a measure rest of 15 and a 6/2 time signature change.

E dove vastu o bon solda

Musical score for 'E dove vastu o bon solda' in G major, 3/4 time. The score consists of three staves. The first staff begins with a treble clef, a key signature of one sharp (F#), and a common time signature. The melody starts on G4 and moves through various intervals, including a half note G, a quarter note A, and a dotted quarter note B. A measure rest of 8 is indicated at the beginning. A measure rest of 5 is shown above the staff at the end of the first line. The second staff continues the melody with a measure rest of 10. The third staff concludes the piece with a measure rest of 15 and a 6/2 time signature change.

Chi non ha martello

Musical score for 'Chi non ha martello' in G major, 3/4 time. The score consists of one staff. The first staff begins with a treble clef, a key signature of one sharp (F#), and a common time signature. The melody starts on G4 and moves through various intervals, including a half note G, a quarter note A, and a dotted quarter note B. A measure rest of 8 is indicated at the beginning. A measure rest of 5 is shown above the staff at the end of the line.

Musical score for 'Opera nova de balli (altus)'. It consists of three staves of music in a single system. The first staff begins with a treble clef, a key signature of one flat (B-flat), and a common time signature. The music is written in a simple, melodic style. Measure numbers 10, 15, and 20 are indicated above the staves. A key signature change to two flats (B-flat and E-flat) occurs at measure 15. At measure 20, there is a time signature change to 6/2. The piece concludes with a double bar line and a sharp sign (#) at the end of the final measure.

Incognito

Musical score for 'Incognito'. It consists of four staves of music in a single system. The first staff begins with a treble clef, a key signature of one flat (B-flat), and a common time signature. The music is written in a simple, melodic style. Measure numbers 5, 10, 15, and 20 are indicated above the staves. The piece concludes with a double bar line at measure 25.

Bella foresta

Musical score for 'Bella foresta'. It consists of four staves of music in a single system. The first staff begins with a treble clef, a key signature of one flat (B-flat), and a common time signature. The music is written in a simple, melodic style. Measure numbers 5, 10, 15, and 20 are indicated above the staves. At measure 20, there is a time signature change to 6/2. The piece concludes with a double bar line at the end of the final measure.

Galante

Musical score for 'Galante' in G major, 3/4 time. The score consists of three staves. The first staff begins with a treble clef, a G-clef, and a common time signature. The melody starts with a dotted half note G4, followed by quarter notes A4, B4, and C5. The second staff continues with quarter notes D5, E5, and F5, then a dotted half note G5. The third staff continues with quarter notes A5, B5, and C6, then a dotted half note D6. The piece concludes with a double bar line. Fingerings 5, 10, and 15 are indicated above the notes.

Fusta

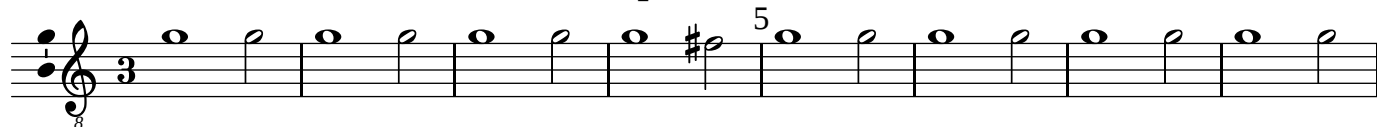
Musical score for 'Fusta' in G major, 3/4 time. The score consists of three staves. The first staff begins with a treble clef, a G-clef, and a common time signature. The melody starts with a dotted half note G4, followed by quarter notes A4, B4, and C5. The second staff continues with quarter notes D5, E5, and F5, then a dotted half note G5. The third staff continues with quarter notes A5, B5, and C6, then a dotted half note D6. The piece concludes with a double bar line. Fingerings 5, 10, and 15 are indicated above the notes. Sharps are placed above the notes G5 and D6.

Animoso

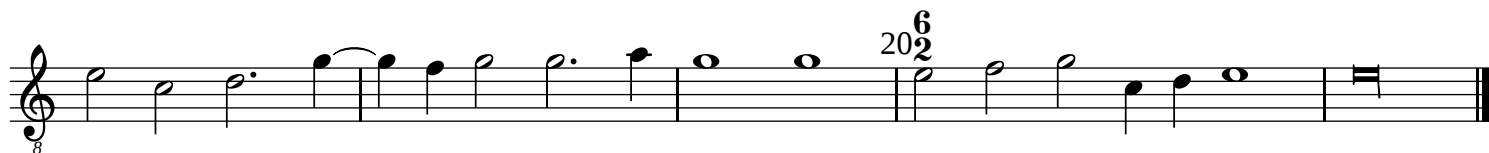
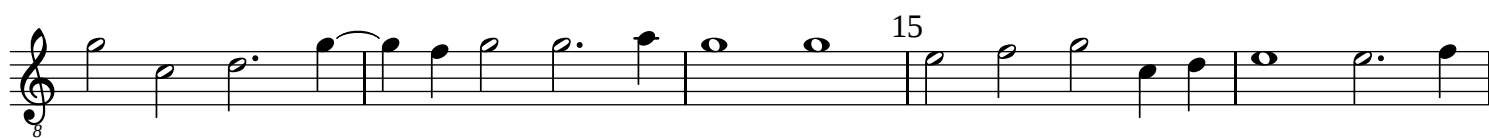
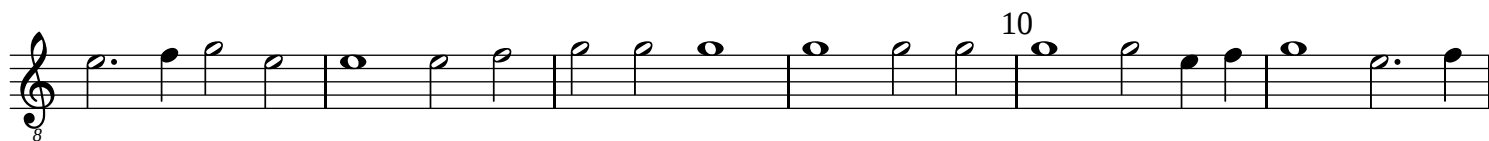
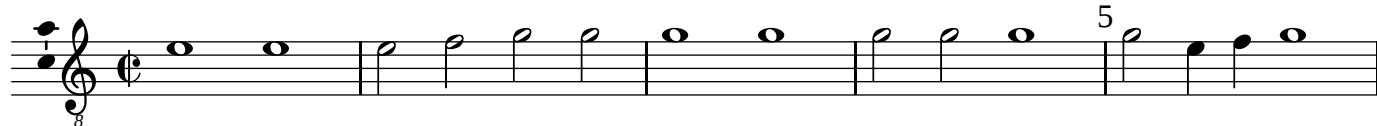
Musical score for 'Animoso' in G major, 3/4 time. The score consists of three staves. The first staff begins with a treble clef, a G-clef, and a common time signature. The melody starts with a dotted half note G4, followed by quarter notes A4, B4, and C5. The second staff continues with quarter notes D5, E5, and F5, then a dotted half note G5. The third staff continues with quarter notes A5, B5, and C6, then a dotted half note D6. The piece concludes with a double bar line. Fingerings 5, 10, and 15 are indicated above the notes.



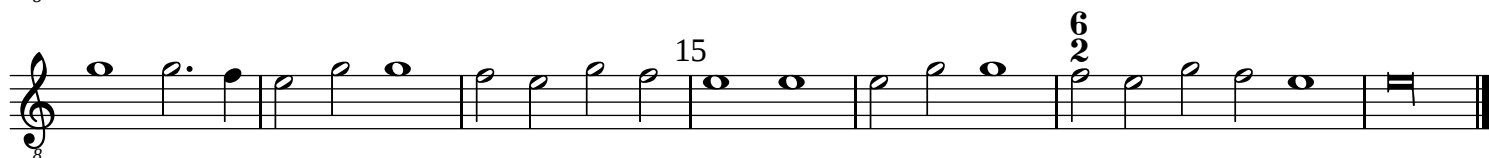
Cortesa padoana



Bandera



Gioia



La giovenetta

Musical score for 'La giovenetta' in G minor, 8/8 time. The score consists of four staves of music. The first staff begins with a treble clef, a key signature of one flat (B-flat), and a common time signature of 8. The melody features a series of eighth and quarter notes, with a fermata over the fifth measure. Measure numbers 5, 10, 15, and 20 are indicated above the staff. The piece concludes with a double bar line and repeat dots.

Il ben ti vegna

Musical score for 'Il ben ti vegna' in G major, 8/8 time. The score consists of five staves of music. The first staff begins with a treble clef, a key signature of one sharp (F-sharp), and a common time signature of 8. The melody features a series of eighth and quarter notes, with a fermata over the fifth measure. Measure numbers 5, 10, 15, 20, and 25 are indicated above the staff. The piece concludes with a double bar line and repeat dots.

Pass'e mezo ditto il compasso

Musical score for 'Pass'e mezo ditto il compasso' in G major, 8/8 time. The score consists of two staves of music. The first staff begins with a treble clef, a key signature of one sharp (F-sharp), and a common time signature of 8. The melody features a series of eighth and quarter notes, with a fermata over the fifth measure. Measure numbers 5 and 10 are indicated above the staff. The piece concludes with a double bar line and repeat dots.

