

# I stood on de Ribber ob Jerdon

Negro Spiritual  
Arranged by

H. T. BURLEIGH

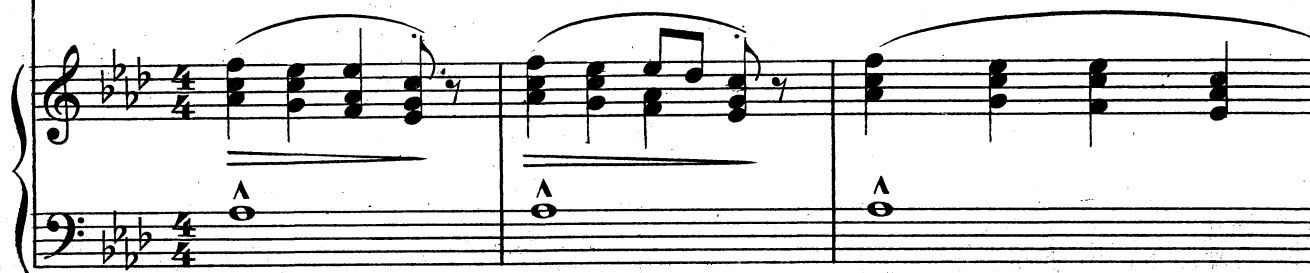
Andante cantabile

Voice



I stood on de rib-ber ob

Piano



Jer - don, To see dat ship come sail - in' o - ber,

Stood on de rib-ber ob Jer - don, To see dat ship sail by.

Oh, \*)mou'ner doan yo' weep! W'en yo' see dat ship come

sail - in' o - ber, Oh, mou'ner doan yo' weep! W'en yo'

see dat ship sail by.

\*)-mourner

O sis-ter } yo' bet-tah be read-y, To  
broth-er }

*sva*.....

*p*

*mf*

Detailed description: This system contains the first line of music. The vocal line is in a treble clef with a key signature of three flats (B-flat, E-flat, A-flat) and a common time signature. It begins with a whole rest, followed by a quarter note G4, a quarter note A4, a quarter note B-flat4, a quarter note C5, a quarter note B-flat4, a quarter note A4, and a quarter note G4. The lyrics are "O sis-ter } yo' bet-tah be read-y, To". The piano accompaniment consists of two staves. The right hand plays chords in the treble clef, and the left hand plays chords in the bass clef. Dynamics include *p* and *mf*. A *sva* (sustained) marking is present above the piano part.

see dat ship come sail-in' o-ber, Sis-ter } yo' bet-tah be  
Broth-er }

*sva*.....

Detailed description: This system contains the second line of music. The vocal line continues with a quarter note G4, a quarter note A4, a quarter note B-flat4, a quarter note C5, a quarter note B-flat4, a quarter note A4, and a quarter note G4. The lyrics are "see dat ship come sail-in' o-ber, Sis-ter } yo' bet-tah be Broth-er }". The piano accompaniment continues with chords in both hands. A *sva* marking is present above the piano part.

read-y, To see dat ship sail by.

Detailed description: This system contains the third line of music. The vocal line continues with a quarter note G4, a quarter note A4, a quarter note B-flat4, a quarter note C5, a quarter note B-flat4, a quarter note A4, and a quarter note G4. The lyrics are "read-y, To see dat ship sail by.". The piano accompaniment concludes with chords in both hands.

Oh mo'n-er doan yo' weep, Wen yo' see dat ship come sail - in' o - ber,

*mf*

Shout Glo - ry Hal - le - lu - jah! Wen yo' see dat ship sail

by. I stood on de rib-ber ob Jer - don!

*pp*

*a tempo* *rit.* *pp* *dim.* *ppp*