

# Suite B-Dur

[ FaWV K: B6 ]

J.F. Fasch

## Ouverture

Grave

Oboe 1

3

3

3

3

3

5

6

6

tr

tr

3

*p* 3

[Allegro]

*f* 3

*p*

26

33

*p*

*pp*

*f*

*p*

40

*f*

*p*

47

*f*

4

57

*p*

*f*

Solo

64

70

Tutti

77

83  *p*

89  *f* Solo

101  **Tutti** *p* *f* Solo

109 

116  **Tutti** *f*

122  Solo *f*

128  **Tutti** *f*

134  *p* *f* 3

143 

147  *p* *f*

153  *tr* **Grave** *f*

158  3

161  6 *tr*

# Air Largo

Musical score for "Air Largo" in G minor, 3/4 time. The score consists of six staves of music. The first staff begins with a treble clef, a key signature of two flats (B-flat and E-flat), and a common time signature. The tempo is marked "Largo". The score includes dynamic markings of *p* (piano) and *f* (forte), as well as articulation marks such as accents and trills. A triplet of eighth notes is indicated with a "3" above the notes. The piece concludes with a double bar line and repeat dots.

# Gavotte 1

Musical score for "Gavotte 1" in G minor, 3/4 time. The score consists of six staves of music. The first staff begins with a treble clef, a key signature of two flats (B-flat and E-flat), and a common time signature. The tempo is marked "Largo". The score includes dynamic markings of *f* (forte) and *Solo*. A section marked "Tutti" begins at measure 36. The piece concludes with a double bar line and repeat dots.

# Gavotte 2

7

14

21

Gavotte 1 repetatur

# Air Andante

21

Fine

25

31

38

44

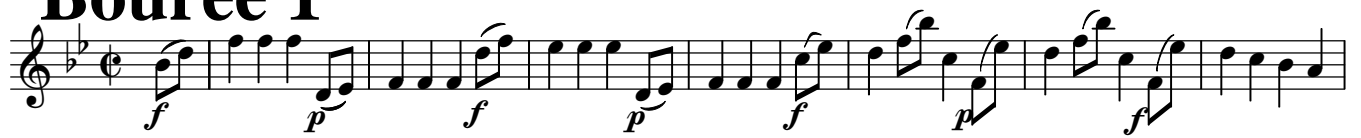
50

56

62

68

# Bouree 1



Bouree 2 tacet

# Menuet 1



# Menuet 2



Menuet 1 repetatur