

Symphony in C major

I. Horn in F

I.

Franz Asplmayer
Edited by Alonso del Arte

Maestoso Andante $\text{♩} = 60$
Cello

9 3

19 *f* *p* *f* *f*

29 2

38 3

48 a 2

58 1. 3

68 2 2 *fp*

79 a 2

fp *fp*

Symphony in C major

88

1. K 5 L a 2

f

This musical staff covers measures 88 to 99. It begins with a treble clef and a key signature of one sharp (F#). The notation consists of eighth notes with stems. Above the staff, there are performance markings: a first ending bracket labeled '1.' spanning measures 91-92, a box containing the letter 'K' above measure 93, a '5' above measure 94, a box containing the letter 'L' above measure 95, and 'a 2' below measure 95. A dynamic marking of *f* (forte) is placed below the staff at the start of measure 95.

100

2 M 1.

This musical staff covers measures 100 to 110. It continues with the same treble clef and key signature. The notation includes eighth notes and quarter notes. Above the staff, there is a second ending bracket labeled '2' spanning measures 103-104, followed by a box containing the letter 'M' above measure 105 and '1.' below measure 105.

111

N

This musical staff covers measures 111 to 119. The notation features eighth notes and quarter notes. Above the staff, there is a box containing the letter 'N' above measure 117. A fermata is placed over the note in measure 117.

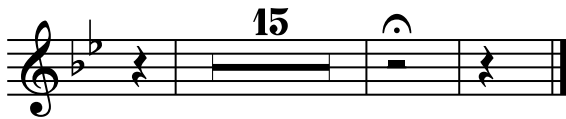
120

This musical staff covers measures 120 to 127. The notation includes eighth notes and quarter notes, ending with a double bar line. The key signature remains one sharp.

I. Horn in F

II.

Andantino ♩ = 65



I. Horn in F

III.

Allegro assai ♩ = 120

7 **A** \circ 2

15 **B** P

22 \circ $\overset{\circ}{\circ}$ a 2

29 **C** Q 1.

37 **D** R

44 **E** S

52 **F** T 2

60 **G** U