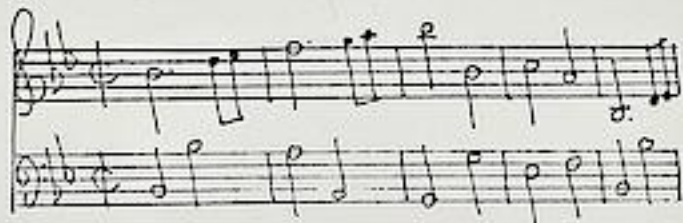


Stamitz, Johann (1717-1757)

BRD DS Mus.ms 1029/7

Sinfonia a 4/Violino primo/Violino secondo/Viola e/Basso/
del Signor Steinmetz./ (B-dur)



Allabreve ♩ B-dur -
Andante 2/4 Es-dur -
Allegro 3/8 B-dur.

Ms.ca.1750. 30 x 21,5 cm.

4 St.:vi 1,2,vla,b(bez.). je 1 Bl.

Als Komponistennamen war ursprünglich Cammerlocher angegeben,
dann aber durchstrichen.

Themat.Kat.DTB III/1, B-dur Nr.4. - Themat.Kat.Breitkopf I 1762.

Os
Landes-Bibliothek
Mus.ms
1029
Bd. 7
Darmstadt

Mus 1029 Nr 7
7.

Sinfonia a 4

Violino primo
Violino secondo
Viola e
Basso

fol (4) u

Lammicolaro

Del Signor ~~Antonio~~
Steinmetz



1029/7

Violino primo

1

Allabreve



Liolti.

Andante

Handwritten musical score for the *Andante* section, consisting of six staves of music. The notation includes various rhythmic values, accidentals, and articulation marks.

Allegro.

Handwritten musical score for the *Allegro.* section, consisting of six staves of music. The notation is more rhythmic and includes various articulation marks.

Il fine.

Allabreve

Handwritten musical score for Violino secondo, Allabreve tempo. The score consists of 11 staves of music in G major and 3/8 time. The notation includes various note values, rests, and dynamic markings. The piece concludes with a double bar line and a decorative flourish.



Sivolti.



Andante

fin 8

Allegro

Il fine.

1029/7

Viola

3

Allabreve



Si volti.

Andante

Allegro

Il fine

1029/7

Basso

4

Allabreve



Sivolti.

Andante

Allegro

Il fine.