

Christe à due

del Sig.^{no} Luigi Barbieri

10

10.

Cartina

Christe à Due Voci

Soprano, e Basso.

Con Strumentine

Del

Signor Luigi Barbieri



Violini

Flauti

Viola

Soprano

Basso

Organo

Andantino

Handwritten musical score on ten staves. The top staff contains a melodic line with various notes and rests. The second staff contains a similar melodic line. The third staff contains a few notes and rests. The fourth, fifth, and sixth staves are mostly empty with some vertical bar lines. The seventh and eighth staves contain diagonal slash marks. The ninth staff contains a melodic line with notes and rests. The tenth staff is empty.

Handwritten musical score on aged paper, featuring multiple staves. The top section contains a complex melodic line with dynamic markings such as *pp* and *fu.* (likely *ff*). Below this, several staves are marked with diagonal slashes, indicating they are either unused or contain obscured notation. The bottom section shows a single staff with a simple melodic line.

This image shows a page of handwritten musical notation on ten staves. The notation is written in black ink on aged, slightly yellowed paper. The first three staves contain a complex melodic line, likely for a violin or flute, featuring many slurs and dynamic markings such as *f* (forte) and *p* (piano). The fourth staff contains a few notes, while the fifth through eighth staves are mostly empty, with only vertical bar lines indicating measure divisions. The ninth staff contains a few notes and a dynamic marking *p*. The tenth staff is empty. There are some scribbles and corrections on the left side of the page, particularly near the first staff. A small number '5' is written in the top right corner, and another '5' is visible in the bottom right corner.

A handwritten musical score on aged paper. The score consists of several systems of staves. The top system has two staves with musical notation. The middle section contains four empty staves. The bottom system has four staves with musical notation and lyrics. The lyrics are written in a cursive hand and are repeated across the staves. The lyrics are: "Christe e = Leison", "Christe e = Leison", "Christe e = Leison", and "Christe e = Leison". The notation includes notes, rests, and bar lines. There are some markings on the staves, possibly indicating fingerings or breath marks.

Christe e = Leison

Christe e = Leison

Christe e =

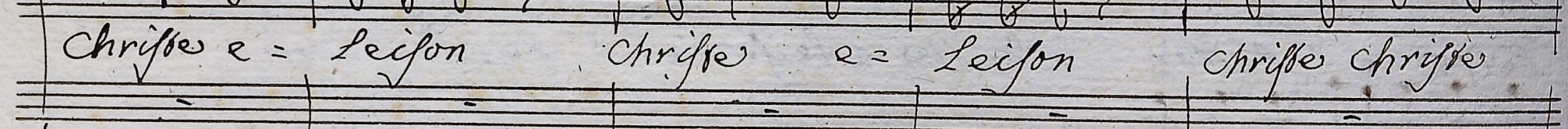
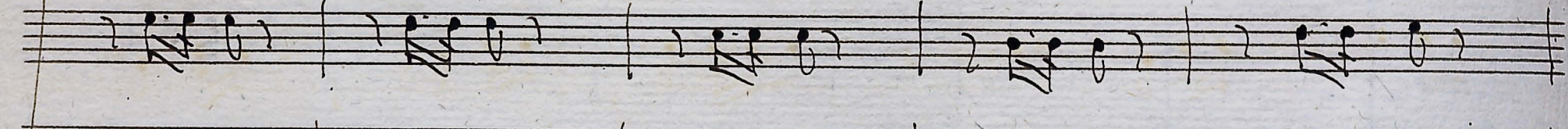
Christe e = Leison

Christe e = Leison

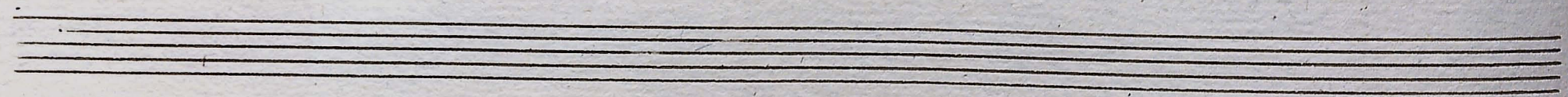
Christe e =

Leison e = Leison Christus e Leison es Leis = son

Leison es Leison



Christe e = Leison Christe e = Leison Christe Christe



Handwritten musical score on ten staves. The top four staves contain melodic lines with various notes and rests. The fifth and sixth staves are empty staves with a double bar line across each. The seventh staff contains a vocal line with lyrics: "e leijon chrisse e lei = von e lei = von e lei = von e lei =". The eighth staff contains the lyrics: "e = leijon e leijon e =". The bottom two staves are empty.

son e lei = son e lei son e lei son e lei son e lei son

Leison e = Leison e = Leison e = Leison e = Leison e =

Detailed description: This is a page of handwritten musical notation on aged paper. The page is numbered '10' in the top left corner. It features ten staves of music. The first four staves contain complex rhythmic patterns with many beamed notes and stems. The fifth and sixth staves are marked with a double slash, indicating they are empty or crossed out. The seventh and eighth staves contain a vocal line with lyrics written below the notes. The lyrics are: 'son e lei = son e lei son e lei son e lei son e lei son' on the seventh staff, and 'Leison e = Leison e = Leison e = Leison e = Leison e =' on the eighth staff. The final two staves at the bottom of the page are also marked with a double slash.

for *fmo*

eleison Chri = ste e = le = i son

leison e = lei = son e = le = i son

This image shows a page of handwritten musical notation on ten staves. The notation is written in black ink on aged, slightly yellowed paper. The first two staves at the top contain complex musical notation, including many beamed notes and rests, suggesting a fast or intricate passage. The third and fourth staves are completely crossed out with diagonal lines, indicating they were either unused or revised. The fifth and sixth staves contain a single melodic line with some rests. The seventh and eighth staves are also crossed out with diagonal lines. The ninth and tenth staves contain a single melodic line, similar in style to the fifth and sixth staves. A large bracket on the left side of the page groups the first six staves together. There are some handwritten annotations, such as a 'p' (piano) marking on the second staff and some curved lines on the third staff. The overall appearance is that of a working draft or a composer's sketch.

Handwritten musical score for the first part of the piece. It consists of several staves. The top two staves contain complex rhythmic patterns with many beamed notes. The third and fourth staves show simpler rhythmic accompaniment. The fifth and sixth staves are marked with a large 'X' through them, indicating they are to be omitted or are a placeholder. The seventh staff begins the vocal entry with the lyrics 'Christe eleison'.

Handwritten musical score for the second part of the piece. It features two vocal lines and a basso continuo line. The lyrics are 'Christe eleison' repeated. The notation includes notes, rests, and some decorative flourishes. The lyrics are written in a cursive hand below the notes.

Christe eleison Christe eleison Christe eleison

Christe eleison Christe eleison Christe eleison

Handwritten musical score consisting of several staves. The top section features a complex melodic line with many beamed notes. Below this, there are two staves with lyrics written in cursive: "Christe Christe eleison Christe Christe Christe Christe eleison von elei =". The bottom section contains more musical notation, including a bass line and a grand staff with a double bar line.

Christe Christe eleison Christe Christe Christe Christe eleison von elei =
 Christe Christe eleison Christe Christe Christe Christe eleison elei =

Handwritten musical score for the first part of the piece, consisting of six staves. The top two staves contain a complex melodic line with many sixteenth and thirty-second notes. The third staff has a simpler melodic line. The fourth and fifth staves are crossed out with diagonal lines, indicating they are not to be played.

Handwritten musical score for the second part of the piece, consisting of four staves. The first two staves contain a vocal line with lyrics. The third staff contains a bass line. The fourth staff is empty.

Son
 Son
 Christophe
 Christophe
 e = Leijon
 e = Leijon

Handwritten musical score on aged paper. The score consists of approximately 12 staves. The top two staves contain complex musical notation with many beamed notes and rests. The middle section features four staves with double bar lines and diagonal slashes, indicating a break or a specific performance instruction. The bottom section contains two staves with lyrics written in cursive: "Christe eleison" repeated four times. The handwriting is fluid and characteristic of 18th or 19th-century manuscript notation.

Christe eleison

Christe eleison

Christe eleison

Christe eleison

Christe e = Peison Christe e = Peison Christe e =

Handwritten musical notation on a single staff, featuring various rhythmic patterns and notes.

Handwritten musical notation on a single staff, featuring various rhythmic patterns and notes.

Handwritten musical notation on a single staff, featuring various rhythmic patterns and notes.

Handwritten musical notation on a single staff, featuring various rhythmic patterns and notes.

Handwritten musical notation on a single staff, featuring various rhythmic patterns and notes.

Handwritten musical notation on a single staff, featuring various rhythmic patterns and notes.

Handwritten musical notation on a single staff, featuring various rhythmic patterns and notes.

Handwritten musical notation on a single staff, featuring various rhythmic patterns and notes.

Leison e = leison Chrisse e = leison e = leison

Handwritten musical notation on a single staff, featuring various rhythmic patterns and notes.

Empty musical staves at the bottom of the page.

Handwritten musical notation on a single staff, featuring complex rhythmic patterns and a '6' time signature.

Handwritten musical notation on a single staff, continuing the complex rhythmic patterns from the previous staff.

Handwritten musical notation on a single staff, showing a transition to a simpler rhythmic pattern with a '6' time signature.

Handwritten musical notation on a single staff, continuing the simpler rhythmic pattern.

Two empty musical staves with diagonal slash marks, indicating they are unused or reserved.

Two empty musical staves with diagonal slash marks, indicating they are unused or reserved.

Two empty musical staves with diagonal slash marks, indicating they are unused or reserved.

Handwritten musical notation on a single staff, featuring a simple melody with lyrics written below.

Christe Christe e = leison e = leison e = leison e =

Handwritten musical notation on a single staff, continuing the simple melody from the previous staff.

Handwritten musical score on aged paper, featuring multiple staves. The top section contains complex musical notation with various notes, rests, and accidentals. The middle section consists of several staves with diagonal slash marks, indicating a break or a specific performance instruction. The bottom section includes lyrics written in cursive: "Christe eleison eleison". The word "Christe" is positioned above the first staff of the bottom section, and "eleison eleison" is written across the second and third staves of the bottom section. The notation below the lyrics consists of simple musical notes on a staff.

Christe eleison eleison

eleison

son e = lei = son e lei = son e lei = son e lei = son e lei son

e = lei son e = lei son e = lei son e = lei son e =

e leijon e leijon e leijon e leijon e le = i =

Leijon e = leijon e = leijon e = leijon e le = i =

von e = le = = = i = von e lei = von e lei = von

von e = le = = = i = von e lei = von e lei = von

Handwritten musical notation on five staves. The first staff has two '6' markings above it. The notation includes various note values, stems, and beams, with some notes beamed together in groups. The staves are connected by a large bracket on the left side.

122.

Handwritten musical notation on four staves. The notation consists of vertical bar lines and diagonal slashes across the staves, indicating rests or specific rhythmic patterns. The staves are connected by a large bracket on the left side.

Handwritten musical notation on one staff. It begins with a '9' marking and contains several notes with stems and beams, similar to the notation in the first section.

Two empty musical staves at the bottom of the page.