

Sonate für Oboe, Baritonoboe und Basso continuo F-Dur

Fagott

Bearbeitung der Sonate op.1 Nr.2

Gottfried Finger

Adagio



7



13



Allegro



6



10



15



20



25



Adagio8 **Allegro**

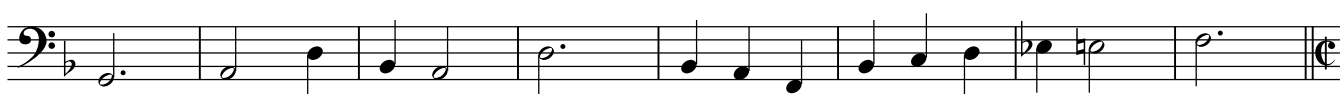
13



18



27

35 **Allegro**

40

45 **Adagio**

48



Adagio

5



9

**13 Allegro**

28



40



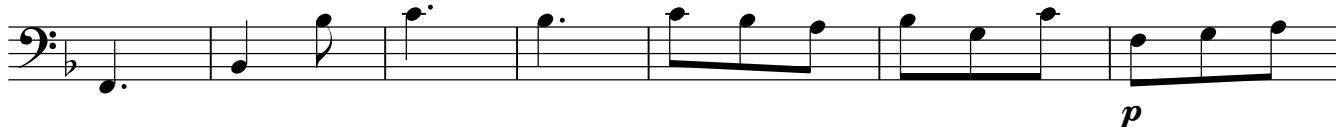
50



60



69



76

**83 Adagio**