



B. 3

Messa del Sig: Clari
a' due Voci

36.



Messa a 2 voci del Sig.^{Co} N. Clari ©

Spartito



Largo

Handwritten musical score for the first system, featuring three staves. The top staff is in treble clef with a key signature of one flat (B-flat) and a time signature of 6/8. The middle and bottom staves are in bass clef with a key signature of one flat (B-flat) and a time signature of 6/8. The lyrics are: Kirie eleison Kirie eleison Kirie eleison Kirie eleison. The word 'eleison' is written as 'e = lei' in the first two staves and 'e = lei' in the third. There are some handwritten annotations like '7 6' and '5 4' below the notes.

Handwritten musical score for the second system, featuring three staves. The top staff is in treble clef with a key signature of one flat (B-flat) and a time signature of 6/8. The middle and bottom staves are in bass clef with a key signature of one flat (B-flat) and a time signature of 6/8. The lyrics are: Kirie eleison eleison eleison. The word 'eleison' is written as 'ele = = i son.' in the first two staves and 'ele = = i son.' in the third. There are some handwritten annotations like '5 4' and a sharp sign below the notes.

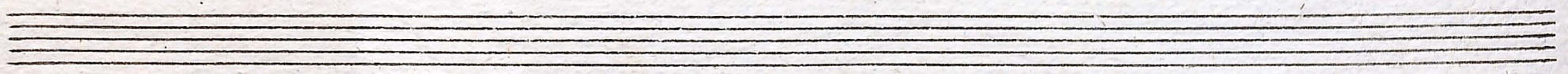
Allegro

Handwritten musical score for the third system, featuring three staves. The top staff is in treble clef with a key signature of one flat (B-flat) and a time signature of 6/8. The middle and bottom staves are in bass clef with a key signature of one flat (B-flat) and a time signature of 6/8. The lyrics are: Kirie eleison eleison eleison Kirie eleison eleison. The word 'eleison' is written as 'ele = = i son' in the first two staves and 'ele = = i son' in the third. There are some handwritten annotations like '7 #6 6' and '#4' below the notes.

son Kyrie elei son ele = ison Kyrie elei
 e eleison Kyrie eleison — Kyrie eleison eleison a le = ison

son eleison ele = ison eleison Kyrie elei = son Kyrie elei son ele ison
 son Kyrie = e eleison eleison Kyrie eleison Kyrie ele = ison

Kyrie eleison ele = ison eleison Kyrie eleison Kyrie eleison Kyrie =
 Kyrie eleison eleison Kyrie elei son Kyrie elei =



Handwritten musical score for the first system. It consists of three staves. The top staff is in G major (one sharp) and 6/8 time, with lyrics "e eleison e leison". The middle and bottom staves are in C major (no sharps or flats) and 6/8 time, with lyrics "son ele = = ison". The music is written in a cursive, handwritten style.

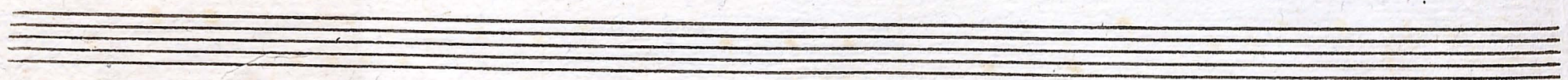
Handwritten musical score for the second system. It consists of three staves. The top staff is in G major (one sharp) and 3/4 time, with lyrics "Christo Christo elei son Christo Christo elei son Christo Christo". The middle and bottom staves are in C major (no sharps or flats) and 3/4 time, with lyrics "Christo Christo elei son Christo Christo elei son Christo". The music is written in a cursive, handwritten style.

Handwritten musical score for the third system. It consists of three staves. The top staff is in G major (one sharp) and 6/8 time, with lyrics "Christo Christo Christo Christo elei son = = ele = = i". The middle and bottom staves are in C major (no sharps or flats) and 6/8 time, with lyrics "Christo Christo Christo ele = ison = = ele i". The music is written in a cursive, handwritten style.

son Christo Christo elei son Christo Christo Christo Christo elei
 son Christo Christo elei son Christo Christo Christo Christo elei

son = elei son = elei son Christo Christo e = Lei =
 son = elei son = elei son Christo e = Lei

son Christo Christo elei son = = e lei = son Christo
 son Christo Christo elei son = = e lei son Christo



Christo elei son Christo Christo elei son = elei son = = elei
 Christo elei son Christo Christo elei son = = elei son = = elei

son Christo Christo e = le = ison = eleison eleison
 son Christo Christo e = le ison e = lei son

Segue il Gloria

Si replica il Lyrico dall'All.

Gloria Gloria in ex celsis in ex cel = sis Deo Gloria
 Gloria Gloria in ex celsis in ex cel sis Deo Gloria

8

Gloria in ex celsis in ex celsis De = o et in terra

Gloria in ex celsis in ex celsis De = o et in

7 4 6

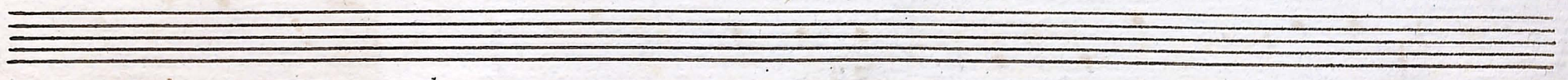
in terra pax et in terra in terra in terra pax pax ho-minibus

terra in terra pax pax in terra in terra pax pax hominibus

5

bono vo lunta = tis ^{soli} Gloria in ex celsis Deo Gloria in ex

bono vo lunta tis Gloria in ex celsis Deo



celsis Deo Gloria in excelsis Deo et in terra

Gloria in excelsis Deo Glo = = = ri a et in terra

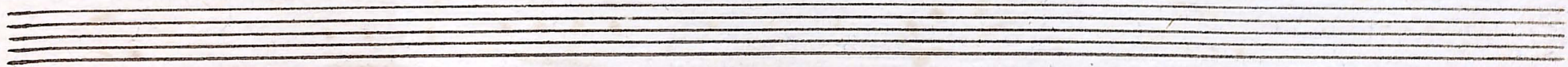
in terra pax pax hominibus benevolentis Gloria

in terra pax pax hominibus benevolentis Gloria

Gloria in excelsis Deo

Gloria in excelsis Deo Et in terra = Basso Solo

6 5 5 4 3#



Et in ter = = = = ra in terra pax in ter = =

= ra in terra pax ho mi = nibus bo ne vo lun ta =

= ra in terra pax ho mi = nibus bo ne vo lun ta =

= ra in terra pax ho mi = nibus bo ne vo lun ta =

= ra in terra pax ho mi = nibus bo ne vo lun ta =

= ra in terra pax ho mi = nibus bo ne vo lun ta =

Et in ter = = = =

Et in ter = = = =

11

ra in terra pax in terra pax pax ho-

3 5 6 5 4 6 3 6 6 3 5 3 3 3 4 4 6

minibus bone volun ta = = = = =

5 6 #6 4 8 7 6 4 3 6 5 4 6

= tis bone volunta = = = = = tis

5 3 4 6 4 4 3 4 4 3

bone volun ta = = = = = tis -

3 4 6 5 6 3 3 4 4 3 4

Mus

Segue = Laudamus = Tenore Solo

Mus

6

Laudamus te Laudamus benedicimus ado ramus glo-

rificamus te glorifi - camus te Lau damus te laudamus be ne-

dicimus ado ramus glo ri - ficamus te glo ri = = fi.

ca = = = = = mus glo rifi camus ado-

ramus glorifi camus te glorifi camus te

Handwritten musical notation for the first system. It features a vocal line and a piano accompaniment. The vocal line begins with the lyrics "tibi propter magna gloriam propter magna gloriam tu =". The piano accompaniment consists of two staves with various rhythmic patterns and accidentals.

Handwritten musical notation for the second system. It features a vocal line and a piano accompaniment. The vocal line begins with the lyrics "propter magna glo = = rias tu am propter magna gloriam tu =". The piano accompaniment consists of two staves with various rhythmic patterns and accidentals.

Handwritten musical notation for the third system. It features a vocal line and a piano accompaniment. The vocal line begins with the lyrics "am propter magna glo = = rias tu am propter magna gloriam tu =". The piano accompaniment consists of two staves with various rhythmic patterns and accidentals.

Segue = Domine = a 12 =

Handwritten musical score for the first system. It consists of three staves. The top staff is in treble clef with a key signature of two flats (B-flat and E-flat) and a 3/4 time signature. The middle and bottom staves are in bass clef with the same key signature and time signature. The lyrics are written in cursive below the staves.

Domine Deus Deus Rex celestis

Domino Deus Deus Rex celestis Deus

Handwritten musical score for the second system. It consists of three staves. The top staff is in treble clef with a key signature of two flats and a 3/4 time signature. The middle and bottom staves are in bass clef with the same key signature and time signature. The lyrics are written in cursive below the staves.

Deus Pa = = = = = ter omni potens

Pa = = = = = ter omni potens

Handwritten musical score for the third system. It consists of three staves. The top staff is in treble clef with a key signature of two flats and a 3/4 time signature. The middle and bottom staves are in bass clef with the same key signature and time signature. The lyrics are written in cursive below the staves.

Domine filij filij uni: genito Je = = = = =

Domino filij filij uni: genito Je = = = = =

In Christo Domine Deus Deus agnus Dei

In Christo Domine Deus Deus agnus Dei

6 4 4 4 4

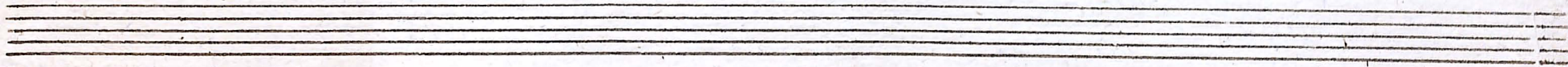
Filius Patris

Filius Patris

Filius Patris

Filius Patris

7 7 7 7



Filius Pa

Mun

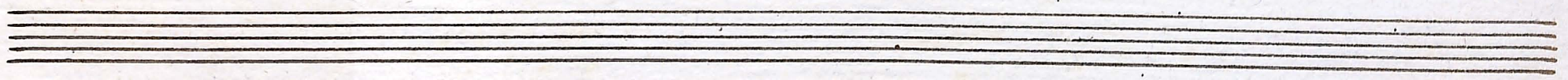
Largo Tutti

Qui tollis peccata mundi misere-re-re misere-re-re

Handwritten musical score for the first system. The vocal line (top staff) begins with the lyrics "vere no = = = bis" and includes a "Solo" marking. The piano accompaniment (middle and bottom staves) features a bass line with notes and rests, and a treble line with notes and rests. The key signature is three flats (B-flat, E-flat, A-flat) and the time signature is 6/8.

Handwritten musical score for the second system. The vocal line (top staff) continues with the lyrics "mise vere" followed by "bis Qui tollis pec cata pec = cata" and "mundi suscipe suscipe deprecati = onem deprecatio =". The piano accompaniment (middle and bottom staves) continues with notes and rests. The key signature and time signature remain the same.

Handwritten musical score for the third system. The vocal line (top staff) continues with the lyrics "nem no = = Stra' suscipe de = pre ca = ti = o = nem". The piano accompaniment (middle and bottom staves) continues with notes and rests. The key signature and time signature remain the same.



Handwritten musical score for the first system. It consists of three staves: a vocal line at the top, a piano accompaniment line in the middle, and a lower piano accompaniment line at the bottom. The key signature is one flat (F major) and the time signature is 3/4. The lyrics are: *no = stra deple = ca = ti o = = ne no =*

Handwritten musical score for the second system. It begins with the instruction *Tutti*. The lyrics are: *Qui se = des ad dexteram Patris Misere re*. The system contains three staves: a vocal line, a piano accompaniment line, and a lower piano accompaniment line.

Handwritten musical score for the third system. The lyrics are: *no = bis miserere no = = = = bis* and *nobis miserere no = = = = bis*. The system contains three staves: a vocal line, a piano accompaniment line, and a lower piano accompaniment line.

Segue Quoniam Tenore solo

Quonia tu solus tu so-lus sanctus tu

so-lus Dominus tu solus-al-tis-simus Jesu Chris-

tu Quonia tu solus tu solus solus sanctus tu solus solus

Dominus tu so-lus al-tis-simus Je = = = =

= = = = sa Chris-te Je = = = =

in Christo Jesu Christo

Tutti
Largo

Cum Sancto Spiritu Cum Sancto Spiritu in glo

all:°

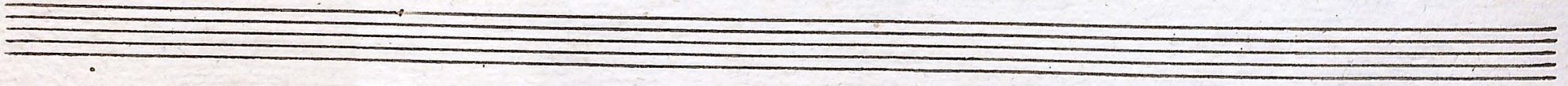
ria Dei Patris amen Dei Patris amen

Spiritu in glo = ria Dei Patris Amen Cum Sancto Spiri

Cum Sancto Spiritu in glo = ria Dei Patris a =
 tu in glo = = = = ri a Dei Patris Amen Dei Patris a

men Cum Sancto Spiritu in gloria Dei Pa tris a = men a = men
 men Cum Sancto Spiritu in gloria Dei Pa tris a = men a =

a = men a = men Dei Patris a men Cum Sancto Spiri
 men a = men Dei Patris Amen Cum Sancto Spiri



tu in gloria Dei Patris Amen Amen Dei Patris a =

tu in gloria Dei Patris Amen Amen Dei Patris a

men a men

men a men

men a men

Lauds Deo

et Deiparae