

*All. moderato.* *Dominus a*

*dextris* *Dominus a* *dextris a*

*dextris tu = is* *Con =*

*fregit confregit in die ire su = = e*

*reges* *Con = fregit in die*

*die ire sue reges in e su = =*

*= e re = = = = = ges.*

43. *Dominus a* *dextris*

*a* *dextris suis* *a = dextris*

*suis* *Domi = nus a* *dextris*



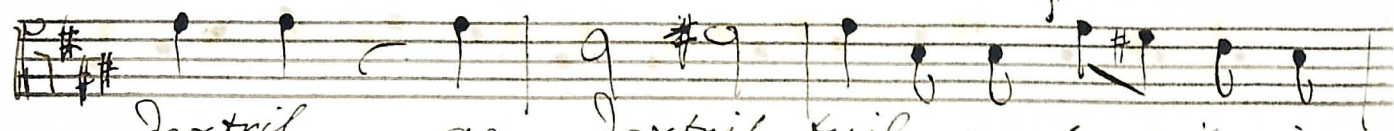
tu = = = if con = fre = git in



die ire tue ire tue



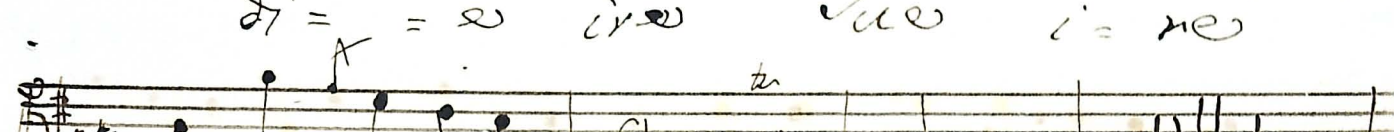
re = = gef. 3 Dominus a



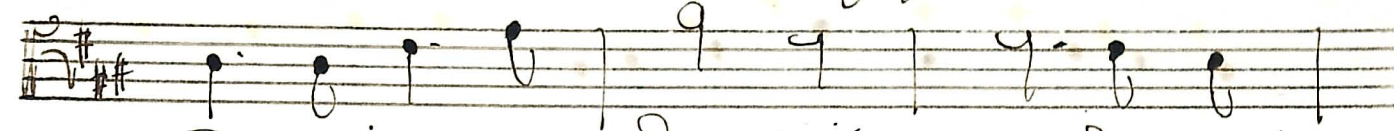
dextris a dextris tuis confregit in



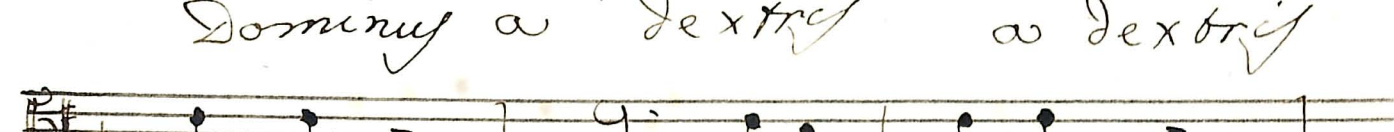
di = = e ire tue i = re



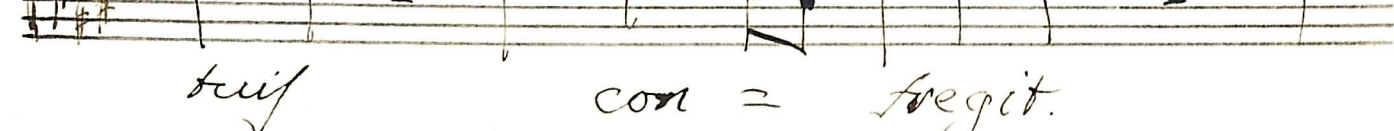
tu = = e re = = gef. 102.



Dominus a dextris a dextris



tuis con = fregit.



ire tue reges Dominus a



dextris a dextris tuis a

dextris tu = es i = re

vae i re vae re = ges Domi =

nus a dextris a dextris

tuis confre = = git in die i re

vae re = ges Dominus

a dextris tu is con = fregit in

die i re vae in die i re

vae i re vae re = =

= = = ges. 4 w 160. w