

31^a/1
2.

Neuf basses dances deux branles

vingt et cinq Dauennes avec quinze Gaillardes en musique a quatre parties le tout nouuellement imprime a Paris par Pierre Attaignat libraire demourat en la rue de la Harpe au bout de la rue des Mathurins pres leglise saint Cosme. 1530

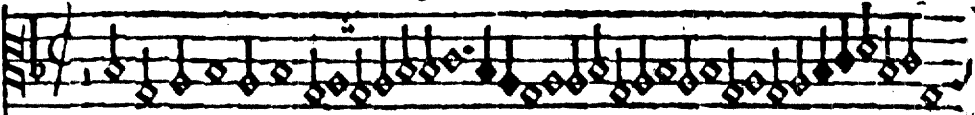
Le Roy a done priuilege de troyz ans aus Attaignat apres l'expressio de chacu liure ql'ipriera. Et deffet a to⁹ libraires / imprimers & aultres qlz nayet a imprimer & refaire lesd liures plez Attaignat imprimez ne aucune partie dicculx sur peine de confiscatiō & damēde arbitraire.

Tenor.

† xxxi


Tenor

1



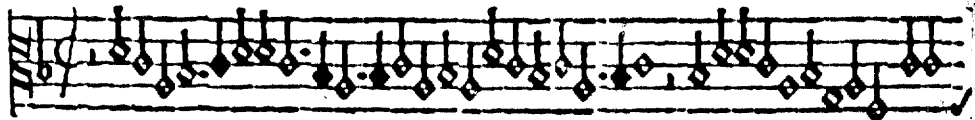
A single staff of music in G-clef with a treble clef. The key signature has one sharp (F#). The melody consists of a series of eighth and sixteenth notes, starting on G4 and ending on G5. The notes are: G4, A4, B4, C5, D5, E5, F#5, G5, F#5, E5, D5, C5, B4, A4, G4.

Basse dance



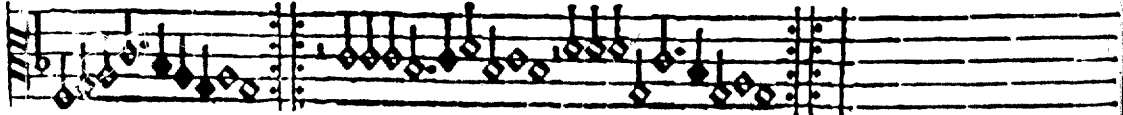
A double staff of music. The upper staff is in G-clef with a treble clef. The lower staff is in C-clef with a bass clef. The key signature has one sharp (F#). The melody consists of a series of eighth and sixteenth notes, starting on G3 and ending on G4. The notes are: G3, A3, B3, C4, D4, E4, F#4, G4, F#4, E4, D4, C4, B3, A3, G3.

2



A single staff of music in G-clef with a treble clef. The key signature has one sharp (F#). The melody consists of a series of eighth and sixteenth notes, starting on G4 and ending on G5. The notes are: G4, A4, B4, C5, D5, E5, F#5, G5, F#5, E5, D5, C5, B4, A4, G4.

Basse dance

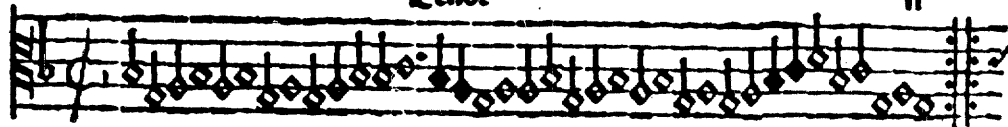


A double staff of music. The upper staff is in G-clef with a treble clef. The lower staff is in C-clef with a bass clef. The key signature has one sharp (F#). The melody consists of a series of eighth and sixteenth notes, starting on G3 and ending on G4. The notes are: G3, A3, B3, C4, D4, E4, F#4, G4, F#4, E4, D4, C4, B3, A3, G3.

Zeno

fi

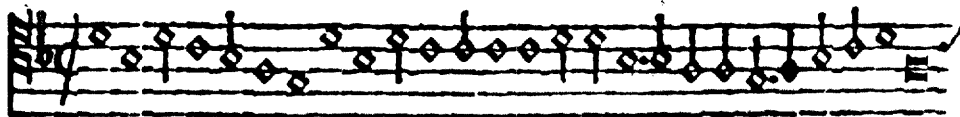
3



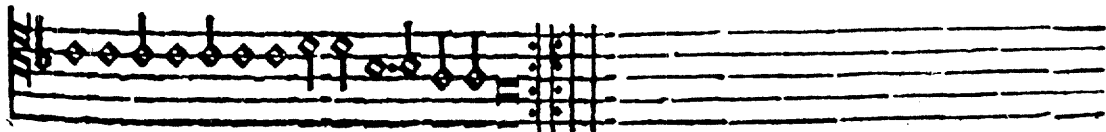
Basse dance



4



La gatta en italien Basse dance



5 **Renoc**

A single staff of music with a treble clef and a key signature of one flat. The melody consists of a series of eighth and sixteenth notes, some beamed together. The staff is filled with notes and rests, ending with a double bar line.

La scarpa my faict mal **Basse dance**

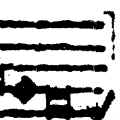
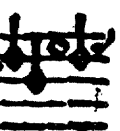
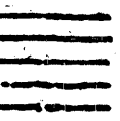
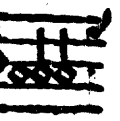
A single staff of music with a treble clef and a key signature of one flat. The melody is written in a simple, rhythmic style with eighth and sixteenth notes. The staff ends with a double bar line.

6

A single staff of music with a treble clef and a key signature of one flat. The melody features a mix of eighth and sixteenth notes, with some longer note values. The staff concludes with a double bar line.

La magdalena. **Basse dāce**

A single staff of music with a treble clef and a key signature of one flat. The melody is composed of eighth and sixteenth notes, with some rests. The staff ends with a double bar line.

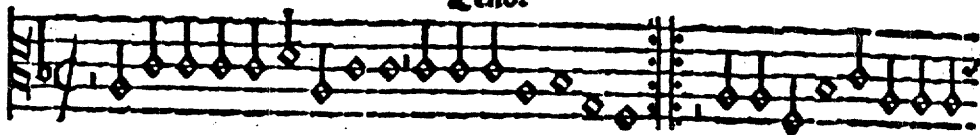


Tenor

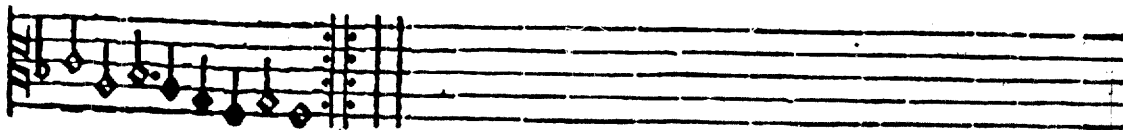
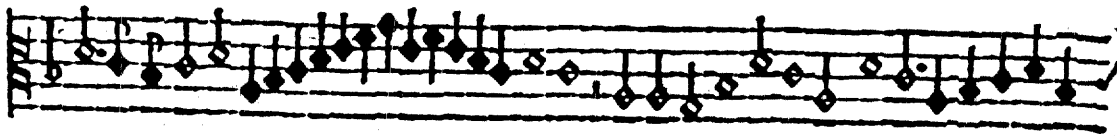
Courdon

Lenox

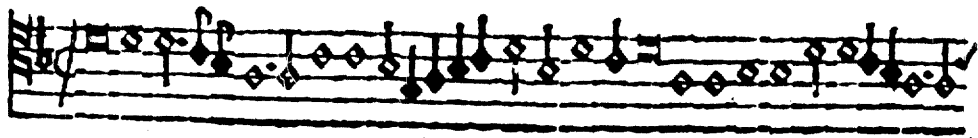
8



Baffe dance

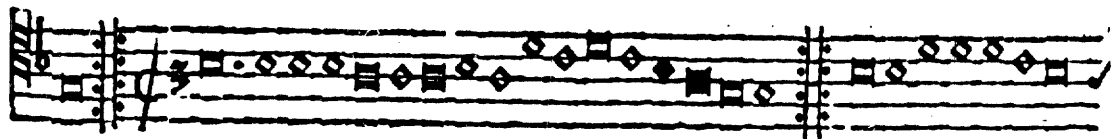


9



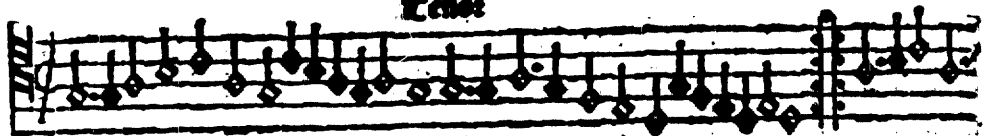
La brosse

IS affe dance

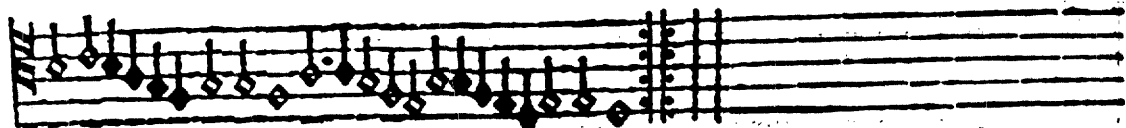


17.

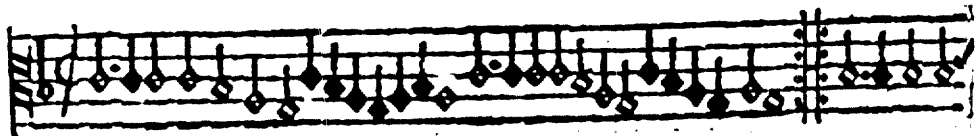
Renée



Branle



2



Branle



Tenos

1

A musical staff with two lines. The top line contains a sequence of notes with stems pointing downwards. The bottom line contains a sequence of notes with stems pointing upwards. The notes are connected by a continuous line, suggesting a melodic line. There are several bar lines throughout the staff.

baucme

A musical staff with two lines. The top line contains a sequence of notes with stems pointing downwards. The bottom line contains a sequence of notes with stems pointing upwards. The notes are connected by a continuous line, suggesting a melodic line. There are several bar lines throughout the staff.

2

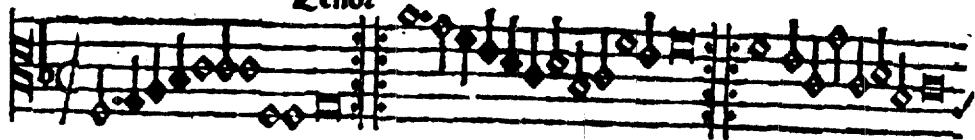
A musical staff with two lines. The top line contains a sequence of notes with stems pointing downwards. The bottom line contains a sequence of notes with stems pointing upwards. The notes are connected by a continuous line, suggesting a melodic line. There are several bar lines throughout the staff.

baucme

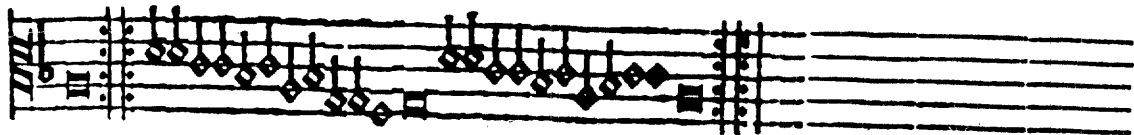
A musical staff with two lines. The top line contains a sequence of notes with stems pointing downwards. The bottom line contains a sequence of notes with stems pointing upwards. The notes are connected by a continuous line, suggesting a melodic line. There are several bar lines throughout the staff.

Зенос

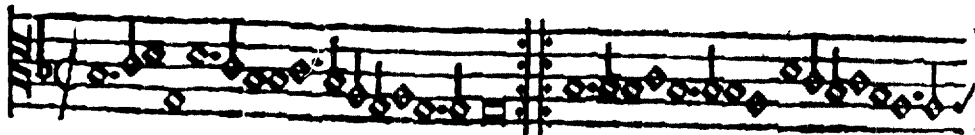
3



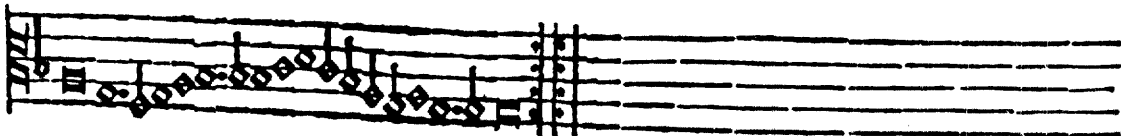
Васане



4



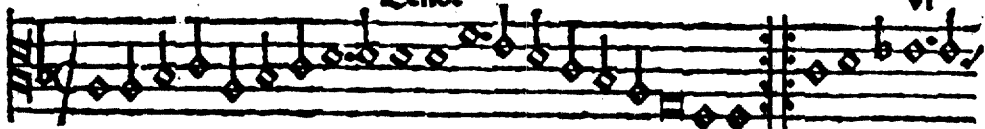
Васане



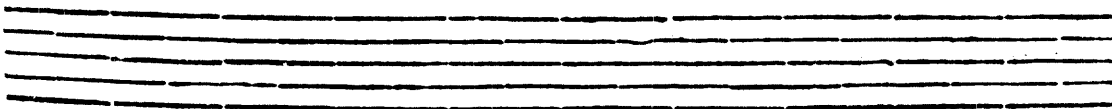
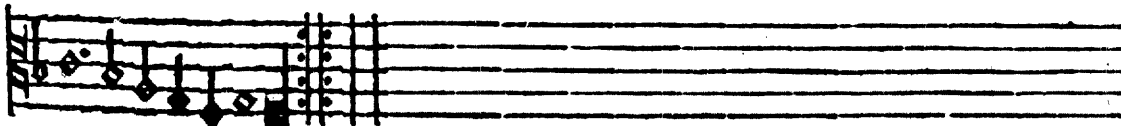
Zenos

vi

5

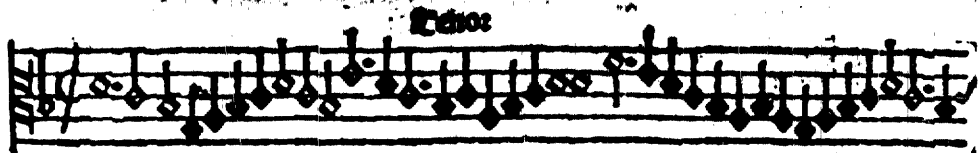


auane

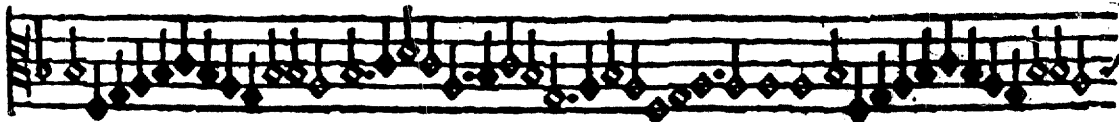
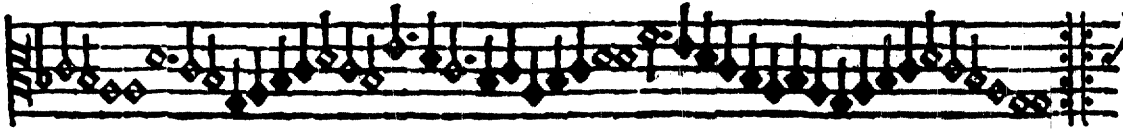


† 77 11

6



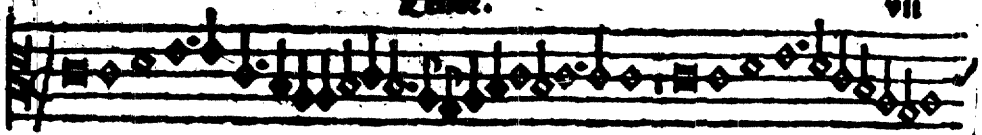
Paucme



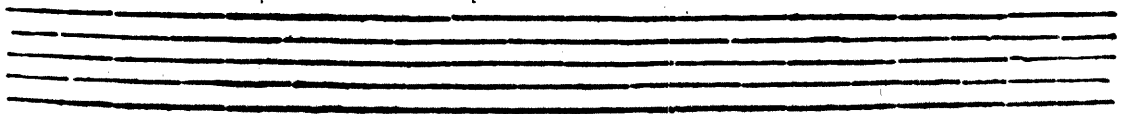
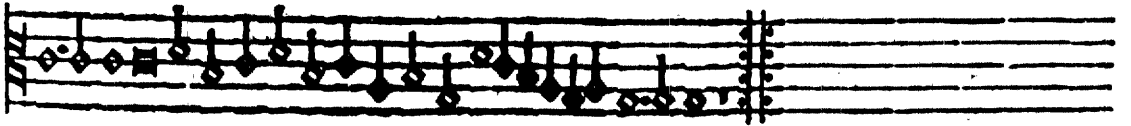
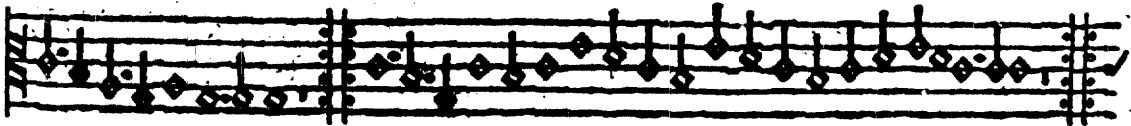
7

Zacc:

vii

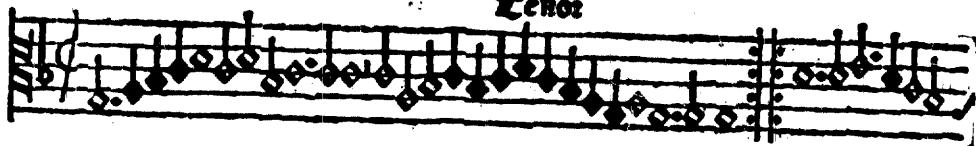


Paucne

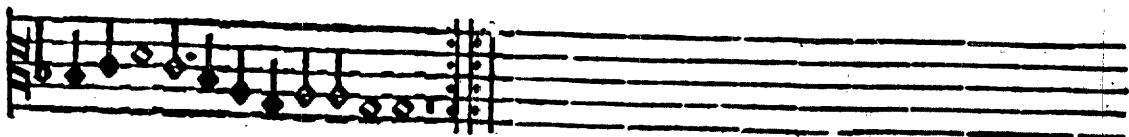


8

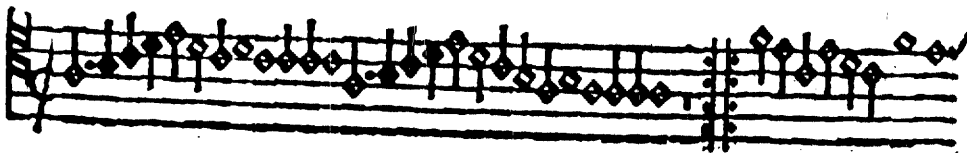
Tenor



Ba uenne



9



Ba uane

Tenot

viii

A musical staff with five lines. It contains a sequence of notes, some with stems pointing up and some with stems pointing down. A double bar line is present towards the right side of the staff.

10

A musical staff with five lines. It contains a sequence of notes, some with stems pointing up and some with stems pointing down. A double bar line is present towards the right side of the staff.

Sanone

A musical staff with five lines. It contains a sequence of notes, some with stems pointing up and some with stems pointing down. A double bar line is present towards the right side of the staff.

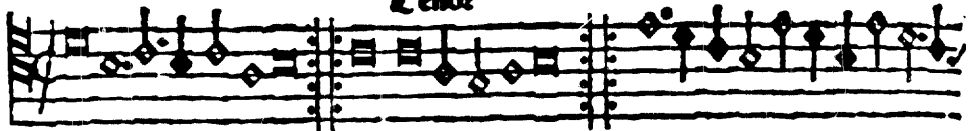
11

A musical staff with five lines. It contains a sequence of notes, some with stems pointing up and some with stems pointing down. A double bar line is present towards the right side of the staff.

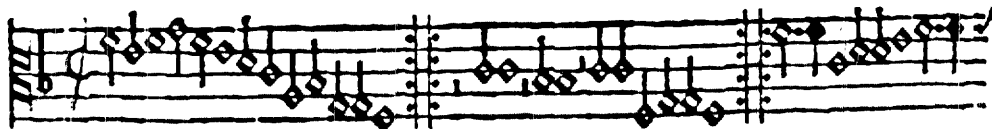
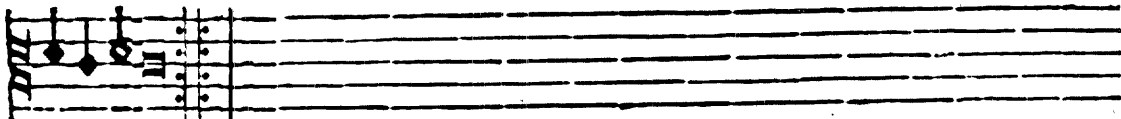
Sanone

12

Tenor



Batterie



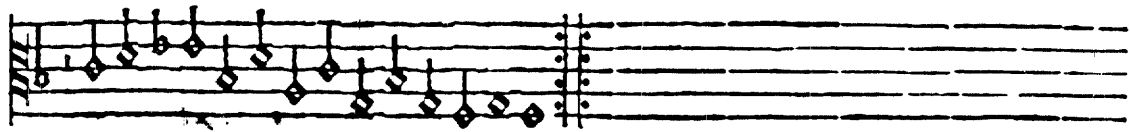
Tenor

it

14



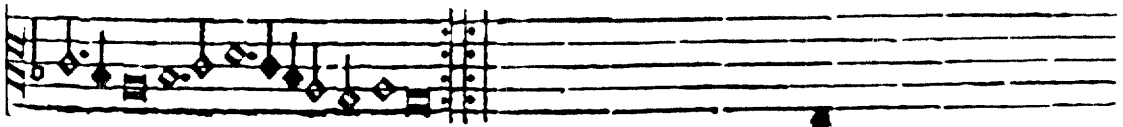
Gaienne



15



Gaienne



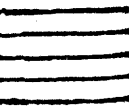
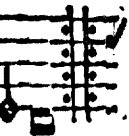
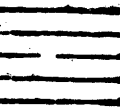
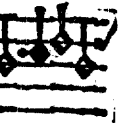
16

Tenor

Bauane

17

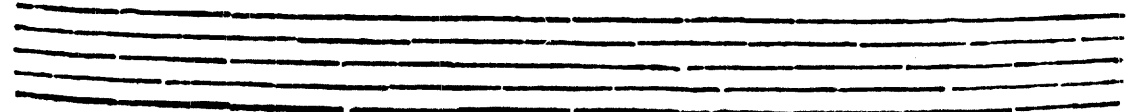
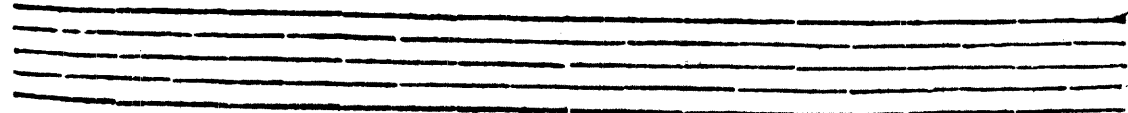
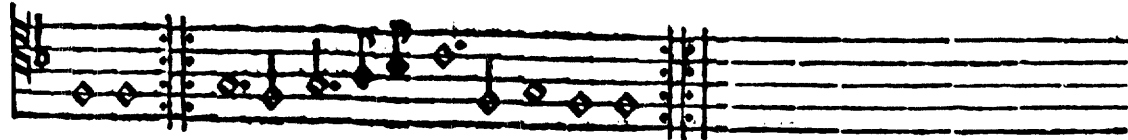
Bauenne



18

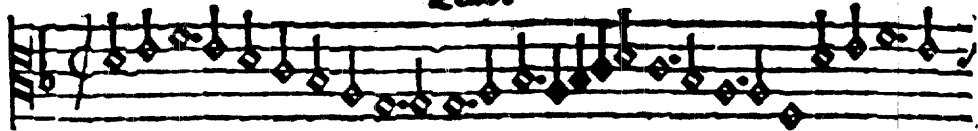


juane

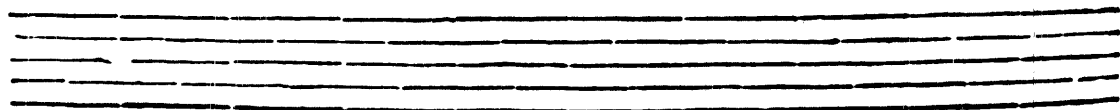
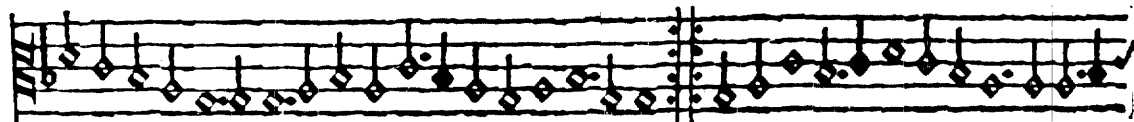


19

Tenore:



Organo



Tenor.

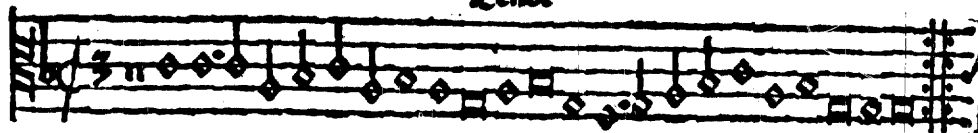
1

20.

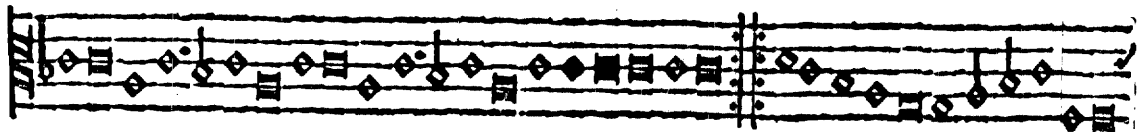
Saillarde

Renot

2

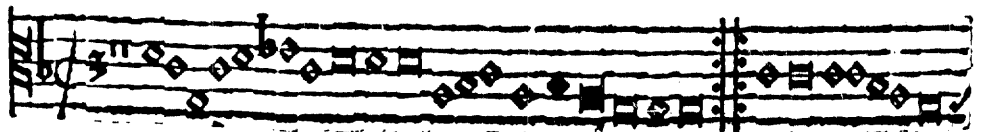


Saillarde



Saillarde

3



Tenor

rit

A musical staff with a treble clef and a key signature of one flat. The notation consists of a sequence of notes, many of which are decorated with diamond-shaped ornaments. A double bar line is present in the middle of the staff. The word "rit" is written at the end of the staff.

Gaillarde

4

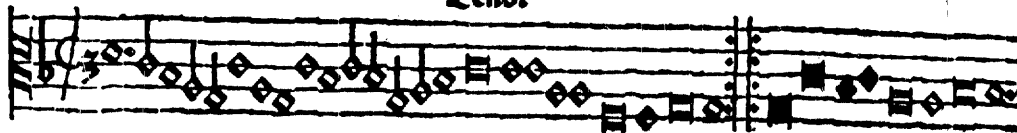
A musical staff with a treble clef and a key signature of one flat. The notation consists of a sequence of notes, many of which are decorated with diamond-shaped ornaments. A double bar line is present at the beginning of the staff.

A musical staff with a treble clef and a key signature of one flat. The notation consists of a sequence of notes, many of which are decorated with diamond-shaped ornaments. A double bar line is present at the end of the staff.

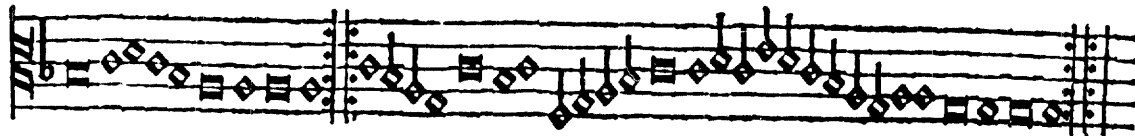
A musical staff with a treble clef and a key signature of one flat. The notation consists of a sequence of notes, many of which are decorated with diamond-shaped ornaments. A double bar line is present at the end of the staff.

Tenos

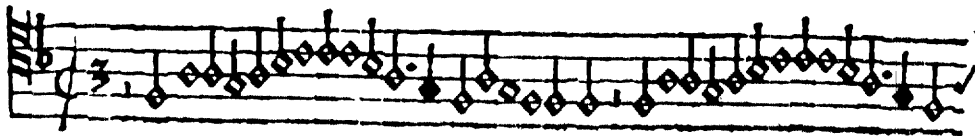
5



Baillarde



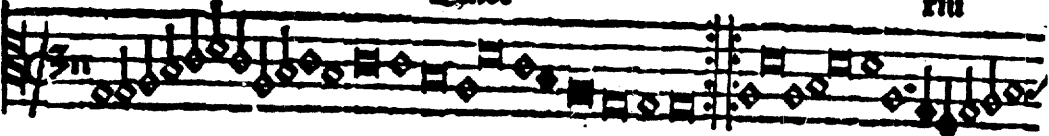
6



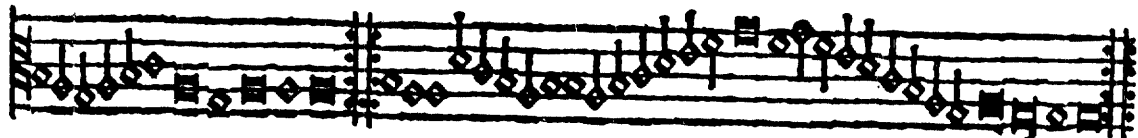
Baillarde



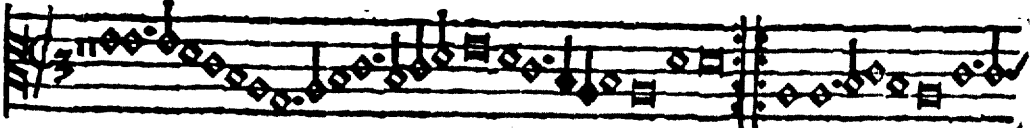
7 *Andoe* *rit*

A musical staff with a treble clef and a key signature of one sharp (F#). The staff contains a sequence of notes and rests, with a double bar line in the middle. The notes are mostly eighth and sixteenth notes, some with stems pointing up and some down. The word "Andoe" is written above the staff, and "rit" is written above the end of the staff.

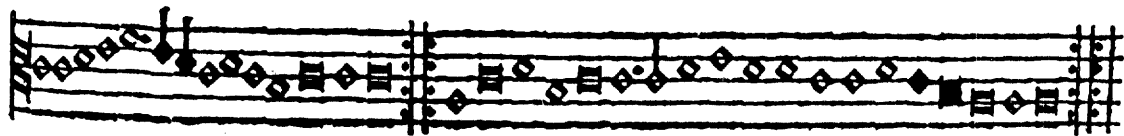
Saillarde

A musical staff with a treble clef and a key signature of one sharp (F#). The staff contains a sequence of notes and rests, with a double bar line in the middle. The notes are mostly eighth and sixteenth notes, some with stems pointing up and some down.

8

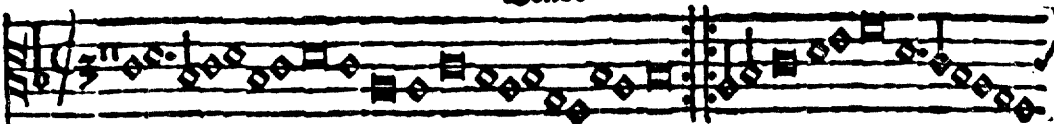
A musical staff with a treble clef and a key signature of one sharp (F#). The staff contains a sequence of notes and rests, with a double bar line in the middle. The notes are mostly eighth and sixteenth notes, some with stems pointing up and some down.

Saillarde

A musical staff with a treble clef and a key signature of one sharp (F#). The staff contains a sequence of notes and rests, with a double bar line in the middle. The notes are mostly eighth and sixteenth notes, some with stems pointing up and some down.

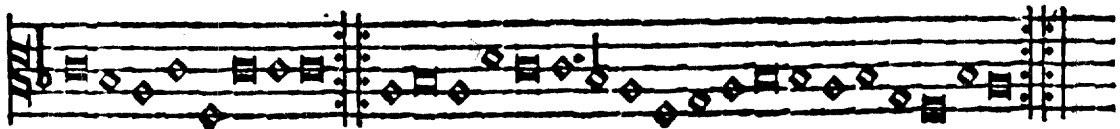
Tenor

9



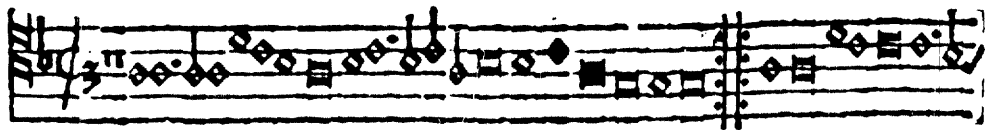
Musical notation for Tenor, measure 9. The staff is a five-line system with a treble clef and a 3/4 time signature. The music consists of a sequence of diamond-shaped notes, some with stems, and square-shaped notes. The notes are arranged in a descending sequence across the staff, with some notes beamed together. The measure ends with a double bar line.

Saillarde



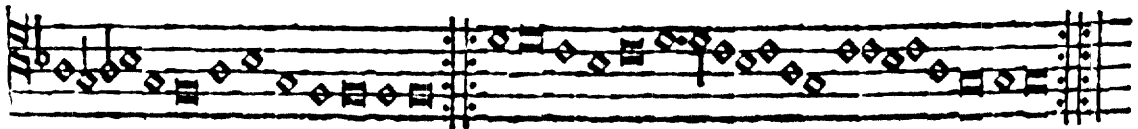
Musical notation for Saillarde. The staff is a five-line system with a treble clef and a 3/4 time signature. The music consists of a sequence of diamond-shaped notes, some with stems, and square-shaped notes. The notes are arranged in a descending sequence across the staff, with some notes beamed together. The measure ends with a double bar line.

10



Musical notation for Tenor, measure 10. The staff is a five-line system with a treble clef and a 3/4 time signature. The music consists of a sequence of diamond-shaped notes, some with stems, and square-shaped notes. The notes are arranged in a descending sequence across the staff, with some notes beamed together. The measure ends with a double bar line.

Saillarde

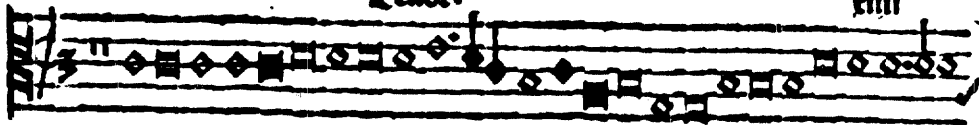


Musical notation for Saillarde. The staff is a five-line system with a treble clef and a 3/4 time signature. The music consists of a sequence of diamond-shaped notes, some with stems, and square-shaped notes. The notes are arranged in a descending sequence across the staff, with some notes beamed together. The measure ends with a double bar line.

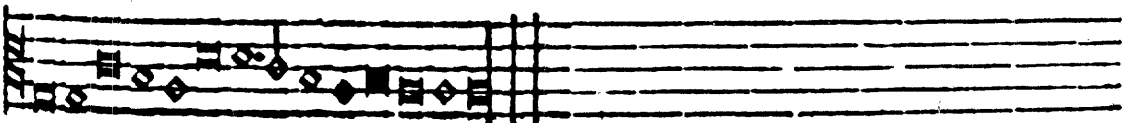
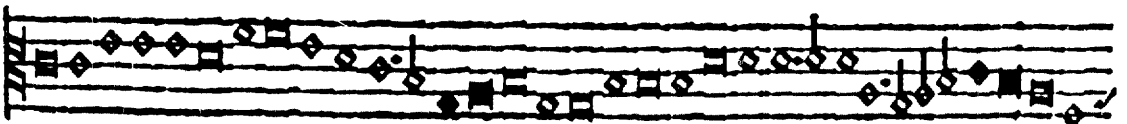
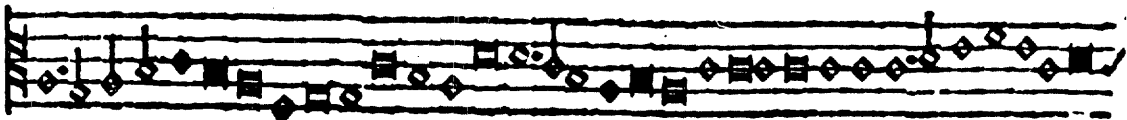
21

And.

rit.



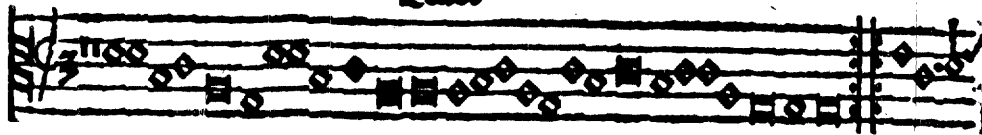
Gallerde



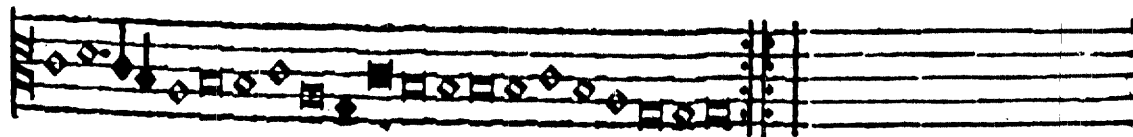
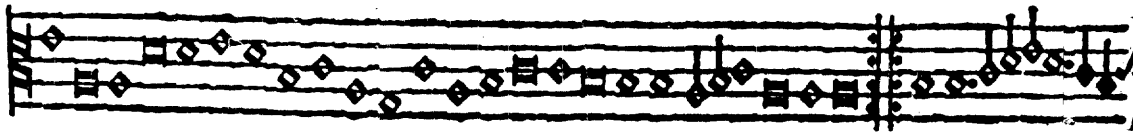
† 11 11

Tenor

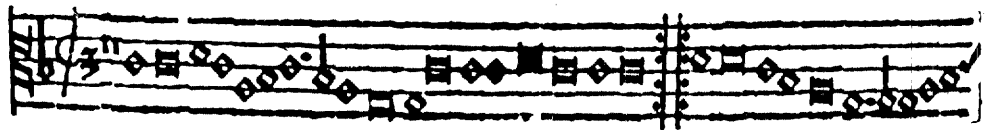
12



Ballarde



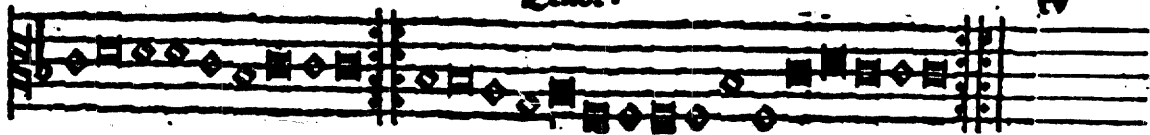
13



Ballarde

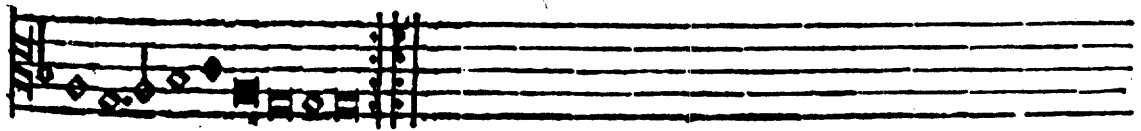
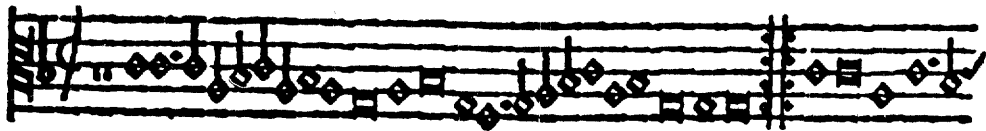
Chor.

79



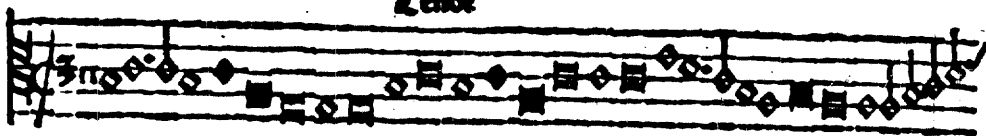
Sallarde

14

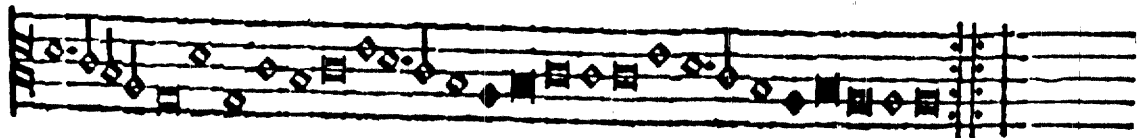
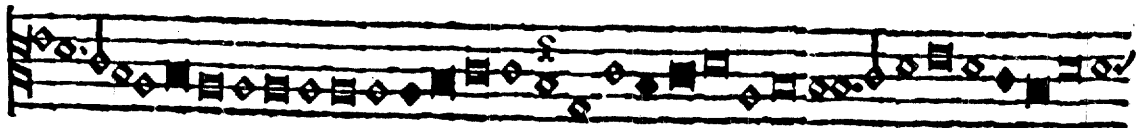


Renée

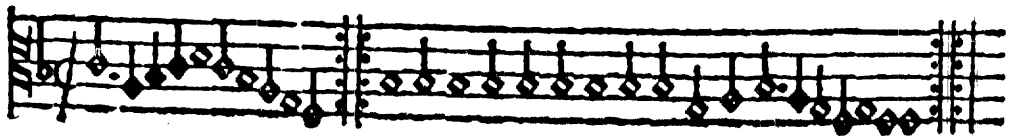
19



Gallarde

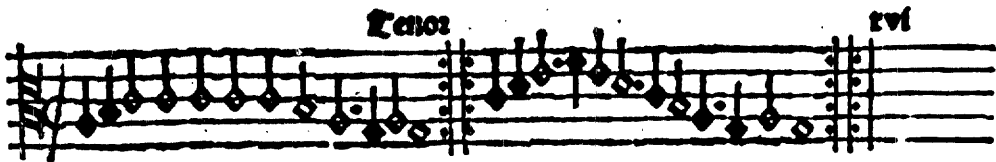


20



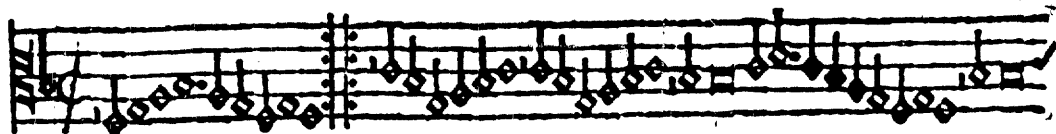
Gaufre

21

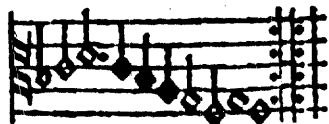


Глуше

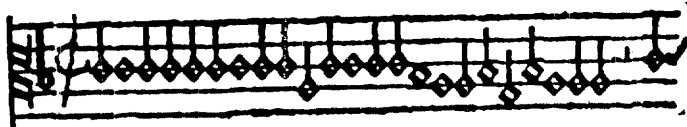
22



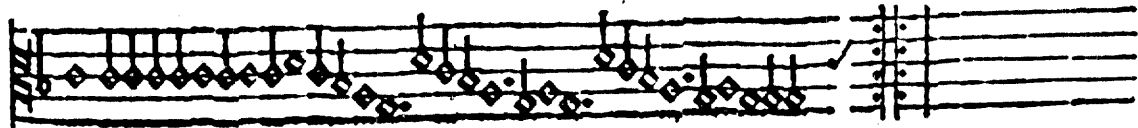
Глуше



23



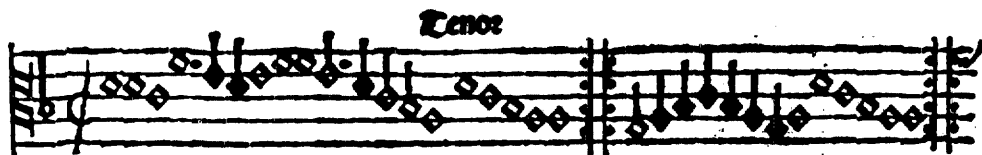
Глуше



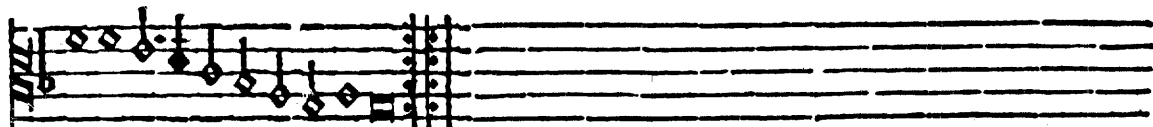
Mr

21

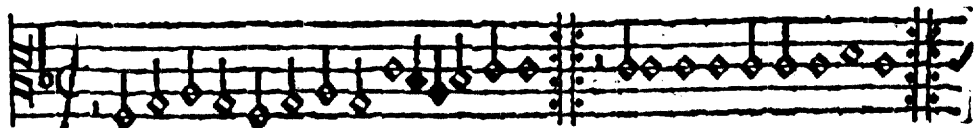
24



Daupenne



25



Daupéne La rote de rode



Finis.