

(N. 74)

Three

S O L O S

containing twelve easy

Movements

for the

GERMAN FLUTE or VIOLIN

and a Thorough Bass

expressly Composed for the Use of

YOUNG PERFORMERS

BY

Francesco Geminiiani

Price 2^s 6^d

L O N D O N

Printed and Sold by J. Bland at his Music Warehouse N^o 45 Holborn.

Where may be had by the same Author

Twelve Solos Op. 1 reduced from a

Guinea to ----- 12^s

Twelve Solos Op. 4 reduced from a

Guinea to ----- 12^s

and Six Solos Op. 5 ----- 10^s 6^d

mu 6207.3094

AH

SONATA I

Adagio

Allegro

The first system consists of two staves. The upper staff is in treble clef with a key signature of one flat (B-flat). The lower staff is in bass clef with a key signature of two flats (B-flat and E-flat). The music features a melodic line in the upper staff and a supporting bass line in the lower staff.

The second system continues the musical piece with two staves. The upper staff has a more active melodic line with many sixteenth notes. The lower staff provides a steady accompaniment.

The third system shows the continuation of the two-staff arrangement. The music concludes this section with a double bar line.

Largo

The fourth system is marked "Largo". It consists of two staves. The tempo is significantly slower than the previous sections. The melodic line in the upper staff is more spacious and expressive.

The fifth system continues the "Largo" section. It features a prominent melodic line in the upper staff and a bass line in the lower staff, ending with a double bar line.

Allegro

The sixth system is marked "Allegro". It consists of two staves. The tempo is faster than the "Largo" section. The time signature is 3/4. The music is more rhythmic and energetic.

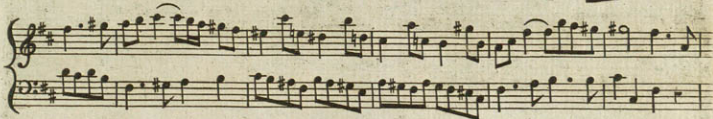
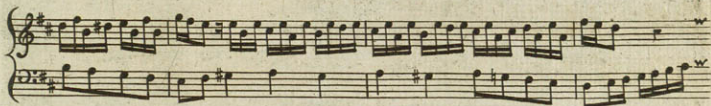
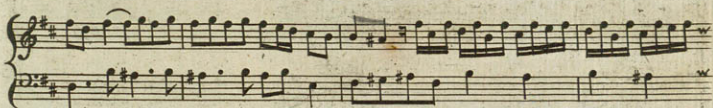
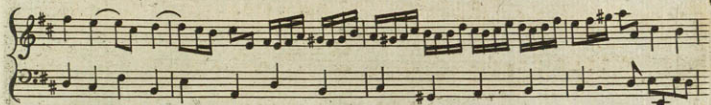
The seventh system continues the "Allegro" section. It features a melodic line in the upper staff with a fermata over a note, and a bass line in the lower staff.

The eighth system concludes the "Allegro" section. It features a melodic line in the upper staff and a bass line in the lower staff, ending with a double bar line.

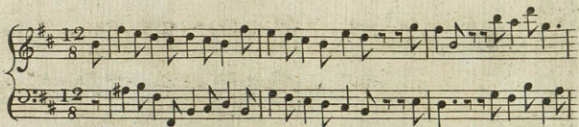
SONATA II

Affettuoso

Allegro



Affettuoso



Allegro



This page contains eight systems of handwritten musical notation, each consisting of a treble and a bass staff. The music is written in G major (one sharp) and 3/4 time. The notation includes various rhythmic values such as eighth and sixteenth notes, often beamed together, and rests. There are several instances of ornaments, particularly in the treble staff of the first system. The piece concludes with a double bar line and repeat signs at the end of the eighth system.

SONATA III

Musical score for Sonata III, page 8. The score is in G major and 3/4 time. It consists of six systems of two staves each. The first system includes a fermata over the first measure of the treble staff. The second system has a sharp sign above the first measure of the treble staff. The third system features several triplet markings (3) over the treble staff. The fourth system has a sharp sign above the first measure of the treble staff. The fifth system has triplet markings (3) over the first four measures of the treble staff. The sixth system is marked "Allegro" and features a fermata over the final measure of the treble staff.



Siciliano

The Siciliano section consists of two systems of music. Each system has a treble staff and a bass staff. The first system begins with a treble staff containing a series of eighth notes and a half note, followed by a bass staff with a similar rhythmic pattern. The second system continues the melody in the treble staff with more complex rhythmic figures, while the bass staff provides a steady accompaniment. The piece concludes with a double bar line and repeat signs in both staves.

Minuetto

The Minuetto section consists of two systems of music. Each system has a treble staff and a bass staff. The first system starts with a treble staff featuring a series of eighth notes and a half note, followed by a bass staff with a similar rhythmic pattern. The second system continues the melody in the treble staff with more complex rhythmic figures, while the bass staff provides a steady accompaniment. The piece concludes with a double bar line and repeat signs in both staves.

FINE



