

Sonata nona

Violino primo

A. Scarlatti (1660-1725)

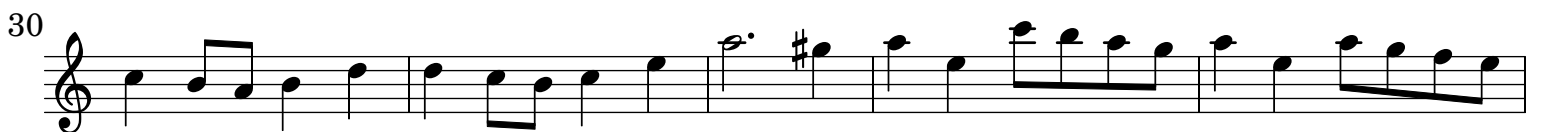
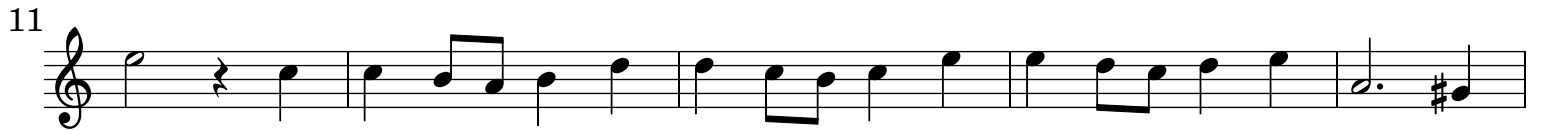
[1.] All[egr]o

Musical score for the first movement of Sonata IX by A. Scarlatti, Violino primo. The score is in treble clef, common time (C), and consists of six staves of music. The first staff begins with a treble clef and a common time signature. The second staff starts at measure 4. The third staff starts at measure 8. The fourth staff starts at measure 11 and includes a repeat sign at the beginning. The fifth staff starts at measure 15. The sixth staff starts at measure 18 and includes a piano (*p*) dynamic marking. The piece concludes with a double bar line and repeat dots.

[2.] Largo

Musical score for the second movement of Sonata IX by A. Scarlatti, Violino primo. The score is in treble clef, common time (C), and consists of three staves of music. The first staff begins with a treble clef and a common time signature. The second staff starts at measure 4. The third staff starts at measure 8. The piece concludes with a double bar line and repeat dots.

[3.] Fuga



62

67

71

76

81

87

93

99

105

110

116

122

p

Detailed description: This image shows a page of a musical score for the first violin part of a sonata. The score is written on a single staff in treble clef. It consists of 12 measures, numbered 62 through 122. The music is written in a key with one sharp (F#) and a 3/4 time signature. The notation includes various note values (quarter, eighth, sixteenth, and dotted notes), rests, and accidentals (sharps and flats). A dynamic marking of *p* (piano) is present at the end of the piece, specifically under the final measure (122).

[4.] Largo e piano

Musical score for Violino primo, section [4.] Largo e piano. The score consists of seven staves of music in 3/4 time, starting with a treble clef and a key signature of one sharp (F#). The music is characterized by a slow, steady eighth-note rhythm. The first staff begins with a treble clef and a 3/4 time signature. The subsequent staves are numbered 6, 12, 17, 22, 26, and 30. The piece concludes with a double bar line at the end of the seventh staff.

[5.] All[egr]o

Musical score for Violino primo, section [5.] All[egr]o. The score consists of six staves of music in 3/8 time, starting with a treble clef and a key signature of one sharp (F#). The music is characterized by a fast, rhythmic eighth-note pattern. The first staff begins with a treble clef and a 3/8 time signature. The subsequent staves are numbered 7, 13, 19, 25, and 32. The piece concludes with a double bar line at the end of the sixth staff.

Musical score for Violino primo, page 5, measures 38-127. The score is written in treble clef and includes various musical notations such as notes, rests, and accidentals. The key signature is one flat (B-flat). The score is divided into systems of five staves each, with measure numbers 38, 44, 50, 56, 63, 69, 75, 82, 89, 95, 102, 108, 114, 121, and 127 marked at the beginning of each system.