

Bass

Sonate für Violine, Violoncello und Basso continuo A-Dur

nach op.1 Nr.3

Gottfried Finger

Adagio



7



13



Allegro

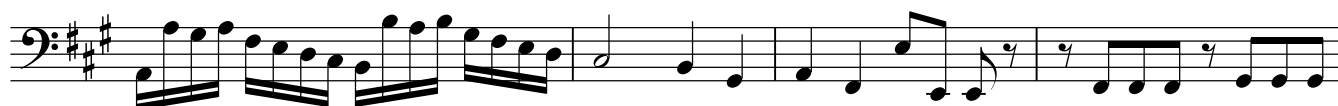
3



8



12



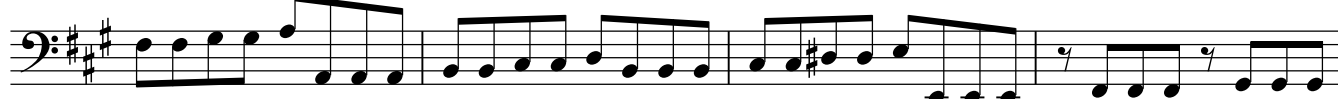
16



20



26



30



Adagio

Musical notation for the Adagio section, measures 1 through 10. The key signature is three sharps (F#, C#, G#) and the time signature is 4/4. The music features a series of eighth-note patterns with slurs and ties, starting with a half note on the first measure.

Allegro

Musical notation for the Allegro section, measures 11 through 43. The key signature remains three sharps and the time signature changes to 6/4. The music consists of a steady eighth-note pattern with frequent rests, marked with a *p* (piano) dynamic at measure 20.

Adagio

Musical notation for the Adagio section, measure 44. The key signature is three sharps and the time signature is common time (C). The music features a simple eighth-note pattern.