

**Christoph
Graupner**

Bass-Arien

mit

obligatem Fagott

Violoncello

52

59

65

71

78

85

91

98

103

108

da capo

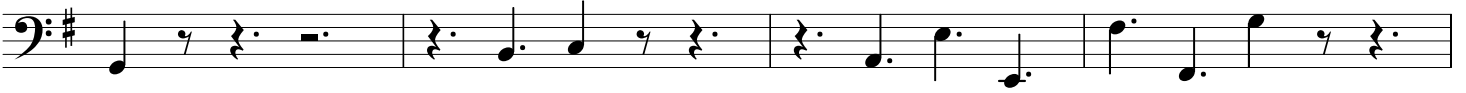
Aria 2



29



33



37



41



45



49



da capo

Choral



Fahre auf in die Höhe

1146/46

Dictum



5



9



12



15



18



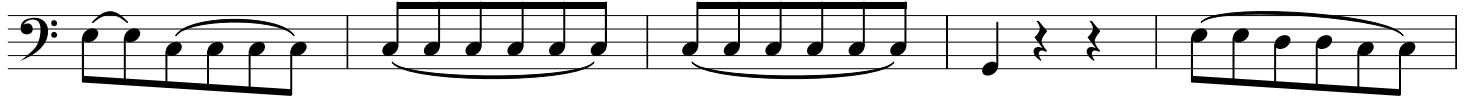
Arie



6



11



16



21



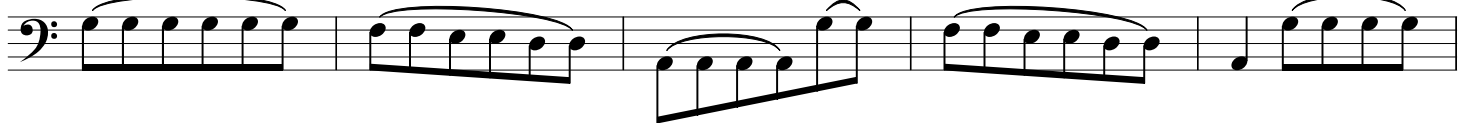
26



31



36



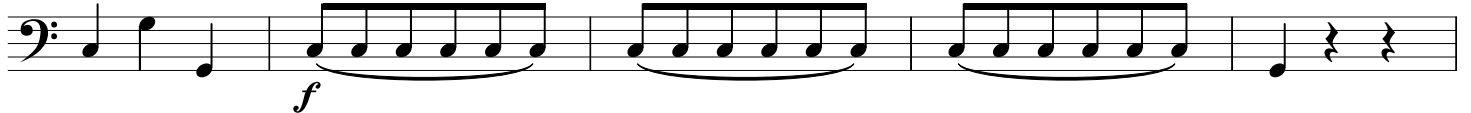
41



46



51



56

60

65

70

75

80

85

Detailed description: This section contains eight staves of musical notation in bass clef. Measures 56-59 show a continuous eighth-note pattern. Measure 60 has a half note followed by a quarter rest. Measure 61 has a quarter note followed by a quarter rest. Measure 62 has a quarter note followed by a quarter rest. Measure 63 has a quarter note followed by a quarter rest. Measure 64 has a quarter note followed by a quarter rest. Measure 65 has a quarter note followed by a quarter rest. Measure 66 has a quarter note followed by a quarter rest. Measure 67 has a quarter note followed by a quarter rest. Measure 68 has a quarter note followed by a quarter rest. Measure 69 has a quarter note followed by a quarter rest. Measure 70 has a quarter note followed by a quarter rest. Measure 71 has a quarter note followed by a quarter rest. Measure 72 has a quarter note followed by a quarter rest. Measure 73 has a quarter note followed by a quarter rest. Measure 74 has a quarter note followed by a quarter rest. Measure 75 has a quarter note followed by a quarter rest. Measure 76 has a quarter note followed by a quarter rest. Measure 77 has a quarter note followed by a quarter rest. Measure 78 has a quarter note followed by a quarter rest. Measure 79 has a quarter note followed by a quarter rest. Measure 80 has a quarter note followed by a quarter rest. Measure 81 has a quarter note followed by a quarter rest. Measure 82 has a quarter note followed by a quarter rest. Measure 83 has a quarter note followed by a quarter rest. Measure 84 has a quarter note followed by a quarter rest. Measure 85 has a quarter note followed by a quarter rest.

Choral

da capo

Largo

5

9

13

17

20

Detailed description: This section contains six staves of musical notation in bass clef, marked 'Largo'. The key signature has one flat (B-flat) and the time signature is common time (C). Measure 5 has a quarter note followed by a quarter rest. Measure 6 has a quarter note followed by a quarter rest. Measure 7 has a quarter note followed by a quarter rest. Measure 8 has a quarter note followed by a quarter rest. Measure 9 has a quarter note followed by a quarter rest. Measure 10 has a quarter note followed by a quarter rest. Measure 11 has a quarter note followed by a quarter rest. Measure 12 has a quarter note followed by a quarter rest. Measure 13 has a quarter note followed by a quarter rest. Measure 14 has a quarter note followed by a quarter rest. Measure 15 has a quarter note followed by a quarter rest. Measure 16 has a quarter note followed by a quarter rest. Measure 17 has a quarter note followed by a quarter rest. Measure 18 has a quarter note followed by a quarter rest. Measure 19 has a quarter note followed by a quarter rest. Measure 20 has a quarter note followed by a quarter rest.

Auf Zion!

GWV 1101/53

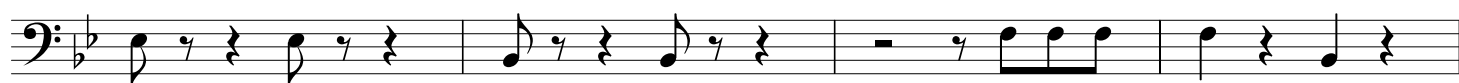
Aria



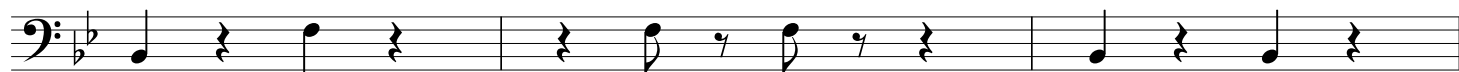
5



9



13



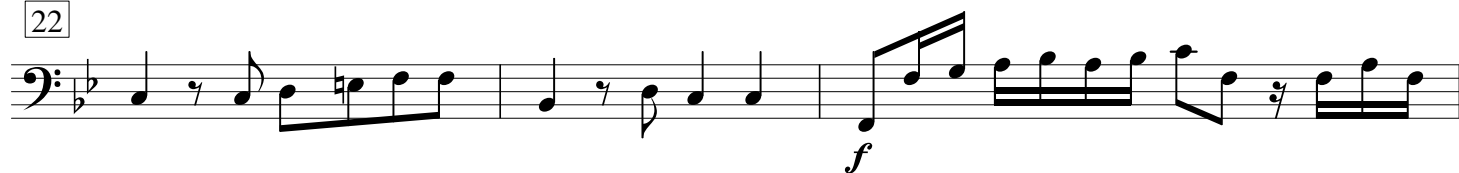
16



19



22



25



28



31



34

37

41

45

49

52

55

58

61

65

da capo