

8  
LY 56

Croque Fer



Timbales  
Grosse Caïsse, Trianglo  
et Grelot.

GRAND THEATRE DE GENEVE  
en dépôt auprès de la  
BIBLIOTHÈQUE MUSICALE  
DE LA VILLE DE GENEVE  
16, rue Général-Dufour CH-1204 Genève

A 56

# Overture

Sol. M.

*and<sup>te</sup> maestoso* 3/6 *f*

12

*all<sup>o</sup>* 3/4 *Grosse C.*  
*Sans Cymb.* *pp*

2

2

1

*f* *pp* *cres* *dim*

24 *vivo* 16 *timballes* *f*

*p* *f*

Handwritten musical notation for the first six staves. The notation includes various rhythmic values such as eighth and sixteenth notes, rests, and dynamic markings like *pp*. The staves are connected by slanted lines, indicating a continuous melodic or harmonic line.

Grosse Caisse

Handwritten musical notation for the seventh staff, which includes a drum part labeled "Grosse Caisse". The notation shows rhythmic patterns with vertical stems and flags, typical of a drum score. A tempo marking of 86 is visible at the end of the staff.

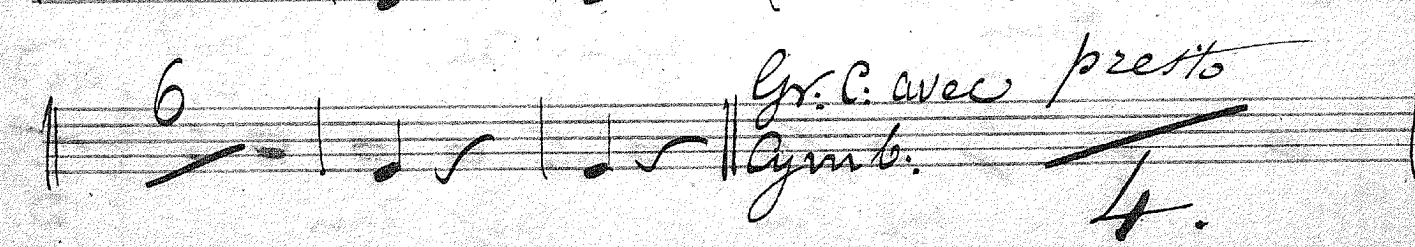
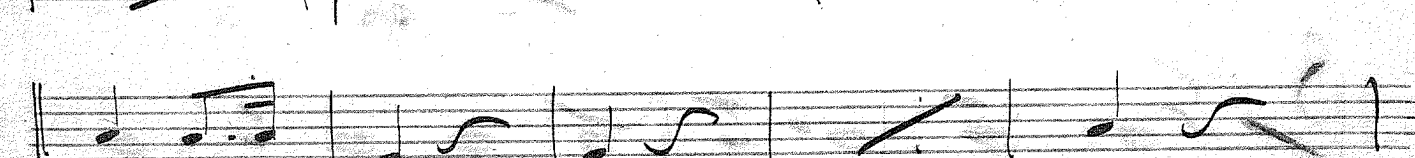
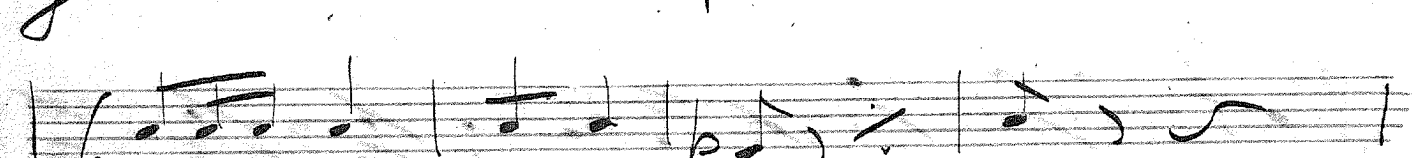
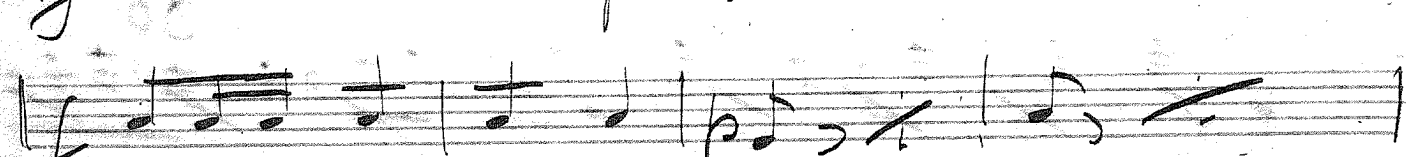
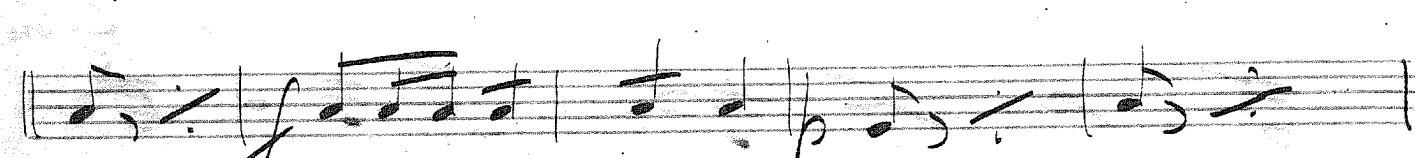
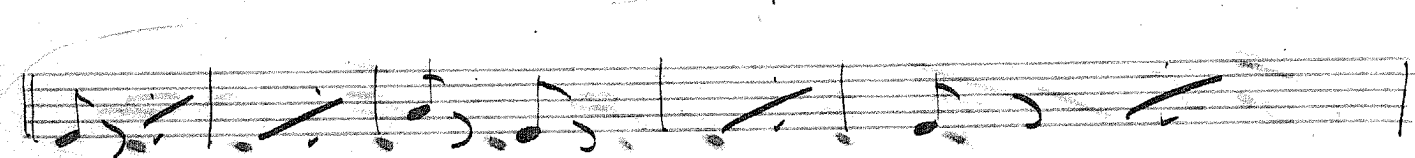
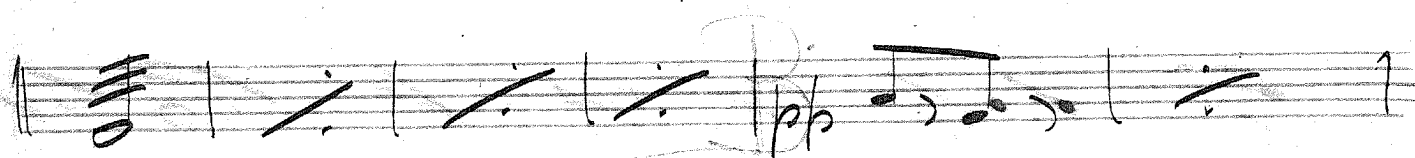
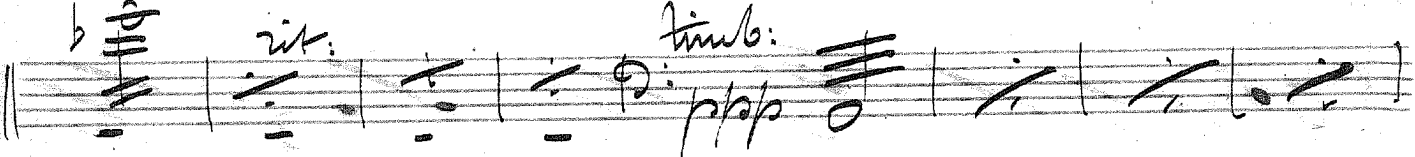
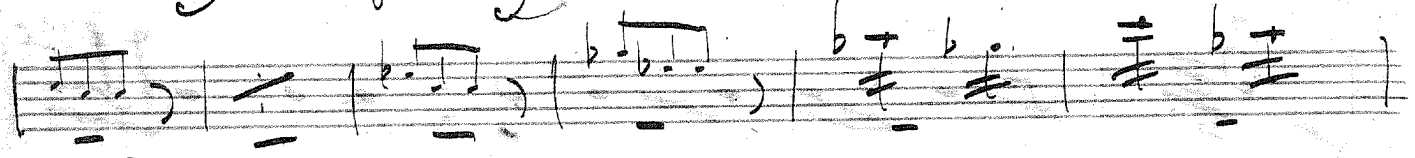
Handwritten musical notation for the eighth staff, featuring a melodic line with various notes and rests. The notation includes slanted lines and dynamic markings.

Gr. C.

Handwritten musical notation for the ninth staff, including a melodic line and a 6/8 time signature. The notation features a *pp* dynamic marking and a large number 6 above the staff.

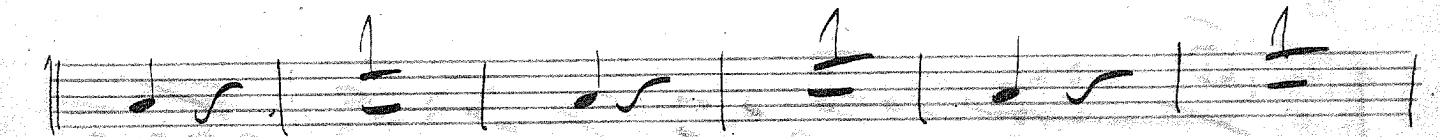
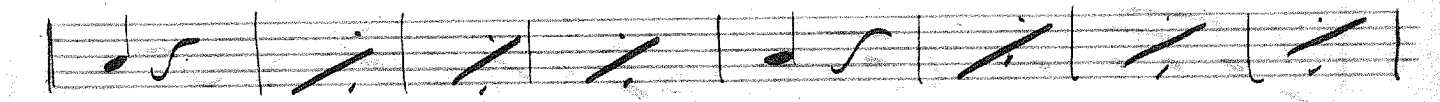
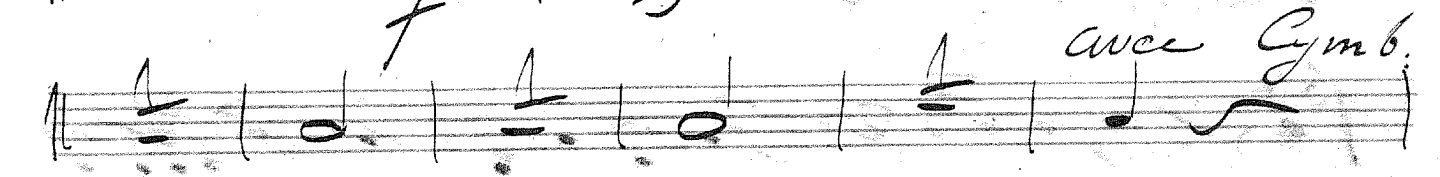
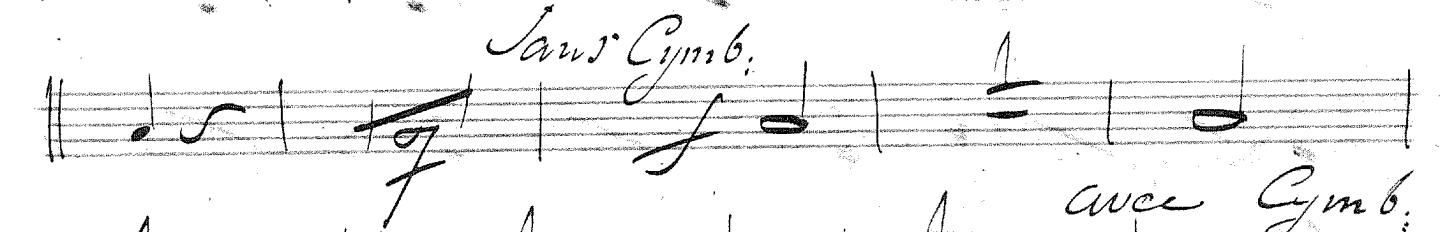
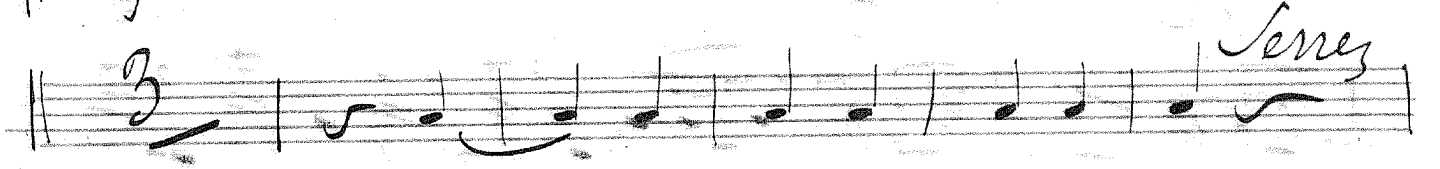
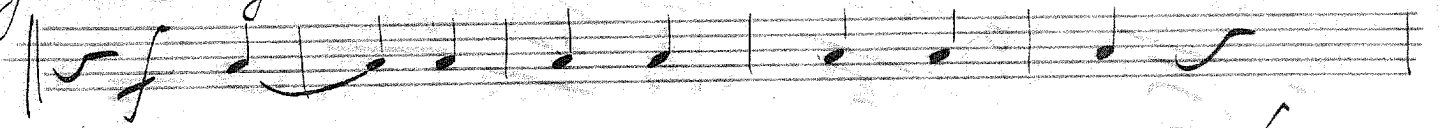
Handwritten musical notation for the tenth and eleventh staves, including lyrics and dynamic markings. The lyrics are "dim", "mf", "dim.", "mf", "dim.", "mf", "dim.", "mf", "dim.", "mf", "dim.". The notation includes a 6/8 time signature and a large number 6 above the staff. A large letter 'A' is written at the bottom right of the page.

*all<sup>o</sup>*  $\frac{12}{4}$   $\frac{5}{5}$  *and<sup>te</sup>*  $\frac{6}{8}$   $\frac{5}{2}$  *all<sup>o</sup>*  $\frac{12}{4}$  *Timbales* *viol.*





Gr. C. et Cymb.



pas deux comme ça

1. mod<sup>to</sup> Sol. Ré 9.6 8 f

18 viol

4 compl.

le voici attention

all<sup>o</sup> maest<sup>o</sup>

6is 11, Sol. 9.6 8 f 3

Longer Gaver

10, Sol 9.6 8 f 3

mais le voici

quater 11, Sol 9.6 8 f 1

je suis servie

Sol. Ré'

pour mon re. pos tu fais bien de ve - nir

il veut se bat - tre il veut se

V. S.

*all<sup>o</sup>*

triangle

*vivace*

7

drum-balles

*Elle que je retrouve*

*all<sup>o</sup> mod<sup>to</sup>* Sol, Ré 37 *and<sup>te</sup>* 34 36

*and<sup>te</sup>* 34 7

va - ven si je tai -



mais faudrait aimer ton père et je  
viens pour l'esco-fier - pour l'es-co-fier mal

25  
moins vite  
all<sup>o</sup> mod<sup>to</sup> 2/8 9 5 3/4 6  
and<sup>te</sup> 3/4 3 1 3/4 3 (long) 6  
6 2/3 all<sup>o</sup> 93

mais non et le cancan encoir moins.

100  
A. S. T.

*viola*

*enchainez*  
*avec les grelots*

*all.* *Grelots*

*Grasse Caisse avec Cymb.* *pp*

*grelots*

*c. et e.*

*8 ppp*

*ppp*

*Ordo:*

*25*

*Grelots*

*Gr. Cym.*

*33*

This is a handwritten musical score for percussion instruments. It consists of ten staves of music, arranged in five systems of two staves each. The notation includes various rhythmic patterns, rests, and dynamic markings such as *ppp* and *ppp*. There are also performance instructions like *c. et e.*, *Ordo:*, *Grelots*, and *Gr. Cym.*. The score is numbered with *8*, *25*, and *33* at different points. The handwriting is in black ink on aged paper.

Viol. *pp* *Gr. C: et C:* *Gr. C: et C:*

*f*

*f*



Buvez donc, buvez.

4 all: Grosse C: Sans Cymb.

Handwritten musical score for 'Buvez donc, buvez.' The score is written on ten staves. The first staff is a bass clef with a 2/4 time signature. The second staff is a treble clef with a 2/4 time signature. The third staff is a treble clef with a 3/4 time signature. The fourth staff is a treble clef with a 2/4 time signature. The fifth staff is a treble clef with a 2/4 time signature. The sixth staff is a treble clef with a 2/4 time signature. The seventh staff is a treble clef with a 2/4 time signature. The eighth staff is a treble clef with a 2/4 time signature. The ninth staff is a treble clef with a 2/4 time signature. The tenth staff is a treble clef with a 2/4 time signature. The score includes various musical notations such as notes, rests, and dynamic markings.

1 triangle

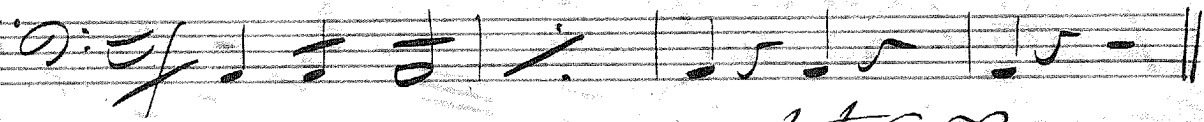
4  
Gr. C: Sans Cymb.

Handwritten musical score for 'Gr. C: Sans Cymb.' The score is written on two staves. The first staff is a treble clef with a 2/4 time signature. The second staff is a treble clef with a 2/4 time signature. The score includes various musical notations such as notes, rests, and dynamic markings.

ppw le 4 bis

plus de Solbert

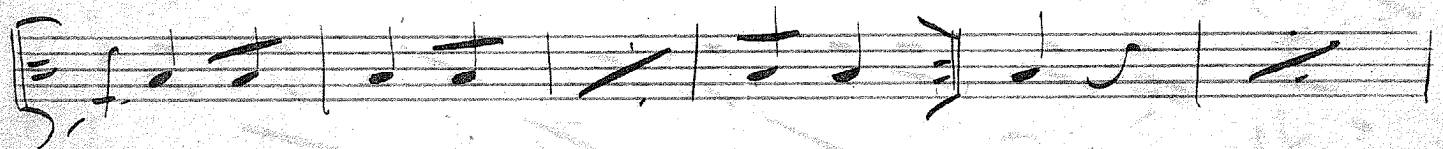
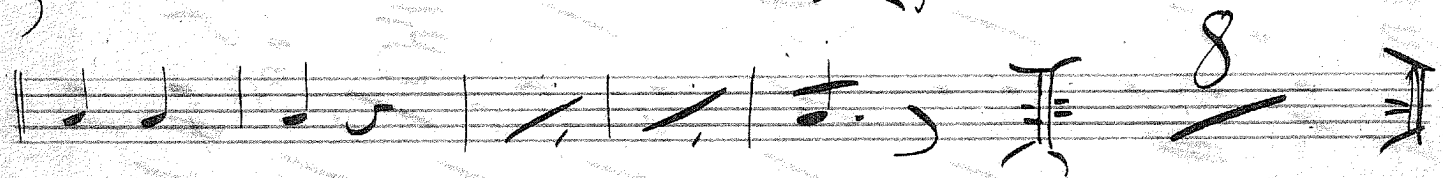
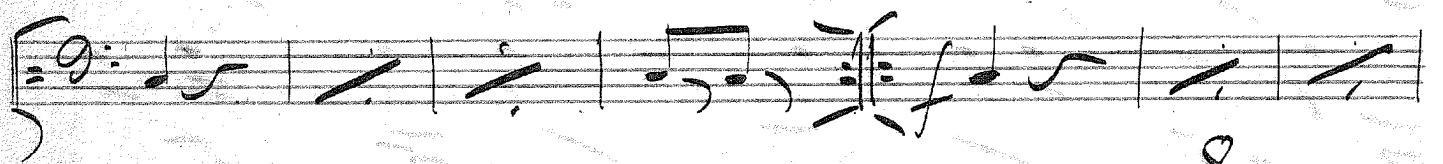
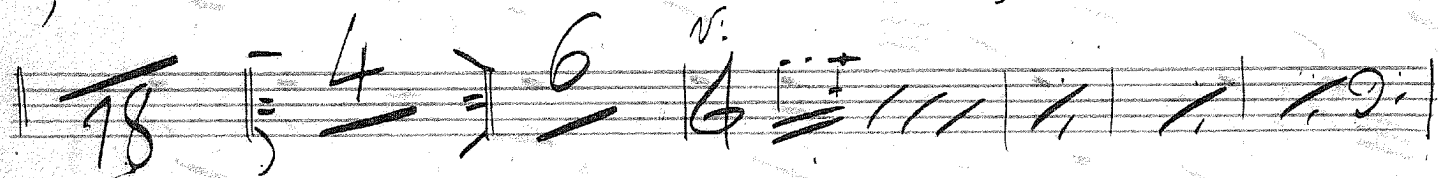
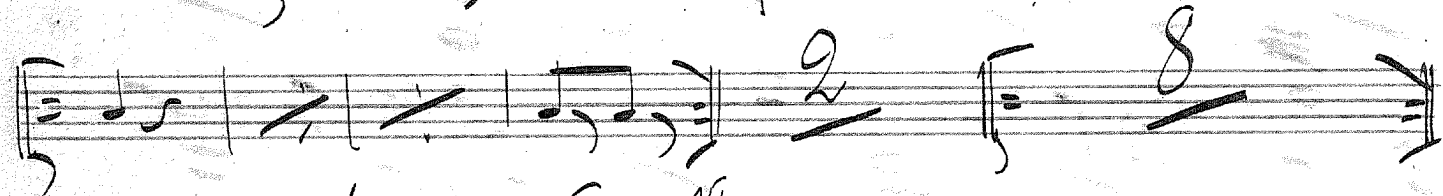
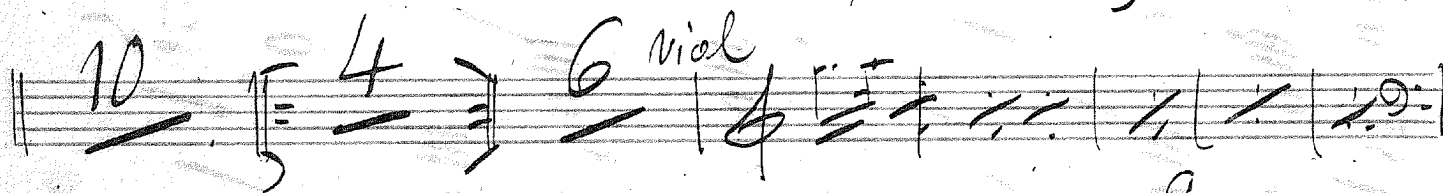
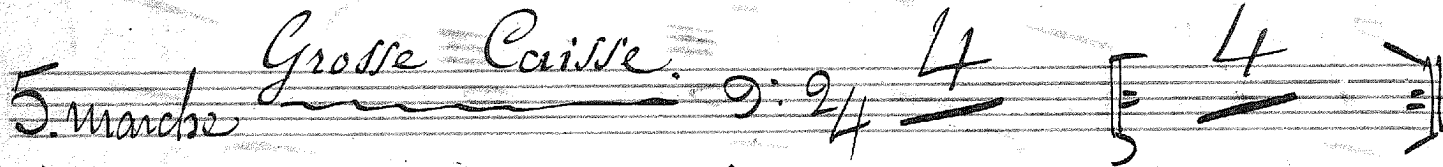
4 bis en la.



Dans le vide

4<sup>ter</sup> Tacet.

5. marche Grosse Caisse.



C'est ce que je voulais dire

trimb. Sa, mi. Solo.

Handwritten musical score on ten staves. The notation includes various rhythmic values, rests, and dynamic markings. The first staff begins with a treble clef and the tempo marking *mezzo solo*. The second staff features a 4/4 time signature and the tempo marking *all<sup>o</sup>*. The third staff has a 4/4 time signature and the dynamic marking *p*. The fourth staff starts with a 6/8 time signature. The fifth staff has a 2/4 time signature. The sixth staff has a 3/4 time signature. The seventh staff has a 4/4 time signature. The eighth staff has a 4/4 time signature and includes fingerings 1 through 7. The ninth staff has a 4/4 time signature. The tenth staff has a 2/4 time signature and includes the number 23. The score concludes with a double bar line and a signature.



1 2 3 4 5 6 7 8

A musical staff with notes and slurs, numbered 1 to 8.

A musical staff with notes and slurs.

qui jabotte en Ré.

A musical staff with notes and slurs, including the text "qui jabotte en Ré."

Messieurs Mesdames

en Sol. Ré

*f* *mod* 9:6 20 rit. *alleg* 24 triangle

A musical staff with tempo markings and time signatures: *f* *mod* 9:6 20 rit. *alleg* 24 triangle

9 10 11 12 13 14 15 16 17 18

A musical staff with notes and slurs, numbered 9 to 18.

9 10 11 12 13 14 15 16 17 18

A musical staff with notes and slurs, numbered 9 to 18.

timbales

A musical staff with notes and slurs, including the text "timbales".

A musical staff with notes and slurs.

A musical staff with notes and slurs.

A musical staff with notes and slurs.

A musical staff with notes and slurs, ending with "fin".



