

SONATE DA CHIESA

a Violino Solo e Violoncello o Basso Continuo

AMSTERDAM 1708

TOMASO ALBINONI

1671 – 1750

Published by Johan Tufvesson.

Non-commercial copying welcome

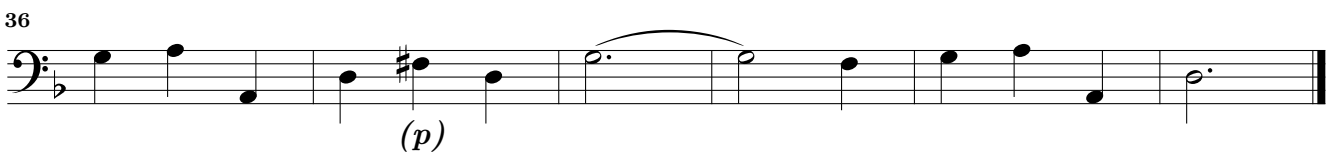
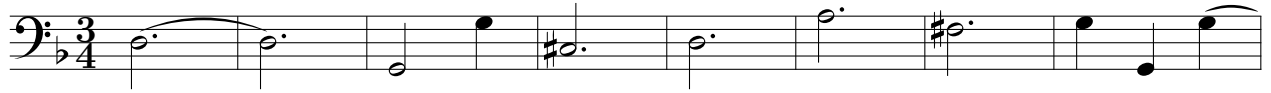
Revision : 1.1

Basso

Sonata I

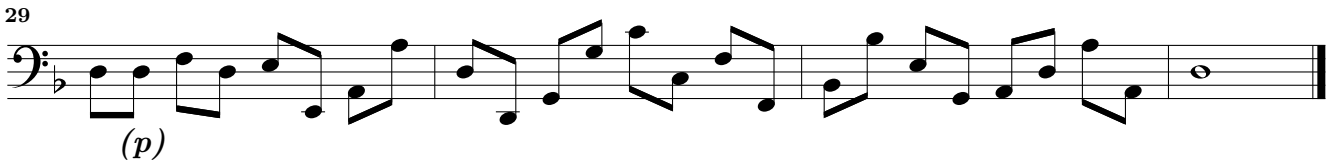
Tomaso Albinoni (1671–1750)

Adagio

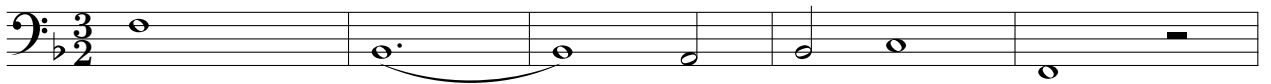


Allegro





Largo



4

7

10

13

17

20

23

26

29

31

(p)

(p)

This page intentionally left blank.

Basso

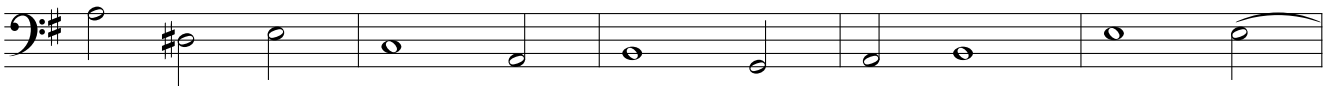
Sonata II

Tomaso Albinoni (1671-1750)

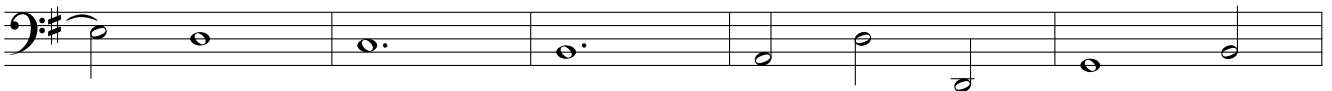
Adagio



6



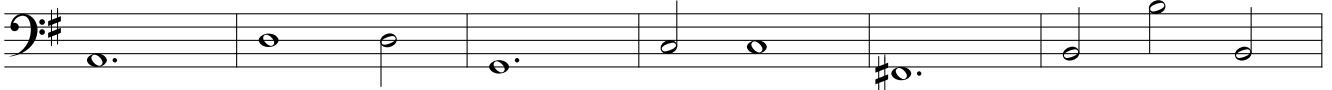
11



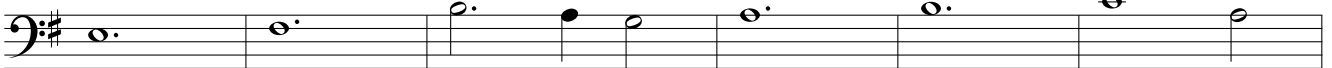
16



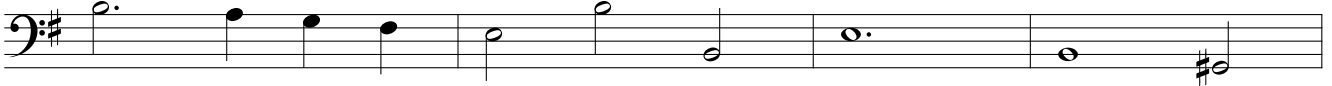
21



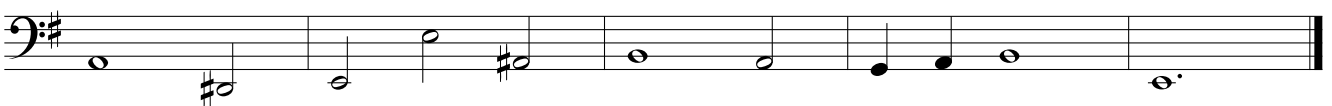
27



33

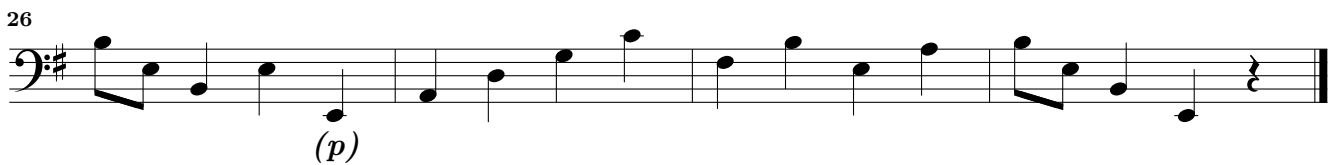
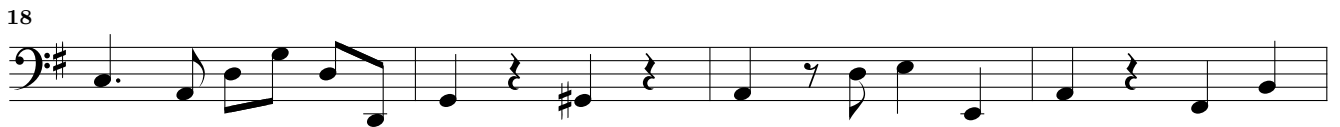


37



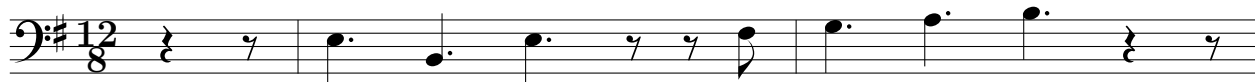
Allegro





Largo





3



6



9



12



15



17



21



25



29



32



36



This page intentionally left blank.

Basso

Sonata III

Tomaso Albinoni (1671-1750)

Largo

Musical score for the Largo section of Sonata III by Tomaso Albinoni, Bass part. The score is written in bass clef with a key signature of one flat (B-flat) and a common time signature (C). It consists of four staves of music. The first staff begins with a treble clef and a common time signature. The second staff is marked with a measure rest '4'. The third staff is marked with a measure rest '7'. The fourth staff is marked with a measure rest '10' and a dynamic marking '(p)' below the first measure. The piece concludes with a double bar line.

Allegro

Musical score for the Allegro section of Sonata III by Tomaso Albinoni, Bass part. The score is written in bass clef with a key signature of one flat (B-flat) and a common time signature (C). It consists of six staves of music. The first staff begins with a treble clef and a common time signature. The second staff is marked with a measure rest '5'. The third staff is marked with a measure rest '9'. The fourth staff is marked with a measure rest '13'. The fifth staff is marked with a measure rest '16'. The sixth staff is marked with a measure rest '19' and a dynamic marking '(p)' below the first measure. The piece concludes with a double bar line.

Adagio

Sonata III Basso



8



14



20



25



Giga



4



7



10



14



18



22



(p)

Basso

Sonata IV

Tomaso Albinoni (1671-1750)

Adagio

4

7

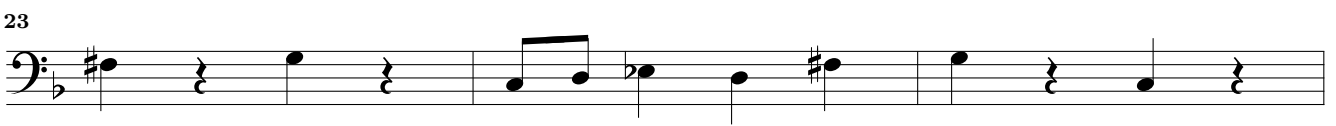
10

13

15

Allegro

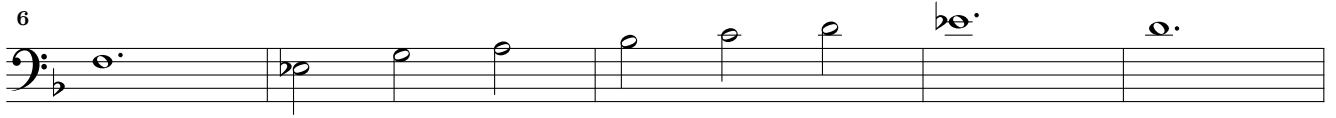
Sonata IV Basso



Adagio



6



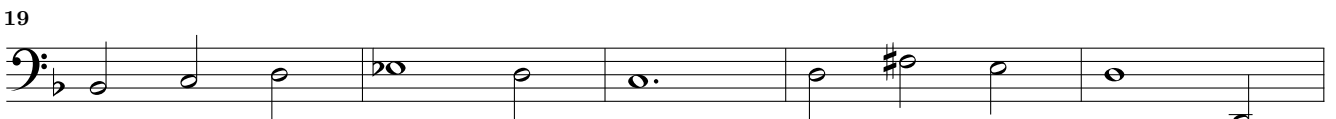
11



15



19



24



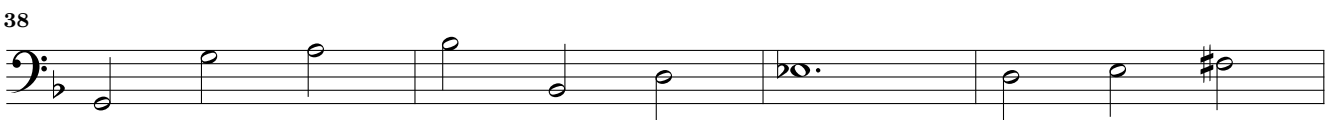
28



33

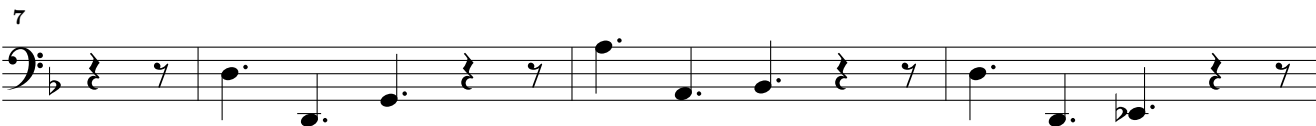


38



42





Basso

Sonata V

Tomaso Albinoni (1671-1750)

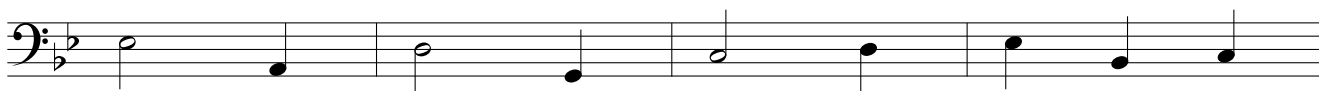
Adagio



6



11



15



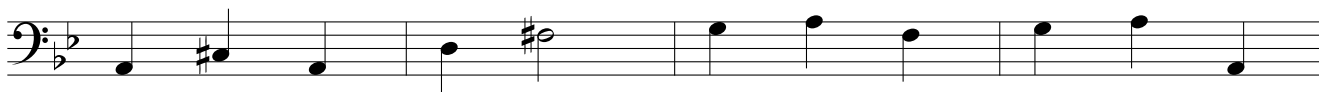
20



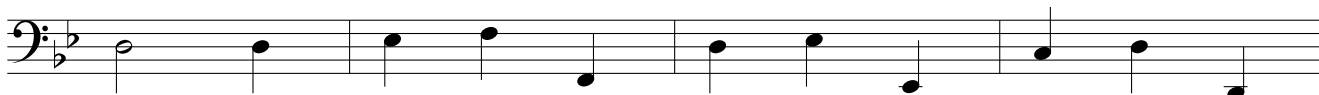
25



29



33



37



42





5



8



11



14



17



20



23



26



29



33



36



40



Adagio



6



11



16



22



28



33



Presto



6



11



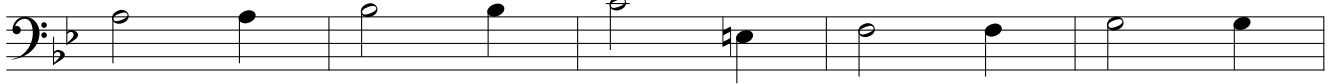
17



21



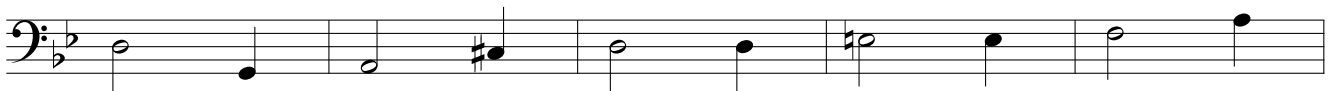
26



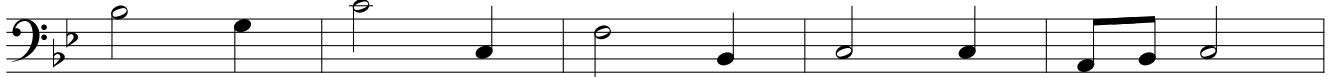
31



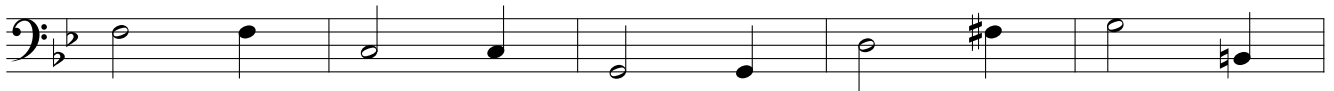
36



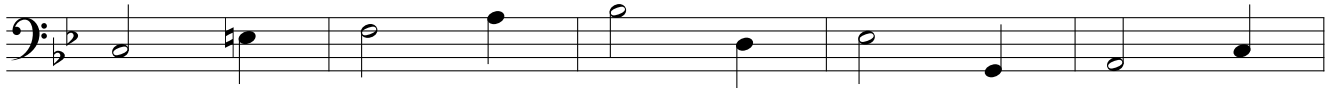
41



46



51



56



62



Basso

Sonata VI

Tomaso Albinoni (1671-1750)

Largo

Musical score for the Largo section of Sonata VI in G major by Tomaso Albinoni, Bassoon part. The score is written in bass clef with a key signature of one sharp (F#) and a common time signature (C). It consists of six staves of music, with measure numbers 4, 7, 10, 12, and 15 indicated at the beginning of their respective staves. The music features a slow, melodic line with various rhythmic values including quarter, eighth, and sixteenth notes, as well as rests and accidentals.

Allegro

Musical score for the Allegro section of Sonata VI in G major by Tomaso Albinoni, Bassoon part. The score is written in bass clef with a key signature of one sharp (F#) and a common time signature (C). It consists of five staves of music, with measure numbers 2, 5, 7, 9, and 12 indicated at the beginning of their respective staves. The music is characterized by a faster tempo and includes a variety of rhythmic patterns such as eighth and sixteenth notes, often beamed together, and some triplets. The section concludes with a final measure on the fifth staff.

15



17



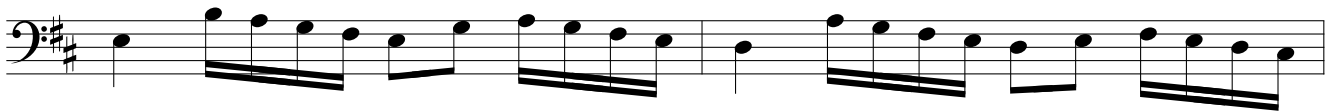
19



21



24



26



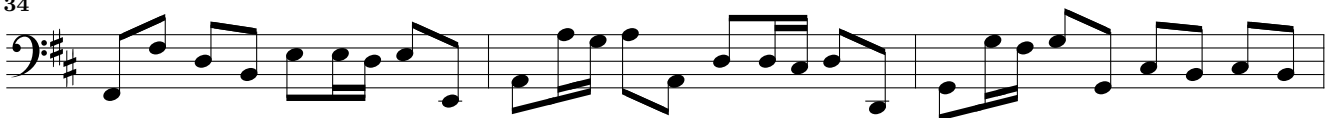
28



31



34



37



39



Adagio

Sonata VI Basso



Allegro

