

Solo Violoncello

Mayeem

For Violoncello & Orchestra

Daniel Léo Simpson
March 1998
San Carlos, California

Allegro con moto ♩=144

3 rit. 2 **A** Tempo I ♩=144

f

9 5

f

18 **B** meno mosso ♩=130

mp

22 accel. tr~

cresc. *f*

25 **C** Tempo I ♩=144

f

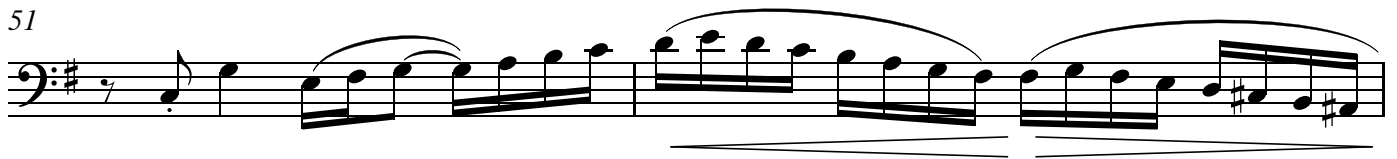
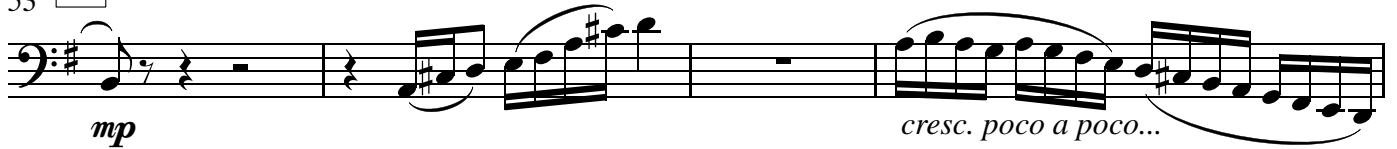
31

33 **D** meno mosso ♩=130 rit.

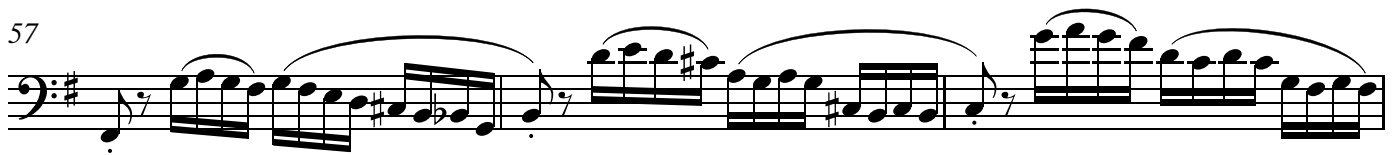
rall. *f* *rit.*

45 **E** un poco meno mosso ♩=13848 *delicato*
mp

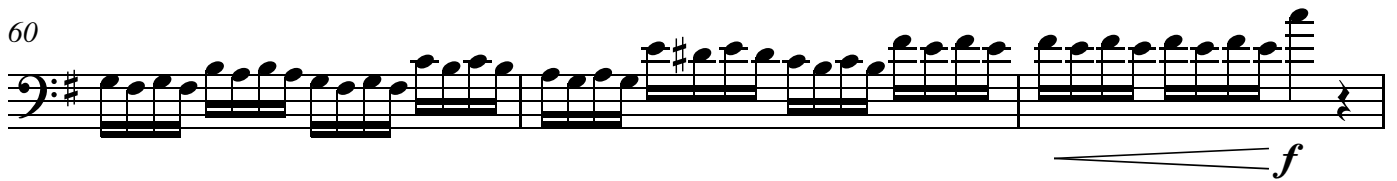
51

53 **F**

57



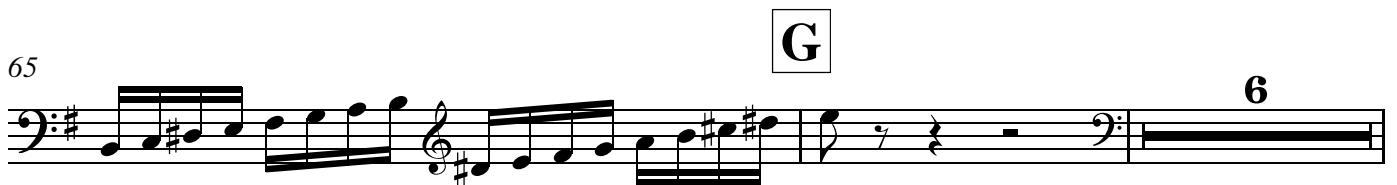
60



63



65



73 **H** *rall.* **I** *Moderato assai* ♩=120

4 8 *mf* *tr*

Detailed description: This musical staff begins at measure 73 with a box labeled 'H' and a 4-measure rest. It continues with an 8-measure rest, then a double bar line and a 3/8 time signature. The music starts with a half note G3, followed by eighth notes A3, B3, C4, D4, E4, F4, G4, and A4. A trill is marked over the G4 note. The dynamic is *mf*.

88 *tr* *mp*

Detailed description: This musical staff begins at measure 88 with a trill over the G4 note. The music continues with eighth notes A4, B4, C5, D5, E5, F5, G5, and A5. The dynamic is *mp*.

92 *tr~* *f* *mp*

Detailed description: This musical staff begins at measure 92 with a trill over the G4 note. The music continues with eighth notes A4, B4, C5, D5, E5, F5, G5, and A5. The dynamic is *f*, then *mp*.

96 *mf* *mp*

Detailed description: This musical staff begins at measure 96 with a half note G3. The music continues with eighth notes A3, B3, C4, D4, E4, F4, G4, and A4. The dynamic is *mf*, then *mp*.

100 *cresc.*

Detailed description: This musical staff begins at measure 100 with eighth notes A3, B3, C4, D4, E4, F4, G4, and A4. The dynamic is *cresc.*

103 *accel.* 4

Detailed description: This musical staff begins at measure 103 with eighth notes A3, B3, C4, D4, E4, F4, G4, and A4. The dynamic is *accel.*. The staff ends with a 4-measure rest.

110 *Tempo giusto* ♩=144 **5**

Detailed description: This musical staff begins at measure 110 with a 5-measure rest. The dynamic is *Tempo giusto* ♩=144. The staff ends with a double bar line and a 2/4 time signature.

115 **J**

mf

118

f

121

f *mf*

125

129 **K**

mp

133 **L**

f

142 **M**

mp

146 **N** **O** un poco meno mosso ♩=138

mp < > < > >

156 *mf*

159 *mp*

160

161

163 *mp*

167 *poco accel.*
cresc. poco a poco...

170

173 *f*

175

177

P Tempo giusto ♩=144 rall.

14 3

Moderato assai ♩=120

Q

196

mf

tr

200

tr

204

f *mf*

208

mp *mf* *mp*

211

mf *mp*

214

accel.

4

Tempo I ♩=144

221 **R** **S**

5 4

mf *tr* *tr* *tr* *tr*

233

mf

237

2

243 **T**

4

f

249 poco rit. molto rall, a tempo ♩=144

f *ff*