

Allegro moderato.

Handwritten musical notation for the first system, featuring a treble clef, a key signature of two flats, and a 3/4 time signature. The music consists of a melodic line with eighth-note patterns and a bass line with chords and a few notes. A dynamic marking 'p' is present in the bass line.

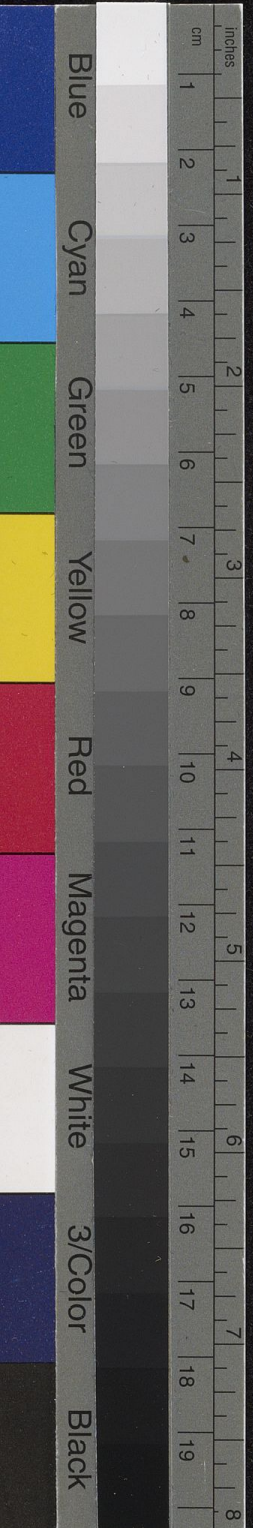
Handwritten musical notation for the second system, continuing the piece. It includes a treble clef, two flats, and a 3/4 time signature. The notation shows a melodic line with a 'crescendo' marking and a bass line with chords. A 'crescendo sf' marking is also visible in the bass line.

Handwritten musical notation for the third system, featuring a treble clef, two flats, and a 3/4 time signature. The music is characterized by a dense, rhythmic melodic line in the treble and a bass line with chords.

Handwritten musical notation for the fourth system, featuring a treble clef, two flats, and a 3/4 time signature. The notation shows a melodic line with eighth-note patterns and a bass line with chords.

Handwritten musical notation for the fifth system, featuring a treble clef, two flats, and a 3/4 time signature. The music includes a melodic line with eighth-note patterns and a bass line with chords. A dynamic marking 'p' is present in the bass line.

Two empty musical staves at the bottom of the page.





Handwritten musical notation on a system of three staves. The top staff is in treble clef with a key signature of one flat and contains melodic lines with trills marked 'tr'. The middle staff is in treble clef with a key signature of one flat, featuring dense sixteenth-note passages. The bottom staff is in bass clef with a key signature of two flats, containing harmonic accompaniment.

Handwritten musical notation on a system of three staves. The top staff is in treble clef with a key signature of one flat, showing melodic lines. The middle staff is in treble clef with a key signature of one flat, with dense sixteenth-note passages. The bottom staff is in bass clef with a key signature of two flats, with harmonic accompaniment.

Handwritten musical notation on a system of three staves. The top staff is in treble clef with a key signature of one flat, containing melodic lines with trills marked 'tr'. The middle staff is in treble clef with a key signature of one flat, featuring dense sixteenth-note passages. The bottom staff is in bass clef with a key signature of two flats, containing harmonic accompaniment with markings like 'Ped.' and '\*B'.

Handwritten musical notation on a system of three staves. The top staff is in treble clef with a key signature of one flat, containing melodic lines. The middle staff is in treble clef with a key signature of one flat, with dense sixteenth-note passages. The bottom staff is in bass clef with a key signature of two flats, with harmonic accompaniment and markings like 'p'.

Handwritten musical notation on a system of three staves. The top staff is in treble clef with a key signature of one flat, containing melodic lines with first and second endings marked '1.' and '2.'. The middle staff is in treble clef with a key signature of one flat, with dense sixteenth-note passages. The bottom staff is in bass clef with a key signature of two flats, with harmonic accompaniment. The word 'sempre piano' is written in the right margin.

Handwritten musical notation on a system of three staves. The top staff is in treble clef with a key signature of one flat, containing melodic lines with first and second endings marked '1.' and '2.'. The middle staff is in treble clef with a key signature of one flat, with dense sixteenth-note passages. The bottom staff is in bass clef with a key signature of two flats, with harmonic accompaniment. The word 'sempre piano' is written in the right margin.





Handwritten musical notation on a three-staff system. The top staff is in treble clef, the middle in alto clef, and the bottom in bass clef. The music features a melodic line in the upper staves and a more rhythmic accompaniment in the lower staff. A dynamic marking *p.* is visible at the beginning of the first staff.

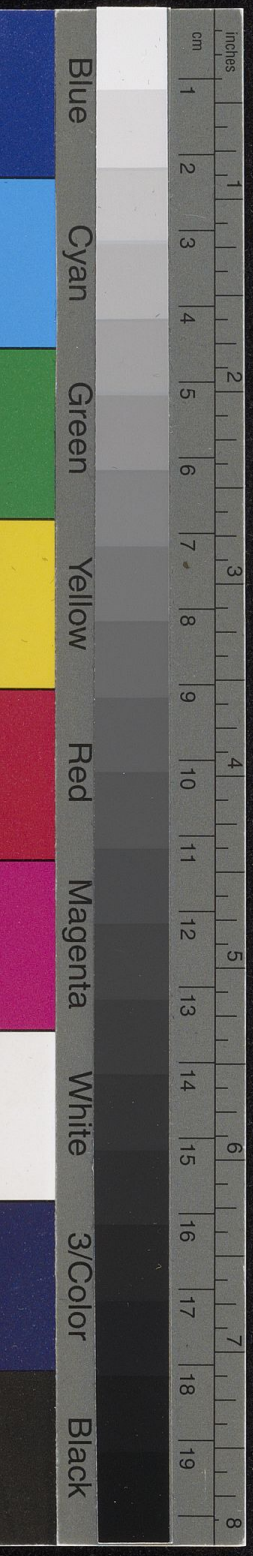
Handwritten musical notation on a three-staff system. The notation continues with various rhythmic patterns and melodic fragments. Dynamic markings *crescen* and *crescendo* are present on the right side of the system.

Handwritten musical notation on a three-staff system. This system includes several dynamic markings: *tr.*, *cresc.*, *tr.*, *cresc.*, *f*, *cresc.*, and *cresc.* scattered across the staves.

Handwritten musical notation on a three-staff system. The notation shows a continuation of the musical themes, with some staves featuring more complex rhythmic structures.

Handwritten musical notation on a three-staff system. The bottom staff of this system shows a dense, rhythmic accompaniment with many beamed notes.

Handwritten musical notation on a three-staff system, which appears to be mostly blank or contains very faint, illegible markings.









Handwritten musical notation on a three-staff system. The top staff is in treble clef, the middle in alto clef, and the bottom in bass clef. The music features various note values, rests, and dynamic markings such as *pp* and *p*. The notation is dense and includes many slurs and ties.

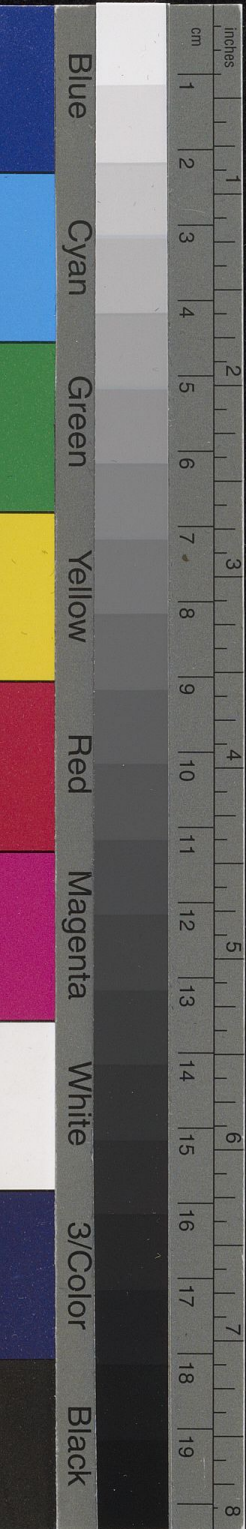
Handwritten musical notation on a three-staff system. The top staff is in treble clef, the middle in alto clef, and the bottom in bass clef. The music continues with complex rhythmic patterns and dynamic markings like *pp* and *p*.

Handwritten musical notation on a three-staff system. The top staff is in treble clef, the middle in alto clef, and the bottom in bass clef. The notation includes many slurs and ties, with dynamic markings such as *p*.

Handwritten musical notation on a three-staff system. The top staff is in treble clef, the middle in alto clef, and the bottom in bass clef. The music features complex rhythmic patterns and dynamic markings like *p*.

Handwritten musical notation on a three-staff system. The top staff is in treble clef, the middle in alto clef, and the bottom in bass clef. The notation includes many slurs and ties, with dynamic markings such as *p*.

Empty musical staves at the bottom of the page, consisting of three blank staves.



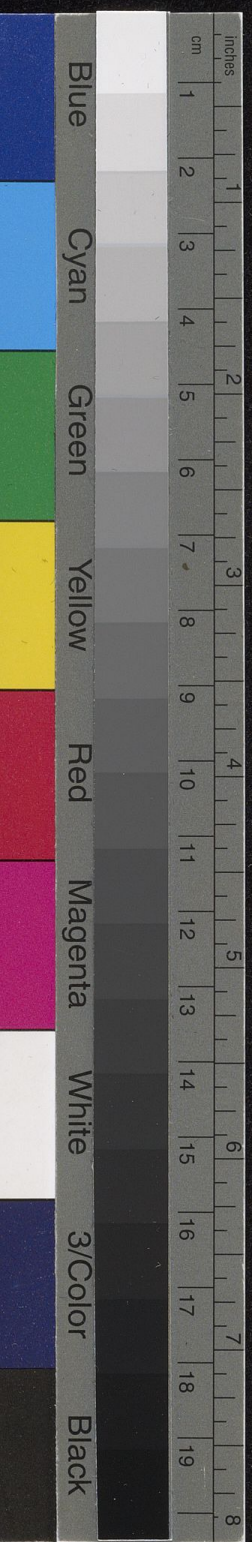
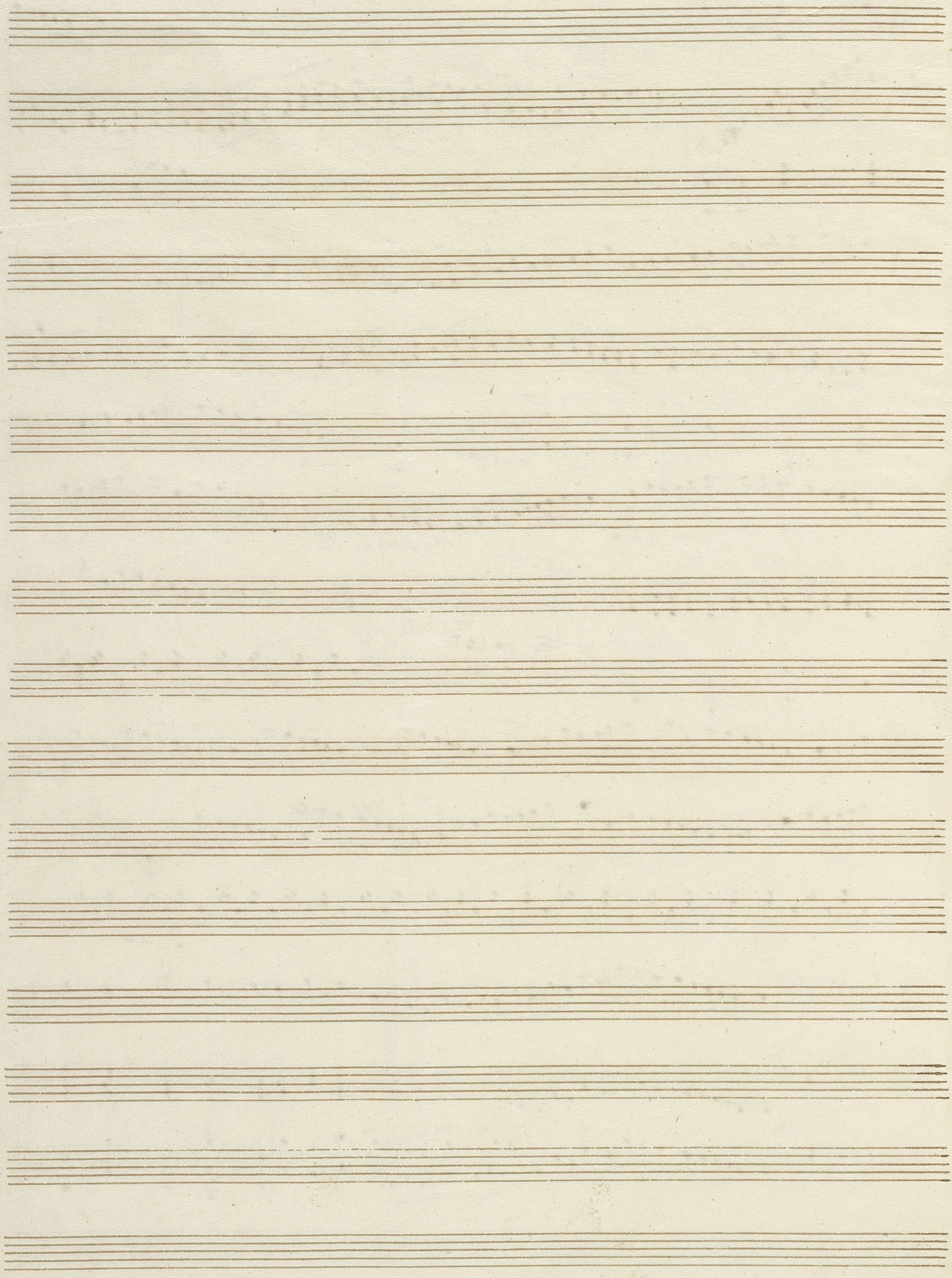


Handwritten musical score on page 17, featuring multiple systems of staves with notes, rests, and dynamic markings such as "crescendo", "mf", and "p". The score includes various musical notations like slurs, accents, and dynamic markings. The piece concludes with a large, decorative flourish.

D. 17 April









This image shows a page from a music manuscript book, numbered 19 in the top right corner. The page is filled with 18 horizontal musical staves, each consisting of five lines. The staves are arranged in a regular, repeating pattern down the page. The paper is off-white and shows some signs of age, such as slight discoloration and faint smudges. The left edge of the page shows the binding of the book, and the right edge shows the decorative inner cover of the book.

