

*Sinfonia à Flauto solo del sig.<sup>ro</sup> Giuseppe Valentini*

35

*Flauto*

*Volta segue*

Handwritten musical notation, first system. It consists of two staves. The top staff is in treble clef with a common time signature (C) and contains a melodic line with many beamed notes. The bottom staff is in bass clef with a common time signature (C) and contains a bass line with fewer notes. The word "Allegro" is written in the left margin.

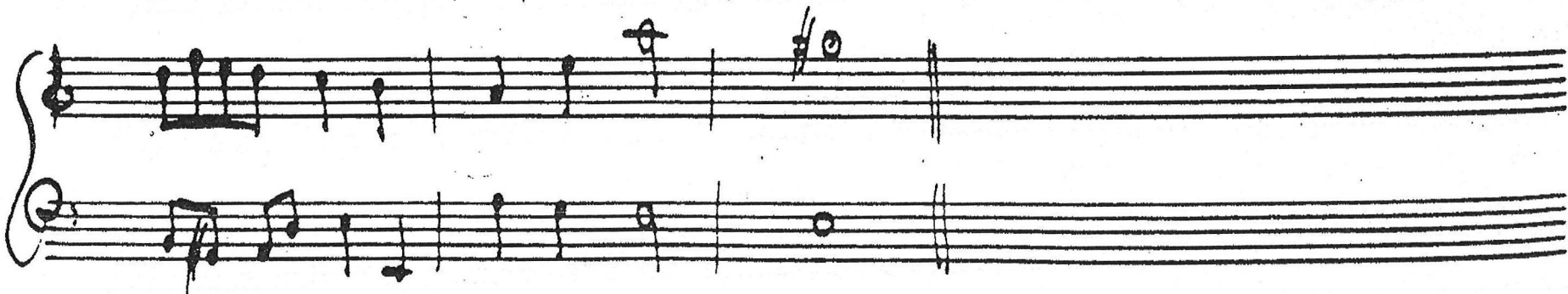
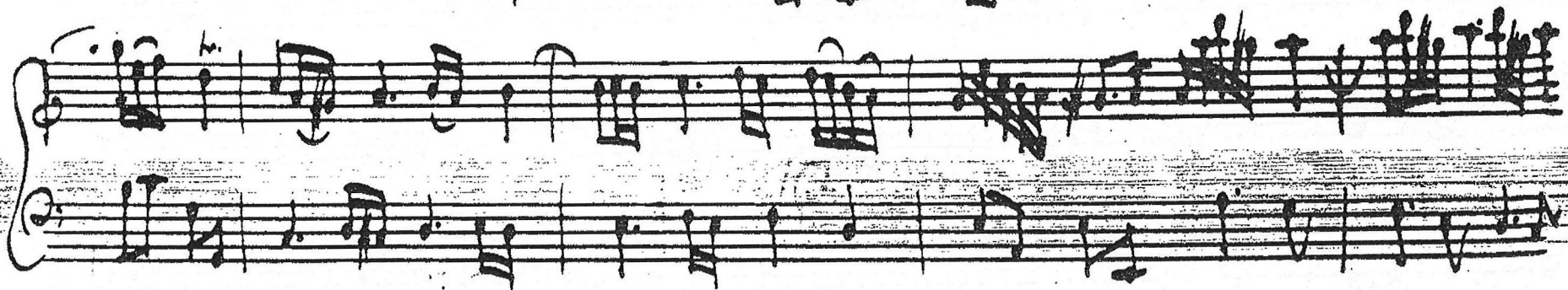
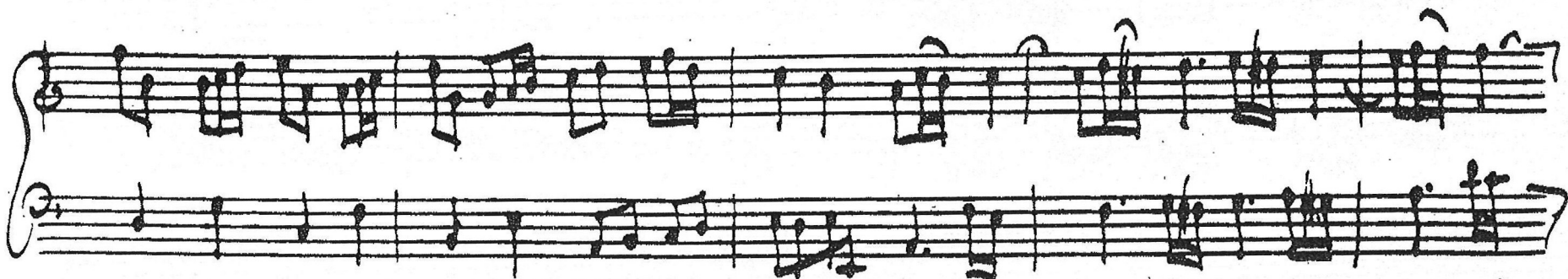
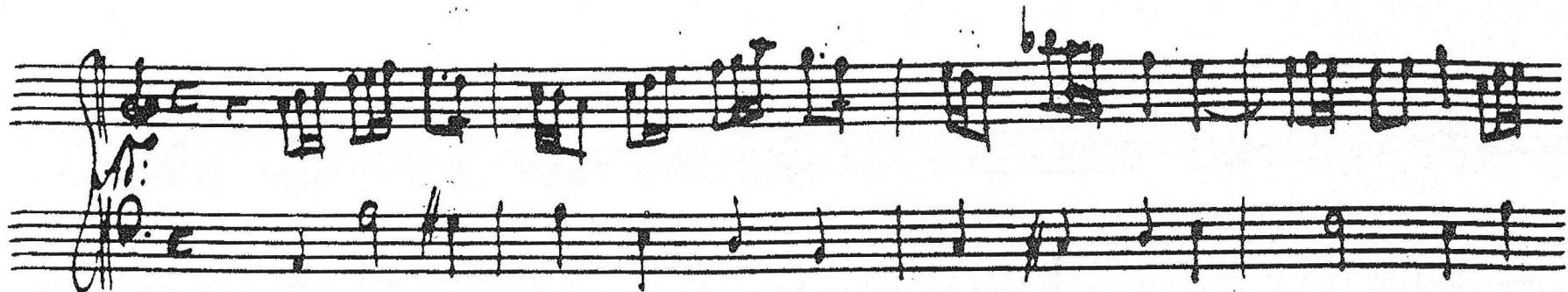
Handwritten musical notation, second system. It consists of two staves. The top staff is in treble clef and contains a complex melodic line with many beamed notes. The bottom staff is in bass clef and contains a bass line with fewer notes.

Handwritten musical notation, third system. It consists of two staves. The top staff is in treble clef and contains a complex melodic line with many beamed notes. The bottom staff is in bass clef and contains a bass line with fewer notes.

Handwritten musical notation, fourth system. It consists of two staves. The top staff is in treble clef and contains a complex melodic line with many beamed notes. The bottom staff is in bass clef and contains a bass line with fewer notes.

Handwritten musical score for piano, consisting of three systems of two staves each. The notation includes complex chords and melodic lines. The first system has a treble staff with dense chords and a bass staff with a simple line. The second system has a treble staff with a 'h.' marking and a bass staff with a simple line. The third system has a treble staff with a 'h.' marking and a bass staff with a simple line.

Two sets of empty musical staves at the bottom of the page.



Vivace

A handwritten musical score consisting of six systems of staves. The first system includes a treble clef, a 3/4 time signature, and the tempo marking 'Vivace'. The second system includes a bass clef and a 3/4 time signature. The third system is a grand staff with treble and bass clefs. The fourth system is also a grand staff. The fifth system is a grand staff. The sixth system is a grand staff and concludes with the handwritten text 'Voti segue'.

Voti segue

This image displays a handwritten musical score for piano, consisting of six systems of staves. Each system is a grand staff with a treble and bass clef joined by a brace on the left. The notation is dense and expressive, featuring various rhythmic values, slurs, and dynamic markings. The first system includes a fermata over a measure. The second system has a fermata over a measure. The third system features a fermata over a measure. The fourth system has a fermata over a measure. The fifth system has a fermata over a measure. The sixth system has a fermata over a measure. The handwriting is fluid and characteristic of a composer's sketch or a personal manuscript.

Segue

Minuet' Al.

Finis