

# Secõd liure contenãt trois Gaillardes,

TROIS PAVANES, VINGT TROIS BRANLES,  
Tant gays, Simples, Que doubles, Douze basses dances, & Neuf tourdions,  
En somme Cinquante. Le tout ordonne selon les huit tons. Et  
nouuellement imprime en Musique a quatre parties, en ung  
liure seul, par Pierre Attaignant, Imprimeur  
de musique du Roy, demourant a Paris  
en la Rue de la Harpe, pres  
leglise saint Cosme.

1547.

*Avec prerogation du priuilege du Roy, De nouuel obtenu par ledit attaignant  
Pour les liures la par luy imprimez & quil Imprimera cy apres iusques a six ans.*

SVPERIVS

Basse  
dance

Musical staff for Basses, first system. The staff is in treble clef with a key signature of one flat (B-flat) and a 9/8 time signature. The music consists of a series of eighth and sixteenth notes, with some notes beamed together. The staff ends with a double bar line and a repeat sign.

Musical staff for Basses, second system. The staff continues the melody from the first system. It ends with a double bar line and a repeat sign.

Basse  
dance

Musical staff for Basses, third system. This system contains a shorter musical phrase, also in treble clef with a key signature of one flat and a 9/8 time signature. It ends with a double bar line and a repeat sign.

Musical staff for Basses, fourth system. The staff continues the melody. It ends with a double bar line and a repeat sign.

Tenor

Basse  
dance

Musical staff for Tenors, first system. The staff is in treble clef with a key signature of one flat and a 9/8 time signature. The music consists of a series of eighth and sixteenth notes, with some notes beamed together. The staff ends with a double bar line and a repeat sign.

Musical staff for Tenors, second system. The staff continues the melody. It ends with a double bar line and a repeat sign.

Basse  
dance

Musical staff for Tenors, third system. This system contains a shorter musical phrase, also in treble clef with a key signature of one flat and a 9/8 time signature. It ends with a double bar line and a repeat sign.

Musical staff for Tenors, fourth system. The staff continues the melody. It ends with a double bar line and a repeat sign.

CONTRATENOR

Fo II

Basse  
danse

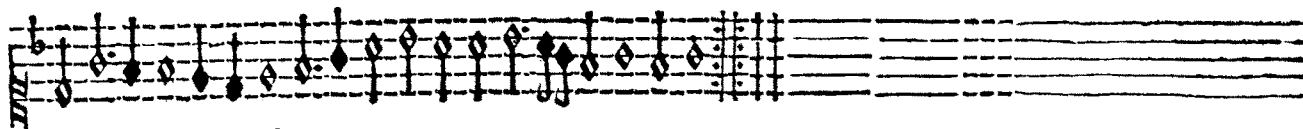
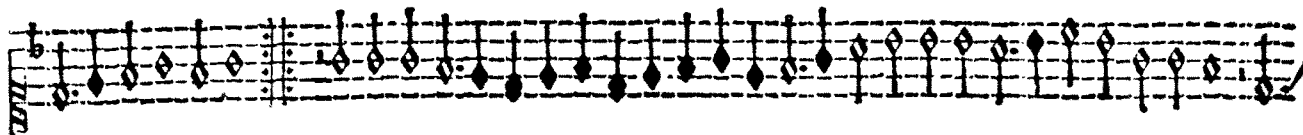
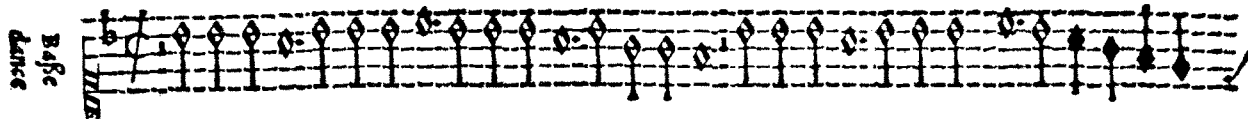
Basse  
danse

BASSVS.

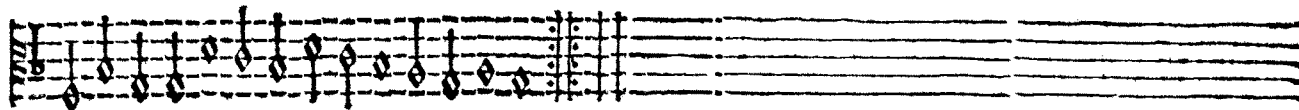
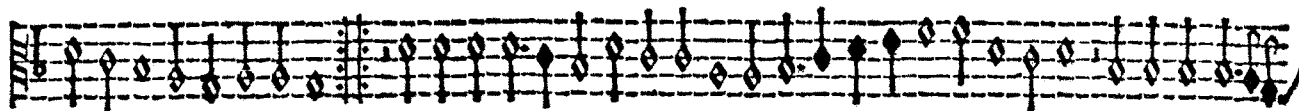
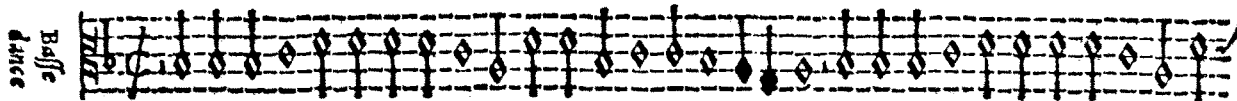
Basse  
danse

Basse  
danse

SUPERIUS



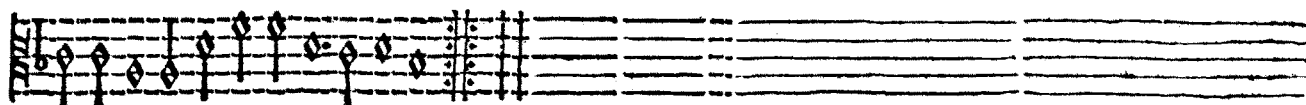
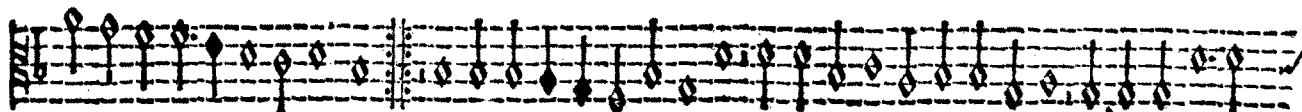
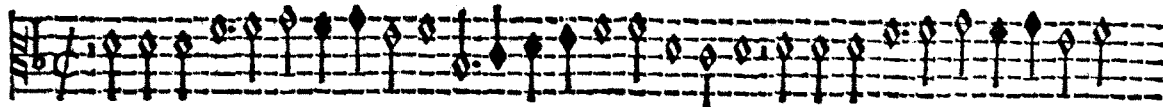
TENOR



CONTRATENOR

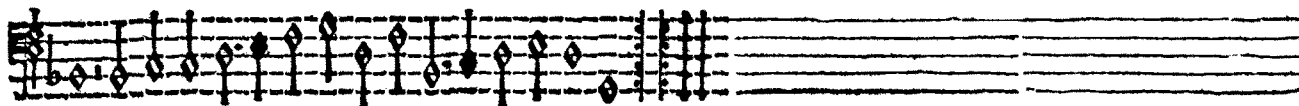
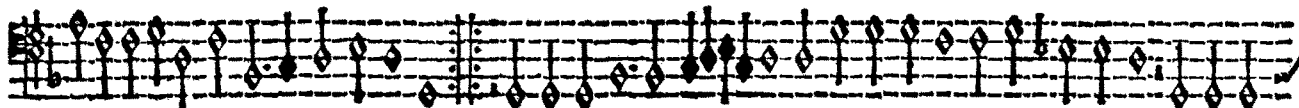
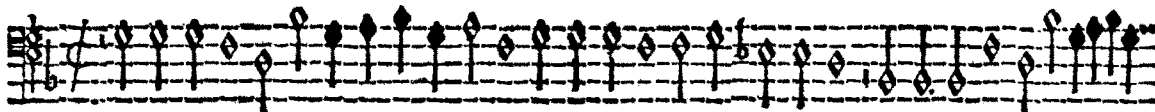
Fo. II F

Basse  
dance



BASSVS

Basse  
dance



SVPERIVS

Basse  
dance

Musical notation for Basses (Basse dance). It consists of three staves. The first two staves contain the melody, and the third staff is empty. The notation includes a treble clef, a key signature of one flat (B-flat), and a common time signature (C). The melody is written in a style characteristic of early modern dance music, featuring a mix of eighth and sixteenth notes with stems pointing up and down.

TENOR

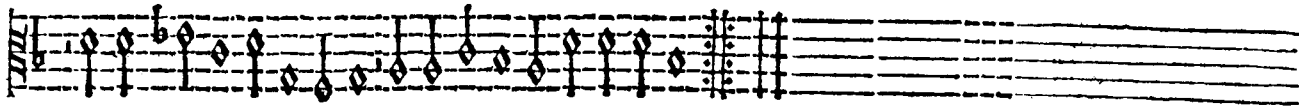
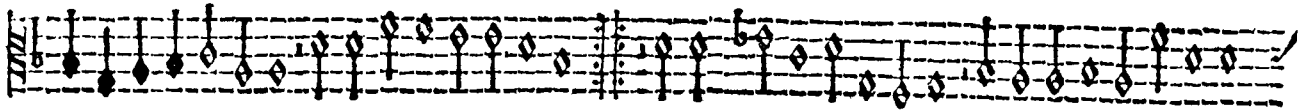
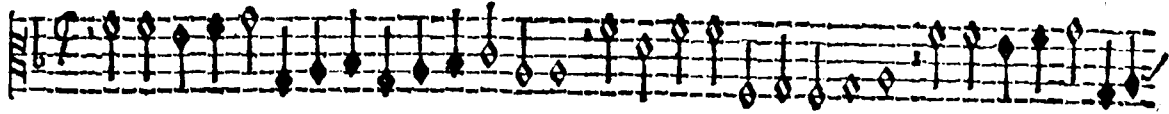
Basse  
dance

Musical notation for Tenors (Basse dance). It consists of three staves. The first two staves contain the melody, and the third staff is empty. The notation includes a treble clef, a key signature of one flat (B-flat), and a common time signature (C). The melody is written in a style characteristic of early modern dance music, featuring a mix of eighth and sixteenth notes with stems pointing up and down.

CONTRATENOR

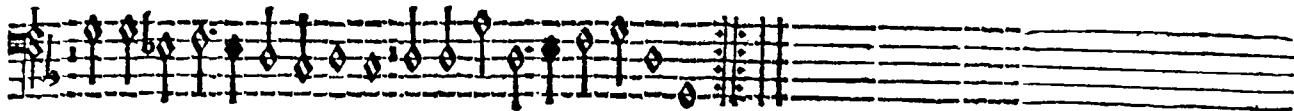
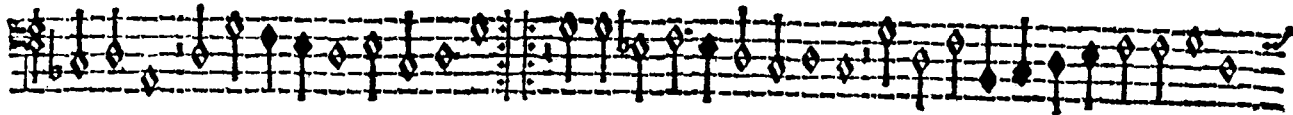
Fo III I

Ba//  
dance



BASSVS

Ba//  
dance

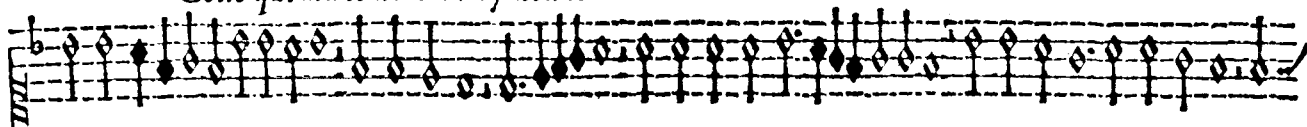


SVPERIVS

Basse  
dançe

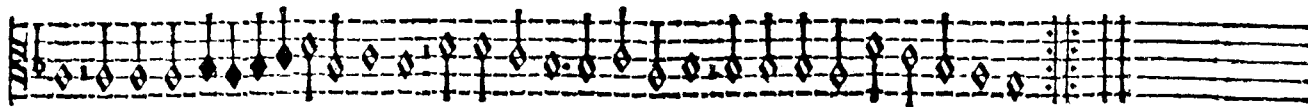
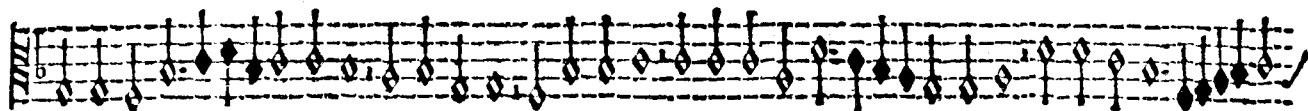
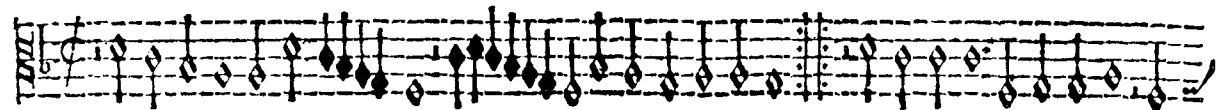


*Celle qui ma le nom d'amy donne*



TENOR

Basse  
dançe

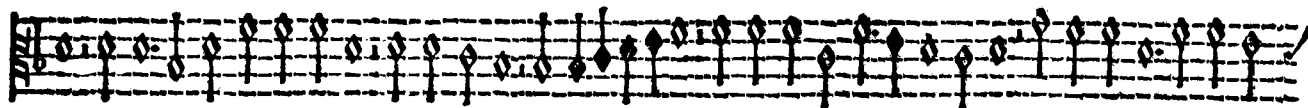




CONTRATENOR

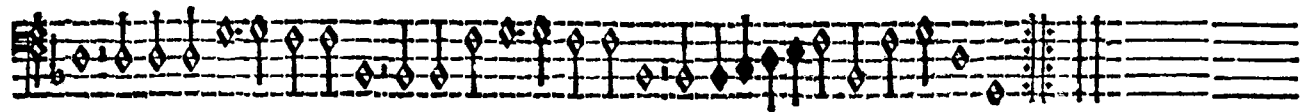
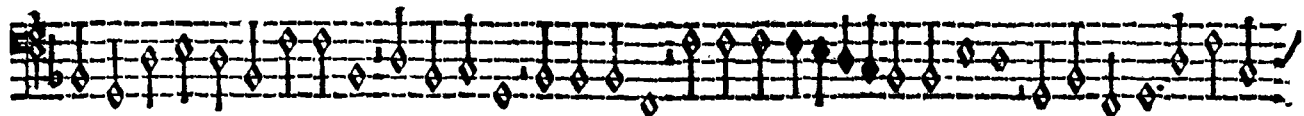
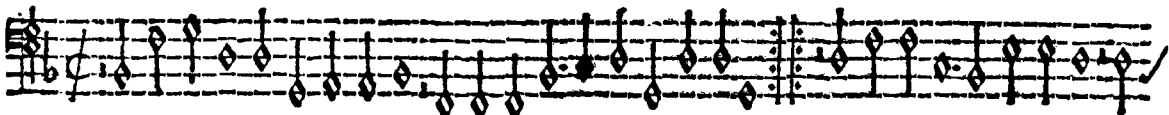
Fo. V

Basse  
adance



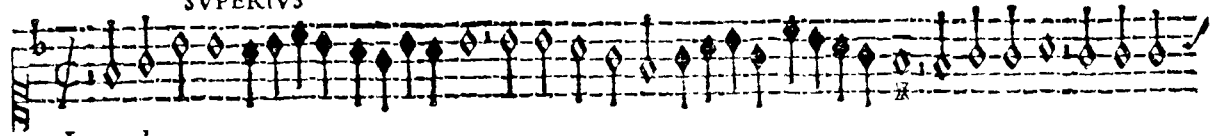
BASSVS

Basse  
adance

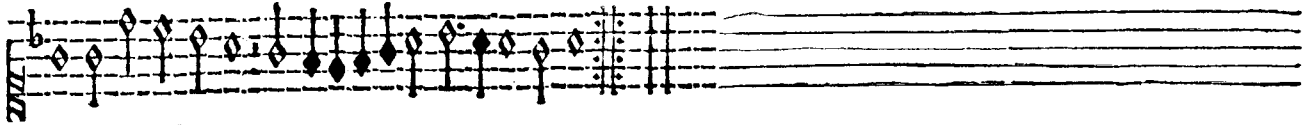
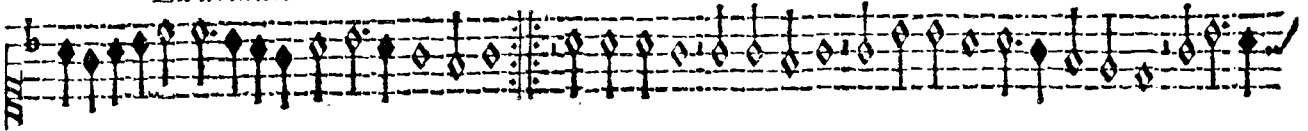


SVPERIVS

Basse  
dame

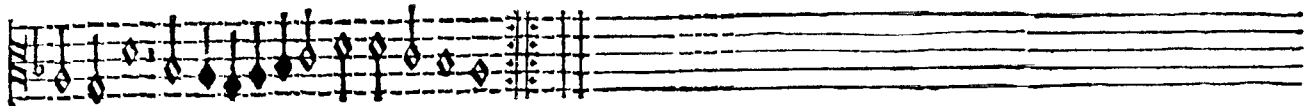
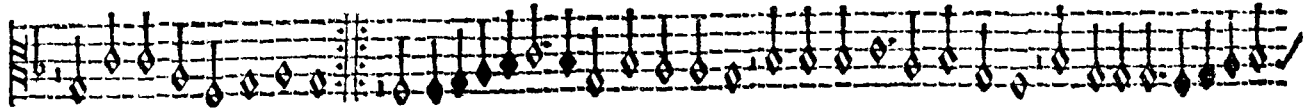
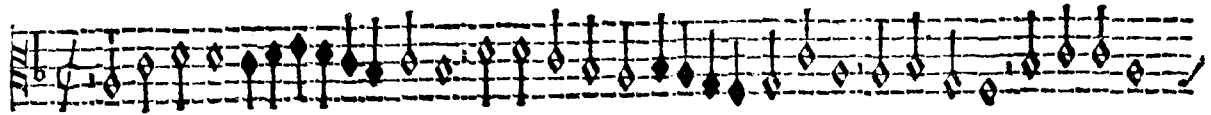


La volonte



TENOR

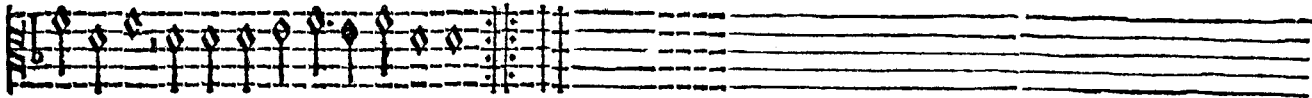
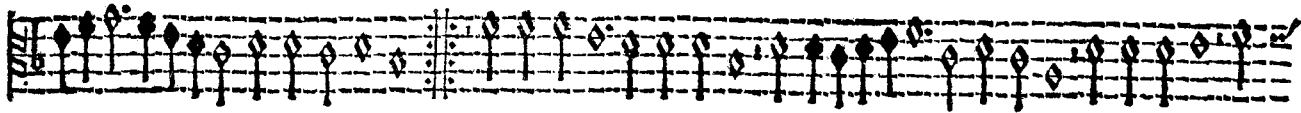
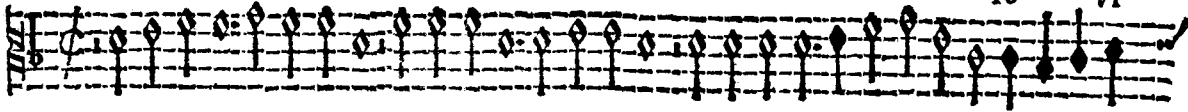
Basse  
dame



CONTRATENOR

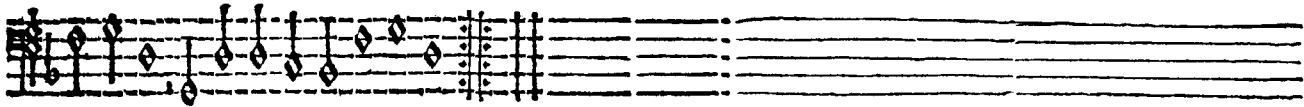
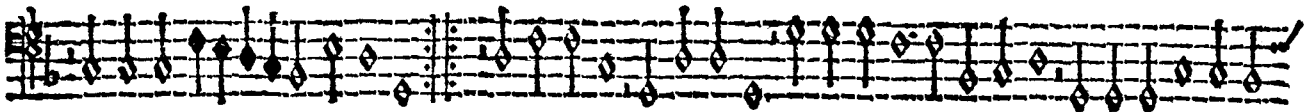
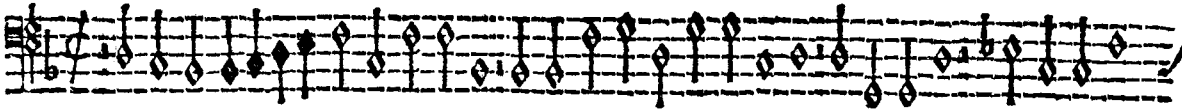
Fo VI

Buffe  
dance



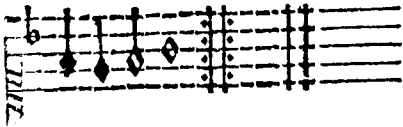
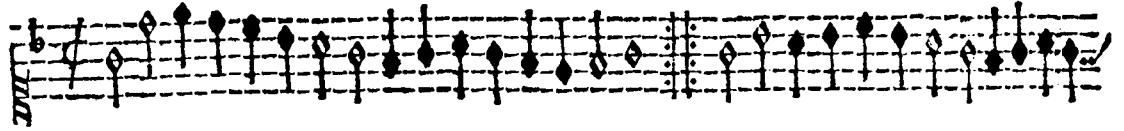
BASSVS

Buffe  
dance

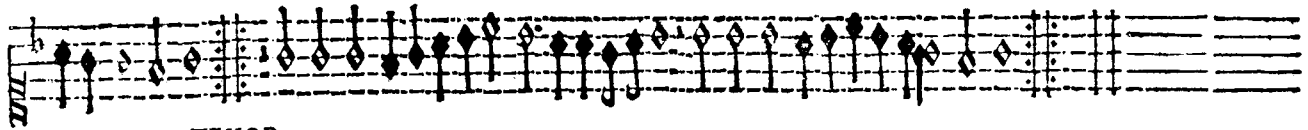
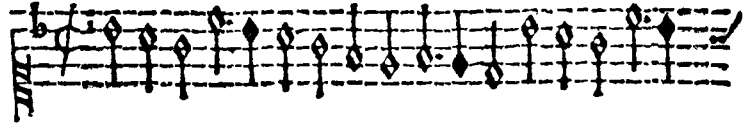


SUPERIUS

Tourdion

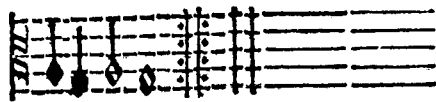
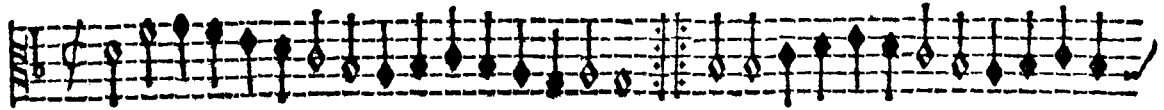


Tourdion

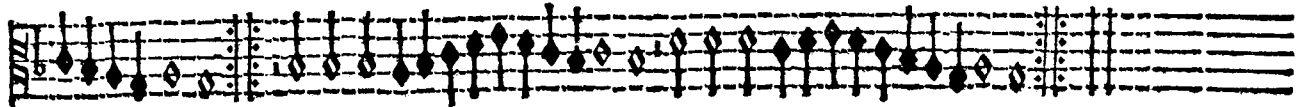
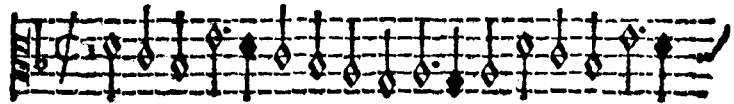


TENOR

Tourdion

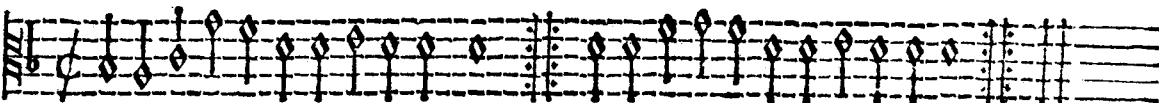


Tourdion



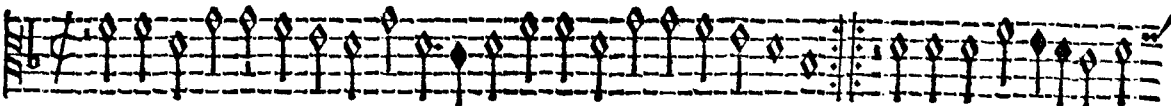
CONTRATENOR

*Tourdion*

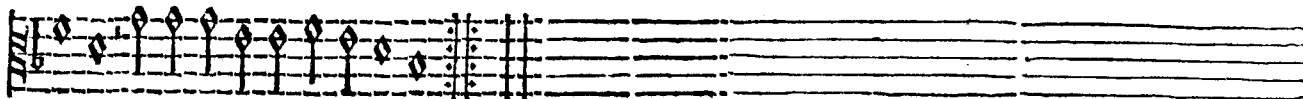


A musical staff for Contratenor, first system. It begins with a treble clef, a key signature of one flat (B-flat), and a common time signature. The melody consists of quarter and eighth notes, with some notes beamed together. The staff ends with a double bar line and repeat signs.

*Tourdion*



A musical staff for Contratenor, second system. It continues the melody from the first system, ending with a double bar line and repeat signs.



A musical staff for Contratenor, third system. It shows the beginning of the melody on the left, followed by three empty staves.

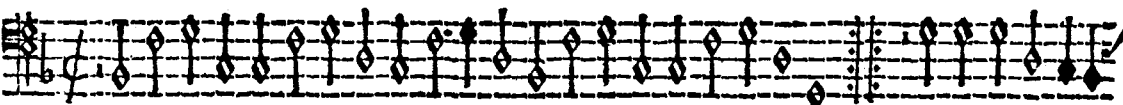
BASSVS.

*Tourdion*

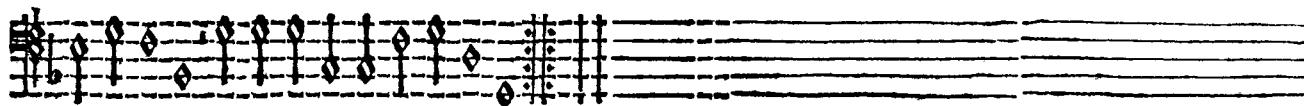


A musical staff for Bass, first system. It begins with a bass clef, a key signature of one flat (B-flat), and a common time signature. The melody consists of quarter and eighth notes, with some notes beamed together. The staff ends with a double bar line and repeat signs.

*Tourdion*



A musical staff for Bass, second system. It continues the melody from the first system, ending with a double bar line and repeat signs.



A musical staff for Bass, third system. It shows the beginning of the melody on the left, followed by three empty staves.

SUPERIUS

Tour dion

Musical staff for Soprano (SUPERIUS) in G major, 4/4 time. The staff begins with a treble clef, a key signature of one sharp (F#), and a common time signature. The melody consists of quarter and eighth notes, with some rests. The staff ends with a double bar line and repeat dots.

Musical staff for Soprano (SUPERIUS) in G major, 4/4 time. The staff begins with a treble clef, a key signature of one sharp (F#), and a common time signature. The melody consists of quarter and eighth notes, with some rests. The staff ends with a double bar line and repeat dots.

Tour dion

Musical staff for Soprano (SUPERIUS) in G major, 4/4 time. The staff begins with a treble clef, a key signature of one sharp (F#), and a common time signature. The melody consists of quarter and eighth notes, with some rests. The staff ends with a double bar line and repeat dots.

Musical staff for Soprano (SUPERIUS) in G major, 4/4 time. The staff begins with a treble clef, a key signature of one sharp (F#), and a common time signature. The melody consists of quarter and eighth notes, with some rests. The staff ends with a double bar line and repeat dots.

TENOR

Tour dion

Musical staff for Tenor (TENOR) in G major, 4/4 time. The staff begins with a treble clef, a key signature of one sharp (F#), and a common time signature. The melody consists of quarter and eighth notes, with some rests. The staff ends with a double bar line and repeat dots.

Musical staff for Tenor (TENOR) in G major, 4/4 time. The staff begins with a treble clef, a key signature of one sharp (F#), and a common time signature. The melody consists of quarter and eighth notes, with some rests. The staff ends with a double bar line and repeat dots.

Tour dion

Musical staff for Tenor (TENOR) in G major, 4/4 time. The staff begins with a treble clef, a key signature of one sharp (F#), and a common time signature. The melody consists of quarter and eighth notes, with some rests. The staff ends with a double bar line and repeat dots.

Musical staff for Tenor (TENOR) in G major, 4/4 time. The staff begins with a treble clef, a key signature of one sharp (F#), and a common time signature. The melody consists of quarter and eighth notes, with some rests. The staff ends with a double bar line and repeat dots.

CONTRATENOR

Es viii

Tour dion

Musical staff for Contratenor, first system. It begins with a treble clef, a key signature of one flat (B-flat), and a common time signature. The melody consists of a series of eighth notes, starting on G4 and moving generally upwards, with some chromaticism. The staff ends with a double bar line and repeat dots.

Musical staff for Contratenor, second system (left). It continues the melody from the first system, ending with a double bar line and repeat dots.

Tour dion

Musical staff for Contratenor, second system (right). It continues the melody from the first system, ending with a double bar line and repeat dots.

BASSVS

Tour dion

Musical staff for Bassus, first system. It begins with a bass clef, a key signature of one flat (B-flat), and a common time signature. The melody consists of a series of eighth notes, starting on G3 and moving generally upwards, with some chromaticism. The staff ends with a double bar line and repeat dots.

Musical staff for Bassus, second system (left). It continues the melody from the first system, ending with a double bar line and repeat dots.

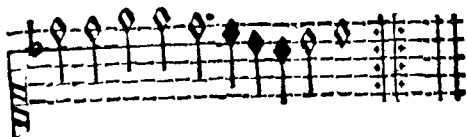
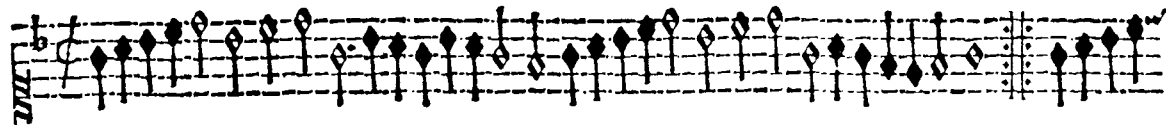
Tour dion

Musical staff for Bassus, second system (right). It continues the melody from the first system, ending with a double bar line and repeat dots.

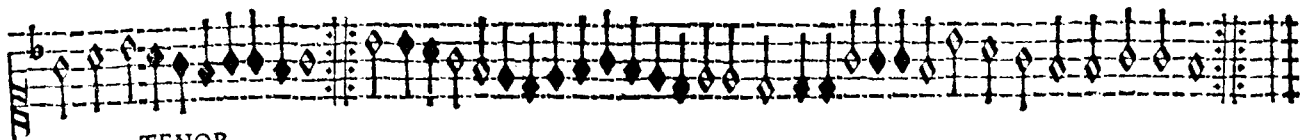
Musical staff for Bassus, third system. It continues the melody from the first system, ending with a double bar line and repeat dots.

SVPERIVS

Branle



Branle

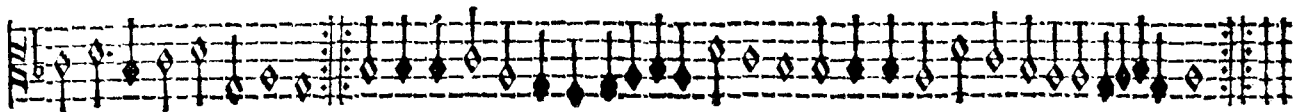


TENOR

Branle



Branle

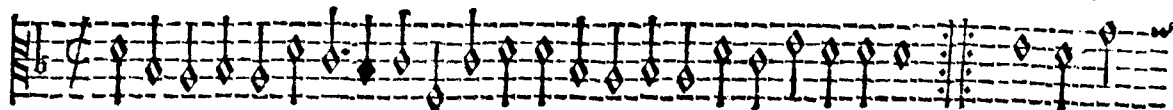




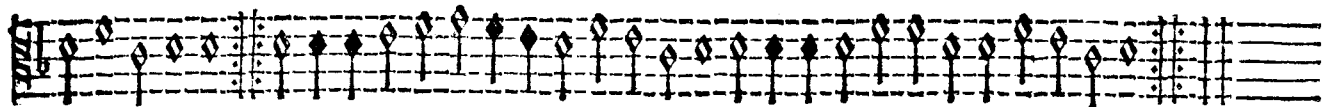
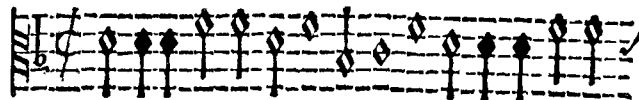
CONTRATENOR

Fo IX

Branle

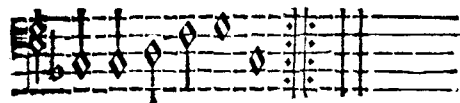
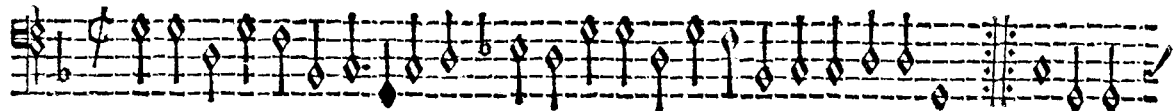


Branle

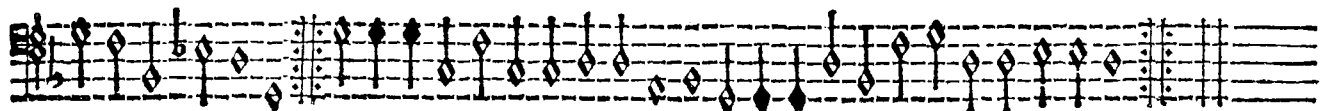
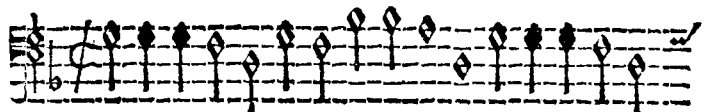


BASSVS

Branle

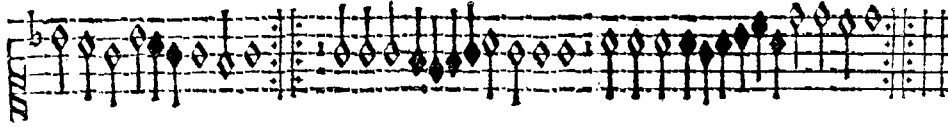


Branle



SUPERIUS

Tromboni

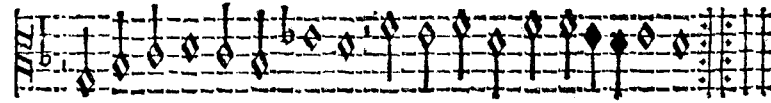
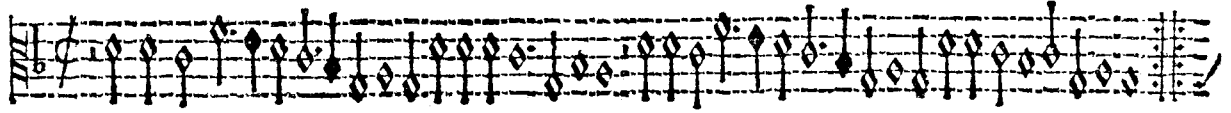


Brante

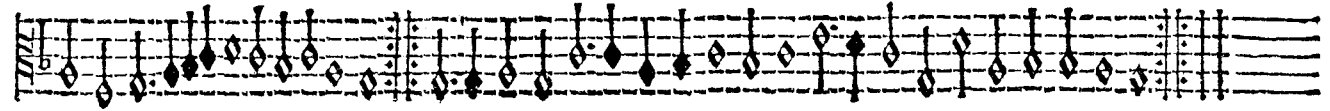
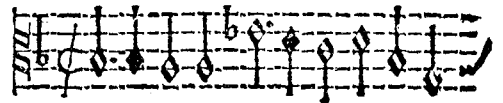


TENOR

Tromboni



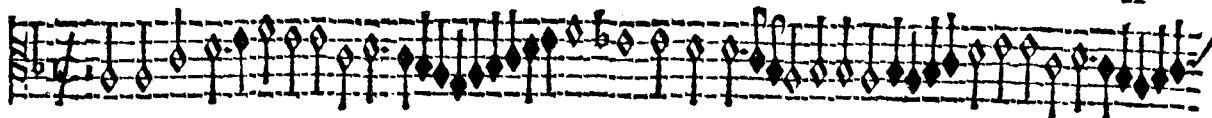
Brante



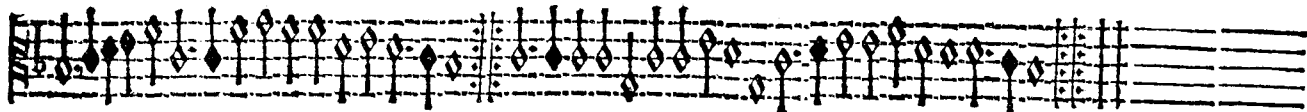
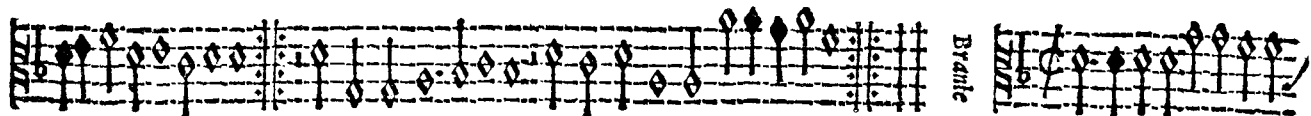
CONTRATENOR

Fo X

Tour dion

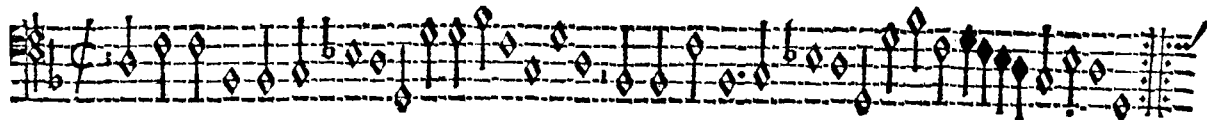


Branle

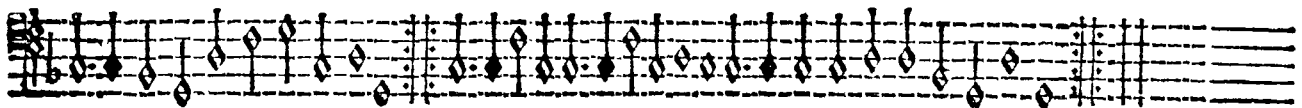
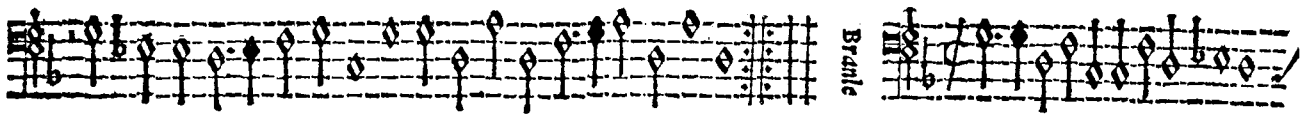


BASSVS

Tour dion

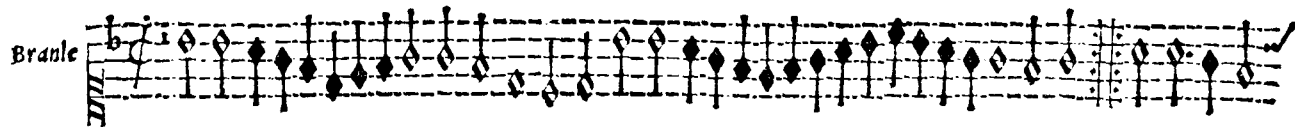


Branle

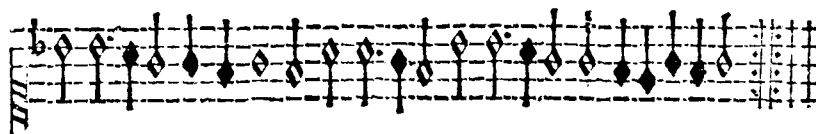


SVPERIVS

Branle

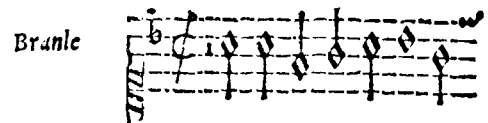


A musical staff in G major (one sharp) and 6/8 time. It begins with a treble clef, a key signature of one sharp (F#), and a common time signature of 6/8. The melody consists of eighth and sixteenth notes, with some beamed pairs. The staff ends with a double bar line and a repeat sign.

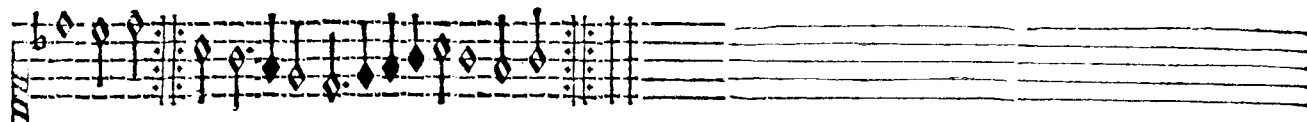


A musical staff in G major and 6/8 time, continuing the melody from the first staff. It features similar rhythmic patterns and note values.

Branle



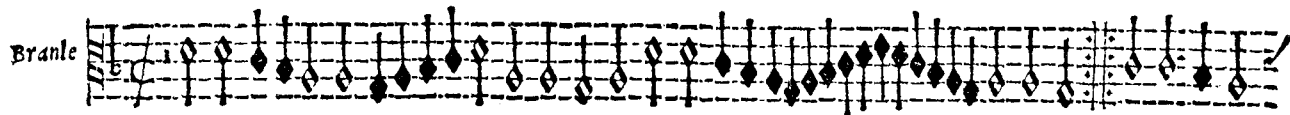
A musical staff in G major and 6/8 time, continuing the melody. It starts with a treble clef, a key signature of one sharp, and a 6/8 time signature. The staff ends with a double bar line and a repeat sign.



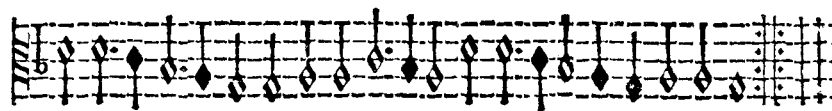
A musical staff in G major and 6/8 time, continuing the melody. It features similar rhythmic patterns and note values.

TENOR

Branle

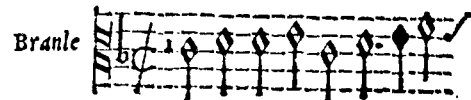


A musical staff in G major and 6/8 time. It begins with a treble clef, a key signature of one sharp, and a common time signature of 6/8. The melody consists of eighth and sixteenth notes, with some beamed pairs. The staff ends with a double bar line and a repeat sign.



A musical staff in G major and 6/8 time, continuing the melody from the first staff. It features similar rhythmic patterns and note values.

Branle



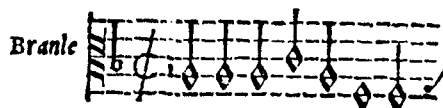
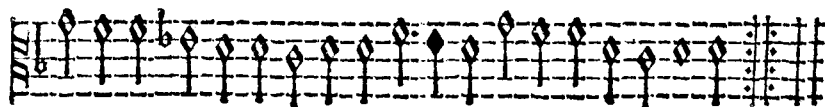
A musical staff in G major and 6/8 time, continuing the melody. It starts with a treble clef, a key signature of one sharp, and a 6/8 time signature. The staff ends with a double bar line and a repeat sign.



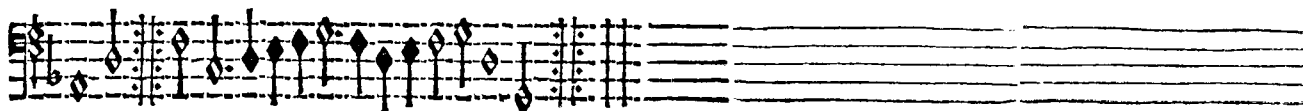
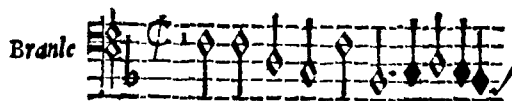
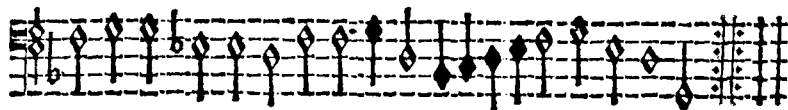
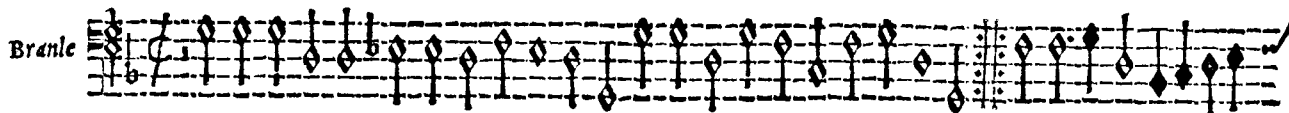
A musical staff in G major and 6/8 time, continuing the melody. It features similar rhythmic patterns and note values.

CONTRATENOR

Fo. XI



BASSVS.



SUPERIUS

Braille

Braille

TENOR

Braille

Braille

CONTRATENOR.

Fo X/7

Braille

Braille

BASSVS

Braille

Braille

SVPERIVS

Basse  
danse

TENOR

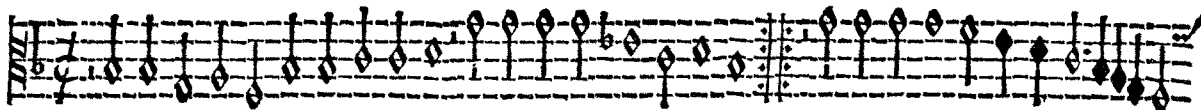
Basse  
danse



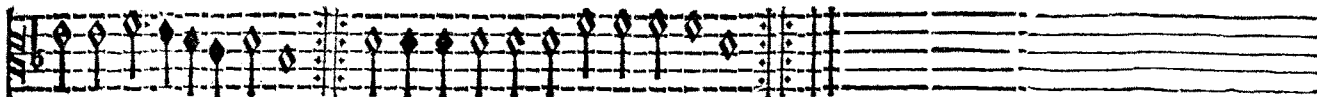
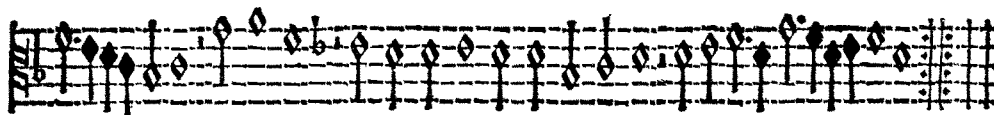
CONTRATENOR

Fo. X III

Basse  
danse

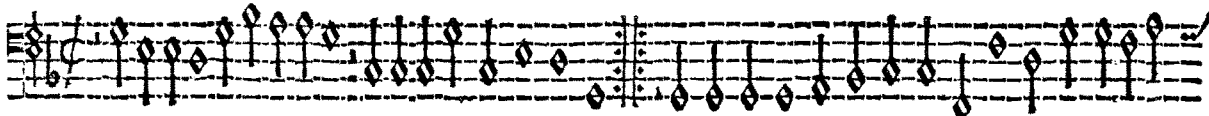


Braille

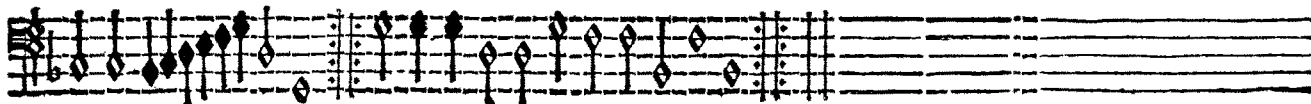
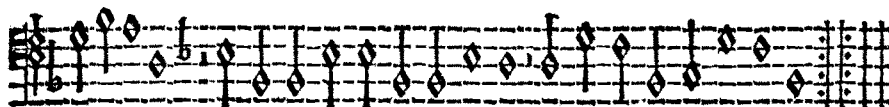


BASSVS

Basse  
danse



Braille

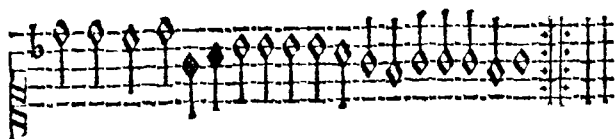


SVPERIVS

Brancie

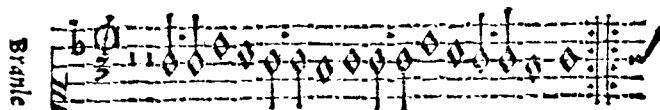


A musical staff for Soprano (Brancie) in G major, 4/4 time. It begins with a treble clef and a key signature of one sharp (F#). The melody consists of quarter and eighth notes, with some beamed eighth notes. The staff ends with a double bar line and repeat dots.



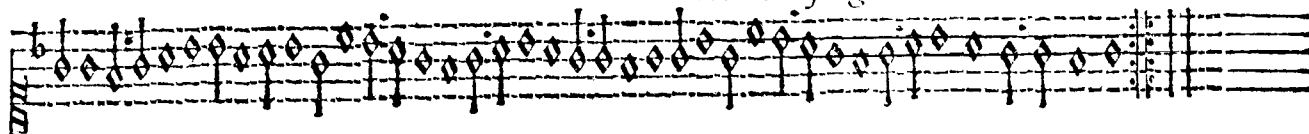
A musical staff for Soprano (Brancie) in G major, 4/4 time. It continues the melody from the first system. The staff ends with a double bar line and repeat dots.

Brancie



A musical staff for Soprano (Brancie) in G major, 4/4 time. It continues the melody from the previous systems. The staff ends with a double bar line and repeat dots.

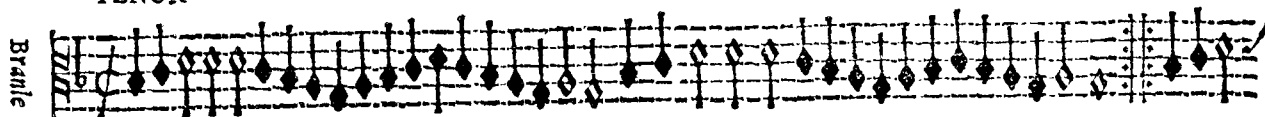
*Mari ie songeis lautre iour*



A musical staff for Soprano (Brancie) in G major, 4/4 time. It continues the melody from the previous systems. The staff ends with a double bar line and repeat dots.

TENOR

Brancie

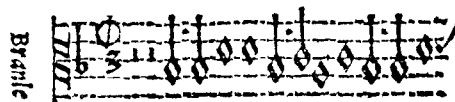


A musical staff for Tenor (Brancie) in G major, 4/4 time. It begins with a treble clef and a key signature of one sharp (F#). The melody consists of quarter and eighth notes, with some beamed eighth notes. The staff ends with a double bar line and repeat dots.



A musical staff for Tenor (Brancie) in G major, 4/4 time. It continues the melody from the first system. The staff ends with a double bar line and repeat dots.

Brancie



A musical staff for Tenor (Brancie) in G major, 4/4 time. It continues the melody from the previous systems. The staff ends with a double bar line and repeat dots.



A musical staff for Tenor (Brancie) in G major, 4/4 time. It continues the melody from the previous systems. The staff ends with a double bar line and repeat dots.

CONTRATENOR

Fo XIII

Braille

Musical notation for the Contratenor part, first system. It consists of a single staff with a treble clef and a key signature of one flat. The music is written in a rhythmic style with many eighth notes and rests. A Braille label is positioned to the left of the staff.

Musical notation for the Contratenor part, second system. It consists of two staves. The left staff continues the melody from the first system, and the right staff contains a second voice part. A Braille label is positioned between the two staves.

Musical notation for the Contratenor part, third system. It consists of a single staff with a treble clef and a key signature of one flat. The music continues with a similar rhythmic pattern. A Braille label is positioned to the left of the staff.

BASSVS

Braille

Musical notation for the Bassus part, first system. It consists of a single staff with a bass clef and a key signature of one flat. The music is written in a rhythmic style with many eighth notes and rests. A Braille label is positioned to the left of the staff.

Musical notation for the Bassus part, second system. It consists of two staves. The left staff continues the melody from the first system, and the right staff contains a second voice part. A Braille label is positioned between the two staves.

Musical notation for the Bassus part, third system. It consists of a single staff with a bass clef and a key signature of one flat. The music continues with a similar rhythmic pattern. A Braille label is positioned to the left of the staff.

SVPERIVS

Branle

The first staff of the SUPERIVS section contains musical notation for a single voice part. It begins with a treble clef, a common time signature (C), and a key signature of one flat (B-flat). The notation consists of a series of eighth and sixteenth notes, with stems pointing upwards. The staff concludes with a double bar line and a repeat sign.

The second staff of the SUPERIVS section continues the musical notation. It features a treble clef, a common time signature, and a key signature of one flat. The notes are primarily eighth and sixteenth notes with upward-pointing stems. The staff ends with a double bar line and a repeat sign.

Branle

The third staff of the SUPERIVS section continues the musical notation. It features a treble clef, a common time signature, and a key signature of one flat. The notes are primarily eighth and sixteenth notes with upward-pointing stems. The staff ends with a double bar line and a repeat sign.

The fourth staff of the SUPERIVS section continues the musical notation. It features a treble clef, a common time signature, and a key signature of one flat. The notes are primarily eighth and sixteenth notes with upward-pointing stems. The staff ends with a double bar line and a repeat sign.

Two empty musical staves, consisting of five lines each, positioned to the right of the fourth staff of the SUPERIVS section.

TENOR

Branle

The first staff of the TENOR section contains musical notation for a single voice part. It begins with a treble clef, a common time signature (C), and a key signature of one flat (B-flat). The notation consists of a series of eighth and sixteenth notes, with stems pointing upwards. The staff concludes with a double bar line and a repeat sign.

The second staff of the TENOR section continues the musical notation. It features a treble clef, a common time signature, and a key signature of one flat. The notes are primarily eighth and sixteenth notes with upward-pointing stems. The staff ends with a double bar line and a repeat sign.

Branle

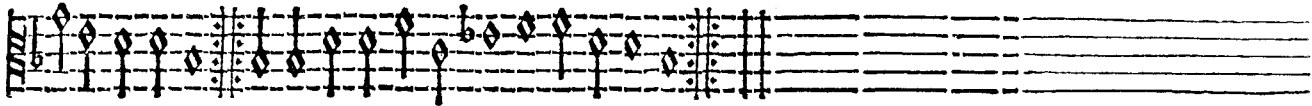
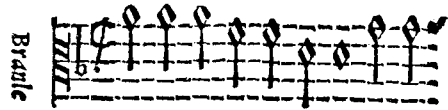
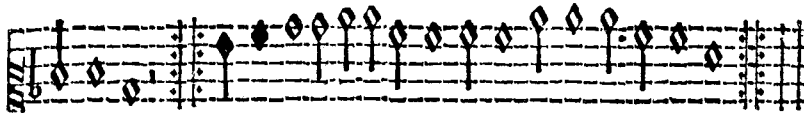
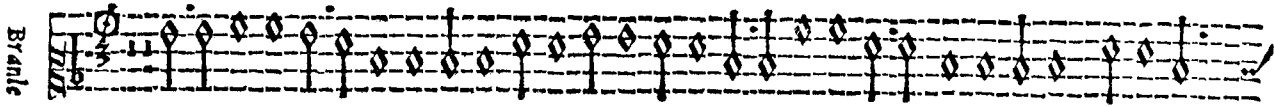
The third staff of the TENOR section continues the musical notation. It features a treble clef, a common time signature, and a key signature of one flat. The notes are primarily eighth and sixteenth notes with upward-pointing stems. The staff ends with a double bar line and a repeat sign.

The fourth staff of the TENOR section continues the musical notation. It features a treble clef, a common time signature, and a key signature of one flat. The notes are primarily eighth and sixteenth notes with upward-pointing stems. The staff ends with a double bar line and a repeat sign.

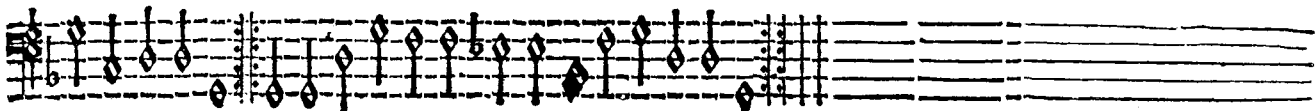
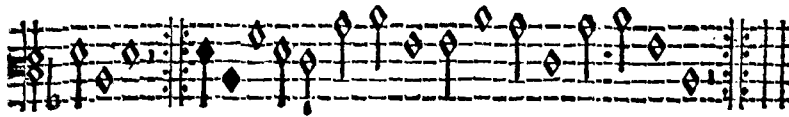
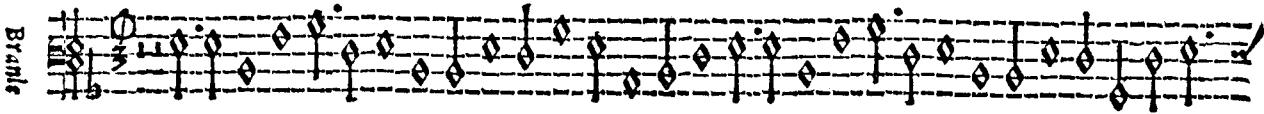
Two empty musical staves, consisting of five lines each, positioned to the right of the fourth staff of the TENOR section.

CONTRATENOR

Fo. XV



BASSVS.



SVPERIVS

Braille

Braille

Braille

The Soprano part is written in three systems. The first system has one staff with a treble clef and a common time signature. The second system has two staves, with the first staff continuing the melody and the second staff providing a bass line. The third system has one staff with a treble clef and a common time signature, continuing the melody.

TENOR

Braille

Braille

Braille

The Tenor part is written in three systems. The first system has one staff with a treble clef and a common time signature. The second system has two staves, with the first staff continuing the melody and the second staff providing a bass line. The third system has one staff with a treble clef and a common time signature, continuing the melody.

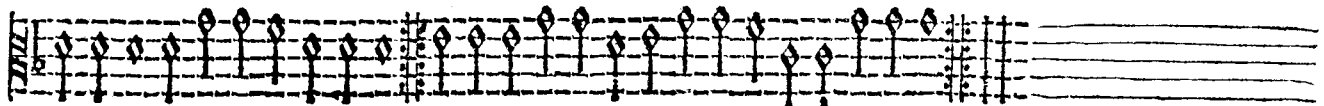
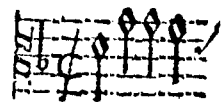
CONTRATENOR

Fº XVI

Branle

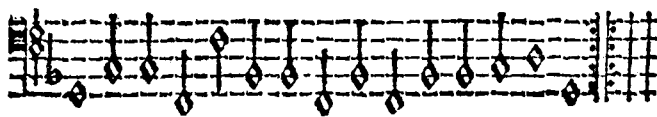


Branle

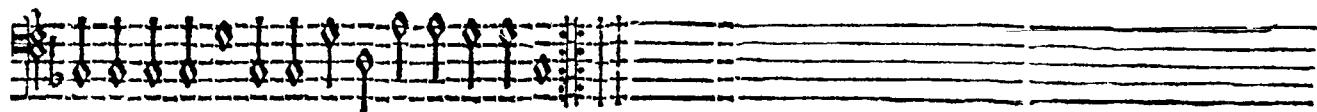


BASSVS

Branle



Branle



SVPERIVS

Branic

A musical staff for the Soprano part, labeled 'SVPERIVS'. It begins with a treble clef and a key signature of one flat. The staff contains a series of diamond-shaped notes, likely representing a specific rhythmic or melodic pattern. The notes are arranged in a sequence that moves across the staff, with some notes beamed together. The staff ends with a double bar line and a repeat sign.

A musical staff for the Soprano part, continuing the sequence from the first system. It features the same diamond-shaped notes and rhythmic pattern, ending with a double bar line and a repeat sign.

Branic

A musical staff for the Soprano part, continuing the sequence. It features the same diamond-shaped notes and rhythmic pattern, ending with a double bar line and a repeat sign.

A musical staff for the Tenor part, labeled 'TENOR'. It begins with a treble clef and a key signature of one flat. The staff contains a series of diamond-shaped notes, similar to the Soprano part but with a different melodic contour. The staff ends with a double bar line and a repeat sign.

TENOR

Branic

A musical staff for the Tenor part, continuing the sequence from the first system. It features the same diamond-shaped notes and rhythmic pattern, ending with a double bar line and a repeat sign.

A musical staff for the Tenor part, continuing the sequence. It features the same diamond-shaped notes and rhythmic pattern, ending with a double bar line and a repeat sign.

Branic

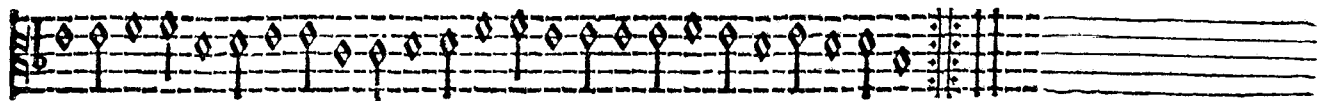
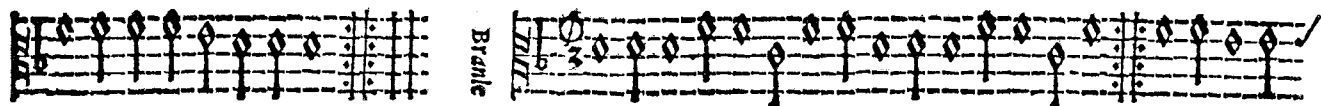
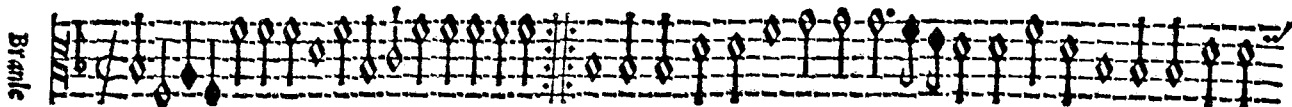
A musical staff for the Tenor part, continuing the sequence. It features the same diamond-shaped notes and rhythmic pattern, ending with a double bar line and a repeat sign.

A musical staff for the Tenor part, continuing the sequence. It features the same diamond-shaped notes and rhythmic pattern, ending with a double bar line and a repeat sign.

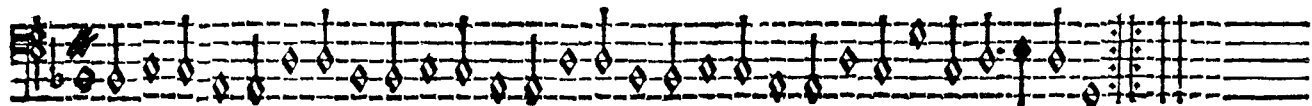
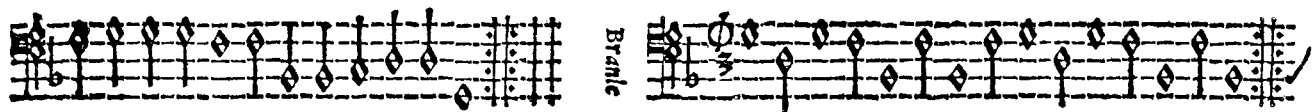
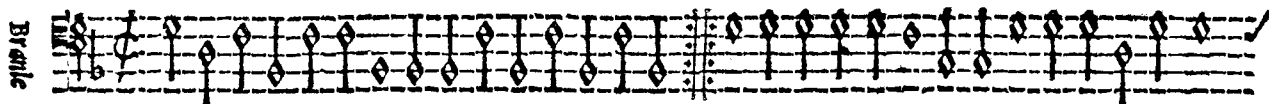


CONTRATENOR

Fo. XVII



BASSVS



SVPERIVS

Basse  
dance

Musical notation for Basses (dance) part of the SUPERIVS section. It consists of a single staff with a treble clef and a key signature of one flat. The music features a series of eighth and sixteenth notes, with some rests and a final cadence.

*Au pres de nous*

Musical notation for Basses (dance) part of the "Au pres de nous" section. It consists of a single staff with a treble clef and a key signature of one flat. The music features a series of eighth and sixteenth notes, with some rests and a final cadence.

Musical notation for Basses (dance) part of the "Au pres de nous" section. It consists of a single staff with a treble clef and a key signature of one flat. The music features a series of eighth and sixteenth notes, with some rests and a final cadence.

TENOR

Basse  
dance

Musical notation for Tenor part of the SUPERIVS section. It consists of a single staff with a treble clef and a key signature of one flat. The music features a series of eighth and sixteenth notes, with some rests and a final cadence.

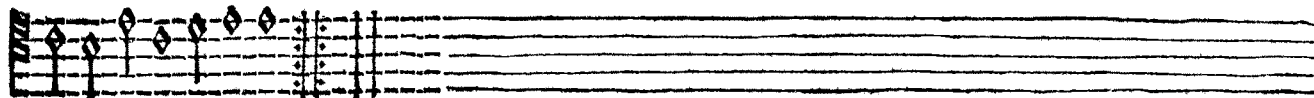
Musical notation for Tenor part of the "Au pres de nous" section. It consists of a single staff with a treble clef and a key signature of one flat. The music features a series of eighth and sixteenth notes, with some rests and a final cadence.

Musical notation for Tenor part of the "Au pres de nous" section. It consists of a single staff with a treble clef and a key signature of one flat. The music features a series of eighth and sixteenth notes, with some rests and a final cadence.

CONTRATENOR

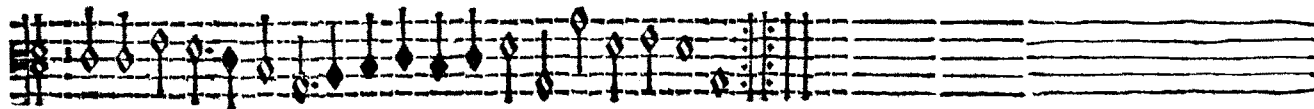
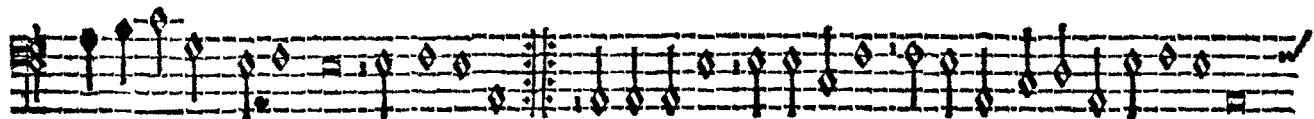
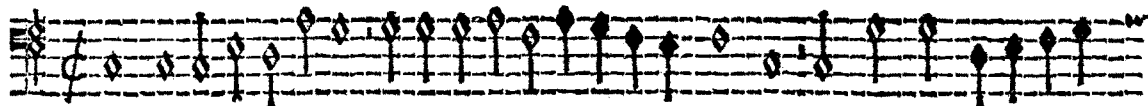
10 XV III

Basse  
danse



BASSVS

Basse  
danse



SVPERIVS

TORDION

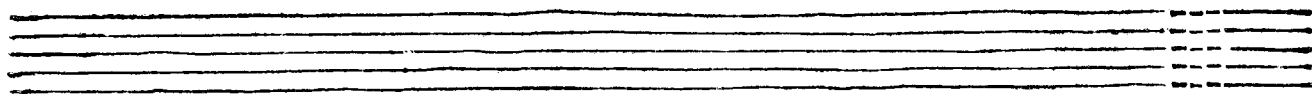
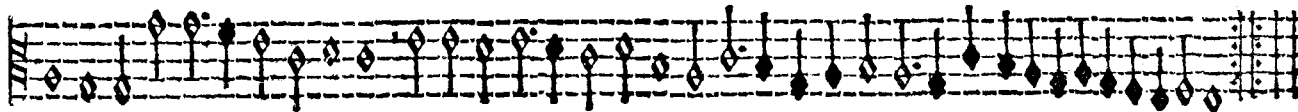


*Cest grand plaisir*



TENOR

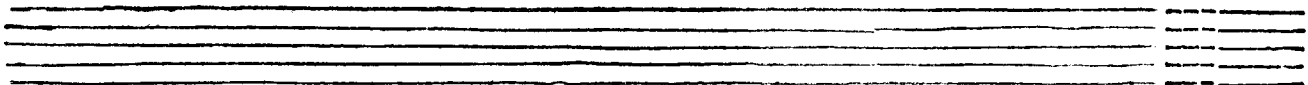
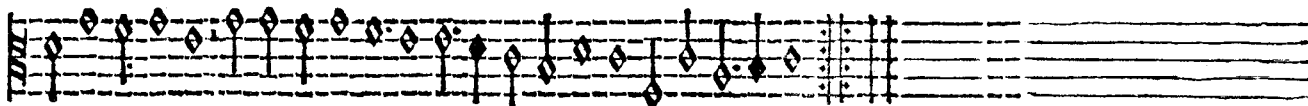
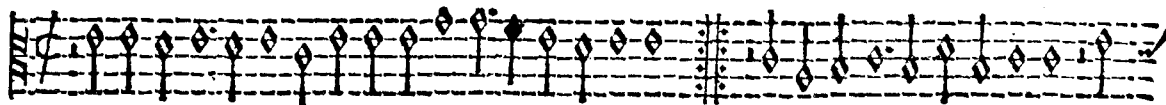
TORDION



CONTRATENOR

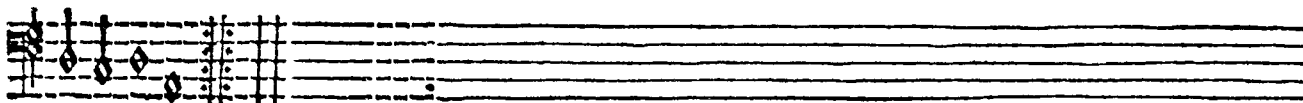
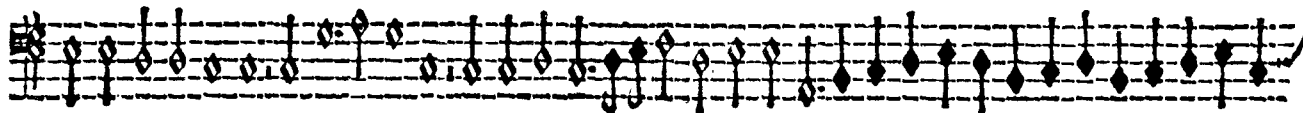
Fo. XIX

Tonרון



BASSVS.

Tonרון

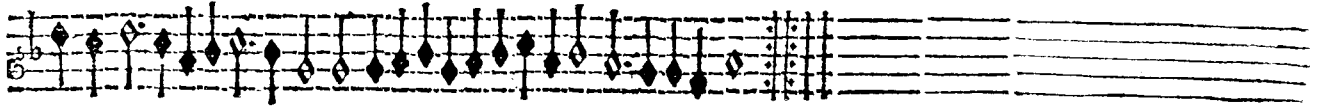


SVPERIVS

TONITION

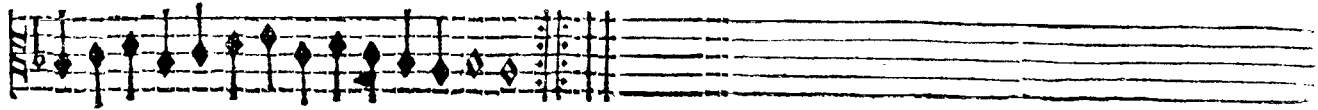
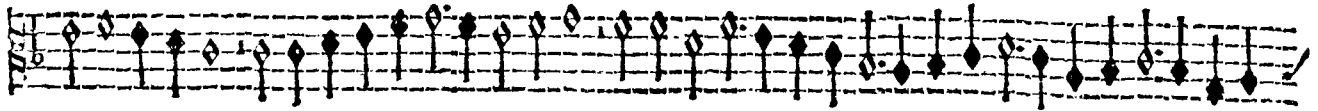


*Vous aurez tout ce qui est myen*



TENOR

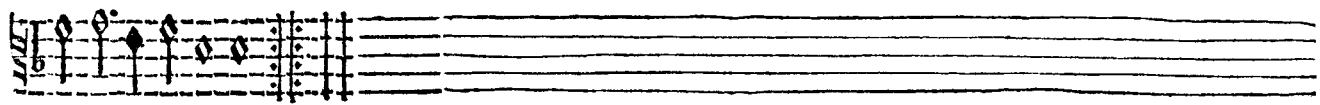
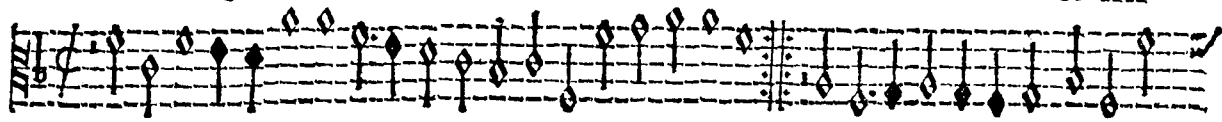
TONITION



CONTRATENOR

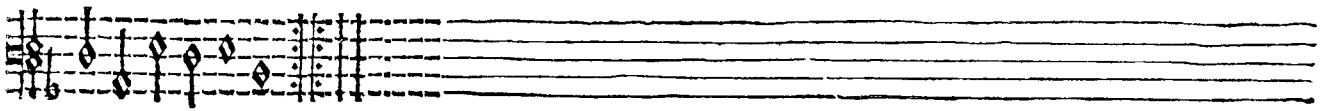
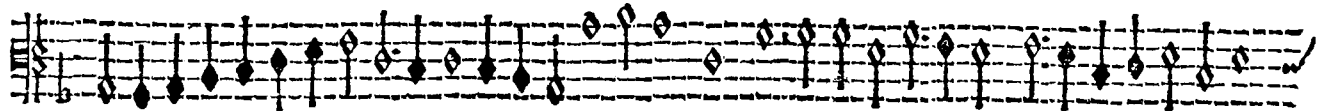
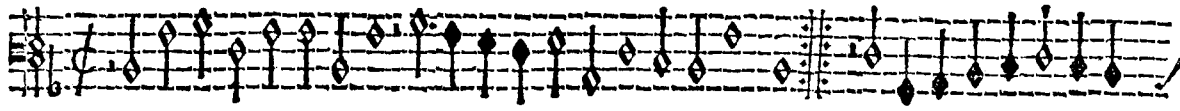
Fo XX

Tourdion



BASSVS

Tourdion



SVPERIVS

Bass  
dance

Musical staff for Bass part of the SVPERIVS section. The staff is labeled 'Bass' and 'dance'. It contains a single line of music with a treble clef, a key signature of one flat (B-flat), and a 9/8 time signature. The music consists of a sequence of eighth and sixteenth notes, ending with a fermata and a repeat sign.

Musical staff for Bass part of the SVPERIVS section. It contains a single line of music with a treble clef, a key signature of one flat, and a 9/8 time signature. The music consists of a sequence of eighth and sixteenth notes, ending with a fermata and a repeat sign.

Musical staff for Bass part of the SVPERIVS section. It contains a single line of music with a treble clef, a key signature of one flat, and a 9/8 time signature. The music consists of a sequence of eighth and sixteenth notes, ending with a fermata and a repeat sign.

TENOR

Bass  
dance

Musical staff for Tenor part of the SVPERIVS section. The staff is labeled 'Bass' and 'dance'. It contains a single line of music with a treble clef, a key signature of one flat, and a 9/8 time signature. The music consists of a sequence of eighth and sixteenth notes, ending with a fermata and a repeat sign.

Musical staff for Tenor part of the SVPERIVS section. It contains a single line of music with a treble clef, a key signature of one flat, and a 9/8 time signature. The music consists of a sequence of eighth and sixteenth notes, ending with a fermata and a repeat sign.

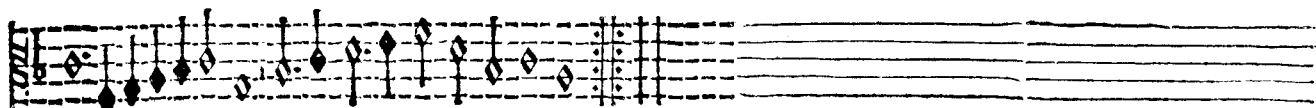
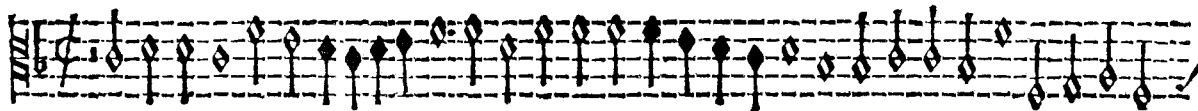
Musical staff for Tenor part of the SVPERIVS section. It contains a single line of music with a treble clef, a key signature of one flat, and a 9/8 time signature. The music consists of a sequence of eighth and sixteenth notes, ending with a fermata and a repeat sign.



CONTRATENOR

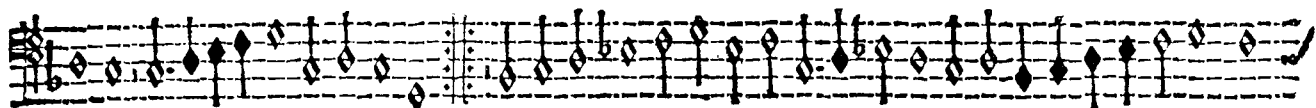
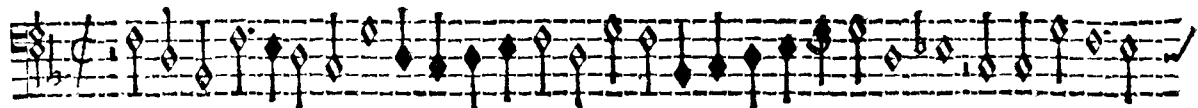
Fo. XXI

Basse  
danse



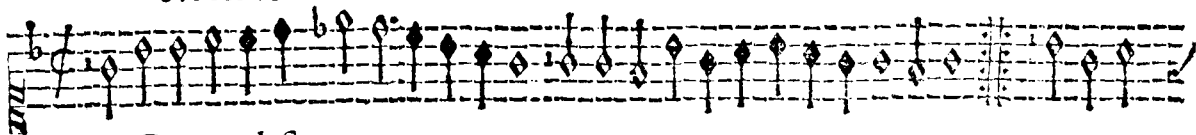
BASSVS

Basse  
danse

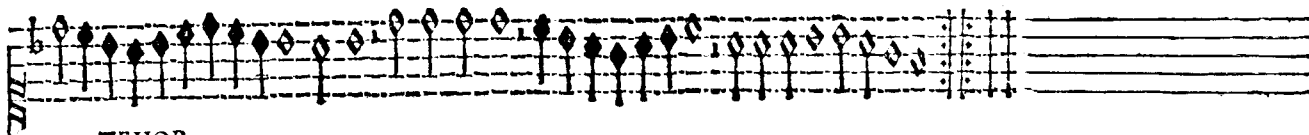


SVPERIVS

Basse  
basse

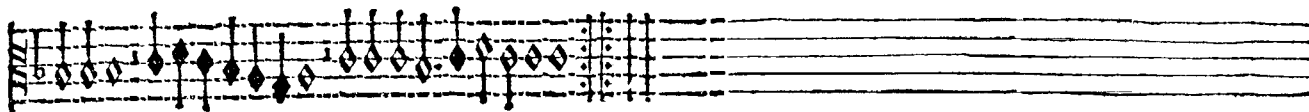
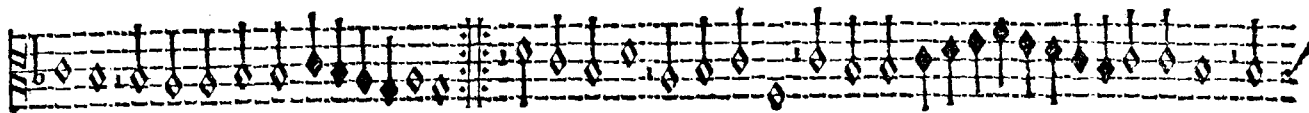
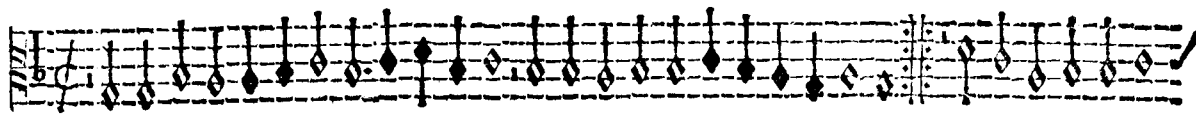


Content de sir



TENOR

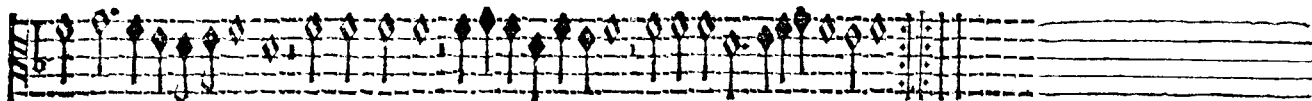
Basse  
basse



CONTRATENOR

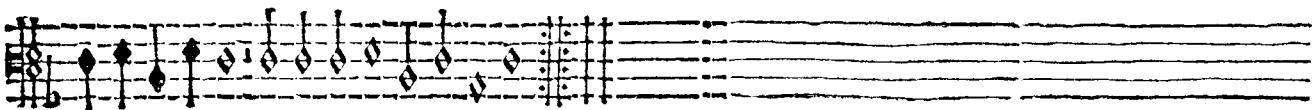
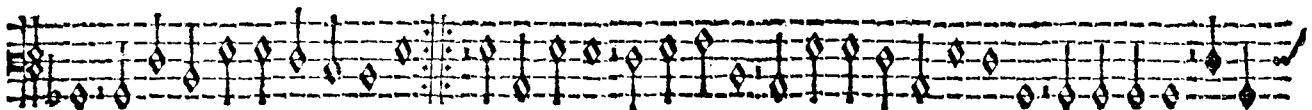
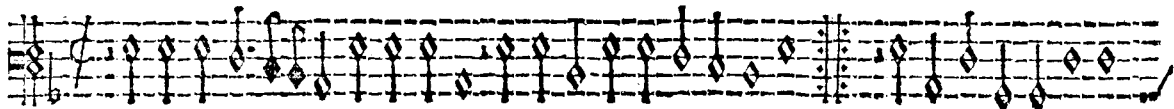
Fo XXII

Basse  
dancer



BASSVS

Basse  
dancer



SUPERIUS

Basse  
douce

Par fin despit

Musical notation for the Soprano part, consisting of two systems of a five-line staff. The first system begins with a treble clef, a key signature of one flat (B-flat), and a common time signature (C). The melody is written in a style characteristic of 17th-century French lute tablature, with diamond-shaped note heads and stems. The second system continues the melody and includes the lyrics 'Par fin despit' written above the notes. The piece concludes with a double bar line and a repeat sign.

TENOR

Basse  
douce

Musical notation for the Tenor part, consisting of three systems of a five-line staff. The first system begins with a treble clef, a key signature of one flat (B-flat), and a common time signature (C). The melody is written in a style characteristic of 17th-century French lute tablature, with diamond-shaped note heads and stems. The second and third systems continue the melody. The piece concludes with a double bar line and a repeat sign.

CONTRATENOR

Fo. XX III

Basse  
danse

Basse  
danse

SVPERIVS

Braille

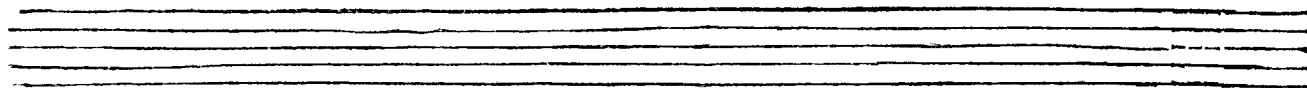
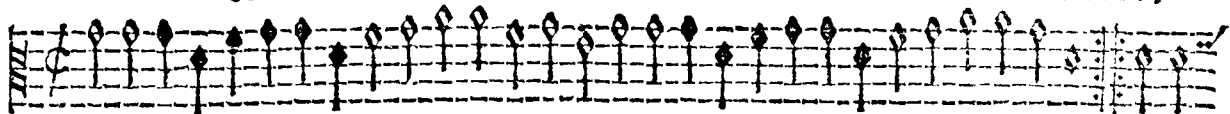
TENOR

Braille

CONTRATENOR

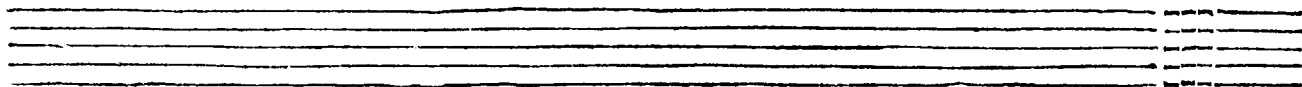
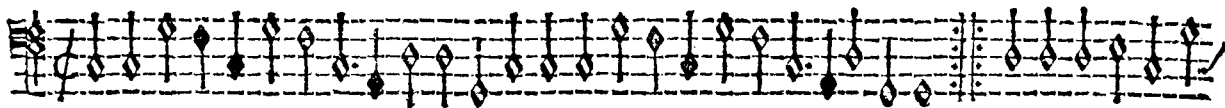
Es XXIII

Brancie



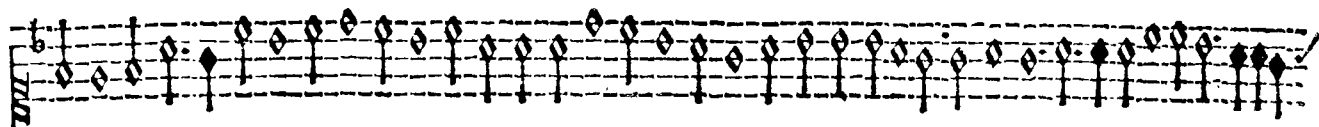
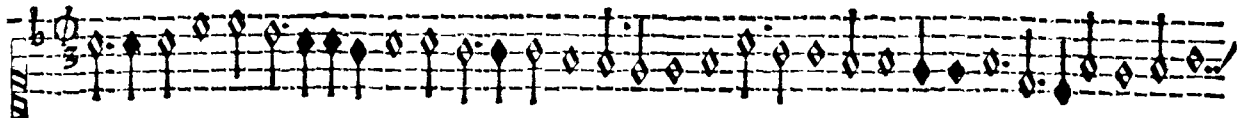
BASSVS

Brancie



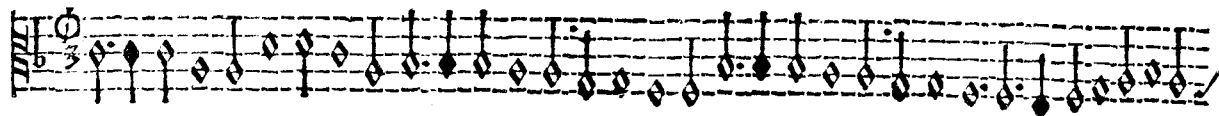
SUPERIUS

Branle  
847

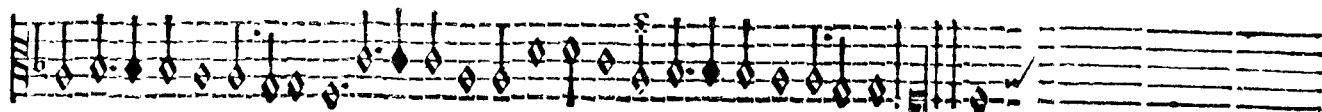
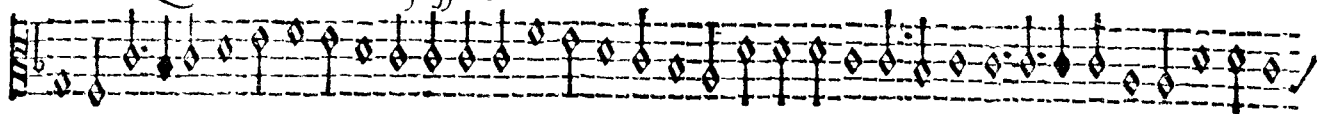


TENOR

Branle  
847



*Que ie chatouille ta fessette*

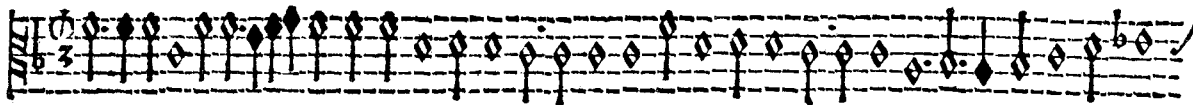




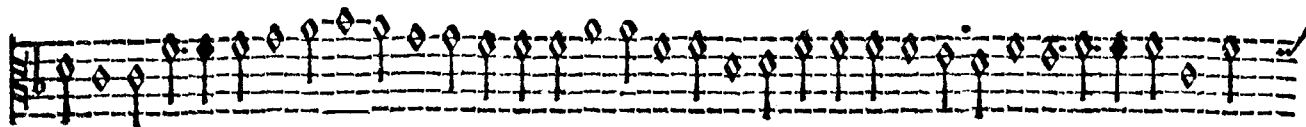
CONTRATENOR

Fo. XXV

849  
Braille

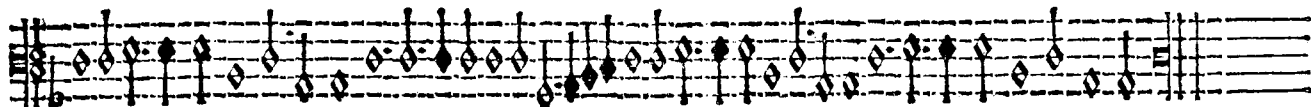
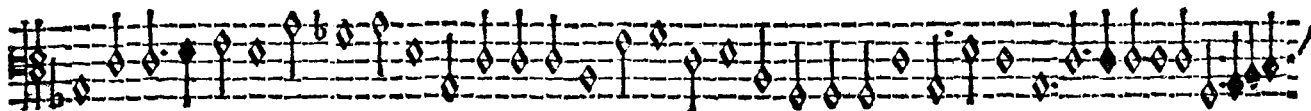
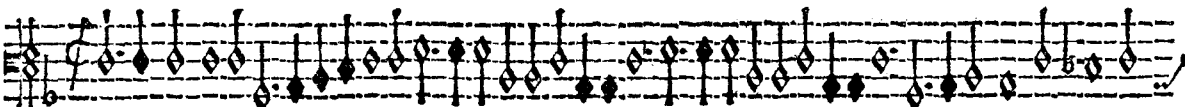


8



BASSVS

849  
Braille



SVPERIVS

Braille



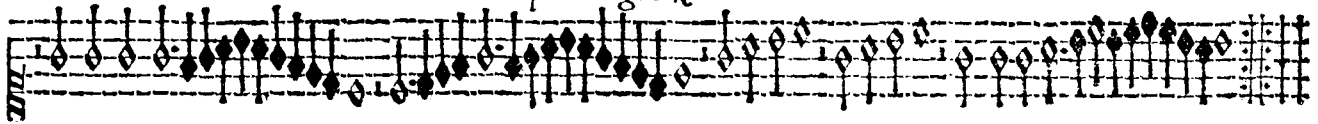
Musical notation for the Soprano part, labeled "SVPERIVS" and "Braille". It consists of a single staff with a treble clef and a key signature of one flat (B-flat). The melody is written in a series of eighth and sixteenth notes, with some rests. The piece concludes with a double bar line and a repeat sign.

Basse  
danse

Trop de regretz



Musical notation for the Bass and Dance parts. The Bass part is on a single staff with a bass clef and a key signature of one flat. The Dance part is on a single staff with a treble clef and a key signature of one flat. The title "Trop de regretz" is written between the staves. The notation includes various rhythmic values and rests, ending with a double bar line and a repeat sign.



Musical notation for the Tenor part, consisting of a single staff with a treble clef and a key signature of one flat. The melody is written in a series of eighth and sixteenth notes, with some rests. The piece concludes with a double bar line and a repeat sign.

TENOR

Braille

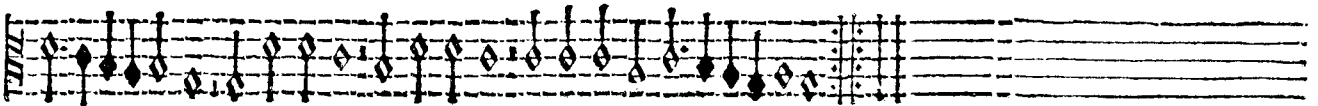


Musical notation for the Tenor part, labeled "TENOR" and "Braille". It consists of a single staff with a treble clef and a key signature of one flat. The melody is written in a series of eighth and sixteenth notes, with some rests. The piece concludes with a double bar line and a repeat sign.

Basse  
danse



Musical notation for the Bass and Dance parts. The Bass part is on a single staff with a bass clef and a key signature of one flat. The Dance part is on a single staff with a treble clef and a key signature of one flat. The notation includes various rhythmic values and rests, ending with a double bar line and a repeat sign.

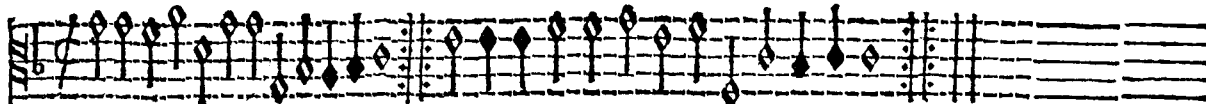


Musical notation for the Tenor part, consisting of a single staff with a treble clef and a key signature of one flat. The melody is written in a series of eighth and sixteenth notes, with some rests. The piece concludes with a double bar line and a repeat sign.

CONTRATENOR

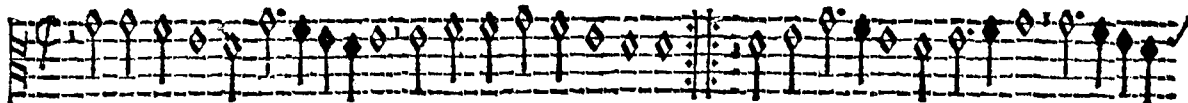
Fo XXVI

Braille

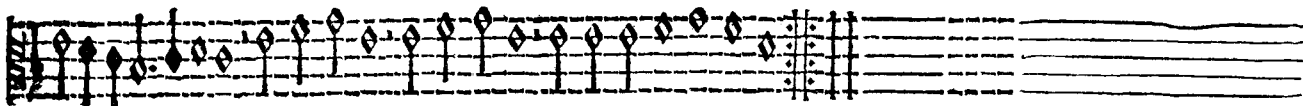


Musical notation for the Contratenor Braille part, consisting of a single staff with notes and rests.

Basse  
danse



Musical notation for the Contratenor Basses part, consisting of a single staff with notes and rests.



An empty musical staff with a treble clef and a key signature of one flat.

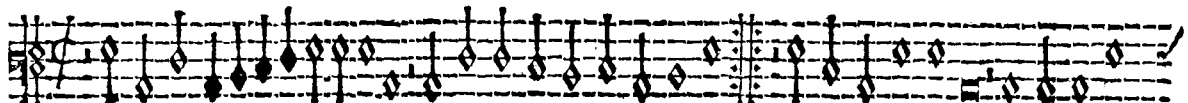
BASSVS.

Braille



Musical notation for the Bassus Braille part, consisting of a single staff with notes and rests.

Basse  
danse



Musical notation for the Bassus Basses part, consisting of a single staff with notes and rests.



An empty musical staff with a treble clef and a key signature of one flat.

SUPERIUS

Tourdion

The Soprano part is written on three staves. The first staff begins with a treble clef, a key signature of one flat (B-flat), and a common time signature (C). The music consists of a series of eighth and sixteenth notes, with some rests. The second staff continues the melodic line, and the third staff concludes it with a final cadence. The word 'Tourdion' is written vertically to the left of the first staff and to the right of the second staff.

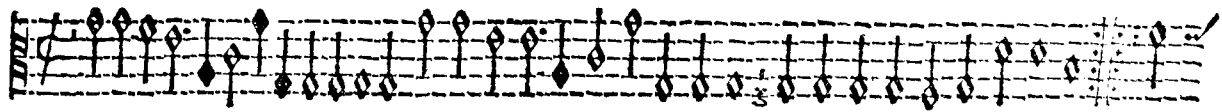
TENOR

Tourdion

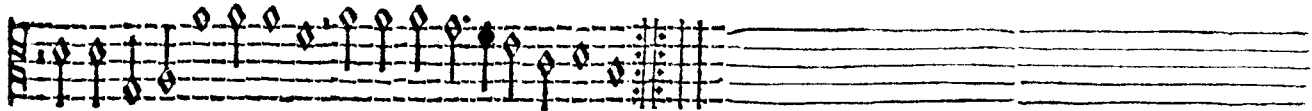
The Tenor part is written on three staves. The first staff begins with a treble clef, a key signature of one flat (B-flat), and a common time signature (C). The music consists of a series of eighth and sixteenth notes, with some rests. The second staff continues the melodic line, and the third staff concludes it with a final cadence. The word 'Tourdion' is written vertically to the left of the first staff and to the right of the second staff.

CONTRATENOR

Tourlion

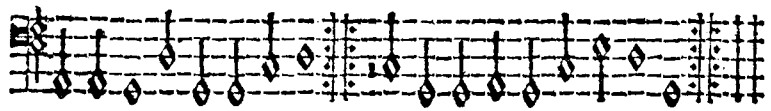


Tourlion

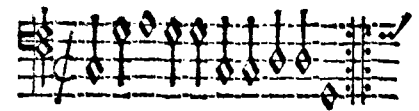


BASSVS

Tourlion



Tourlion



SVPERIVS

BRANLE

BRANLE  
849

TENOR

BRANLE

BRANLE  
849

CONTRATENOR

Fo XXV III

Braille

Braille 849

BASSVS

Braille

Braille 849

SVPERIVS

Musical notation for the Soprano part, labeled "SVPERIVS" and "Branle". The notation is written on a single staff with a treble clef and a common time signature. It consists of three lines of music. The first line starts with a treble clef and a common time signature. The second line starts with a treble clef and a common time signature. The third line starts with a treble clef and a common time signature. The music is written in a style that uses diamond-shaped notes and stems, characteristic of early printed music notation. The notes are connected by stems, and there are various accidentals and ornaments throughout the piece.

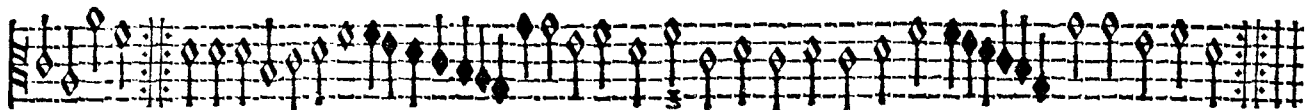
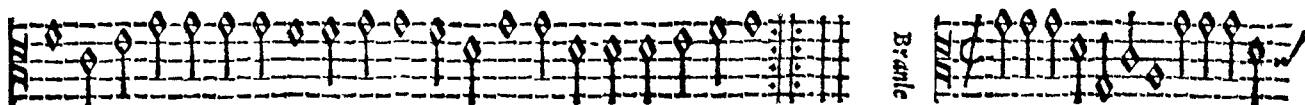
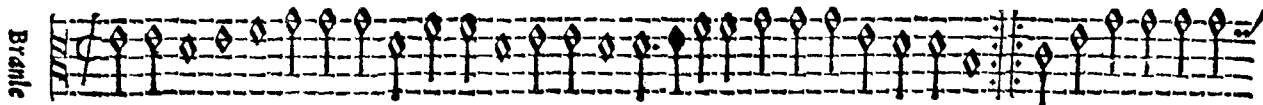
TENOR

Musical notation for the Tenor part, labeled "TENOR" and "Branle". The notation is written on a single staff with a treble clef and a common time signature. It consists of three lines of music. The first line starts with a treble clef and a common time signature. The second line starts with a treble clef and a common time signature. The third line starts with a treble clef and a common time signature. The music is written in a style that uses diamond-shaped notes and stems, characteristic of early printed music notation. The notes are connected by stems, and there are various accidentals and ornaments throughout the piece.

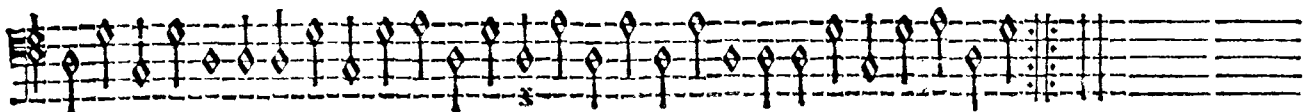
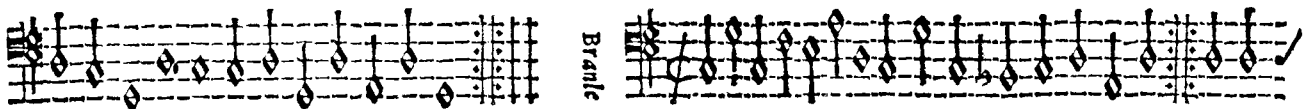
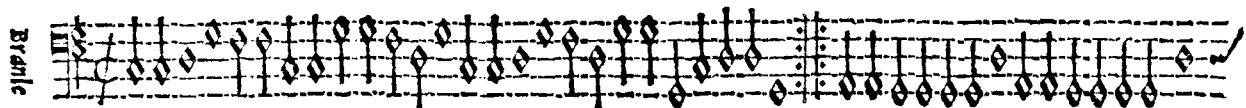


CONTRATENOR

Fo. XXIX



BASSVS



SVPERIVS

Psalms

Musical staff for Soprano part of Psalm 137, measures 1-10. The staff is in G-clef and 3/4 time. It begins with a treble clef and a '9' indicating the starting note. The melody consists of quarter and eighth notes, with some rests. The word 'Psalms' is written vertically to the left of the staff.

Musical staff for Soprano part of Psalm 137, measures 11-20. The staff continues the melody from the previous system, ending with a double bar line and repeat dots.

Psalms

Musical staff for Soprano part of Psalm 137, measures 21-30. The staff continues the melody, ending with a double bar line and repeat dots. The word 'Psalms' is written vertically to the left of the staff.

Musical staff for Soprano part of Psalm 137, measures 31-40. The staff continues the melody, ending with a double bar line and repeat dots.

TENOR

Psalms

Musical staff for Tenor part of Psalm 137, measures 1-10. The staff is in G-clef and 3/4 time. It begins with a treble clef and a '9' indicating the starting note. The melody consists of quarter and eighth notes, with some rests. The word 'Psalms' is written vertically to the left of the staff.

Musical staff for Tenor part of Psalm 137, measures 11-20. The staff continues the melody from the previous system, ending with a double bar line and repeat dots.

Psalms

Musical staff for Tenor part of Psalm 137, measures 21-30. The staff continues the melody, ending with a double bar line and repeat dots. The word 'Psalms' is written vertically to the left of the staff.

Musical staff for Tenor part of Psalm 137, measures 31-40. The staff continues the melody, ending with a double bar line and repeat dots.

CONTRATENOR

Fo XXX

*Piano*

Musical staff for Contratenor, first system. It begins with a treble clef, a key signature of one flat (B-flat), and a common time signature. The melody consists of quarter and eighth notes, with some notes beamed together. There are two bar lines in the system.

Musical staff for Contratenor, second system. It continues the melody from the first system. There are two bar lines in the system.

Musical staff for Contratenor, third system. It continues the melody from the second system. There are two bar lines in the system.

BASSVS.

*Piano*

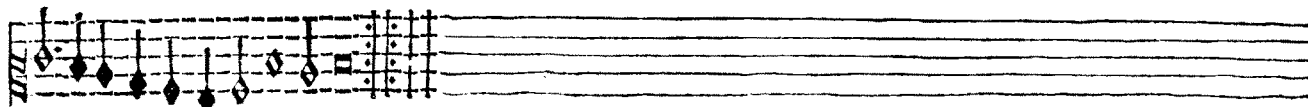
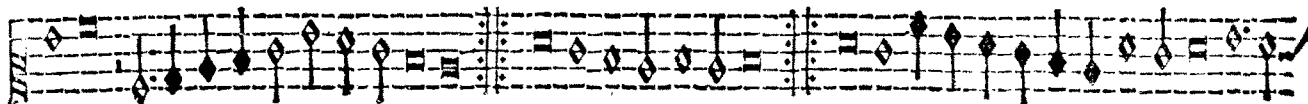
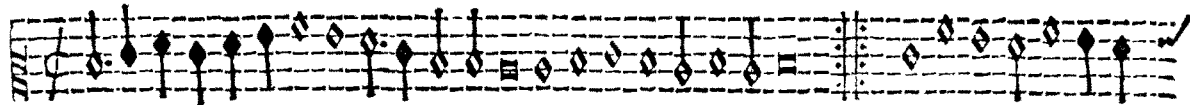
Musical staff for Bass, first system. It begins with a bass clef, a key signature of one flat (B-flat), and a common time signature. The melody consists of quarter and eighth notes, with some notes beamed together. There are two bar lines in the system.

Musical staff for Bass, second system. It continues the melody from the first system. There are two bar lines in the system.

Musical staff for Bass, third system. It continues the melody from the second system. There are two bar lines in the system.

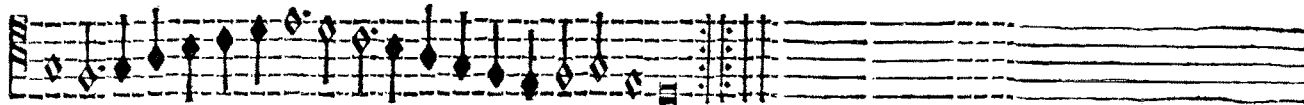
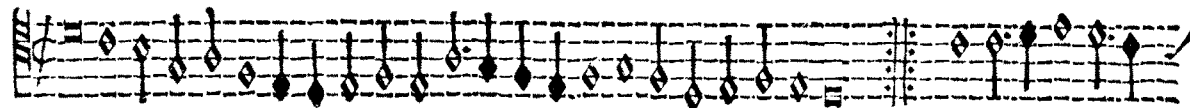
SVPERIVS

PARTITE



TENOR

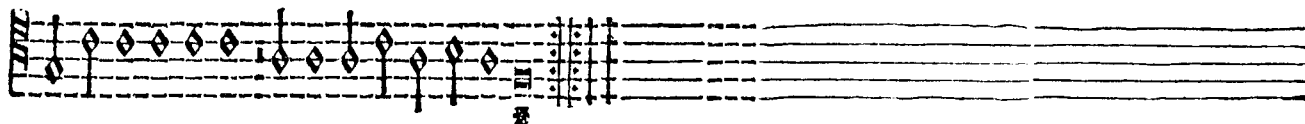
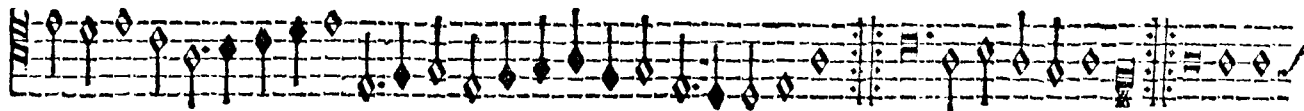
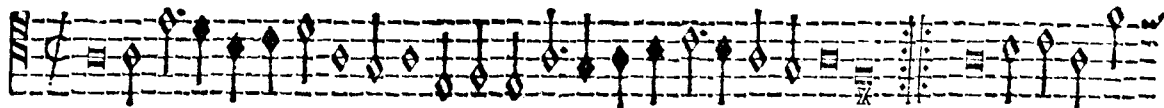
PARTITE



CONTRATENOR

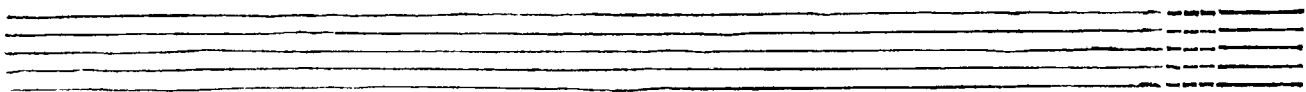
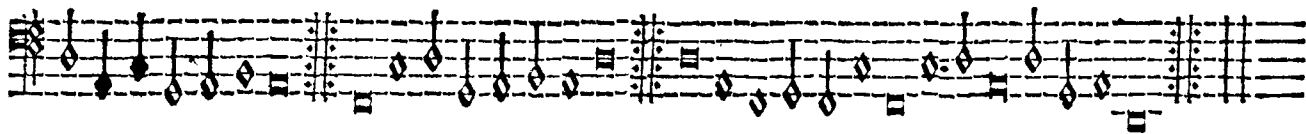
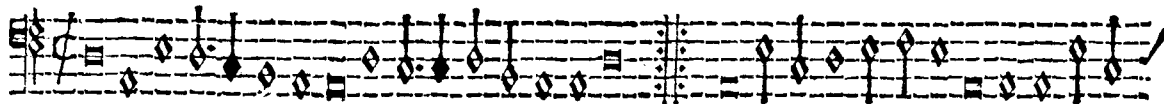
Fo. XXXI

PANDUS



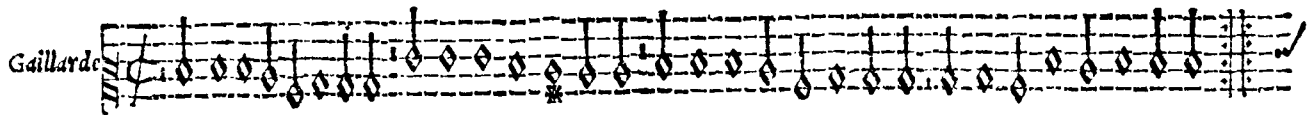
BASSVS

PANDUS

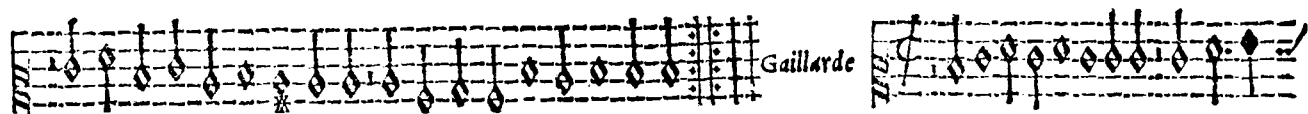


SVPERIVS

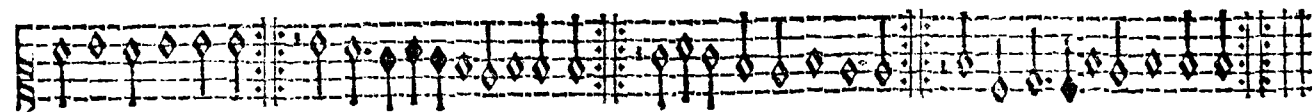
Gaillarde



A single musical staff for the Soprano part, labeled 'Gaillarde' on the left. It contains a series of notes, including quarter and eighth notes, with some accidentals. The staff ends with a double bar line and a repeat sign.



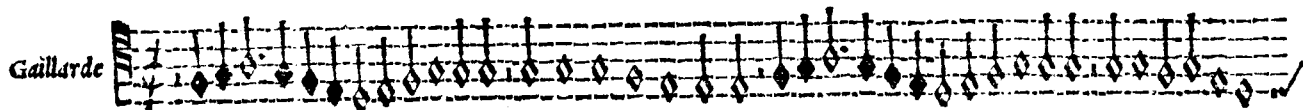
Two musical staves for the Soprano part. The first staff continues the melody from the first system. The second staff is labeled 'Gaillarde' on the right and contains a shorter melodic phrase.



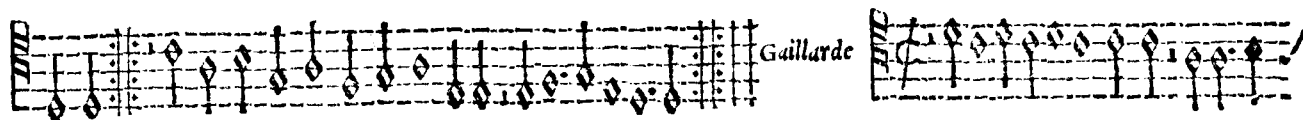
A single musical staff for the Soprano part, continuing the melody with various note values and rests.

TENOR

Gaillarde



A single musical staff for the Tenor part, labeled 'Gaillarde' on the left. It contains a series of notes, including quarter and eighth notes, with some accidentals. The staff ends with a double bar line and a repeat sign.



Two musical staves for the Tenor part. The first staff continues the melody from the first system. The second staff is labeled 'Gaillarde' on the right and contains a shorter melodic phrase.

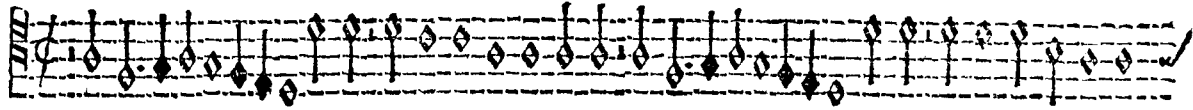


A single musical staff for the Tenor part, continuing the melody with various note values and rests.

CONTRATENOR

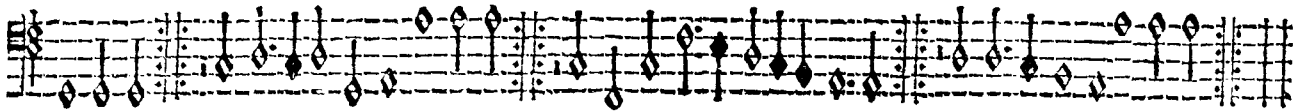
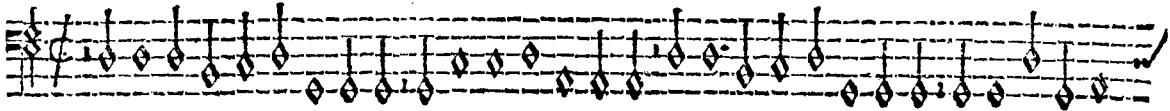
Op XXXII

Gaillarde



BASSUS

Gaillarde



SVPERIVS

Gaillarde

Contra tenor

Gaillarde

Tenor

Gaillarde

1. Bassus

Gaillarde

ij. Bassus

Gaillarde

The image shows a musical score for a piece titled 'SVPERIVS'. It consists of seven staves of music. The first staff is a Gaillarde in G major, 3/4 time, with a treble clef and a key signature of one sharp. The second staff is a vocal part for 'Contra tenor' in G major, 3/4 time, with a bass clef. The third staff is a Gaillarde in G major, 3/4 time, with a treble clef. The fourth staff is a vocal part for 'Tenor' in G major, 3/4 time, with a bass clef. The fifth staff is a Gaillarde in G major, 3/4 time, with a treble clef. The sixth staff is a vocal part for '1. Bassus' in G major, 3/4 time, with a bass clef. The seventh staff is a Gaillarde in G major, 3/4 time, with a treble clef. The eighth staff is a vocal part for 'ij. Bassus' in G major, 3/4 time, with a bass clef. The music is written in a style typical of 16th-century lute tablature, with rhythmic values indicated by stems and flags, and accidentals shown as natural signs or dots above notes.

Finis.