

Cello

Symphony #1 (1) in Cmajor

1st Movement(6'10")

Michel Rondeau
1972.

Marche (♩ = circa 100)

9 *f* 3 2

16 5 *f* pizz.

26 3 *f*

34 *mf*

40 *f*

46 *f*

52 *mf*

59 5

69

Symphony #1 (1) in Cmajor Cello

2
74



79



84



89



94



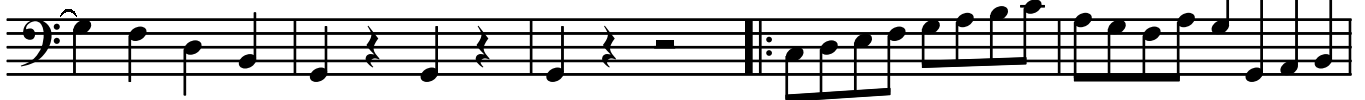
100



106



112



117



122



128



Symphony #1 (1) in Cmajor Cello

4

192

196

204

211

216

221

227

231

236

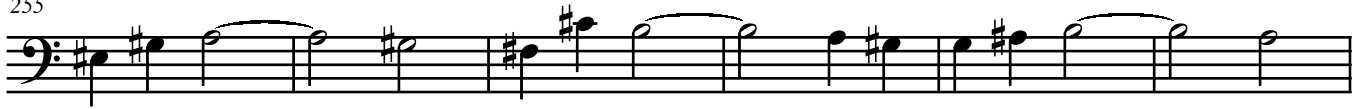
241

246

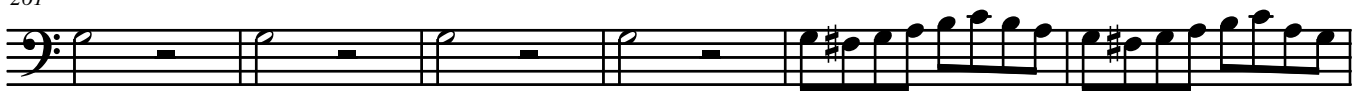
250



255



261



267



271



275



284



289



294



299



304

