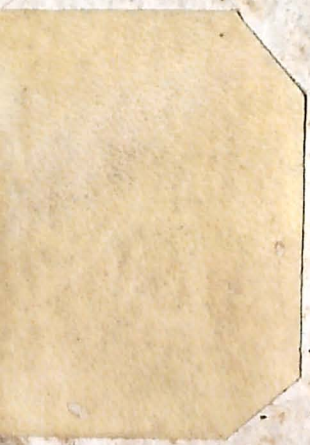


106/5



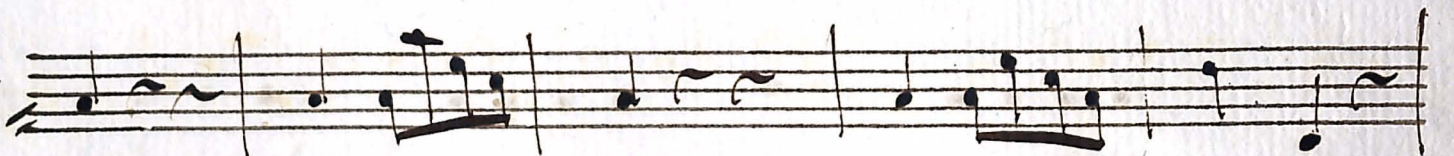
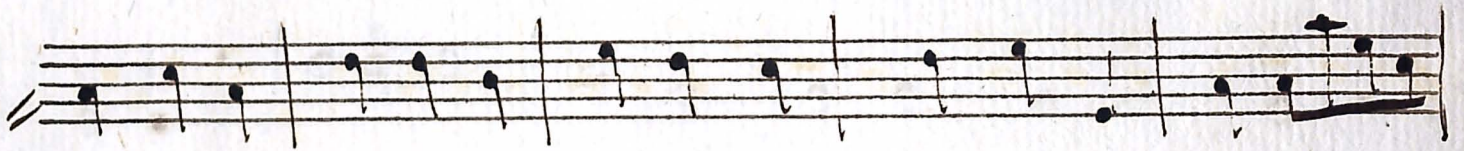
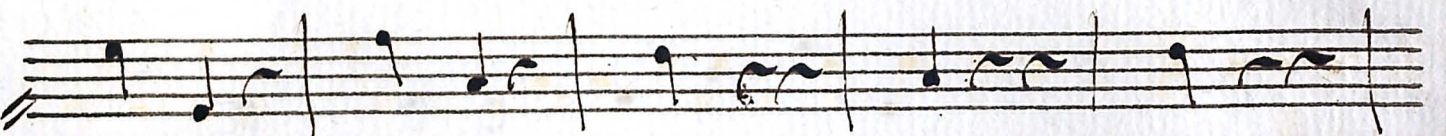
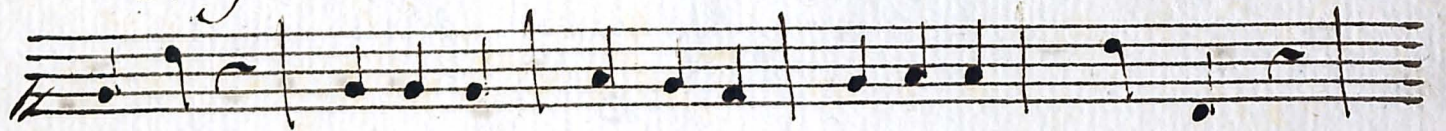
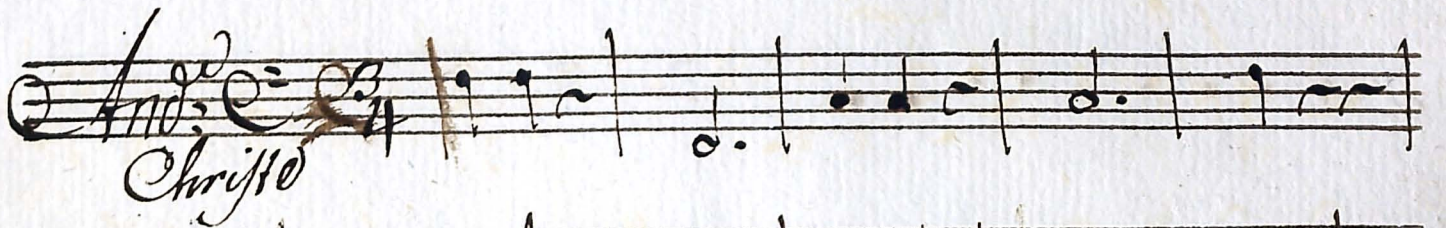
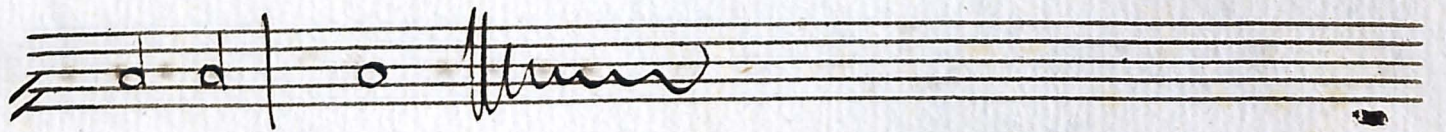
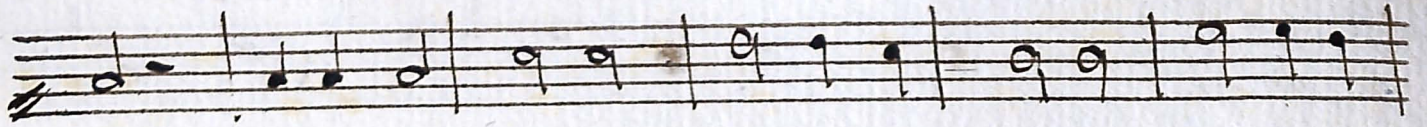
Contrabbasso



S-106/5

Largo *Tutti*
Lirico

Andante
Lirico



Handwritten musical notation on a single staff, featuring a series of notes with various rhythmic markings below them, including 3/5, 3, 3, 4/6, 1/4, 6, 3/5, 4/5, and 3/5.

Handwritten musical notation on a single staff, featuring a series of notes with a 3/5 marking at the end.

Handwritten musical notation on a single staff, featuring a series of notes with rhythmic markings below them, including 4/6, 1/4, 6, 3/5, 4/6, 3/5, 5/6, 3/5, 3/5, 4/5, and 3/5.

Handwritten musical notation on a single staff, featuring a series of notes with a 3/5 marking at the beginning and a double bar line with a flourish and the number 49.

Handwritten musical notation on a single staff, starting with the word *Adagio* in a large, decorative script. The notation includes notes with a *Tutti* marking above and rhythmic markings below, including 3/5, 6/8, 7/8, 3/5, and 6/8.

Handwritten musical notation on a single staff, featuring notes with a 7/8 marking and a 3/5 marking, followed by a double bar line and the word *Segue subito* written in a decorative script.

Handwritten musical notation on a single staff, starting with the word *Andante* in a large, decorative script. The notation includes notes with a *Tutti* marking above and rhythmic markings below, including 3/5, 4/6, 3/5, and 4/6.

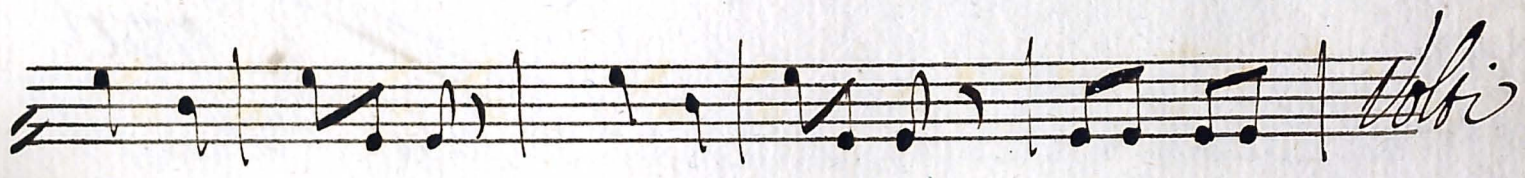
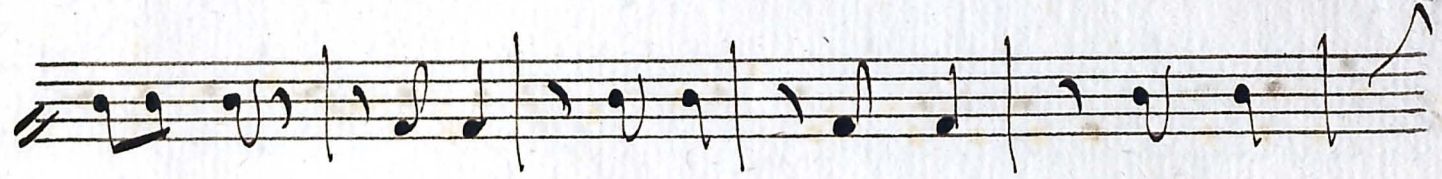
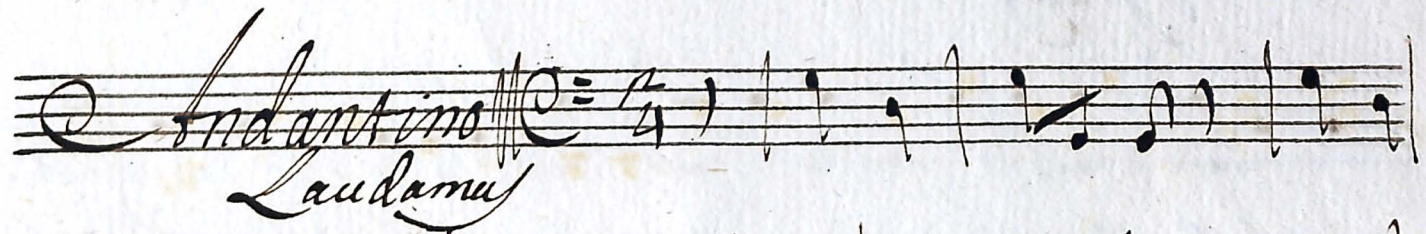
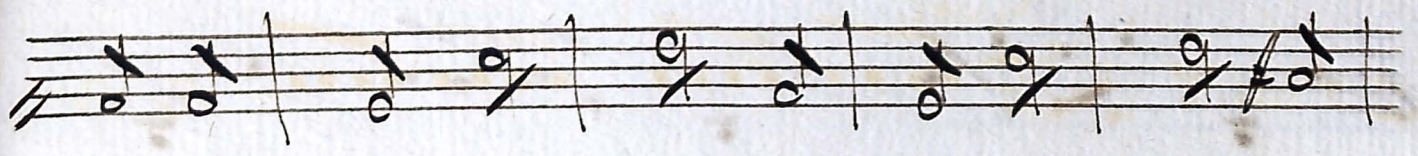
Handwritten musical notation on a single staff, featuring a series of notes with a 4/6 and 3/5 marking at the beginning.

Handwritten musical notation on a single staff, featuring a series of notes.

Handwritten musical notation on a single staff, featuring a series of notes.

Gloria

Allegro *Tutti*



Handwritten musical notation on three staves. The first staff begins with a treble clef and a key signature of one sharp (F#). The notation consists of eighth and sixteenth notes. The second and third staves continue the melodic line with similar rhythmic values.

Handwritten musical notation on seven staves. The first staff is marked *Adagio* and *Gratias* in cursive. It features a treble clef, a key signature of one sharp (F#), and a 4/4 time signature. The notation includes various note values such as quarter, eighth, and sixteenth notes, along with rests and slurs. The subsequent staves continue the piece with similar rhythmic patterns.

Four empty musical staves. The word *Segue* is written in cursive at the end of the second staff from the bottom, indicating the end of the piece.

And: Con Moto $\text{C} = \frac{1}{4}$
Domine Deus

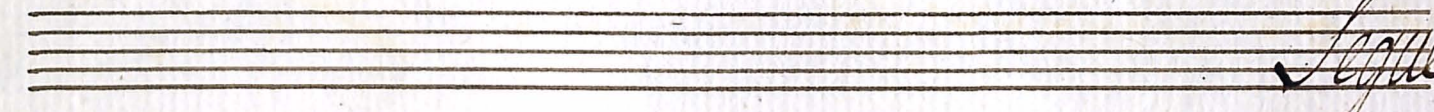
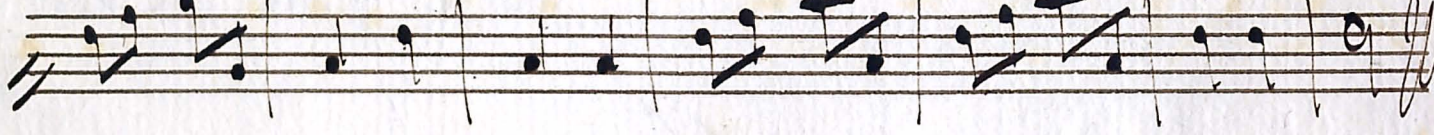
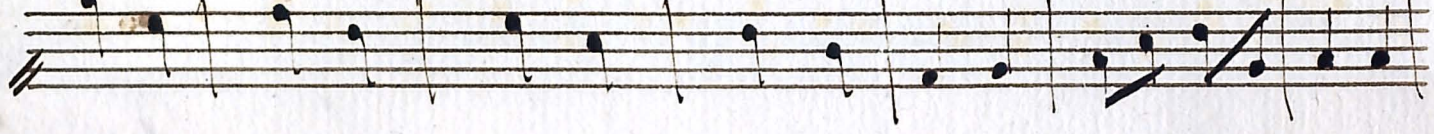
A handwritten musical score for the piece "Domine Deus". The score is written on ten staves. The first staff contains the tempo and meter markings: "And: Con Moto" and "C = 1/4". The title "Domine Deus" is written in cursive below the first staff. The music is written in a single melodic line, likely for a vocal or instrumental part. The notation includes various note values (quarter, eighth, and sixteenth notes), rests, and accidentals (sharps and naturals). The piece concludes with a double bar line and a decorative flourish.

Tutti

Largo
qui tollis

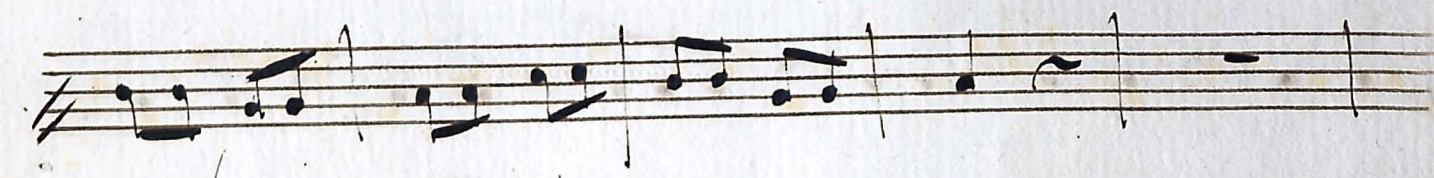
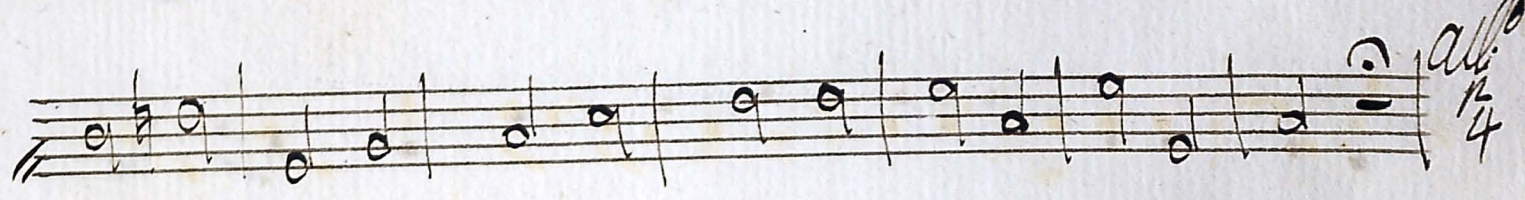
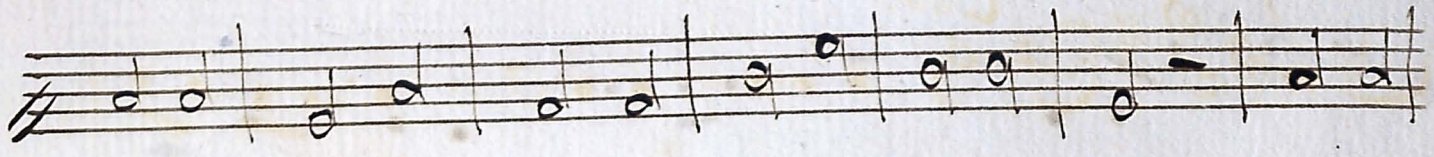
A handwritten musical score consisting of ten staves. The notation is in a single system, likely for a vocal line. The first staff begins with a treble clef, a common time signature (C), and a 4/4 time signature. The tempo is marked 'Largo' and the dynamics 'Tutti'. The lyrics 'qui tollis' are written below the first staff. The music features a series of eighth and sixteenth notes, with some rests and dynamic markings. The paper shows signs of age, including yellowing and foxing.

Andantino $\text{C} = \text{b}$ $\frac{3}{4}$



Segue

Adagio *Tutti*
Sancto

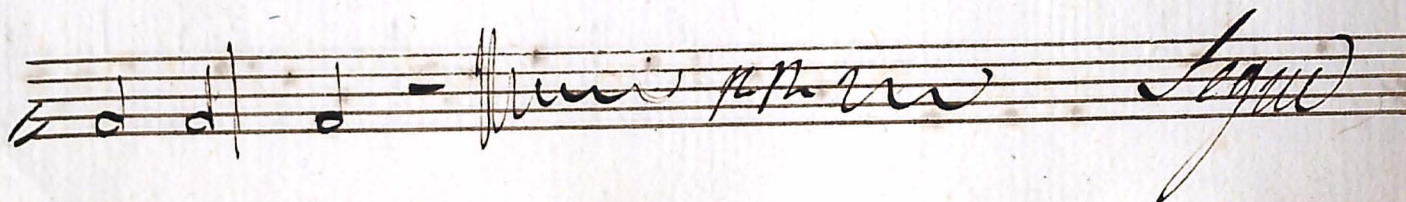
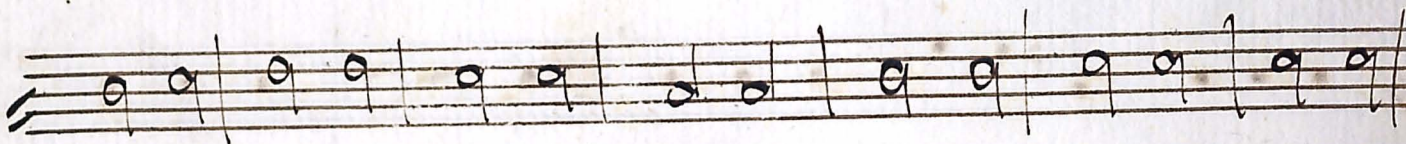
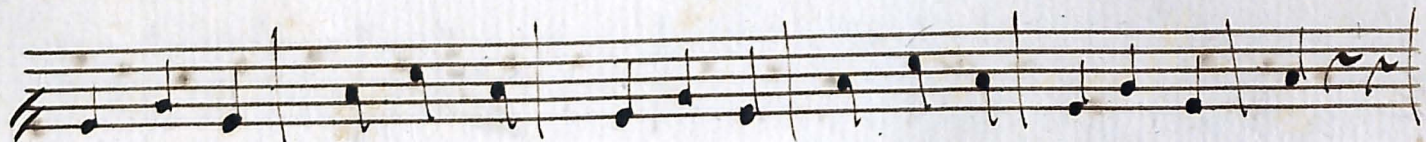


Segue il Credo

Credo

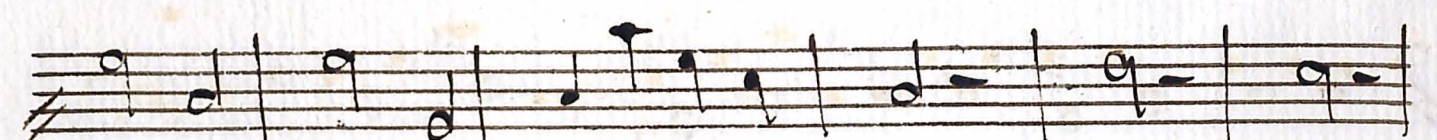
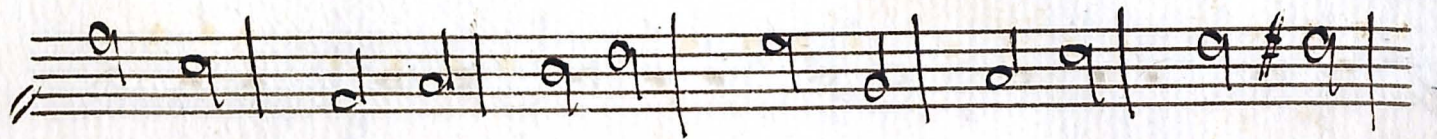
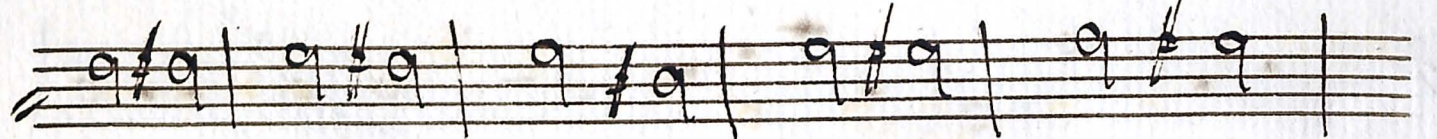
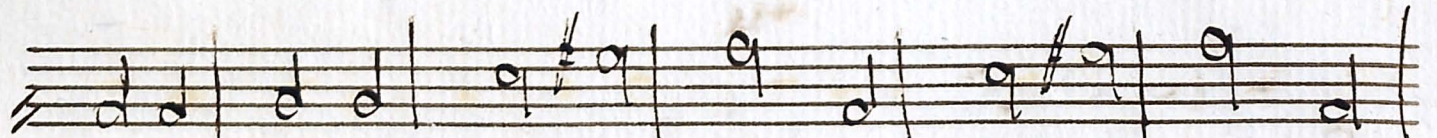
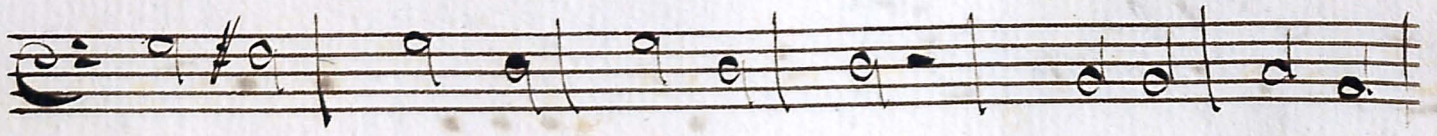
And^{te} *Tutti*

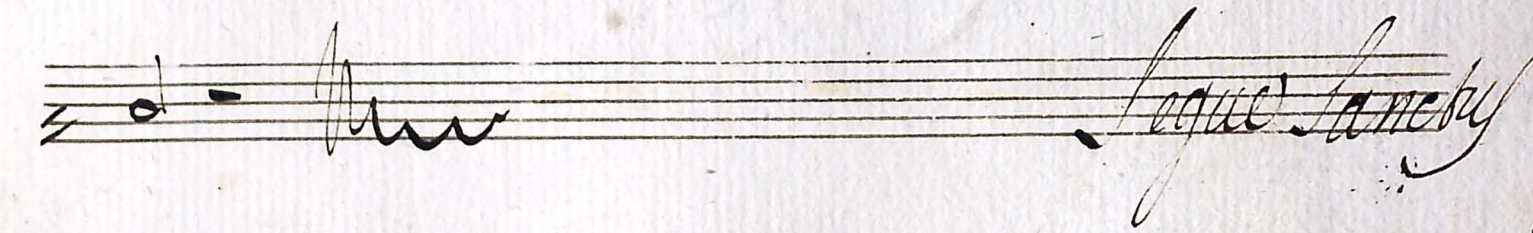
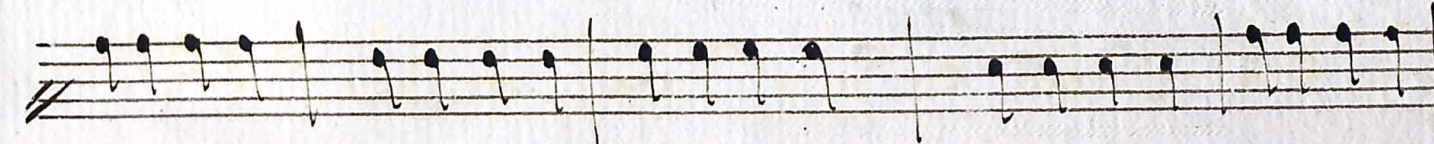
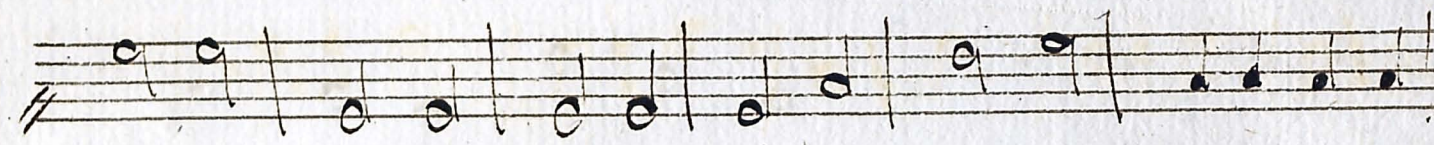
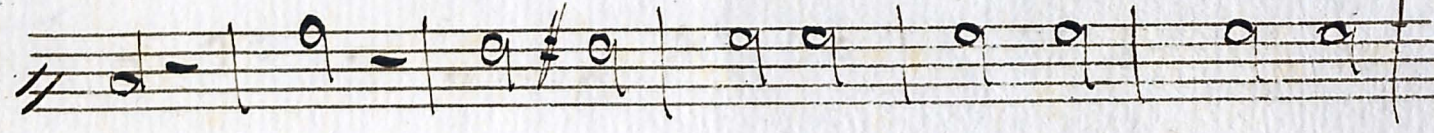
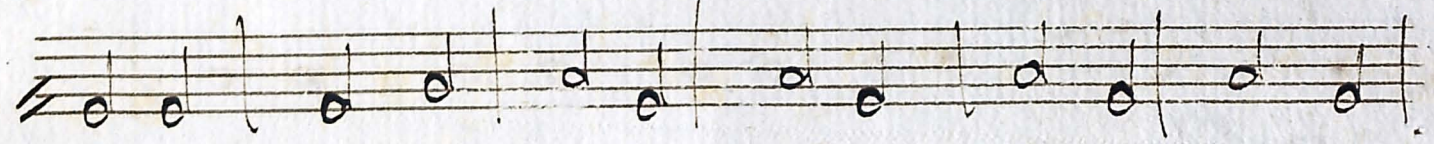
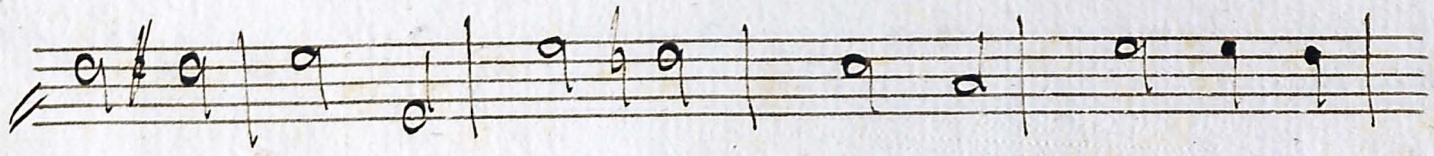
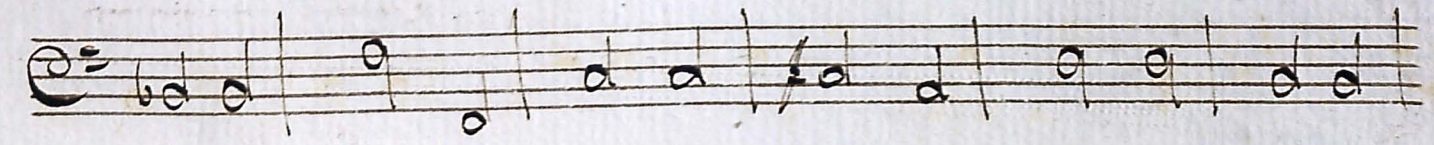
A handwritten musical score for a piece titled "Credo". The score is written on ten staves. The first staff begins with a treble clef, a common time signature (C), and a double bar line. Above the first few notes, the tempo markings "And^{te}" and "Tutti" are written. The music consists of a single melodic line with various note values, including quarter, eighth, and sixteenth notes, and rests. The notation is in a cursive, handwritten style. The paper shows signs of age, with some staining and discoloration.



And. sostenuto *Soli* $\text{C} = \frac{3}{4}$

Allegro *Tutti* $\text{C} = \frac{3}{4}$





Tutti
And
Sanctus

Adagio

Tutti
And
Agnus Dei

Adagio

Agnus Dei