

Chème varié
suivi d'un Menuet

pour la

GUITARRE

Composé

par



F E R D . S O R .

Op: 3.

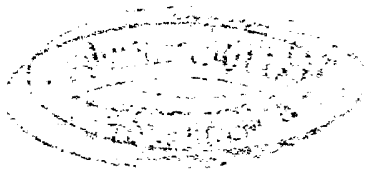
Prix 1 Fr:

Bonn et Cologne

1924
919.

chez N. SIMROCK.

2288.



Tema. Andante.

F: Sor
Op: 3.

The first staff of the 'Tema. Andante' section is written in treble clef with a 2/4 time signature. It begins with a melodic line of eighth notes, followed by a bass line of chords. A triplet of eighth notes is marked with a '3' above it.

The second staff continues the melodic and harmonic development. It features a melodic line with a second ending bracket and a double bar line, followed by a repeat sign. The bass line continues with chords.

The third staff shows further melodic and harmonic progression. It includes a melodic line with a triplet of eighth notes and a bass line with chords.

The fourth staff concludes the 'Tema. Andante' section. It features a melodic line with a second ending bracket and a double bar line, followed by a repeat sign. The bass line continues with chords.

Variazione
1.

The first staff of 'Variazione 1' is written in treble clef with a 2/4 time signature. It features a melodic line with a slur and a bass line with chords.

The second staff of 'Variazione 1' continues the melodic and harmonic development. It features a melodic line with a slur and a bass line with chords.

The third staff of 'Variazione 1' continues the melodic and harmonic development. It features a melodic line with a slur and a bass line with chords.

The fourth staff of 'Variazione 1' concludes the variation. It features a melodic line with a slur and a bass line with chords.

Variazione
2.

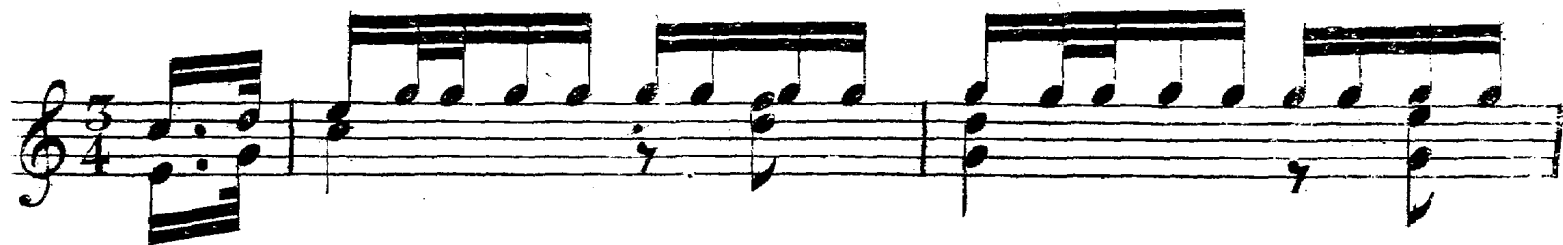
The first staff of 'Variazione 2' is written in treble clef with a 2/4 time signature. It features a melodic line with a slur and a bass line with chords.

The second staff of 'Variazione 2' concludes the variation. It features a melodic line with a slur and a bass line with chords.

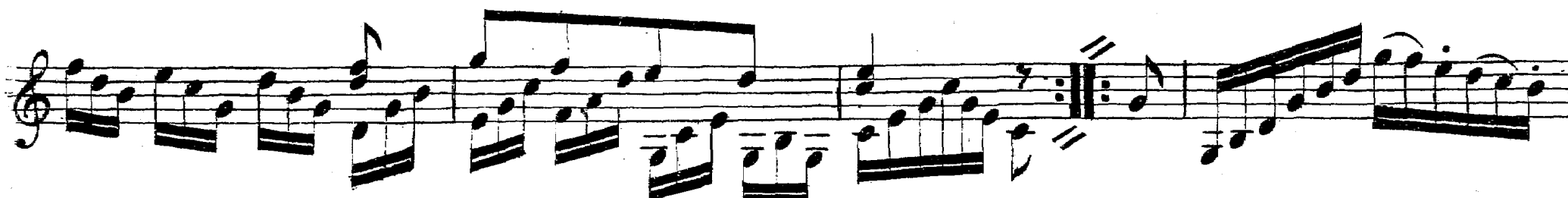
Variazione
3.

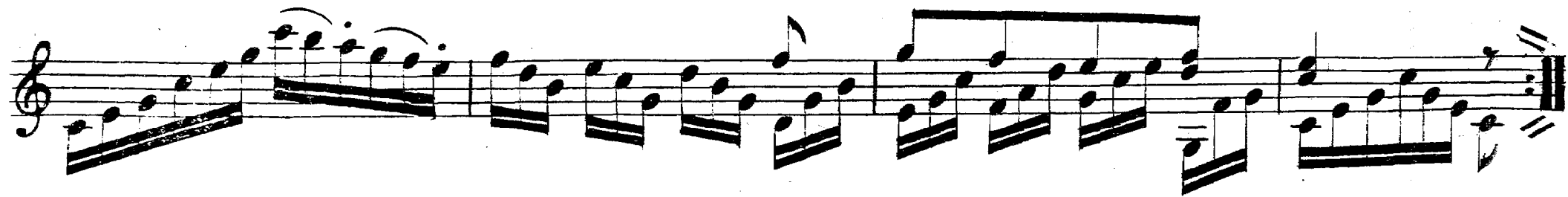
Variazione
4.

Variazione
5.



Variazione
6.





Menuetto.

