

EIGHT OVERTURES  
in 8 Parts,  
Four for Violins, Hoboys, or German Flutes  
AND  
Four for Violins, French Horns, &c.  
with a Bass  
FOR THE  
VIOLONCELLO & HARPSICORD.

COMPOS'D BY

*THOMAS AUGUSTINE ARNE.*

---

London. Printed for I. Walsh in Catharine-Street, in the Strand.

OF whom may be had, Just Publish'd  
For CONCERTS

Handel's 60 Overtures. 8 Parts	Handel's 12 Grand Concertos	Castrucci's Concertos
Haffe and Vinci's Overtures	Handel's Concertos for Hoboys. Op. 33	Stanley's Concertos
Dr. Green's Overtures	Geminiani's 12 Concertos	Weideman's Concertos G.F.
Handel's 80 Selected Songs. 6 Parts.	Corelli's 12 Solos made Concertos by Geminiani	Haffe's Concertos G.F.
Handel's 2d Set of 80 Selected Songs from his latest Oratorios. 6 Parts.	Corelli's 12 Concertos	Alberti's Concertos
Mudge's Concertos	Deffich's Concertos	Vivaldi's Concertos
St Martinis Concertos	Locatelli's Concertos	Teffarini's Concertos
		Albinoni's Concertos

2000 年 11 月 17 日

星期日

11 月 2 日 星期四

11 月 10 日

11 月 11 日 星期五



# VIOLINO PRIMO

## OVERTURE

I  
for. Pia.  
Largo ma non troppo  
for. Pia.  
for. Pia.  
for.

for.  
Pia.

for. Pia.  
for. Pia.  
for.

Solo  
Allegro Con Spiritofo  
Tutti

Pia.

for.

for.

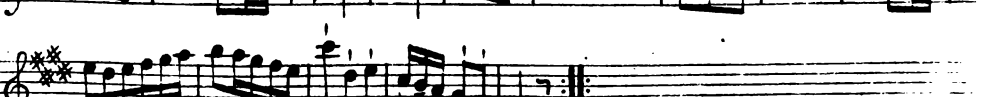
3

3

3

# VIOLINO PRIMO

3



# VIOLINO PRIMO

## OVERTURE

II

Con Spirito

Musical score for Violino Primo, Overture II, Con Spirito. The score consists of ten staves of music in G major, 3/4 time. It features various rhythmic patterns, including eighth and sixteenth notes, and rests. Performance markings include 'Pia.' and 'for.' with accents. The piece concludes with a double bar line.

### Fuge

Allegro

Musical score for Violino Primo, Fuge, Allegro. The score consists of two staves of music in G major, 3/4 time. It features a rhythmic pattern of eighth notes. Performance markings include 'Pia.' and 'for.' with accents.

# VIOLINO PRIMO

5



This page of a musical score for Violino Primo contains ten staves of music. The key signature is two sharps (F# and C#), and the time signature is 3/4. The music is written in a single melodic line on a treble clef staff. The first seven staves feature a complex, rhythmic melody with many sixteenth and thirty-second notes, often beamed together. The eighth staff begins with a double bar line and the marking *Ad?*. The ninth staff is marked *2<sup>d</sup> Time pia.* and *Minuetto*, with a 4/4 time signature and a key signature change to one sharp (F#). This section includes trills (*tr*) and dynamic markings *Pia.* and *for.*. The tenth staff continues the *Minuetto* section with similar dynamics and trills.

# VIOLINO PRIMO

F.H.

## OVERTURE III.

*Presto*

*p*

*for.*

*pp*

*tr*

*for.*







# VIOLINO PRIMO

2

This page of a musical score for Violino Primo contains ten staves of music. The notation is in treble clef with a key signature of one flat (B-flat). The music is characterized by intricate, fast-moving passages, including sixteenth-note runs and trills. Performance markings such as *tr* (trill), *for.* (forzando), and *po* (piano) are used throughout. A tempo change to *Andante pia* is indicated in the seventh staff, accompanied by a 3/4 time signature. The score concludes with a double bar line and repeat dots.

# VIOLINO PRIMO

## F. H. OVERTURE

*Presto*

# VIOLINO PRIMO

Andante e Piano

for. Pia.

for. Pia.

for.

Pia. for.

Allegro Con Spirito

for. Pia.



# VIOLINO PRIMO

15

The first system consists of three staves of music. The top staff begins with a treble clef, a key signature of one flat (B-flat), and a common time signature. It features a complex, fast-moving melodic line with many sixteenth and thirty-second notes. The middle and bottom staves continue this melodic line, with some rests and occasional longer note values.

The second system begins with the instruction "Grave e pia." in italics. It consists of a single staff of music with a treble clef, a key signature of one flat, and a common time signature. The tempo and mood are significantly slower than the previous section, featuring a simple, melodic line with long note values and a few rests.

The third system begins with the instruction "Gavotta Vivace" in italics. It starts with a 4-measure rest, followed by a treble clef, a key signature of one flat, and a common time signature. The music is characterized by a fast, rhythmic melody with many sixteenth notes and some triplets. The instruction "tr" (trill) is written above the first few notes.

The fourth system consists of a single staff of music with a treble clef, a key signature of one flat, and a common time signature. It begins with a piano (*p*) dynamic marking. The melody is fast and rhythmic, with many sixteenth notes and some triplets.

The fifth system consists of a single staff of music with a treble clef, a key signature of one flat, and a common time signature. It begins with a trill (*tr*) over a note, followed by a 3-measure rest. The melody is fast and rhythmic, with many sixteenth notes and some triplets.

The sixth system consists of a single staff of music with a treble clef, a key signature of one flat, and a common time signature. It begins with a forte (*f*) dynamic marking and a trill (*tr*) over a note. The melody is fast and rhythmic, with many sixteenth notes and some triplets.

The seventh system consists of a single staff of music with a treble clef, a key signature of one flat, and a common time signature. It begins with a trill (*tr*) over a note and a forte (*f*) dynamic marking. The melody is fast and rhythmic, with many sixteenth notes and some triplets.

The eighth system consists of a single staff of music with a treble clef, a key signature of one flat, and a common time signature. It begins with a 3-measure rest and a forte (*f*) dynamic marking. The melody is fast and rhythmic, with many sixteenth notes and some triplets.

The ninth system consists of a single staff of music with a treble clef, a key signature of one flat, and a common time signature. It begins with a trill (*tr*) over a note and a forte (*f*) dynamic marking. The melody is fast and rhythmic, with many sixteenth notes and some triplets.

The tenth system consists of a single staff of music with a treble clef, a key signature of one flat, and a common time signature. It begins with a trill (*tr*) over a note and a forte (*f*) dynamic marking. The melody is fast and rhythmic, with many sixteenth notes and some triplets. The system ends with a double bar line.

# VIOLINO PRIMO

## OVERTURE VII

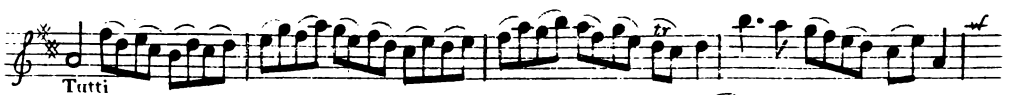
Largo

Allegro



# VIOLINO PRIMO

15





# VIOLINO PRIMO

17

Minuet  
Andante

*p* *f* *fortissimo*

Giga  
Con Spirito

*tr* *mord*

