

Deborah

Daniel Léo Simpson
December 12, 1972
Tucson, Arizona USA

Moderato ♩=112 rit. . . a tempo rit. . . . a tempo

3

mf

15

f *cresc.* *ff*

meno mosso ♩=112

4

p *dim.* *pp*

35

5

mp

mp *mp*

rit. . . a tempo ♩=112

65

f

81 lo stesso tempo ♩=112

f

90

mf *f*

V.S.

1st Horn in F

122 a tempo ♩=112 rall.

Largo Andante ♩=96 ff poco rit.

poco meno mosso ♩=96 rit. a tempo ♩=96 poco rit.

a tempo ♩=96 poco rit.

a tempo ♩=96

215 Tempo I ♩=112 rit. Sord.

p a tempo ♩=112 mf mp

Lo stesso tempo ♩=112 nat. 7 9 poco rit. a tempo ♩=112

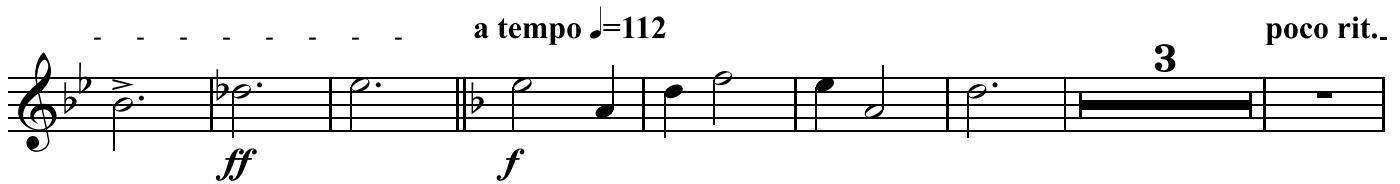
f



263



a tempo ♩=112



285 a tempo ♩=112



Allegro ♩=126



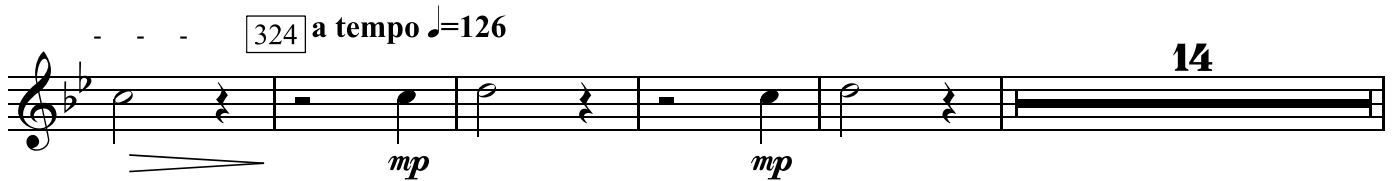
308



poco rit.



324 a tempo ♩=126



1st Horn in F

rit.

- poco rit. // Fugue ♩.=72

424

11

2

459

8

f

rit.

480 più mosso ♩.=126

2 2

rit.

496 meno mosso ♩.=112

f

poco rit. . a tempo ♩=112

a tempo ♩=112 rall.

Andante ♩=80 cresc. ff

554

mf

Maestoso

564

f

571

rit.

579

D-E-B-O-R-A-H

f

Largando

cresc.

ff

Deborah

Daniel Léo Simpson
December 12, 1972
Tucson, Arizona USA

Moderato ♩=112 **3** rit. . . a tempo rit. . . . a tempo **8**

15

f *cresc.* *ff*

meno mosso ♩=112

p *dim.* *pp*

35

9

mp
rit. . . a tempo ♩=112

65

f

81 lo stesso tempo ♩=112

f

90

mf

98

mf

V.S.

2nd Horn in F

Musical staff with notes and rests.

Musical staff with notes, rests, and a box containing "263".

Musical staff with notes, rests, and dynamic markings.

Musical staff with notes, rests, and dynamic markings.

Musical staff with notes, rests, and dynamic markings.

Musical staff with notes, rests, and dynamic markings.

Musical staff with notes, rests, and dynamic markings.

Musical staff with notes, rests, and dynamic markings.

Musical staff with notes, rests, and dynamic markings.

Musical staff with notes, rests, and dynamic markings.

2nd Horn in F

11

f *f*

4

cresc.

459

8

f

f

f

rit. 480 più mosso ♩=126

cresc. *f*

rit. 496 meno mosso ♩=112

f

3

mf

mf

mf

poco rit. .

mf

a tempo $\text{♩}=112$

2
f
rit.

a tempo $\text{♩}=112$ rall.

cresc. *ff*

554

Andante $\text{♩}=80$

mf

564

Maestoso

f

571

2
f
rit.

579

3
f
D - E - B - O - R - A - H

Largando

cresc. *ff*

Deborah

Daniel Léo Simpson
December 12, 1972
Tucson, Arizona USA

Moderato ♩=112 **3** rit. . . a tempo rit. . . . a tempo **8**

15

f meno mosso ♩=112 *cresc.* *ff*

p *dim.* *pp*

35

mp *mp*

65

rit. . . a tempo ♩=112

lo stesso tempo ♩=112

81

90

mf *f*

V.S.

rit.

a tempo ♩=112 rall. [124]

cresc.

ff

Largo

Andante ♩=96

poco rit. .

poco meno mosso ♩=96

rit. a tempo ♩=96

poco rit. .

mp

a tempo ♩=96

poco rit. .

a tempo ♩=96

mf

cresc.

rit. Sord.

215 Tempo I ♩=112

2

2

p

mp

Lo stesso tempo ♩=112 nat. 7

a tempo rit. 112 a tempo ♩=112 8

Musical staff with eighth notes and rests.

Musical staff with sixteenth notes and rests, marked with **6** and **f**. Measure 263 is boxed.

Musical staff with dynamics and tempo markings: *rit.*, **2**, *ff*, *a tempo* ♩=112, *f*, **3**, *poco rit.*

285

Musical staff with dynamics and tempo markings: *a tempo* ♩=112, *mf*

Musical staff with dynamics and tempo markings: *Allegro* ♩=126, *mp*

Musical staff with dynamics and tempo markings: **6**, **308**, *f*

Musical staff with dynamics and tempo markings: *f*

Musical staff with dynamics and tempo markings: **2**, *poco rit.*, **324**, *a tempo* ♩=126, *mf*, *mp*

Musical staff with dynamics and tempo markings: **14**

2 *rit.*
f

poco rit. // Fugue ♩=72 75 424 3
ff *f*

11
f

2
mf *cresc.*

459 8
f

f

rit. 2 2 480 più mosso ♩=126
cresc. *f*

rit.

496 meno mosso ♩=112
f

3

mf

f

poco rit. a tempo ♩=112

f

rit.

rall.
a tempo ♩=112

ff

554

Andante ♩=80

mf

564 Maestoso

f

571

f

579

rit.

f

D - E - B - O - R - A - H

Largando

ff

cresc.

Deborah

Daniel Léo Simpson
December 12, 1972
Tucson, Arizona USA

Moderato ♩=112 **3** rit. . . a tempo rit. . . a tempo **8**

15 *f* *cresc.* *ff*

meno mosso ♩=112 **4**

35 *p* *dim.* *pp*

4

9 **2**

65 *mp*

rit. . . a tempo ♩=112

f

81 *lo stesso tempo* ♩=112

f

90 *mf* *mf* **98**

V.S.

4th Horn in F

f rit. a tempo ♩=112 rall.

cresc.

ff

poco meno mosso ♩=96 rit. a tempo ♩=96 poco rit.

a tempo ♩=96 poco rit. a tempo ♩=96

mf

cresc. rit. *p*

mp

a tempo ♩=112 poco rit. *f*

6 263 6

f rit. a tempo ♩=112 poco rit.

ff *f* 3

285 a tempo ♩=112

mf

Allegro ♩=126

mp

6 308 9 poco rit.

f *mf*

324 a tempo ♩=126

mp 14

2 rit.

f

poco rit. // Fugue ♩=72 424 75 3

ff *f*

11

f

4

cresc. **f**

8 **f**

cresc. **rit.**

480 **più mosso** ♩=126

f

rit.

496 **meno mosso** ♩=112

f

3

mf

poco rit.

a tempo ♩=112

2 **f**

rit.



a tempo ♩=112 rall.



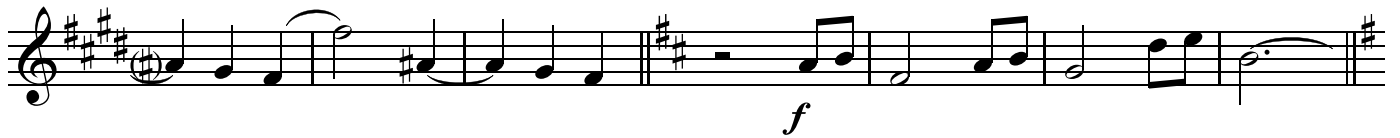
554

Andante ♩=80



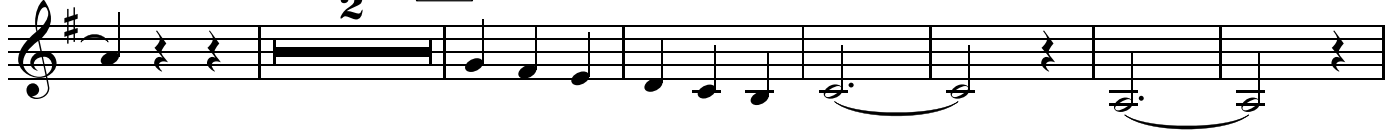
564

Maestoso



571

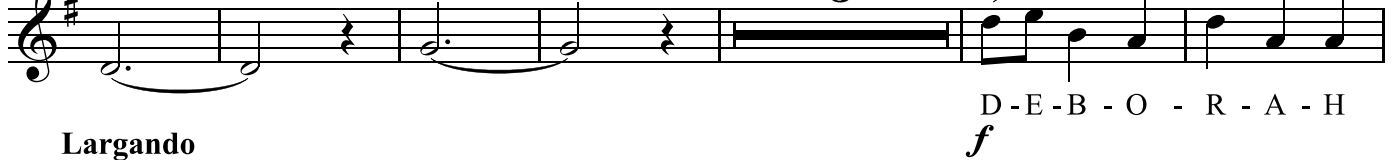
2



579

rit.

3



D-E-B-O-R-A-H

Largando

