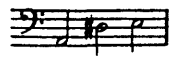


Georges Enesco Romanian Rhapsody No. 1



3 TIMBALES

Modéré

3 1 3

court long court court long long

2 9 3 1^{re} Vons

court court court long

f et large

accélérez

mf *sf*

Posément
Timb.

4 7 5 7 6

mf *p*

Même temps $\text{♩} = \text{♩}$

Plus vite

1^{re} Vons

pp

7 Posément

8 8 9 7 10

pp

Même temps $\text{♩} = \text{♩}$

Vons

4 6

p

11 Posément
Timb.

8

Fl. 8

12 Timb. 1

f lourd *mp* *ff* *f lourd*

2 3 4 5 6 7 3

dim. *p* *mf*

13 Plus vite

2 2 7

p *ppp*

TIMBALES

encore plus vite

14 9 10 15 12 16 Cl. *mf* Fl. *p*

16 17 12 18 Fl. *8*

Pte Fl. *8* **19** *Très vif* Timb. *fff*

précipitez

20 2 *p* *ff*

1 1 21 3

3 3 1 22 12 *sf*

Vons **23** Timb. *ff*

1 1 1 1

1 1 1 1 *p*

1 1 **24** 12 Vons & Pte Fl.

ff *sf*

TIMBALES

25 Timb. 1 2 3 4 5 6
ppp

7 8 9 10 11 12 13 14 15 16
toujours ppp

26 3 1 1 1
ff *mf*

27 1 1 1 5 *vons* *v*

28 1 1 1 *ff* *Timb.* *p* *f*

29 1 1 9 1 2 3
diminues *pppp*

4 5 6 7 8 9 10 11 12 13
toujours pppp

14 15 16 17 18 19 20 21 22 *pp* 23

30 *ff*

31 3 3 2

2 *p* *fff cassant*

2 2 4 2 *vons* *v*
4^e C. *marqué*

Detailed description: This page contains the musical score for the Timbales part of Enesco's Romanian Rhapsody No. 1, measures 25 through 32. The score is written in bass clef with a 2/4 time signature. It features various rhythmic patterns, including eighth and sixteenth notes, and rests. Dynamic markings range from *ppp* to *fff*. Performance instructions include *toujours ppp*, *diminues*, and *fff cassant*. Measure 25 is marked 'Timb.' and includes fingerings 1-6. Measure 27 includes the instruction '*vons* *v*'. Measure 32 includes the instruction '*vons* *v*' and a tempo marking '*4^e C. marqué*'. Measure numbers 25-32 are boxed in the original score.

TIMBALES

4 33 6 Vons 4^e C. Timb. *fff* marqué *fff*

2 34 7 Fl. Cl. *fff*

13 35 13 Fl. Cl. Pist. *ff*

36 Timb. *ff*

1 1 1 *mp*

1 1 37 9 *ff* *fff* *mf*

2 3 4 5 6 8 38 1 2 3 *ff* *mp* *fff*

4 5 6 1 2 3 4 5 6

7 8 9 39 10 11 12 13 *toujours ff* *fff* *long.* *f* *fff*

8 11 Fl. *f*

Timb. 40 *f* *Très vif* *p* *augmentes*

3 4 5 6 7 8 41 1 2 *et presses* *ff*

3 4 5 6 7 8 4 *fff* *très long.*

Georges Enesco Romanian Rhapsody No. 1

TRIANGLE et TAMBOUR

Modéré 8 **1** 8 **2** 8 **3** 7 **Posément** 2

long f très vite

4 8 **5** 7 **6** *vons* **Même temps** $\text{♩} = \text{♩}$ **6** *vons* **Plus vite** *pp*

7 **Posément**

Triangle *pp* 7 6 8 7 7 x 7 8 8 9 4

vons **10** **Même temps** $\text{♩} = \text{♩}$ *p*

Triangle *pp* 1 1 1 6/8

11 **Posément** 13 **12** *vons* *lourd* 4 *vons* *mf* *augmentés*

Tambour *pp* **13** **Plus vite** 14 **14** 19 **15** 12 **16** 20 **17** 12

18 Flûte 8 11 *pte Fl.* 8 *précipites*

19 Tambour *f* *très vif* 2 1 *p* *f* 2

TRIANGLE et TAMBOUR

20 *pte Flûte*

Tambour

1 4

p *p < f*

21 *vons*

2 2 8

p *p < f*

22 *Flûtes*

Tambour

12

ff *sf*

23 *Triangle*

ff *f*

2 3 4 5 6 7 8 9 10 11 12

24

13 14 15 16 3

p *ff* *sf*

15 25 16 26 *Harpe*

p *f*

Triangle

27

ff *f*

4 11

TRIANGLE et TAMBOUR

28 29 Fl. *mf* 10 *V^{on} seul*

Tambour *pp* *f* 30 2 1

31 *p* *f* *pte Flûte* *fff* 7 4

2 1 *fff* 32 11 33 6

Flûtes *fff marqué* *fff* Tambour 2 1

34 Triangle *mp* *ff* *ff* *p* 1 3 2

2 3 4 5 6 7 8 9 10 11 12 13

35 14 15 16 17 18 19 20 21 22 23 24 25 *toujours p*

Triangle *fff* *f* 1 2 3 4 26 27 28 1 2 3

TRIANGLE et TAMBOUR

Musical notation for Triangle and Tambour, measures 5-13. The Triangle part (top staff) has notes with stems up and stems down, with dynamics *mp* and *p*. The Tambour part (bottom staff) has notes with stems up and stems down, with dynamics *f* and *p*. A measure rest of 2 is shown at the end.

Musical notation for Flutes and Triangle, measures 15-16. The Flutes part (top staff) has notes with stems up and stems down, with dynamics *ff* and *sf*. The Triangle part (bottom staff) has notes with stems up and stems down, with dynamics *f* and *sf*. A measure rest of 15 is shown between measures 15 and 16.

Musical notation for Triangle, measures 17-19. The Triangle part (top staff) has notes with stems up and stems down, with dynamics *ff* and *p*. The Tambour part (bottom staff) has notes with stems up and stems down, with dynamics *ff* and *p*.

Musical notation for Triangle and Tambour, measures 9-19. The Triangle part (top staff) has notes with stems up and stems down, with dynamics *ff* and *sf*. The Tambour part (bottom staff) has notes with stems up and stems down, with dynamics *ff* and *sf*. A measure rest of 15 is shown between measures 15 and 16.

Musical notation for Tambour, measures 4-5. The Tambour part (top staff) has notes with stems up and stems down, with dynamics *p* and *ff*. A measure rest of 4 is shown at the beginning.

Musical notation for Flutes, measures 11-12. The Flutes part (top staff) has notes with stems up and stems down, with dynamics *f* and *ff*. A measure rest of 11 is shown at the beginning.

Musical notation for Triangle and Pte Flute, measures 40-44. The Triangle part (top staff) has notes with stems up and stems down, with dynamics *f* and *ff*. The Pte Flute part (bottom staff) has notes with stems up and stems down, with dynamics *ff* and *p*. A measure rest of 8 is shown between measures 40 and 41.

Musical notation for Triangle and Tambour, measures 40-44. The Triangle part (top staff) has notes with stems up and stems down, with dynamics *ff* and *sf*. The Tambour part (bottom staff) has notes with stems up and stems down, with dynamics *ff* and *sf*. A measure rest of 8 is shown between measures 40 and 41.

Georges Enesco Romanian Rhapsody No. 1

CYMBALES

Modéré 8 **1** 8 **2** Flûte **3** 7 7
f très vite

Posément 2 **4** 8 **5** 4 1^{re} Flûte **6** **Même temps** vous *p*

Cymb. avec une baguette molle de timbale **Plus vite**
pp 1 2 3 4 5 6 7 8 6/8

Posément **7** 9 **8** 8 **9** 5 1^{re} Fl. **10** **Même temps** *p*

Cymb. avec une baguette molle de timbale **11** **Posément** **12**
pp 1 1 6 13 10 2/4

13 **Plus vite** **14** **15** **16** **17** **18**
15 19 Flûte 11 20 12 20

19 **Très vif** vous **20** **21** **22** Flûte *fff*
fff 12 16 14

8 Fl. *fff*

23
Cymb. à l'ordinaire *f* 3 3 3 7 *f*

CYMBALES

24 25 26 pte Flûte

Cymb. f 7 3 27 12

28 29 Flûte mf

avec une baguette molle de timbale pppp 1 2 3 4 5

6 7 8 9 10

11 12 13 14 15

30 31 pte Flûte

à l'ordinaire ff étouffés 2 1 sff sec

32 33 Flûtes fff marqué

Cymb. ff étouffés 3 1 34 6 sff sec

CYMBALES

15 **35** 15 1^{er} Piston
ff

36 Cymb. 3 3 7 *f*

3 **37** 20 B^{ns} Cors

38 Cymb. 5 8 **39** Basses

Cymb. 2 3 *ff* *fff sec*

long **Allègrement** 3 *pp* 1 2 3

4 5 6 7 8 9 10 *augmentez*

40 11 12 13 14 **Très vif** 8

41 Fl 6 *ff* *avec une baguette molle de timbale* 3 *à l'ordinaire* *très long* *fff*