

# BALLETTI

Gighe, Correnti, Alemande e Sarabande

à Violino e Violone,  
con il secondo Violino à beneplacito

Opus I, Bologna 1684

Domenico Gabrielli

1651 – 1690

Published by Johan Tufvesson.

Non-commercial copying welcome

*Revision : 1.1*

## Violino Primo

## Balletto Primo

D. Gabrielli (1651–1690)

Allegro

3

5

7

10 *p*

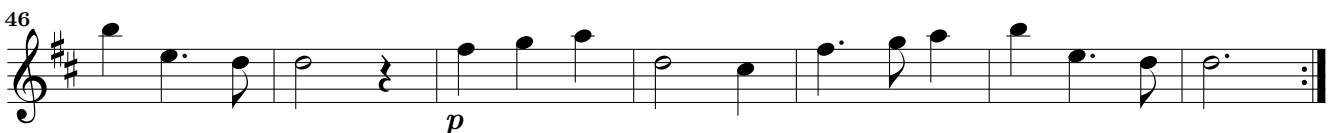
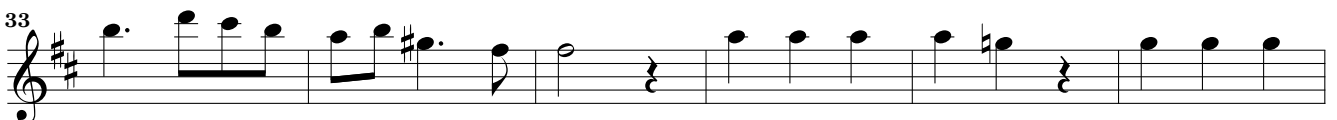
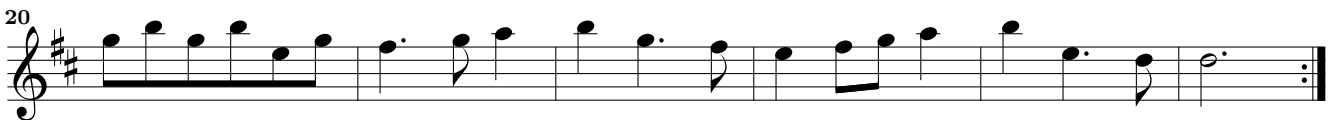
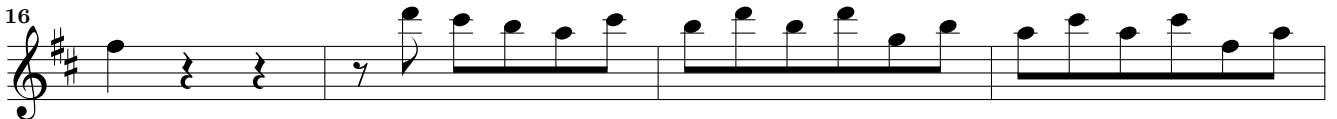
12

15

18

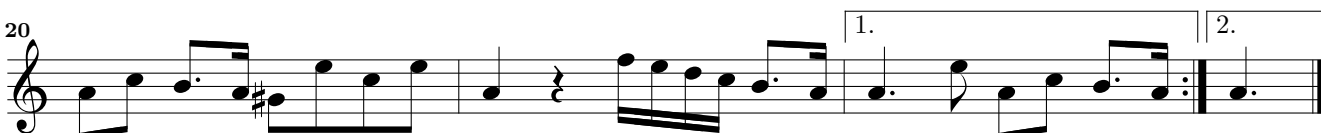
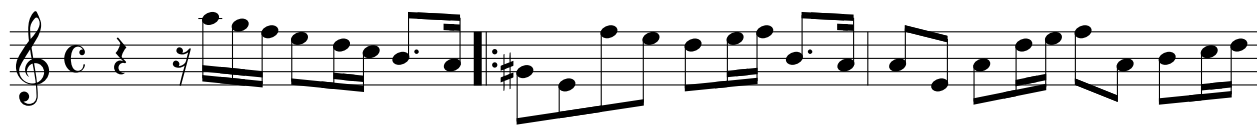
20 *p*

## Corrente Allegro



# Balletto Secondo

Allegro



Gigha Allegro

Musical score for Violino Primo, Gigha Allegro, measures 1-24. The score is written in treble clef with a 12/8 time signature. It consists of nine staves of music. Measure 10 includes dynamic markings *p* and *f*. Measure 13 includes a dynamic marking *p*. Measure 24 includes a dynamic marking *p*. The piece concludes with a double bar line and repeat dots at the end of measure 24.

# Balletto Terzo

Largo

4

6

8

11

14

Sarabanda Allegro

7

13

19

26

*p*

## Balletto Quarto

Allegro

Musical score for Balletto Quarto, Allegro, Violino Primo part. The score consists of seven staves of music in G major (one sharp) and common time (C). The first staff begins with a treble clef and a common time signature. The music is written in a single system. The score includes various rhythmic patterns, including eighth and sixteenth notes, and rests. There are repeat signs and first/second endings indicated by double bar lines and dots. The piece concludes with a double bar line and repeat dots.

Gigha Allegro

Musical score for Gigha Allegro, Violino Primo part. The score consists of seven staves of music in G major (one sharp) and common time (C). The first staff begins with a treble clef and a common time signature. The music is written in a single system. The score includes various rhythmic patterns, including eighth and sixteenth notes, and rests. There are repeat signs and first/second endings indicated by double bar lines and dots. The piece concludes with a double bar line and repeat dots. A dynamic marking of *p* (piano) is placed at the end of the score.

# Balletto Quinto

Allegro

4

7

10

13

*p* *f*

## Sarabanda Allegro

6

11

17

21

25

*p*



# Balletto Sesto

Adagio

4

7

10

13

16

19

*p*

*f*

Allemanda Allegro

4

7

# Balletto Settimo

Allegro

5

9

12

16

19

*p*

## Corrente Allegro

8

14

21

# Balletto Ottauo

Largo / Allegro

Musical score for Balletto Ottauo, Violino Primo, measures 1-19. The score is written in treble clef, 3/4 time, and B-flat major. It consists of six staves of music. The first staff starts with a treble clef, a key signature of two flats, and a common time signature. The music features a mix of eighth and sixteenth notes, with some rests and accidentals. The second staff begins with a measure rest of 4 measures. The third staff begins with a measure rest of 7 measures. The fourth staff begins with a measure rest of 11 measures. The fifth staff begins with a measure rest of 15 measures. The sixth staff begins with a measure rest of 19 measures and includes a piano (*p*) dynamic marking.

## Alemanda Allegro

Musical score for Alemanda Allegro, Violino Primo, measures 1-9. The score is written in treble clef, 3/4 time, and B-flat major. It consists of four staves of music. The first staff starts with a treble clef, a key signature of two flats, and a common time signature. The music features a mix of eighth and sixteenth notes, with some rests and accidentals. The second staff begins with a measure rest of 4 measures. The third staff begins with a measure rest of 7 measures. The fourth staff begins with a measure rest of 9 measures and includes a piano (*p*) dynamic marking.

## Balletto Nono

Largo

Musical score for the Largo movement of Balletto Nono. The score is written in treble clef, key of D major (one sharp), and common time (C). It consists of six staves of music. The first staff begins with a treble clef, a key signature of one sharp (F#), and a common time signature (C). The tempo is marked 'Largo'. The score includes various rhythmic values such as eighth and sixteenth notes, and rests. A first ending bracket is present at the end of the fifth staff. A dynamic marking 'p' (piano) is placed below the sixth staff.

Gigha Allegro

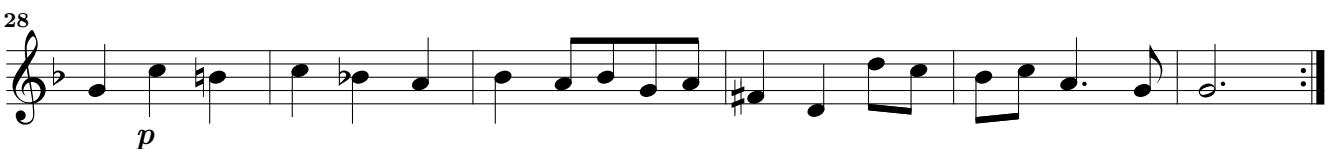
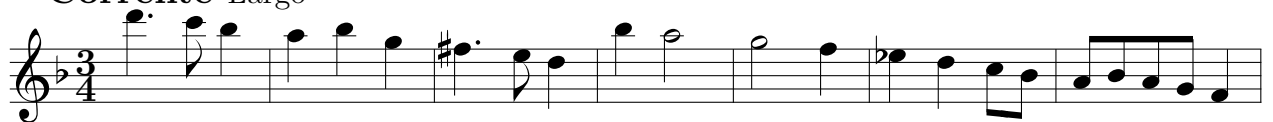
Musical score for the Gigha Allegro movement of Balletto Nono. The score is written in treble clef, key of D major (one sharp), and 12/8 time. It consists of six staves of music. The first staff begins with a treble clef, a key signature of one sharp (F#), and a 12/8 time signature. The tempo is marked 'Gigha Allegro'. The score includes various rhythmic values such as eighth and sixteenth notes, and rests. A first ending bracket is present at the end of the third staff. Dynamic markings 'p' (piano) are placed below the second, fourth, and sixth staves.

## Balletto Decimo

Largo



Corrente Largo



# Balletto Undecimo

Allegro

4

7

11

15

18

*p*

## Alemanda Allegro

3

5

8

*p*

# Balletto Duodecimo alla Francese

Presto

5

9

13

*p*

17

21

26

30

*p*

## Sarabanda Allegro

6

13

19

*p*