

**COLLEZIONE**

*di motivi d'Opere favorite*

**RIDOTTI PER**


**Violoncello**

*con accompagnamento di Basso*

ad uso degli Amatori e de' Principianti

DA

**J. F. DOTZAUER**

**Libro** 

Deposta all' I. R. Bibl.<sup>a</sup>

N<sup>o</sup> 1. 40679. Fr 3.---

„ 2. 40680. „ 3.---

„ 3. 40681. „ 4.---

*Milano presso Gio. Ricordi*

Firenze presso Gio. Ricordi e C.<sup>o</sup>

# VOLONCELLO

N.º 1.  
ALLEGRETTO  
di Boieldieu.

N.º 2.  
ALLEGRETTO.

VIOLONCELLO

N.º 3.

ALLEGRETTO  
di Onslow.

N.º 4.

ALLEGRETTO.

VIOLONCELLO

N.º 5.  
LARGHETTO.  
di M. v. Weber

N.º 6.  
Andante con moto

N.º 7.  
All.º grazioso.

N.º 8.  
Tempo di Marcia.

VIOLONCELLO

Allegro non troppo

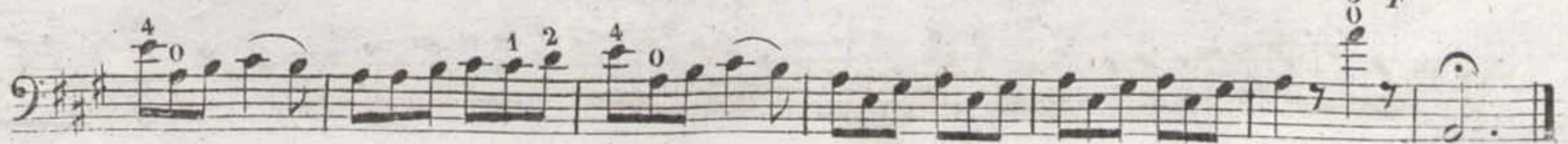
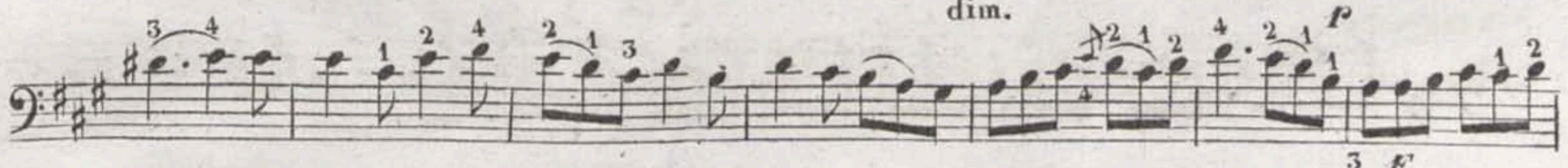
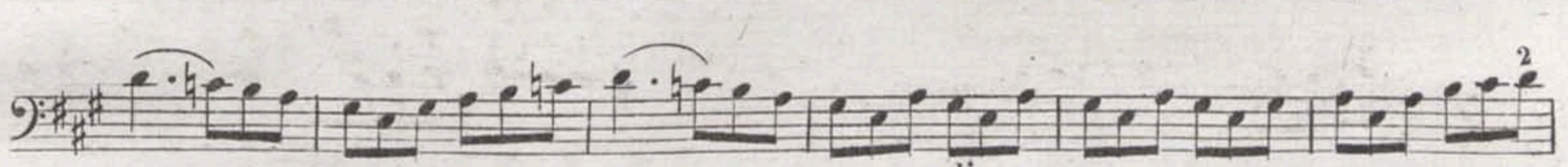
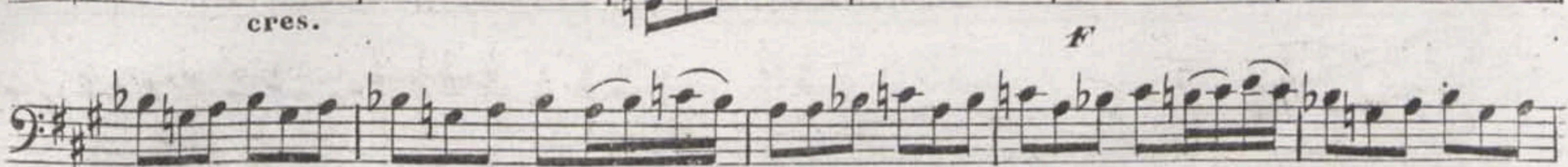
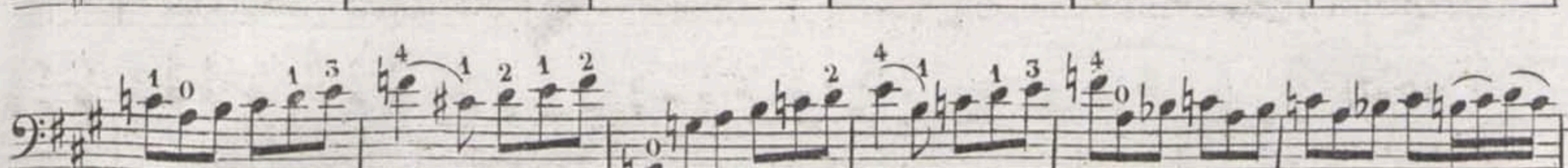
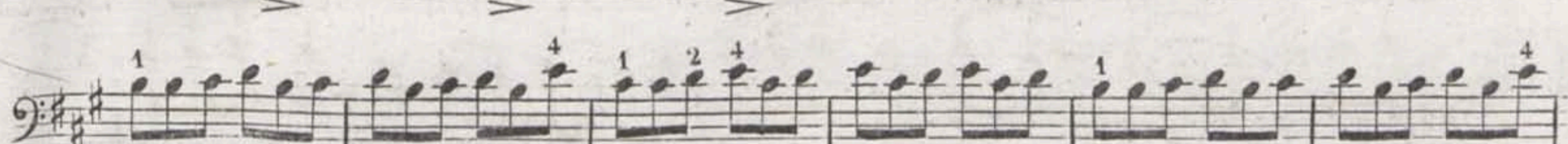
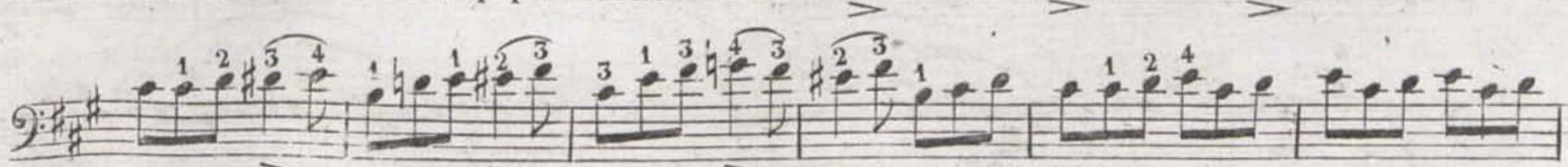
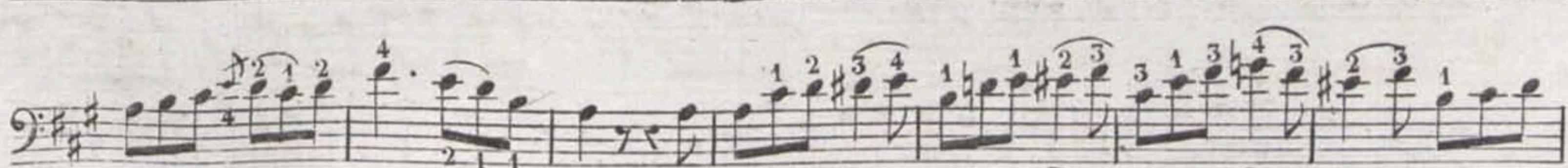
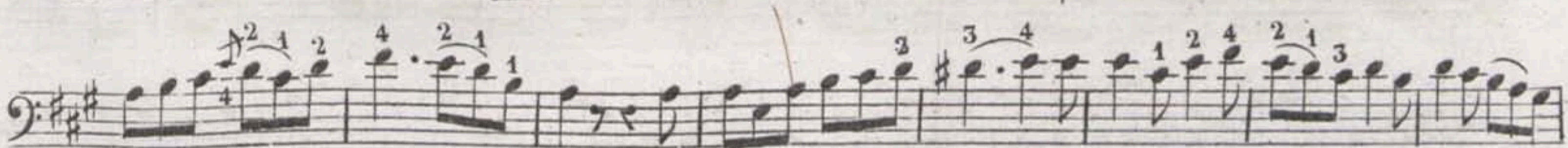
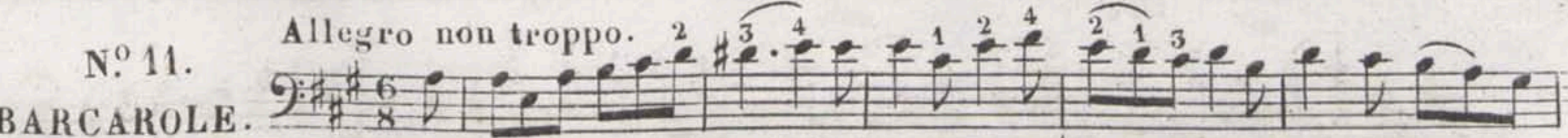
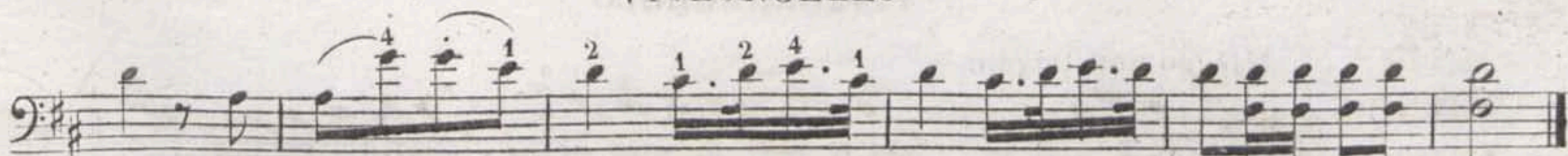
N° 9.  
E. Auber.

tire'

N° 10.  
ALLEGRO.

VOLONCELLO

N.º 11.  
 BARCAROLE. Allegro non troppo.



VIOLONCELLO

N.º 12.  
ANDANTE  
di Mehul.

tire'

mf dol.

mf

N.º 13.  
Allegro moderato.

p dol.

N.º 14.  
ANDANTE  
di Rossini.

p dol.

VIOLONCELLO

First musical staff in bass clef with a key signature of one sharp (F#). It begins with a forte (*f*) dynamic. The notation includes various note values, slurs, and trills (*tr*). Fingering numbers (1-4) are placed above the notes. Below the staff, the sequence of fingerings 2 1 2 4 0 2 1 2 4 1 is written.

Second musical staff in bass clef, continuing the piece. It features a piano (*p*) dynamic marking. The notation includes slurs, trills, and fingering numbers.

Third musical staff in bass clef, continuing the piece. It features a piano (*p*) dynamic marking. The notation includes slurs, trills, and fingering numbers.

Fourth musical staff in bass clef, continuing the piece. It features a *dim.* (diminuendo) dynamic marking, followed by a forte (*f*) dynamic. The notation includes slurs, trills, and fingering numbers.

Fifth musical staff in bass clef, continuing the piece. It features a forte (*f*) dynamic marking. The notation includes slurs, trills, and fingering numbers.

N.º 15.  
ANDANTINO.

Sixth musical staff in bass clef, marking the beginning of a new section. It is in 6/8 time and starts with a *dol.* (dolce) dynamic. The notation includes slurs, trills, and fingering numbers.

Seventh musical staff in bass clef, continuing the section. The notation includes slurs, trills, and fingering numbers.

Eighth musical staff in bass clef, continuing the section. The notation includes slurs, trills, and fingering numbers.

Ninth musical staff in bass clef, continuing the section. The notation includes slurs, trills, and fingering numbers.

Tenth musical staff in bass clef, continuing the section. The notation includes slurs, trills, and fingering numbers.