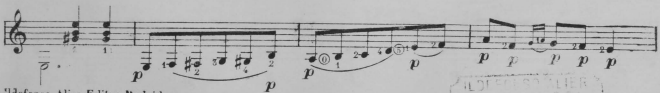


MALAGUEÑA

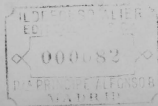
FÁCIL.

E TÁRREGA.



Ildefonso Alier, Editor, Madrid.

5515



2

3

3

C 1^a

3

p

3

C 1^a

p p p p p p

i m p p p p

i m i m i m p p p p

Musical staff with treble clef, key signature of one sharp (F#), and 2/4 time signature. It contains a melodic line with various ornaments and fingerings. Above the staff, 'C. 1ª' and 'C. 5ª' are indicated with dashed lines.

Musical staff with treble clef, key signature of one sharp (F#), and 2/4 time signature. It contains a melodic line with ornaments and fingerings. Above the staff, 'C. 1ª' is indicated with a dashed line. Below the staff, the lyrics 'i a m i a m' are written.

Musical staff with treble clef, key signature of one sharp (F#), and 2/4 time signature. It contains a melodic line with ornaments and fingerings.

COPLA.

Musical staff with treble clef, key signature of one sharp (F#), and 2/4 time signature. It contains a melodic line with ornaments and fingerings. Below the staff, the dynamic marking 'p' is used.

Musical staff with treble clef, key signature of one sharp (F#), and 2/4 time signature. It contains a melodic line with ornaments and fingerings. Below the staff, the dynamic marking 'p' is used.

Musical staff with treble clef, key signature of one sharp (F#), and 2/4 time signature. It contains a melodic line with ornaments and fingerings.

Musical staff with treble clef, key signature of one sharp (F#), and 2/4 time signature. It contains a melodic line with ornaments and fingerings.

