

DOMENICO ZIPOLI

O Daliso, da quel dì che partisti

*Cantata per soprano e basso continuo*

## Parti

A cura di

Luigi Cataldi

Edited by

Non-commercial copying welcome

La presente partitura è stata stampata impiegando solo software non commerciale (**T<sub>E</sub>X**, la macro musicale **MusiX<sub>T</sub>E<sub>X</sub>** e i preprocessori **MTX** e **PMX**) e può essere copiata e distribuita liberamente purché senza scopo di lucro.

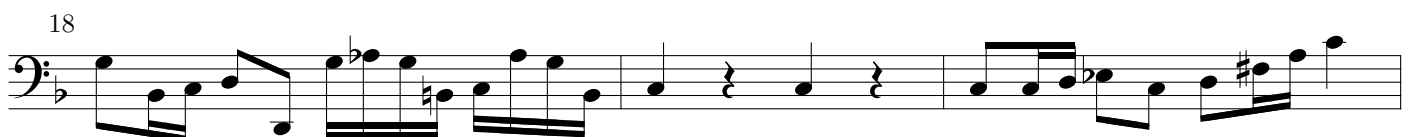
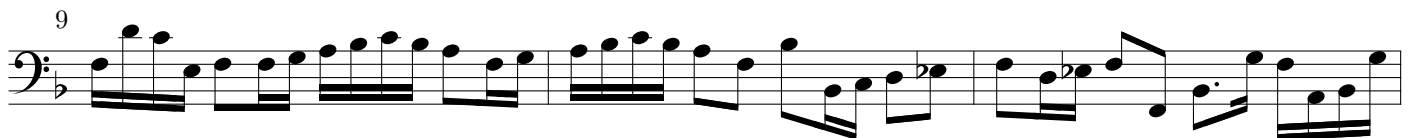
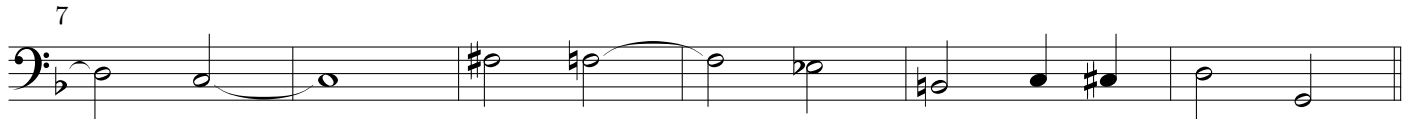
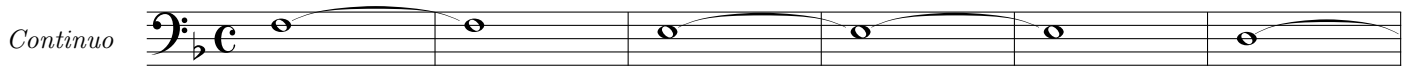
Critiche, suggerimenti e correzioni sono graditi e vanno inviati all'indirizzo [luicatal@tin.it](mailto:luicatal@tin.it).

This score is printed using only free software (**T<sub>E</sub>X**, the macro package **MusiX<sub>T</sub>E<sub>X</sub>** and the preprocessors **MTX** and **PMX**) and may be copied freely but only for non-commercial use.

Criticism, suggestion and correction are welcome and may be sent to [luicatal@tin.it](mailto:luicatal@tin.it).

# O Daliso, da quel dì che partisti

Domenico Zipoli  
(1688–1726)



24

27

29

32

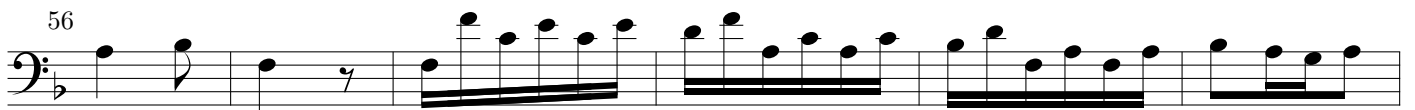
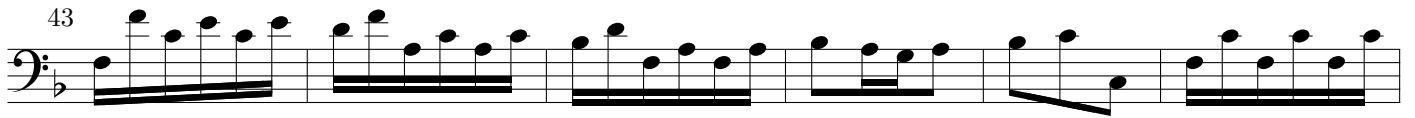
*Da Capo*

6

13

21

28

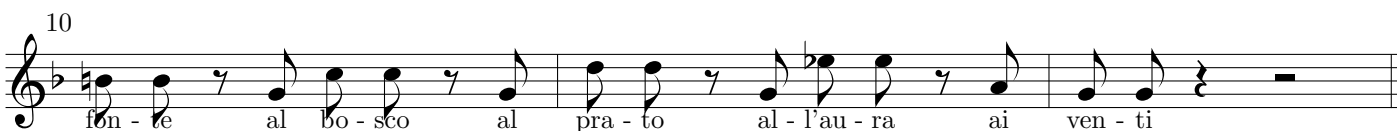
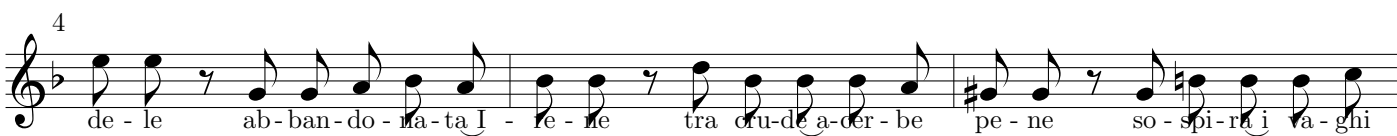
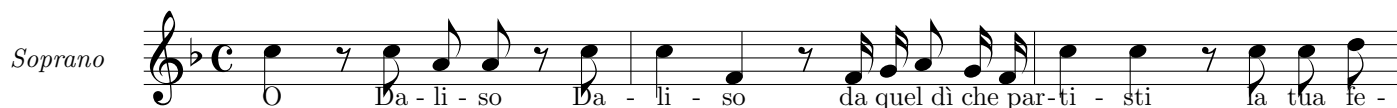


*Da Capo*

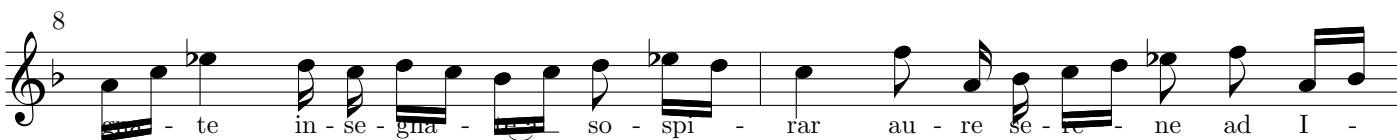
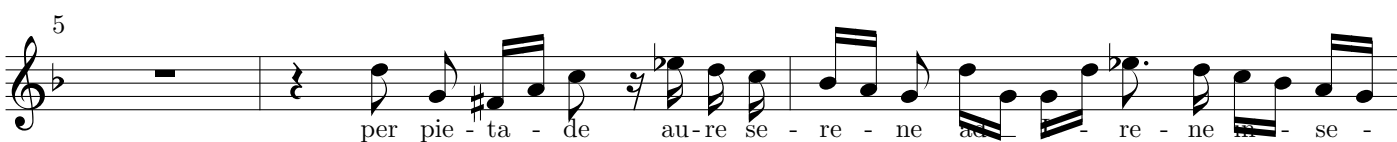
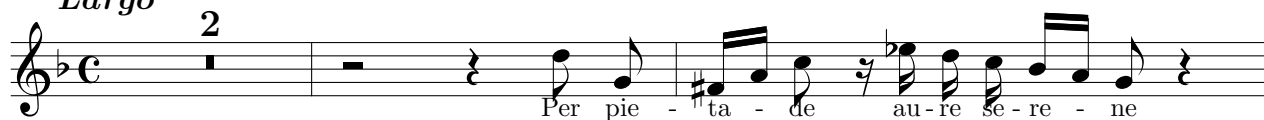


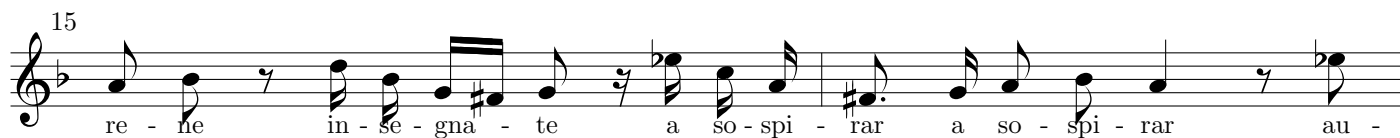
# O Daliso, da quel dì che partisti

Domenico Zipoli  
(1688–1726)



*Largo*



15  

 re - ne in - se - gna - te a so - spi - rar a so - spi - rar au -

17  

 re se - re - ne ad I - re - ne per pie - ta - de in - se - gna - te a so - spi - rar.

19  

 pic - uel - se - gna - te a so - spi - rar

21  

 ad I - re - ne a so - spi - rar. Deh mo -

24  

 stra - te o fon - ti o fiu - mi a' miei lu - mi nuova i - de - a nuova i -

26  

 a di la - cri - mar nuova i - de - a di la - cri - la - cri -

28  

 mar Deh mo - stra - te o - ti o lu - mi a' miei lu - mi nuova ide - a nuova i -

31  

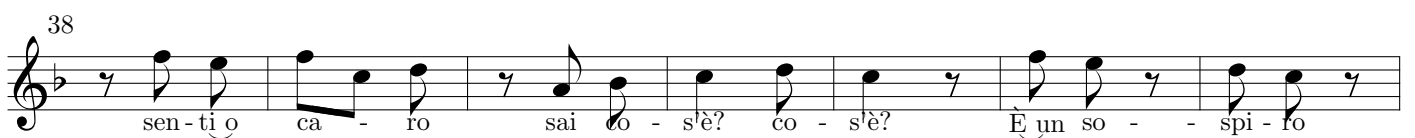
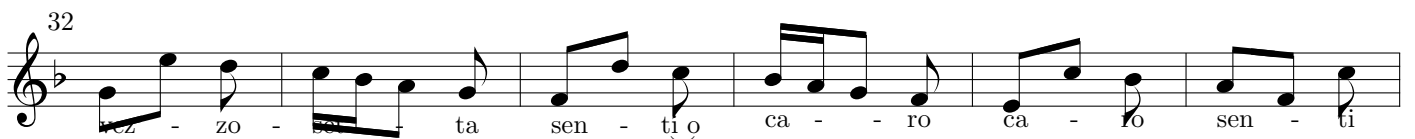
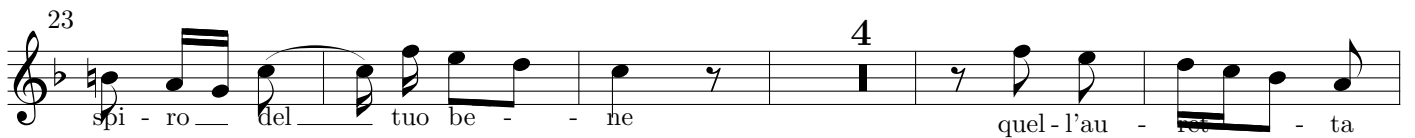
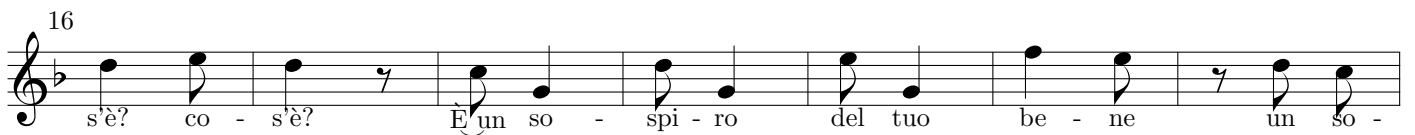
 de - a di la - cri - nuova i - de - a di la - cri - mar deh mostra - te o

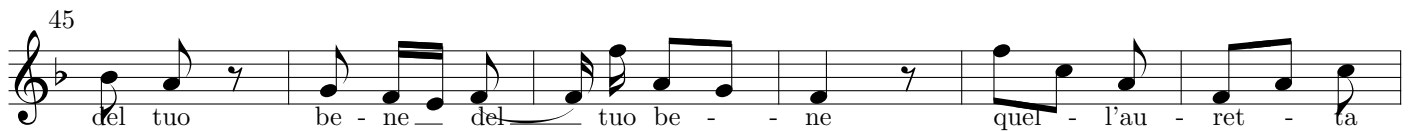
33  

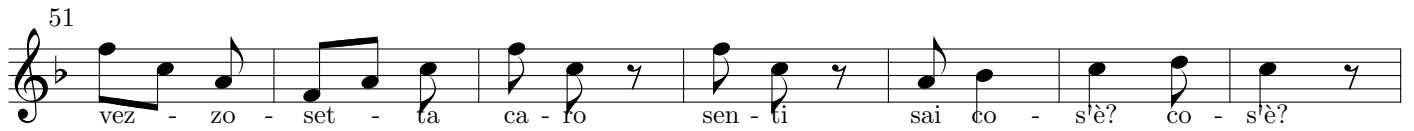
 fon - ti o fiu - mi a' miei lu - mi nuova i - de - a di la - cri - mar la - cri - mar

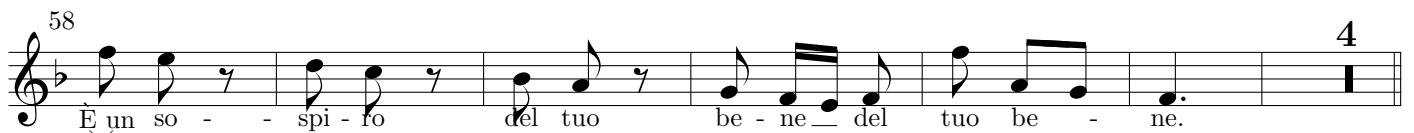
*Da Capo*





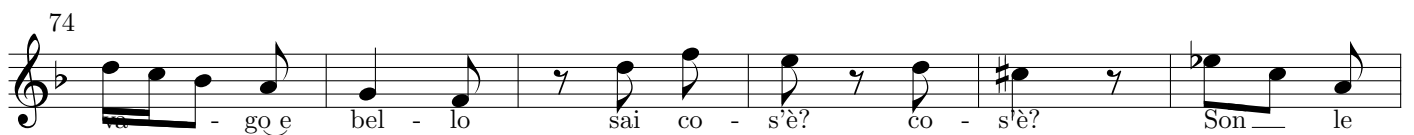
45  

 del tuo be - ne - del tuo be - - ne quel - l'au - ret - ta

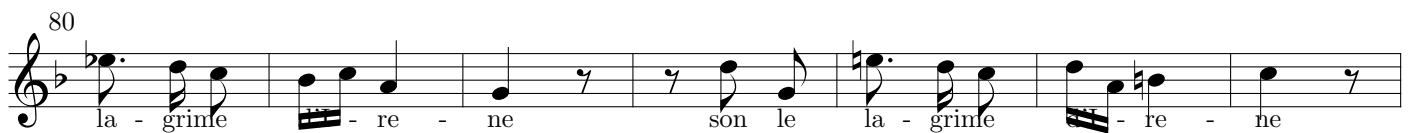
51  

 vez - zo - set - ta ca - fo sen - ti sai co - s'è? co - s'è?

58  

 È un so - - spi - fo del tuo be - ne - del tuo be - - ne. 4

68  

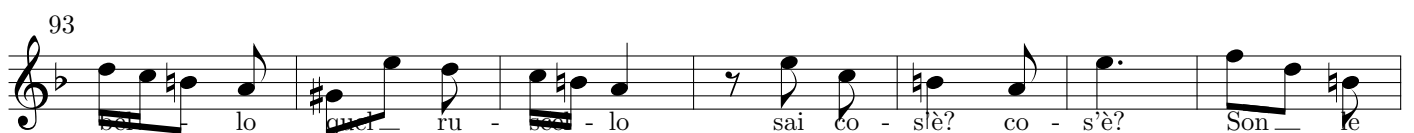
 Ve di o ca - fo quel ru - scel - lo quel ru - scel - lo

74  

 - go e bel - lo sai co - s'è? co - s'è? Son - le

80  

 la - grime - re - ne son le la - grime - re - ne

87  

 Ve - di o ca - fo quel ru - scel - lo - go e

93  

 lo quel ru - scel - lo sai co - s'è? co - s'è? Son - le

100  

 la - gri-me - re - ne son le la - gri-me - re - ne

*Da Capo*