

Violini Concerto No. 2.

Op. 162

Allegro moderato in G#m

(NB p. 7)

Vcl. I

Handwritten musical notation for Violin I and Piano accompaniment. The Violin I part is on a single staff with a treble clef and a key signature of two sharps (G#m). The piano accompaniment is on two staves (treble and bass clefs). The music features complex rhythmic patterns and dense chordal textures.

P2

Handwritten musical notation for Piano accompaniment, labeled P2. It consists of two staves (treble and bass clefs) showing intricate rhythmic and harmonic accompaniment for the violin part.

Vcl. II

Handwritten musical notation for Violin II and Piano accompaniment. The Violin II part is on a single staff with a treble clef and a key signature of two sharps (G#m). The piano accompaniment is on two staves (treble and bass clefs). The music features complex rhythmic patterns and dense chordal textures.

Handwritten musical notation for Violin II and Piano accompaniment. The Violin II part is on a single staff with a treble clef and a key signature of two sharps (G#m). The piano accompaniment is on two staves (treble and bass clefs). The music features complex rhythmic patterns and dense chordal textures.

Handwritten musical notation for Violin II and Piano accompaniment. The Violin II part is on a single staff with a treble clef and a key signature of two sharps (G#m). The piano accompaniment is on two staves (treble and bass clefs). The music features complex rhythmic patterns and dense chordal textures.

Handwritten musical notation for Violin II and Piano accompaniment. The Violin II part is on a single staff with a treble clef and a key signature of two sharps (G#m). The piano accompaniment is on two staves (treble and bass clefs). The music features complex rhythmic patterns and dense chordal textures.

Handwritten musical notation for Violin II and Piano accompaniment. The Violin II part is on a single staff with a treble clef and a key signature of two sharps (G#m). The piano accompaniment is on two staves (treble and bass clefs). The music features complex rhythmic patterns and dense chordal textures.

Handwritten musical score, first system. It consists of three staves. The top staff contains a melodic line with various notes and rests. The middle and bottom staves contain complex chordal accompaniment with many notes and accidentals. A circled number '2' is written above the first measure of the top staff. The word 'Andante' is written in the middle of the second staff.

Handwritten musical score, second system. It consists of three staves. The top staff continues the melodic line. The middle and bottom staves continue the chordal accompaniment. There are some scribbles and corrections in the bottom staff.

Handwritten musical score, third system. It consists of three staves. The top staff continues the melodic line. The middle and bottom staves continue the chordal accompaniment. A circled number '3' is written above the first measure of the top staff.

Handwritten musical score, fourth system. It consists of two staves. The top staff continues the melodic line. The bottom staff contains a series of repeated notes, possibly a bass line or a specific accompaniment pattern.

Handwritten musical score on aged paper, featuring multiple staves of music. The notation includes various notes, clefs, and dynamic markings. A large blue ink blot is present at the top center. A circled number '4' is written on the second staff. Several sections of the score are crossed out with diagonal lines. The paper shows signs of age, including yellowing and foxing.

Key features of the score include:

- Multiple staves of musical notation with notes, rests, and clefs.
- A large blue ink blot at the top center.
- A circled number '4' on the second staff.
- Diagonal lines crossing out sections of the score, particularly in the lower right quadrant.
- Dynamic markings such as *all*, *rit*, and *alleg*.
- Handwritten annotations and corrections throughout the piece.

5

Handwritten musical score for piano, consisting of 12 systems of staves. The notation includes treble and bass clefs, various note values (quarter, eighth, sixteenth notes), rests, and dynamic markings such as *pp* and *mf*. The score is written in a single system with multiple staves per system, typical of a piano score. The handwriting is in black ink on aged paper. There are some corrections and scribbles throughout the piece, particularly in the later systems. The first system starts with a treble clef and a key signature of one sharp (F#). The piece concludes with a double bar line and a fermata over the final note.

Two empty musical staves at the bottom of the page, consisting of five-line staves with no notation.

Handwritten musical notation on a single staff, featuring a complex melodic line with many accidentals and slurs.

Handwritten musical notation on a single staff, showing a series of notes with various accidentals and a large slur.

Handwritten musical notation on a single staff, with a circled '7' and dense melodic patterns.

Handwritten musical notation on a single staff, featuring a melodic line with slurs and some scribbled-out notes.

Handwritten musical notation on a single staff, with a circled '8' and very dense, complex notation.

Handwritten musical notation on a single staff, showing a melodic line with many accidentals.

Handwritten musical notation on a single staff, with a circled '8' and dense melodic patterns.

Handwritten musical notation on a single staff, featuring a melodic line with slurs and a circled '8'.

Handwritten musical notation on a single staff, with a circled '8' and some notes.

v.s.

Handwritten musical notation on a five-line staff. The notation includes various rhythmic values, accidentals (sharps and naturals), and some slurs. The music appears to be a single melodic line.

Handwritten musical notation on a five-line staff. A section of the music is labeled "Gloria". The notation is dense with notes and accidentals, including some triplets.

Handwritten musical notation on a five-line staff, continuing the melodic line from the previous system. It features complex rhythmic patterns and accidentals.

Handwritten musical notation on a five-line staff. This system shows a change in texture, possibly representing an accompaniment part, with more frequent notes and some rests.

Handwritten musical notation on a five-line staff, featuring a prominent melodic line with many notes and accidentals. There are some slurs and dynamic markings.

Handwritten musical notation on a five-line staff, concluding the main piece of music. It includes a final cadence with a double bar line and some final notes.

9

Two empty musical staves at the bottom of the page, consisting of five lines each.

Insertion after p. 7. Qui, (omitted page)

Inscr. after p. 7. line 1.

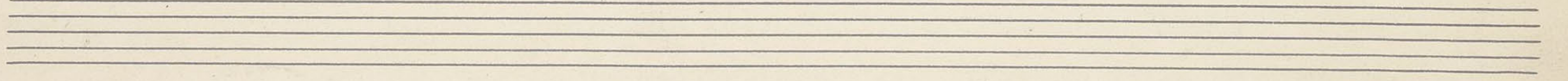
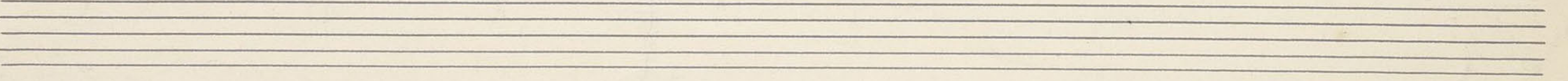
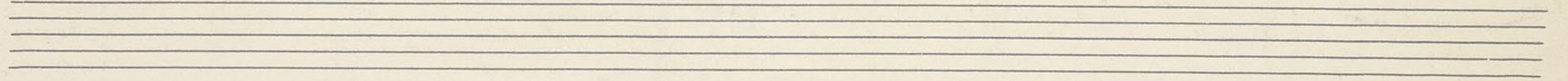
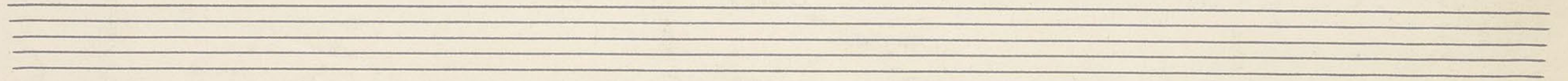
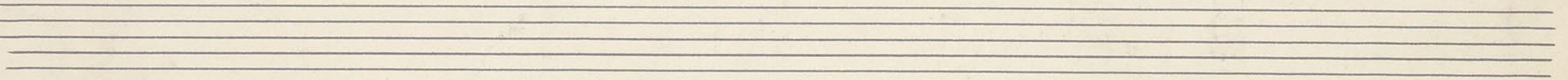
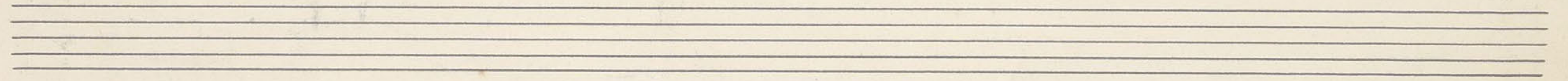
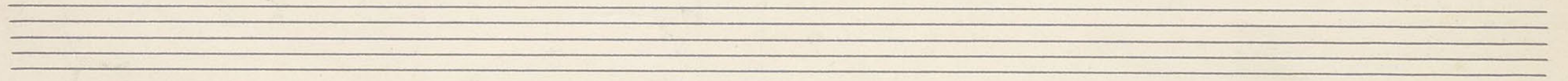
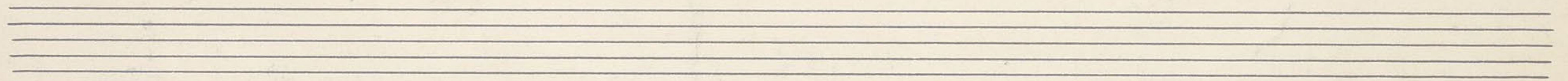
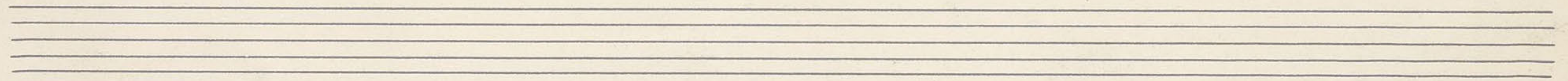
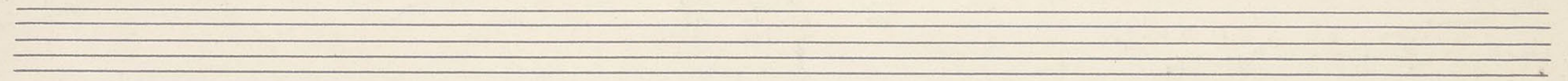
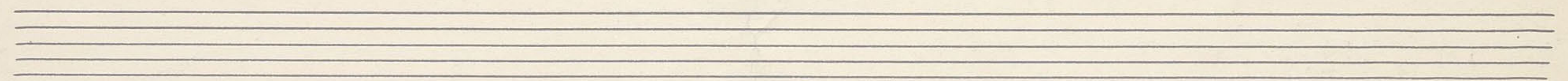
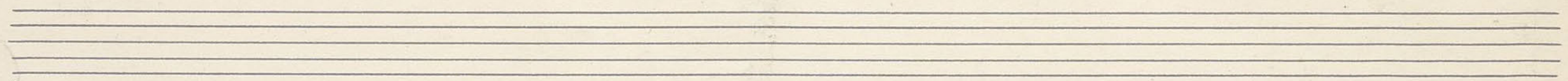
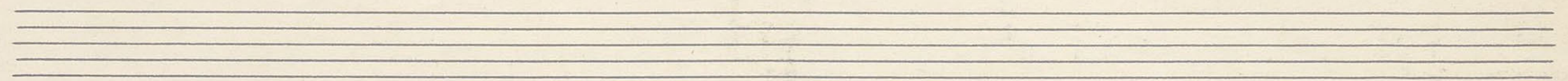
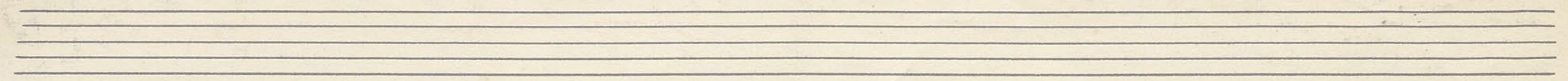
(10)

Handwritten musical score for a piece titled "Inscr. after p. 7. line 1." The score is written on ten systems of staves, each with a treble and bass clef. The music is in a key with two sharps (F# and C#) and a 3/4 time signature. The notation includes various note values, rests, and dynamic markings such as "p" (piano) and "f" (forte). There are several measures with complex rhythmic patterns and some measures with multiple notes beamed together. The score ends with two empty systems of staves at the bottom of the page.

Handwritten musical notation on a grand staff. The top staff contains a complex melodic line with many slurs and ties. The middle and bottom staves contain dense chordal accompaniment with many accidentals and slurs. The notation is dense and appears to be a sketch or a complex piece of music.

Handwritten musical notation on a grand staff. The notation is sparse, with a few notes and chords. A handwritten note in the middle of the staff reads: "Got other MS. page 7. line 2".

A series of ten empty musical staves, arranged vertically, occupying the lower half of the page. They are completely blank, with no notation or markings.



con

I have
left
out
2 pages
+ inserted
them on
the back
sheet.

ral *a tempo sempre animato*

con

mp

mp

8

Handwritten musical notation for the first system, consisting of three staves. The top staff features complex chordal textures with many sharps and naturals. The middle staff has a melodic line with some slurs. The bottom staff contains a bass line with chords and some rests.

Handwritten musical notation for the second system, consisting of three staves. A circled number "13" is written above the first staff. The notation continues with complex chords and melodic lines.

Handwritten musical notation for the third system, consisting of three staves. The notation includes complex chords and melodic lines, with some slurs and dynamic markings.

Handwritten musical notation for the fourth system, consisting of three staves. The top staff has a large section of music that has been heavily scribbled out with dark ink.

Two empty musical staves at the bottom of the page.

Handwritten musical notation for the first system, featuring a treble clef and a complex melodic line with many accidentals. The notation is dense and includes various rhythmic values and dynamic markings.

Handwritten musical notation for the second system, including a bass clef and a continuation of the complex melodic line. The notation is dense and includes various rhythmic values and dynamic markings.

Andante

Handwritten musical notation for the third system, marked "Andante" and featuring a 3/4 time signature. The melodic line is more flowing and includes dynamic markings such as *p* and *pp*.

Handwritten musical notation for the fourth system, continuing the melodic development with various dynamics and phrasing. The notation includes slurs and dynamic markings.

Two empty musical staves at the bottom of the page, consisting of five-line staves without any notation.

14

Handwritten musical score for measures 14-15. The score is written on four systems of staves. The first system (measures 14-15) is in treble clef with a key signature of one sharp (F#). The second system (measures 14-15) is in bass clef. The third system (measures 14-15) is in treble clef with a key signature of one sharp. The fourth system (measures 14-15) is in bass clef. The notation includes various notes, rests, and dynamic markings such as 'pp' and 'p'. There are also some handwritten annotations like 'poco' and 'p'.

15

Handwritten musical score for measures 16-17. The score is written on four systems of staves. The first system (measures 16-17) is in treble clef with a key signature of one sharp. The second system (measures 16-17) is in bass clef. The third system (measures 16-17) is in treble clef with a key signature of one sharp. The fourth system (measures 16-17) is in bass clef. The notation includes various notes, rests, and dynamic markings such as 'p'.

16

Handwritten musical score for measures 18-19. The score is written on four systems of staves. The first system (measures 18-19) is in treble clef with a key signature of one sharp. The second system (measures 18-19) is in bass clef. The third system (measures 18-19) is in treble clef with a key signature of one sharp. The fourth system (measures 18-19) is in bass clef. The notation includes various notes, rests, and dynamic markings such as 'p' and 'cft'.

This page contains a handwritten musical score, likely for a piano or similar instrument. The score is organized into several systems, each consisting of multiple staves. The notation is dense and includes various musical symbols such as notes, rests, beams, and slurs. There are several instances of double bar lines with repeat signs (two short horizontal lines) on the left side of the staves. A specific marking, "simili", is written in the middle of one of the systems. The paper shows signs of age, with some staining and a small tear on the right edge. At the bottom of the page, there are several empty staves, and a circled number "17" is visible near the end of the main notation.

17

This page contains a handwritten musical score with the following characteristics:

- Systems:** The score is organized into several systems, each consisting of multiple staves. The first system has four staves, the second has three, the third has two, and the fourth has two. The final system at the bottom has two staves.
- Complexity:** The notation is highly complex, featuring many beamed notes, slurs, and dynamic markings such as *p* (piano) and *f* (forte).
- Key Signature:** The key signature is indicated by two sharps (F# and C#) on the first staff of each system.
- Section Markings:** Double bar lines with repeat signs are used to separate different sections of the music.
- Deletion:** A significant portion of the score, spanning from the middle of the third system to the end of the fourth system, is crossed out with a large, bold diagonal line.
- Page Number:** The number "18" is circled in the lower-left area of the page, possibly indicating a measure or section number.

Handwritten notes in the top left corner, possibly indicating the name of the piece or the composer.

Handwritten musical notation for the first system, consisting of three staves. The notation includes various notes, rests, and accidentals, with some notes grouped by slurs.

Handwritten musical notation for the second system, consisting of three staves. The notation includes various notes, rests, and accidentals, with some notes grouped by slurs.

Handwritten musical notation for the third system, consisting of three staves. The notation includes various notes, rests, and accidentals, with some notes grouped by slurs.

Handwritten musical notation for the fourth system, consisting of two staves. The notation includes various notes, rests, and accidentals, with some notes grouped by slurs.

Two empty musical staves at the bottom of the page, consisting of five lines each.

Handwritten musical score for measures 1-10. The first system (measures 1-4) is in treble clef with a key signature of one flat. The second system (measures 5-8) is in bass clef. The third system (measures 9-10) is in treble clef. The notation includes various note values, rests, and dynamic markings such as 'p' and 'pp'.

Handwritten musical score for measures 11-15. The first system (measures 11-12) is in treble clef with a key signature of one flat. The second system (measures 13-14) is in bass clef. The third system (measures 15) is in treble clef. The notation includes various note values, rests, and dynamic markings such as 'p'.

Handwritten musical score for measures 16-18. The first system (measures 16-17) is in treble clef with a key signature of one flat. The second system (measures 18) is in bass clef. The third system (measures 19) is in treble clef. The notation includes various note values, rests, and dynamic markings such as 'p'.

Two empty musical staves at the bottom of the page.