

Tommaso  
GIORDANI

Six Quatuors  
op.8

Violoncelle

*Sei*  
QUARTETTI  
*per*  
*Due VIOLINI, VIOLA, e*  
VIOLONCELLO  
*Composti da*  
TOMMASO GIORDANI,  
Opera VIII.  
*Umilmente Dedicati*  
*alla*  
*Sua Eccellenza La Contessa di*  
TAFFÉ, &c, &c. *Pr. 10.0.*  
LONDON. Printed for W. Nisbet, the Corner of  
Lancaster Court Strand.  
Where may be had  
*Six Quartets by Bachon Pr. 10.0. Six by Madam Symon Pr. 10.0.*

*"Le Concert"*

# Quatuor Op.8 n°1

Violoncello

Tommaso GIORDANI

(1738-1806)

Moderato

1

mf *ten.* mf

9

*sf* *sf* *sf*

16

*sf* *sf* *sf* *sf*

21

*p* *f* *p* *f*

28

*Solo* *sf* *sf* *sf* *sf*

36

*p* *sf* *sf* *sf*

43

*sf* *sf* *sf* *sf*

50

*sf* *sf* *sf* *sf*

57

*sf* *sf* *sf* *sf*

63

*ten.* *p* *sf* *sf* *sf*

72

*sf* *p* *sf* *sf*

80 *Solo* *p*

88 **1** *f*

97

106 *f* *p* *f* *p* *f*

112 *p* *p* *mf*

120 *ten.* *sf* *p*

128 *f*

135 *ten.* *f*

143 *Solo* *p sf*

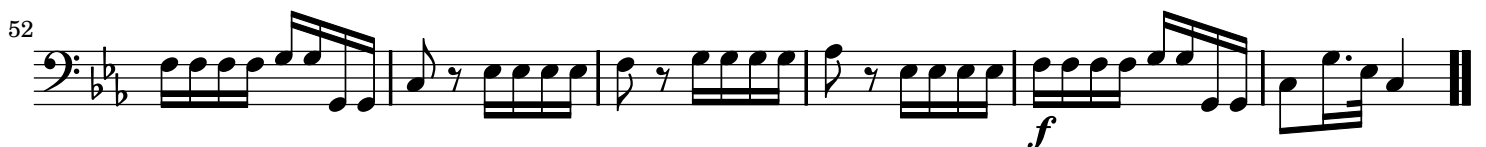
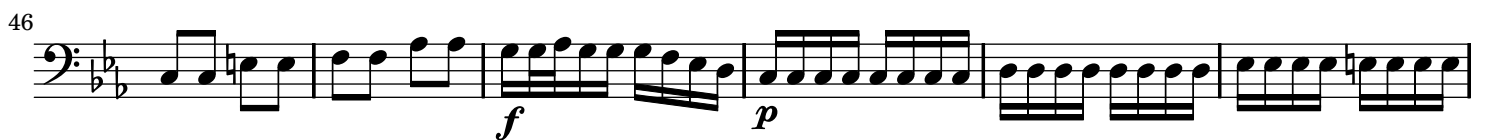
151 *f*

157 *p* *sf*

164 *p* *f*

171 *f* *p* *f*

## Largo



Minuetto

1 *f* *sf* *sf*

9 *sf* *sf* *Fine*

17 *p* *Solo* 1

26 *p* *ten.*

34 *Solo* *p*

42 *p* *ten.*

50 *p*

60 *Solo* *p* *pp* *D.C. il Primo Min.*  
*Senza Replica*

# Quatuor Op.8 n°2

Violoncello

Tommaso GIORDANI

(1738-1806)

Allegretto



69

*f p mf f p*

78

*f Solo poco f*

85

*f Solo*

93

*p*

101

*p Solo*

109

*p*

114

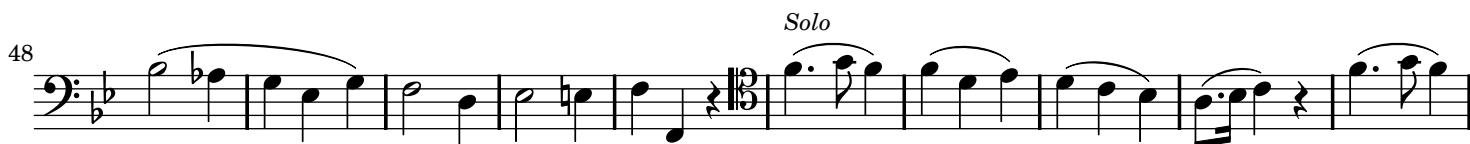
*p*

123

*p*

132

*p*

**Larghetto****Allegretto**



10 Musical staff 10: Bass clef, key signature of one flat. Measures 10-18. Dynamics: *sf*, *p*.

19 Musical staff 19: Bass clef, key signature of one flat. Measures 19-28. Dynamics: *p*.

29 Musical staff 29: Bass clef, key signature of one flat. Measures 29-38. Dynamics: *f*, *p*.

39 Musical staff 39: Bass clef, key signature of one flat. Measures 39-47. Dynamics: *p*.

48 Musical staff 48: Bass clef, key signature of one flat. Measures 48-57. Dynamics: *sf*, *p*.

58 Musical staff 58: Bass clef, key signature of one flat. Measures 58-66. Dynamics: *f*, Solo.

67 Musical staff 67: Bass clef, key signature of one flat. Measures 67-73. Dynamics: *p*, *tr*.

74 Musical staff 74: Bass clef, key signature of one flat. Measures 74-81. Dynamics: *p*, *sf*, *ten.*

82 Musical staff 82: Bass clef, key signature of one flat. Measures 82-88. Dynamics: *p*, *f*.

## Quatuor Op.8 n°3

Violoncello

Tommaso GIORDANI

(1738-1806)

**Spiritoso**

7

14

21

29

37

44

51

58

67

*sf*

*sf*

*sf*

*p*

*sf*

*sf*

*tr*

*ten.*

*sf*

*f*

*p*

*f*

*p*

*f*

*Solo*

*f*

*p*

*p*

*mf*

75 *Solo*  
*mf* *p* *sf*

81 *Solo* *ten.*  
*sf*

88  
*sf* *sf* *p*

95  
*f* *p* *f* *p*

103 *ten.*

112 *tr*  
*sf* *p* *sf* *p* *mf* *f*

119  
*mf* *f* *sf* *p*

126  
*mf* *f*

133  
*mf* *f* *sf* *f*

140

## Larghetto

1  
*p* *f* *p* *f* *p* *f* *tr*

11  
*f* *p* *f* *p* *f* *p* *ten.*

23  
*f* *Solo* *tr*

33  
*p* *ten.*

44  
*f* *p* *sf* *p* *f* *ten.*

## Allegretto

*p* *f*

13  
*p* *f* *p*

27

41  
*p* *f* *p*

55  
*f* *mf*

69

81

*f* *p* *ten.*

96

*p* *f* *p*

109

*f* *p* *Solo*

122

*f* *p* *f*

130

*tr*

139

*p* *ten.* 2

152

*ten.* *p* *f*

167

*p* *f*

181

## Quatuor Op.8 n°4

Violoncello

Tommaso GIORDANI

(1738-1806)

**Spiritoso**

10

18

29

39

46

51

58

68

77 *mf* *ten.* *p* *ten.*

89 *p* *ten.* *Solo* *sf*

102 *f* *p* *f* *ten.*

113 *p* *f* *p* *f*

123 *Solo* *tr*

128 *p*

135 *p* *tr*

146 *p* *ten.* *p*

159 *cresc.* *f* *p* *f* *p*

168 *f* *sf*

## Rondo - Allegretto Grazioso





67  Musical notation for measures 67-73. The piece is in 3/4 time with a key signature of one sharp (F#). The notation features a mix of eighth and sixteenth notes, often beamed together. A dynamic marking of *p* (piano) is placed at the end of the line.

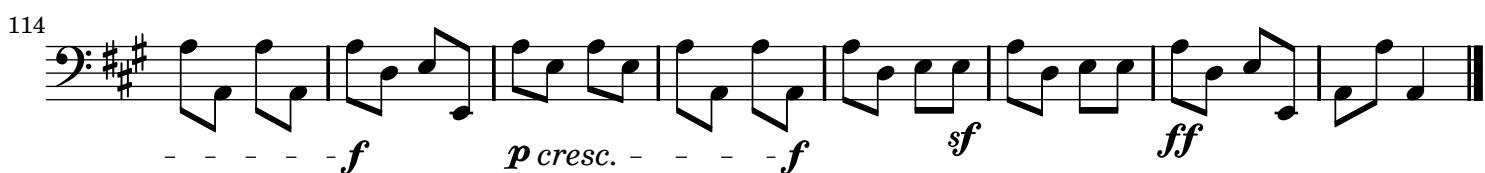
74  Musical notation for measures 74-81. The notation continues with eighth and sixteenth notes. A dynamic marking of *f* (forte) is present. A *Solo* instruction is written above the final measure of this system.

82  Musical notation for measures 82-88. The notation consists of continuous sixteenth-note passages.

89  Musical notation for measures 89-97. The notation includes a mix of eighth and sixteenth notes. Dynamic markings include *f* (forte) and *sf dim.* (sforzando then decrescendo), leading to a *p* (piano) marking at the end of the system.

98 **Majore**  Musical notation for measures 98-105. The key signature changes to two sharps (F# and C#), indicating a major key. The notation features eighth notes with rests. A dynamic marking of *p* (piano) is at the beginning.

106  Musical notation for measures 106-113. The notation continues with eighth notes. Dynamic markings include *f* (forte) and *p cresc.* (piano crescendo).

114  Musical notation for measures 114-121. The notation features eighth notes. Dynamic markings include *f* (forte), *p cresc.* (piano crescendo), and *ff* (fortissimo).

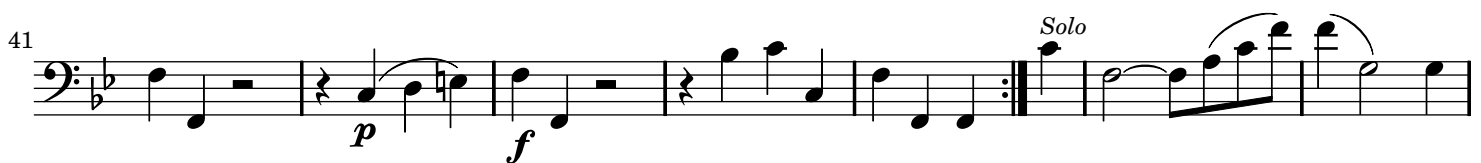
# Quatuor Op.8 n°5

Violoncello

Tommaso GIORDANI

(1738-1806)

## Allegro con Brio



55

*p*

62

*p cresc.*

70

*sf* *p*

78

*sf* *p*

85

92

*p* *f* *p*

99

*p* *f*

107

*p* *f*

Largo

*Sotto Voce*

7

*ten.*  
*sf* *p*

15

*sf* *p*

22

*p* *f* *p*

Tempo di Minuetto

*f* *p*

10

*f* *Fine* *Solo*  
*mf*

19

26

33

*p* *f*

41

*p* *f* *p* *f* *p* *Da Capo il Primo*

## Quatuor Op.8 n°6

Violoncello

Tommaso GIORDANI

(1738-1806)

## Allegro Maestoso

Musical score for Violoncello, Quatuor Op.8 n°6 by Tommaso Giordani. The score is in bass clef, 3/4 time, and B-flat major. It consists of 60 measures across 10 staves. Dynamics include *f*, *p*, *sf*, and *ten.* There are slurs and accents throughout.

Measures 1-8: *f* *p* *f* *p* *f* *p*

Measure 9: *p*

Measures 14-18: *sf* *sf* *sf* *p*

Measures 19-25: *ten.* *f* *p*

Measures 26-32: *f* *p* *ten.* *p*

Measure 33: *Solo* *p*

Measures 34-38: *sf* *p* *f*

Measures 39-43: *p* *sf*

Measures 44-49: *f* *f* *p*

Measures 50-56: *f* *ten.* *f*

Measures 57-60: *f* *p* *f* *p*

## Fugato

5

*f*

12

20

30

39

*f*

47

54

*p*

62

72

80

*p* *p*

88

96

*f*

102

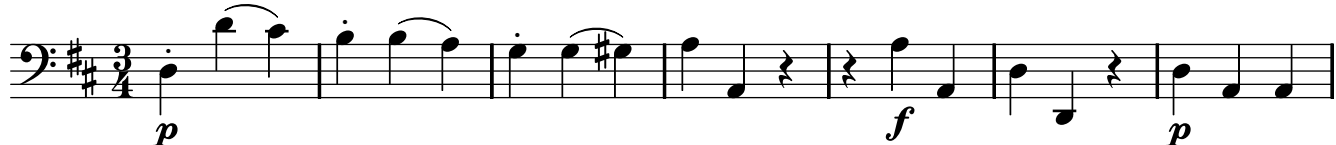
109 

119 

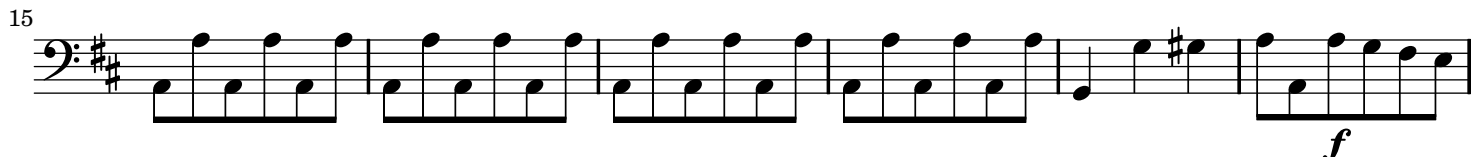
130 

138 

Minuetto Affettuoso



8 

15 

21 

Minore

28 

34 

40 

46 

Da Capo