

# RIGAUDON in D

for Trumpet & Organ

Score (01':38")

Georg Böhm (1661 - 1733)

Arr. Michel Rondeau

Vivace  $\text{♩} = 110$

Trumpet in C

Organ

This system contains the first four measures of the piece. The Trumpet in C part is written in a single staff with a treble clef, a key signature of two sharps (D major), and a common time signature. It begins with a quarter rest, followed by a half note D, and then a series of eighth notes: E, F, G, A, B, A, G, F, E, D. The Organ part consists of two staves (treble and bass clefs). The right hand plays chords and arpeggiated figures, while the left hand plays a simple bass line of quarter notes: D, E, F, G, A, B, A, G, F, E, D.

C Tpt.

Org.

This system contains measures 5 through 9. The C Trumpet part starts at measure 5 with a five-measure rest, then plays a quarter note D, followed by eighth notes E, F, G, A, B, A, G, F, E, D. Trills (tr) are indicated above the eighth notes G and F. The Organ part continues with similar accompaniment, featuring chords and arpeggiated figures in the right hand and a bass line in the left hand.

C Tpt.

Org.

This system contains measures 10 through 14. The C Trumpet part has five-measure rests in measures 10, 11, 12, 13, and 14. The Organ part continues with accompaniment, including a trill (tr) in the right hand in measure 13.

# RIGAUDON in D - Böhm - Score

2  
15

C Tpt.

Org.

15

tr

20

C Tpt.

Org.

20

25

C Tpt.

Org.

25

30

C Tpt.

Org.

Trio

30

tr

Trio

RIGAUDON in D - Böhm - Score

35

C Tpt.

Org.

C Tpt.

Org.

46

C Tpt.

Org.

52

C Tpt.

Org.

# RIGAUDON in D

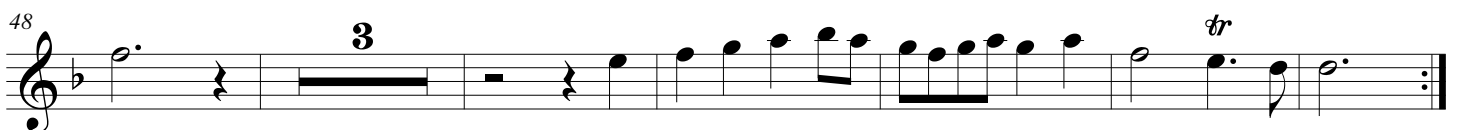
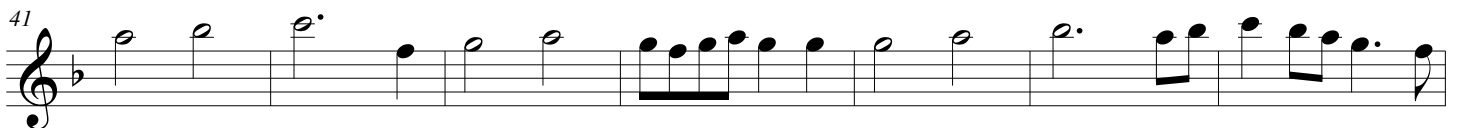
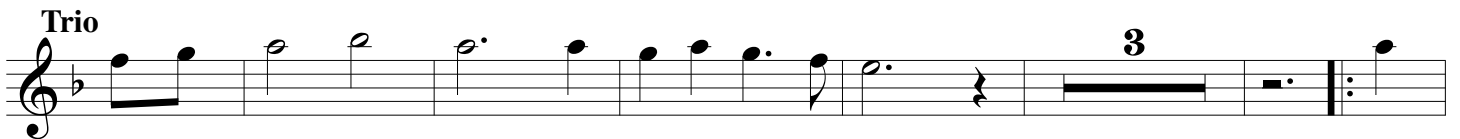
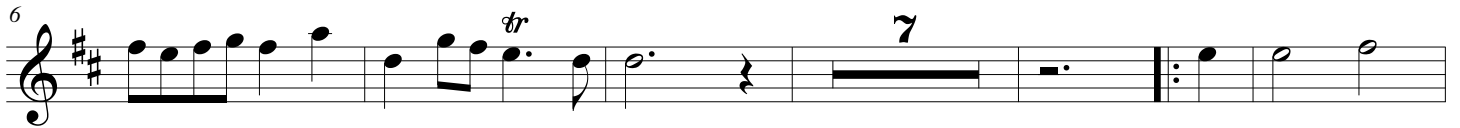
for Trumpet & Organ

## Trumpet in C

Georg Böhm (1661 - 1733)

Arr. Michel Rondeau

Vivace  $\text{♩} = 110$



# RIGAUDON in D

for Trumpet & Organ

## Trumpet in A

Georg Böhm (1661 - 1733)

Arr. Michel Rondeau

Vivace  $\text{♩} = 110$

6 *tr*

18

24 **3** *tr*

**Trio**

41 **3**

48 **3** *tr*

# RIGAUDON in D

for Trumpet & Organ

## Trumpet in D

Georg Böhm (1661 - 1733)

Arr. Michel Rondeau

Vivace  $\text{♩} = 110$

6

18

24

Trio

41

48

# RIGAUDON in D

for Trumpet & Organ

## Organ

Georg Böhm (1661 - 1733)

Arr. Michel Rondeau

Trumpet in C

Vivace ♩ = 110

Organ

This system contains the first four measures of the piece. The Trumpet in C part is written in a single staff with a treble clef, a key signature of two sharps (D major), and a common time signature. The tempo is marked 'Vivace' with a quarter note equal to 110 beats per minute. The Organ part is written in two staves (treble and bass clefs) with a key signature of two sharps. The organ accompaniment consists of chords and single notes in both hands.

C Tpt.

5

tr

Org.

This system contains measures 5 through 9. The C Trumpet part begins with a measure rest, then enters in measure 5 with a melodic line featuring trills (tr) in measures 5 and 7. The Organ part continues with accompaniment in both hands, with some changes in texture and dynamics.

C Tpt.

10

10

tr

Org.

This system contains measures 10 through 14. The C Trumpet part has a measure rest for the first four measures of this system. The Organ part features a more active accompaniment, including sixteenth-note patterns in the right hand and trills (tr) in the left hand in measure 13.

# RIGAUDON in D - Böhm - Organ

2  
15

C Tpt.

Org.

15

tr

20

C Tpt.

Org.

25

C Tpt.

Org.

30

C Tpt.

Org.

Trio



RIGAUDON in D - Böhm - Organ

C Tpt. <sup>35</sup>

Org. <sup>35</sup>

This system contains measures 35 through 45. The C Tpt. part begins with a melodic line of eighth notes in measure 35, followed by rests. The Organ part features a complex texture with chords in the right hand and a bass line in the left hand.

C Tpt.

Org.

This system contains measures 46 through 51. The C Tpt. part has a melodic line with some grace notes. The Organ part continues with a similar texture of chords and a bass line.

C Tpt. <sup>46</sup>

Org. <sup>46</sup>

This system contains measures 52 through 61. The C Tpt. part has a melodic line with a trill in measure 61. The Organ part features a more active right hand with some sixteenth-note passages.

C Tpt. <sup>52</sup>

Org. <sup>52</sup>

This system contains measures 62 through 67, ending with a double bar line. The C Tpt. part has a melodic line with a trill in measure 67. The Organ part concludes with a final chord in the right hand and a bass line.