

Sonata FaWV N:d1

a 2 Oboi, Fagotto e Basso

Hautbois 1

J. F. Fasch (1688-1758)

[1.] Andante

Musical notation for the first staff, measures 1-3. It begins with a treble clef, a key signature of one flat (B-flat), and a common time signature (C). The first measure contains a quarter rest followed by an eighth rest and an eighth note. The second measure features a quarter note with a sharp sign above it, followed by an eighth rest and an eighth note. The third measure contains a half note. Dynamics markings *p* and *f* are placed below the staff.

Musical notation for the second staff, measures 4-6. It continues with eighth and quarter notes. A measure rest is present at the end of the staff.

Musical notation for the third staff, measures 7-9. It features a sequence of eighth and quarter notes. A measure rest is present at the end of the staff. The dynamic marking *p* is located at the bottom right.

Musical notation for the fourth staff, measures 10-13. It continues with eighth and quarter notes. A measure rest is present at the end of the staff.

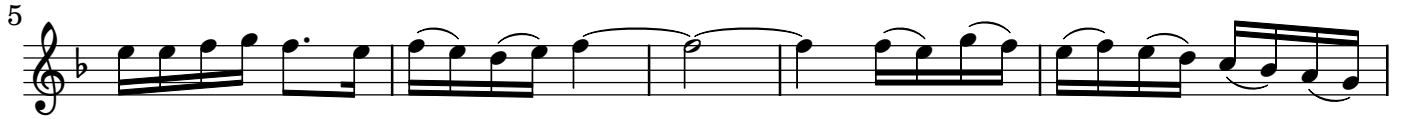
Musical notation for the fifth staff, measures 14-17. It includes a trill marked *tr* over a note. A measure rest is present at the end of the staff.

Musical notation for the sixth staff, measures 18-20. It features eighth and quarter notes. A measure rest is present at the end of the staff. The dynamic marking *p* is located at the bottom right.

Musical notation for the seventh staff, measures 21-23. It starts with a quarter rest, followed by eighth and quarter notes. Dynamics markings *f* and *p* are placed below the staff.

Musical notation for the eighth staff, measures 24-26. It features eighth and quarter notes. A measure rest is present at the end of the staff. The dynamic marking *f* is located at the bottom right.

[2.] un poco Allegro



45 *tr*
p pp f p

50
f p f

56

60

[3.] Largo

8
p

14 *tr*

20

27
p *tr*

[4.] Allegro

8

18

26

37

45

53

61

68

75

p *f* *f* *tr* *p* *f*