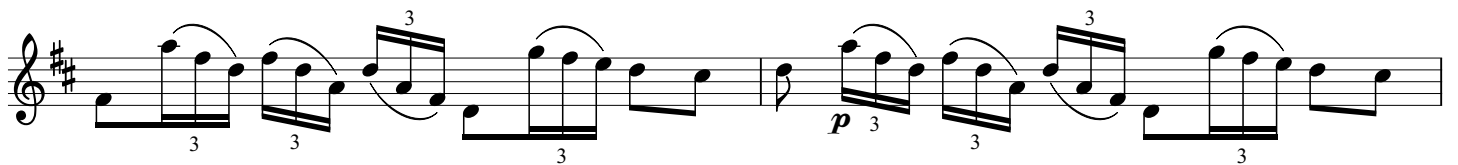
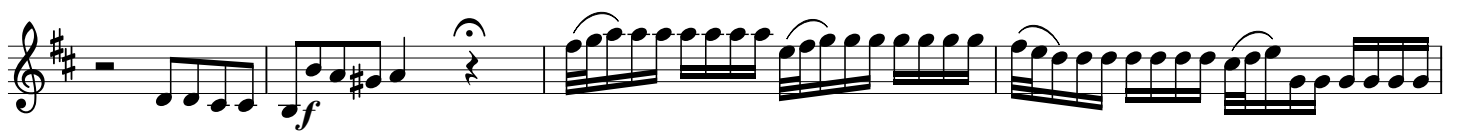


*Allegro*

Violin II

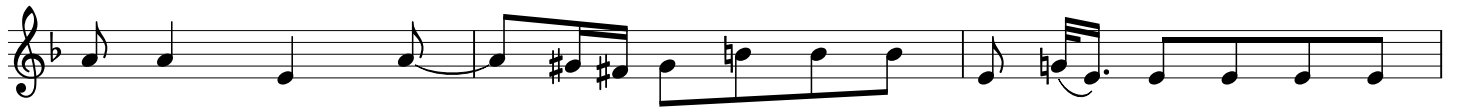
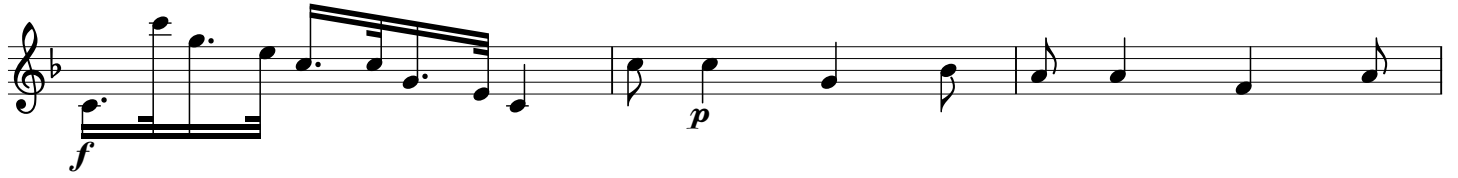
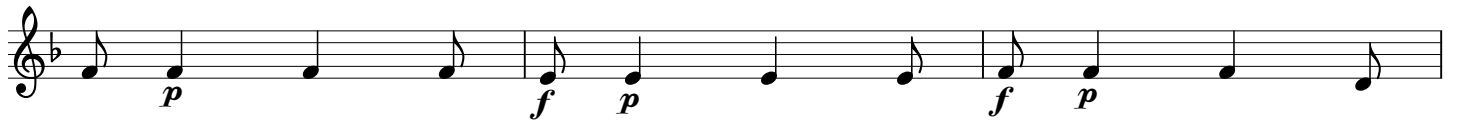
The musical score for Violin II is written in treble clef with a key signature of two sharps (F# and C#) and a common time signature (C). The tempo is marked *Allegro*. The score consists of ten staves of music. It begins with a series of eighth and sixteenth notes, followed by several triplet passages. Dynamics include *poco f*, *f*, *p*, and *f*. Trills (tr) are used in several measures. The piece concludes with a final triplet and a whole note chord.

This page of musical notation is for a piano piece in D major, indicated by two sharps (F# and C#) in the key signature. The music is written on a single staff in treble clef. It begins with a series of eighth notes, followed by a more complex rhythmic pattern involving eighth and sixteenth notes. The piece features several triplets, marked with a '3' below the notes. Dynamic markings include *f* (forte), *p* (piano), and *tr* (trill). The notation includes various articulations such as slurs, accents, and fermatas. The piece concludes with a final cadence.



Violin II *Andante*

The musical score for Violin II is written in a single melodic line on a treble clef staff. The tempo is marked *Andante*. The key signature has one flat (B-flat) and the time signature is 3/4. The piece features dynamic markings of forte (*f*) and piano (*p*), and includes trills (*tr*). The music is written in a single melodic line on a treble clef staff.



*Presto*

Violin II

The musical score for Violin II is written in treble clef with a key signature of two sharps (F# and C#) and a 2/4 time signature. The tempo is marked *Presto*. The score consists of 13 staves of music. Dynamics include *f* (forte), *p* (piano), *pp* (pianissimo), and *tr* (trill). The piece features a variety of rhythmic patterns, including sixteenth-note runs, eighth-note patterns, and quarter-note passages. There are also trills and triplets indicated. The notation includes slurs, accents, and dynamic markings throughout.

This page of musical notation is for a piece in D major, consisting of 13 staves. The notation includes various rhythmic patterns, dynamics (p, f), and articulations (tr). The first staff begins with a treble clef, a key signature of two sharps (F# and C#), and a 2/4 time signature. The music features a variety of note values, including eighth and sixteenth notes, and rests. Dynamics are indicated by 'p' (piano) and 'f' (forte). Trills are marked with 'tr'. The notation is arranged in a single system with 13 staves.

A musical score for a single melodic line in G major, consisting of 14 staves. The score includes various dynamics and articulations:

- Staff 1: *p* (piano), *f* (forte)
- Staff 2: *p* (piano)
- Staff 3: *poco f* (poco forte), *p* (piano)
- Staff 4: *f* (forte), *p* (piano)
- Staff 5: *f* (forte), *p* (piano)
- Staff 6: *f* (forte)
- Staff 7: *f* (forte)
- Staff 8: *f* (forte)
- Staff 9: *f* (forte)
- Staff 10: *f* (forte)
- Staff 11: *f* (forte)
- Staff 12: *f* (forte), *tr* (trill)
- Staff 13: *p* (piano), *f* (forte)