

SONATA

Johann Jacob Walther

Violine

SONATA

Violine

Johann Jacob Walther

[In freiem Vortrag]

Musical notation for the first section of the sonata, marked "In freiem Vortrag". It consists of four staves of music in treble clef with a key signature of one sharp (F#). The first staff begins with a half note G4. The second and third staves contain complex sixteenth-note passages with many accidentals. The fourth staff ends with a measure containing a fermata and the number "5".

[Andante]

Musical notation for the second section of the sonata, marked "Andante". It consists of two staves of music in treble clef with a key signature of one sharp (F#). The music features a series of triplet eighth notes with various accidentals.

[Allegro, ma non troppo]

Musical notation for the third section of the sonata, marked "Allegro, ma non troppo". It consists of six staves of music in treble clef with a key signature of one sharp (F#). The music is characterized by rapid sixteenth-note passages. The second staff has a measure with the number "10" above it. The sixth staff ends with a measure containing a fermata and the number "7".

Violine

[Moderato]

Musical score for Violin, Moderato section, measures 1-15. The score is written on five staves. The first staff begins with a treble clef, a key signature of one sharp (F#), and a 3/4 time signature. The tempo is marked [Moderato]. The music consists of a series of eighth and sixteenth notes, with some rests. A measure rest is indicated by a '7' above the staff. A fermata is placed over a note in the second staff. The number '15' is written above the end of the second staff.

[Andante]

Musical score for Violin, Andante section, measures 16-35. The score is written on five staves. The first staff begins with a treble clef, a key signature of one sharp (F#), and a 4/4 time signature. The tempo is marked [Andante]. The music consists of dotted half notes and quarter notes. A measure rest is indicated by a '2.' above the staff. The number '20' is written above the end of the second staff. The number '25' is written above the start of the fourth staff. The number '30' is written above the start of the fifth staff. The number '35' is written above the start of the sixth staff. The piece ends with a double bar line and a common time signature 'C'.

[Andante]

40

[Allegretto]

45

50

55

60

65

SONATA

Johann Jacob Walther

Violoncello

SONATA

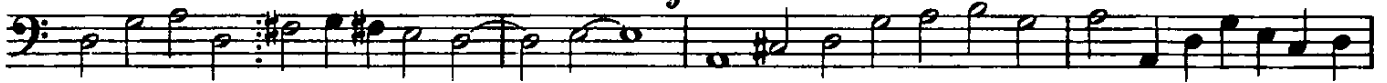
Violoncello

Johann Jacob Walther

[In freiem Vortrag]



5 [Andante]



[Allegro, ma non troppo]

10



[Moderato]

15



[Andante]



20



25



Violoncello



[Andante]

