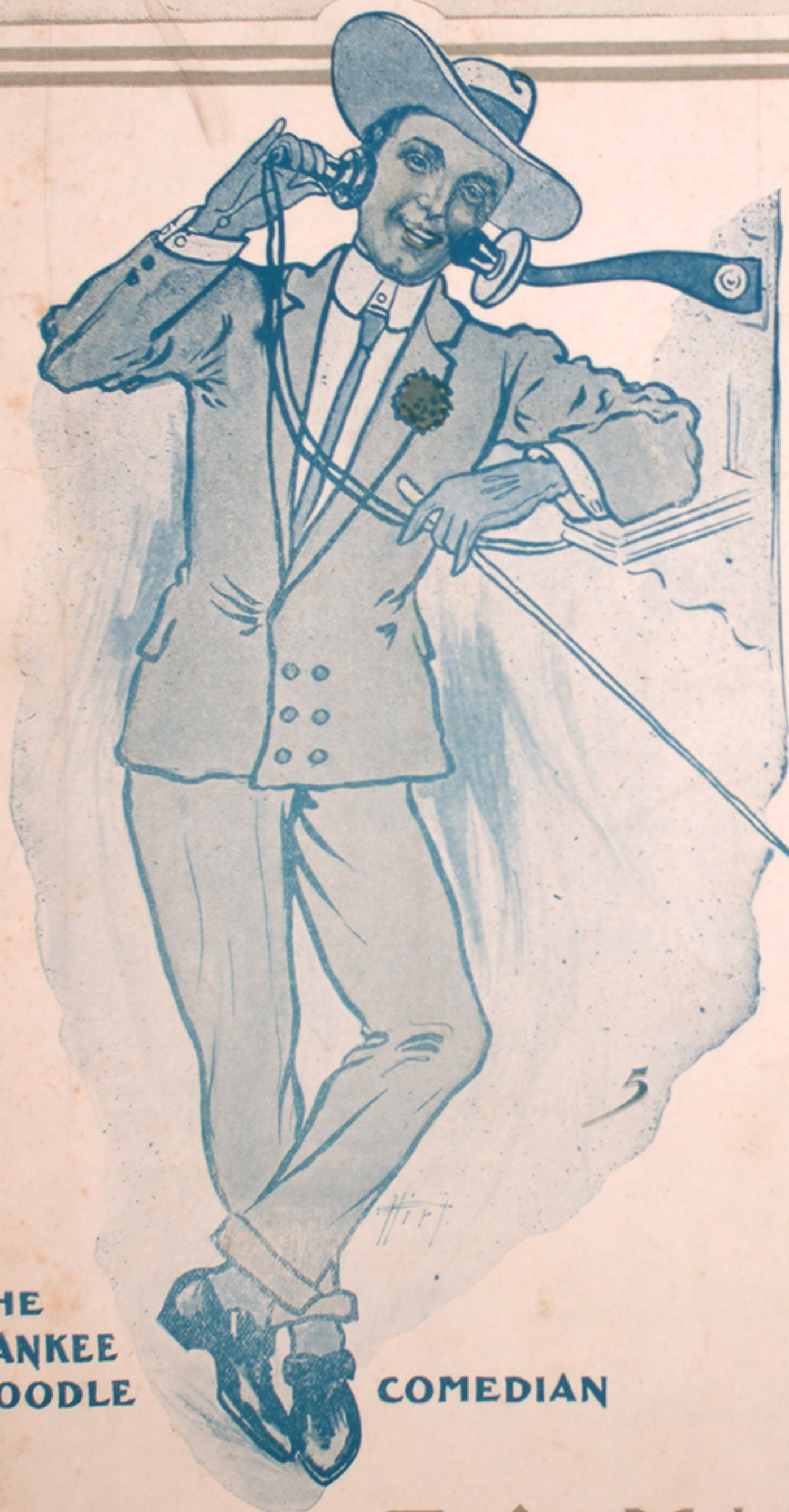


GIVE MY REGARDS TO BROADWAY



ONE OF THE
MUSICAL HITS ^{from}
GEO. M. COHAN'S
LATEST PLAY

"LITTLE JOHNNY JONES"

Words &
Music by

GEO. M. COHAN



THE
YANKEE
DOODLE

COMEDIAN

F. A. MILLS
48 WEST 29TH ST.
NEW YORK

Public Performance Prohibited without Permission.

"Give My Regards To Broadway."

GEO. M. COHAN.

Tempo di Marcia.

mf

The piano introduction is in 2/4 time, marked *mf*. It features a rhythmic melody in the right hand and a supporting bass line in the left hand. The key signature has one flat (B-flat).

Did you ev - er
Say hel - lo to

p

The first system of the vocal and piano accompaniment. The vocal line begins with the lyrics "Did you ev - er Say hel - lo to". The piano accompaniment is marked *p* and continues the rhythmic pattern from the introduction.

see two Yan - kees part up - on a for - eign
dear old Con - ey Isle, if there you chance to

The second system of the vocal and piano accompaniment. The vocal line continues with the lyrics "see two Yan - kees part up - on a for - eign dear old Con - ey Isle, if there you chance to". The piano accompaniment continues with the same rhythmic accompaniment.

shore, _____ When the good ship's just a - - bout to
be, _____ When you're at the Wal - dorf have a

The third system of the vocal and piano accompaniment. The vocal line continues with the lyrics "shore, _____ When the good ship's just a - - bout to be, _____ When you're at the Wal - dorf have a". The piano accompaniment continues with the same rhythmic accompaniment.

Copyright 1904 by F. A. Mills 48 W. 29 th St. N.Y.
English Copyright Secured.

start for Old New York once more? With
 smile and charge it up to me; Men-tion

tear - dimmed eye they say good - - bye, they're friends with
 my name ev - 'ry place you go, as 'round the

out a doubt; When the man on the pier
 town you roam; Wish you'd call on my gal, Now re -

Shouts, "Let them clear," as the ship strikes out.
 mem - ber, old pal, when you get back home.

Give my regards to Broadway. 4

CHORUS.

Give my re - gards to Broad - way, re -

p-f

Detailed description: This system contains the first two lines of music. The top line is a vocal melody in 2/4 time, starting with a quarter note G4, followed by quarter notes A4, B4, and C5, then a half note B4. The lyrics are "Give my re - gards to Broad - way, re -". The piano accompaniment consists of a right hand with chords and a left hand with a simple bass line. A dynamic marking of *p-f* is placed below the piano part.

mem - ber me to Her - ald Square, _____

Detailed description: This system contains the third and fourth lines of music. The vocal line continues with quarter notes D5, E5, and F5, then a half note G5. The lyrics are "mem - ber me to Her - ald Square, _____". The piano accompaniment continues with chords and a bass line.

Tell all the gang at For - ty - Sec - ond street, that

Detailed description: This system contains the fifth and sixth lines of music. The vocal line has quarter notes G4, A4, B4, and C5, then a half note B4. The lyrics are "Tell all the gang at For - ty - Sec - ond street, that". The piano accompaniment continues.

I will soon be there; _____

Detailed description: This system contains the seventh and eighth lines of music. The vocal line has a half note G4, then a half note A4, and finally a half note B4. The lyrics are "I will soon be there; _____". The piano accompaniment concludes the system.

Whis - per of how I'm yearn - ing, To

min - gle with the old time throng, Give my re -

gards to old Broad - way and say that I'll be

there e'er long. long.

Give my regards to Broadway. 4