

11  
72  
1807/1808/196.4



VIII SONATES

À

Deux Violons  
& Basse-Continue.

*Composées  
par*

C. A. CAMPIONI,

*Musicien de La Chambre de  
Sa Majesté Royale de Sardaigne &c. &c. &c.*

OEUVRE QUATRIEME.

---

À AMSTERDAM chez J. J. HUMMEL,  
*Marchand & Imprimeur de Musique.*





# SECONDO.

## SONATA I

*Adagio Sostenuto.*

*Dolce*

*F* *P* *F* *P* *F* *P* *F*

*F* *P* *F* *P* *F* *P* *F*

*P*

This section contains the first movement of the sonata, marked *Adagio Sostenuto* and *Dolce*. It consists of ten staves of music in G major, 2/4 time. The piece begins with a treble clef, a key signature of one sharp (F#), and a common time signature (C). The first staff starts with a treble clef, a key signature of one sharp, and a common time signature. The music features a variety of rhythmic patterns, including eighth and sixteenth notes, and rests. Dynamics are indicated by *F* (forte) and *P* (piano). The piece concludes with a double bar line and repeat signs.

*Allegro con Spirito.*

*P* *F* *P* *F* *P* *F* *P* *F*

*P* *F* *P* *F* *P* *F* *P* *F*

*P* *F* *P* *F* *P* *F* *P* *F*

*P* *F* *P* *F* *P* *F* *P* *F*

*Pianifs.*

This section contains the second movement of the sonata, marked *Allegro con Spirito*. It consists of four staves of music in G major, 2/4 time. The piece begins with a treble clef, a key signature of one sharp, and a 2/4 time signature. The music features a variety of rhythmic patterns, including eighth and sixteenth notes, and rests. Dynamics are indicated by *P* (piano) and *F* (forte). The piece concludes with a double bar line and repeat signs.

# S E C O N D O .

Musical score for the first section of the piece, consisting of ten staves of music in G major. The notation includes various dynamics such as *P* (piano) and *F* (forte), and articulations like *tr* (trills) and *w* (accents). The music features complex rhythmic patterns and melodic lines.

*Pianifs.*

Musical score for the second section, *Menuet non Presto*, consisting of ten staves of music in G major with a 3/4 time signature. The notation includes various dynamics such as *P* (piano) and *F* (forte), and articulations like *tr* (trills) and *w* (accents). The music features complex rhythmic patterns and melodic lines.

# SECONDO.

## SONATA II

*Adagio.*

*Allegro Moderato.*

# SECONDO.

The first system of the 'SECONDO' section consists of five staves of music. The first staff begins with a treble clef, a key signature of one sharp (F#), and a 7/8 time signature. The music is written in a single melodic line. The second staff includes dynamic markings 'P' (piano) and 'F' (forte) and contains a triplet of eighth notes. The third staff features a trill marked with 'tr'. The fourth staff includes a 'P' marking and a triplet. The fifth staff concludes the system with a double bar line and repeat dots.

The second system of the 'SECONDO' section consists of one staff of music. It begins with a treble clef, a key signature of one sharp (F#), and a 3/4 time signature. The music is written in a single melodic line. It includes a triplet of eighth notes and a first ending bracket marked with '1'.

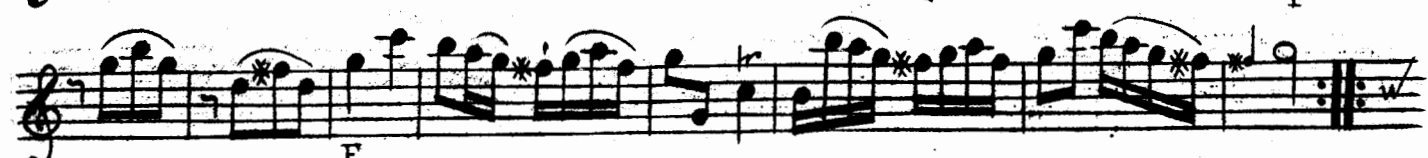
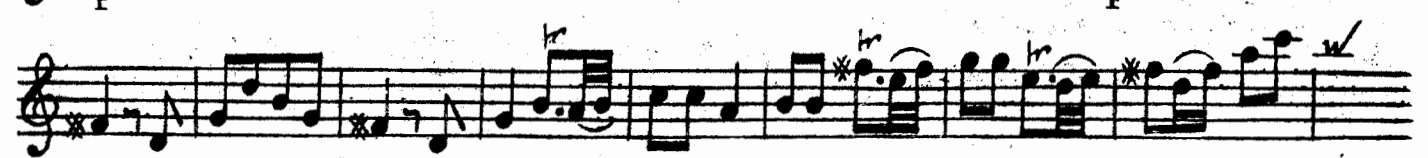

## *Menuet.*

The 'Menuet' section consists of seven staves of music. The first staff begins with a treble clef, a key signature of one sharp (F#), and a 3/4 time signature. The music is written in a single melodic line. The second staff includes a trill marked with 'tr'. The third staff includes a first ending bracket marked with '1'. The fourth staff includes a trill marked with 'tr'. The fifth staff includes a triplet of eighth notes and a second ending bracket marked with '2'. The sixth staff includes a trill marked with 'tr'. The seventh staff concludes the section with a double bar line and repeat dots.

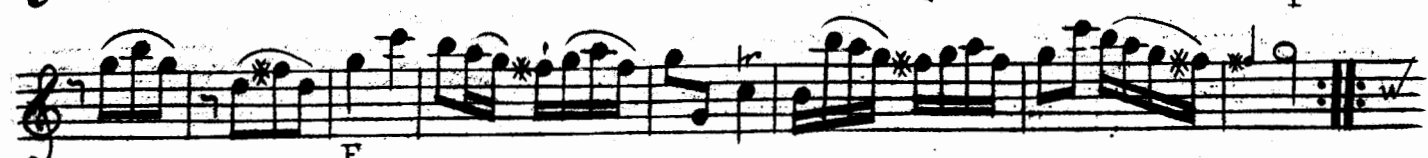
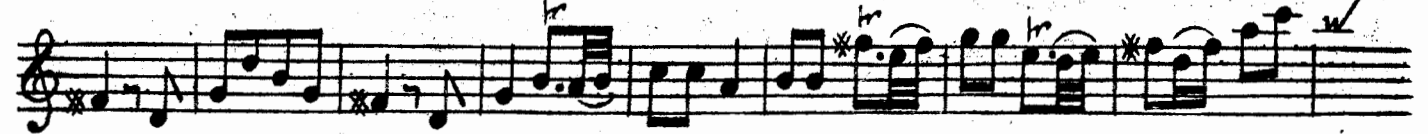
# SECONDO.

## SONATA III

*Adagio.*



### *Allegro.*





# SECONDO.

The first section of the Minuet consists of five staves of music. The first staff begins with a treble clef and a 7/8 time signature. The second staff includes dynamic markings 'P' and 'F'. The third staff features a 'Dor' marking above a note. The fourth staff ends with a double bar line and repeat dots. The fifth staff is marked with a 3/8 time signature and includes a triplet marking.

## *Minuet.*

The second section of the Minuet consists of seven staves of music. The first staff has a 'P' dynamic marking. The second staff has 'F' and 'P' markings. The third staff has an 'F' marking. The fourth staff has a 'P' marking. The fifth staff has 'F' and 'P' markings. The sixth staff has a 'P' marking. The seventh staff has 'F', 'P', and 'F' markings and ends with a double bar line and repeat dots.

S E C O N D O .

SONATA IV

*Adagio.*

*Allegro.*

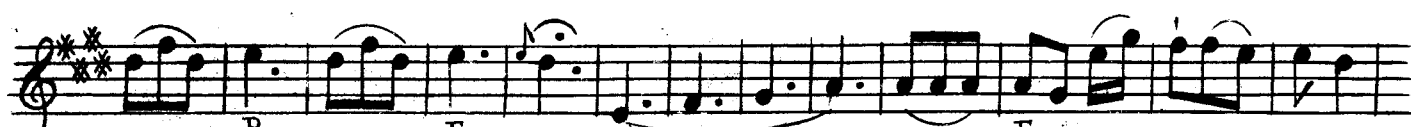
# SECONDO.



Smorz.



*Menuetto Comodico.*



# SECONDO.

## SONATA V

*Adagio.*

*Allegro.*

S E C O N D O .

The first section of the piece consists of six staves of music. The notation includes various rhythmic values, accidentals, and dynamic markings. The first staff begins with a treble clef and a key signature of one flat. The second staff has dynamic markings 'P' and 'F'. The third staff has a 'F' marking. The fourth staff has 'P' and 'F' markings. The fifth staff has a 'P' marking. The sixth staff concludes with a double bar line.

*Menuet.*

The second section, titled 'Menuet.', consists of six staves of music. It begins with a 3/4 time signature. The notation includes various rhythmic values, accidentals, and dynamic markings. The first staff has a 'P' marking. The second staff has 'F' and 'P' markings. The third staff has a 'F' marking. The fourth staff has 'P' and 'Cres.' markings. The fifth staff has 'F' and 'P' markings. The sixth staff concludes with a double bar line.

# SECONDO.

## SONATA VI

*Adagio Sempre piano.*

The first movement is in 3/4 time. It begins with a treble clef and a key signature of one flat. The tempo is Adagio and the dynamics are Sempre piano. The score consists of ten staves of music. The first staff starts with a first finger fingering (1) and a slur over a series of eighth notes. The second staff continues the melodic line with slurs and ties. The third staff features a trill (tr) and a repeat sign. The fourth staff has a first finger fingering (1) and a slur. The fifth staff includes a triplet (3) and a trill (tr). The sixth staff also features a triplet (3) and a trill (tr). The seventh staff concludes the first movement with a double bar line and repeat dots.

The second movement is in 2/4 time. It begins with a treble clef and a key signature of one flat. The tempo is Allegro. The score consists of ten staves of music. The first staff starts with a second finger fingering (2) and a slur. The second staff continues with slurs and ties. The third staff features a trill (tr) and a slur. The fourth staff includes a triplet (3) and a trill (tr). The fifth staff also features a triplet (3) and a trill (tr). The sixth staff concludes the second movement with a double bar line and repeat dots. The seventh staff continues with slurs and ties. The eighth staff features a trill (tr) and a slur. The ninth staff includes a triplet (3) and a trill (tr). The tenth staff concludes the second movement with a double bar line and repeat dots.

# SECONDO.

The first system of the 'SECONDO' section consists of five staves of treble clef music. The first staff begins with a treble clef, a key signature of one flat (B-flat), and a 3/4 time signature. The music features a series of eighth and sixteenth notes, often grouped in pairs or fours, with various articulations such as slurs and accents. The second and third staves continue this rhythmic pattern with increasing complexity. The fourth staff includes a double bar line with repeat dots, indicating a first ending. The fifth staff concludes the system with a final double bar line.

*Menuet.*

The second system, titled 'Menuet.', begins with a treble clef, a key signature of one flat, and a 3/4 time signature. The first staff contains a triplet of eighth notes. The music is characterized by a mix of eighth and sixteenth notes, often with slurs and accents. Dynamic markings 'P' (piano) and 'F' (forte) are used throughout. The second staff includes a first ending marked with a double bar line and repeat dots. The third staff features a triplet of eighth notes and a 'P' marking. The fourth staff has a 'P' marking. The fifth staff includes a triplet of eighth notes and 'F' markings. The sixth staff has a 'P' marking. The seventh staff includes a triplet of eighth notes and 'F' markings. The eighth staff has a 'P' marking. The ninth staff includes a triplet of eighth notes and 'F' markings. The tenth staff concludes the system with a final double bar line.

# S E C O N D O .

## SONATA VII

*Adagio.*

*Allegretto.*

*Dolce*



# SECONDO.

Musical score for the first section, consisting of ten staves. The key signature is G major (one sharp). The music features various ornaments (trills, mordents) and dynamics. The word "Dolce" appears below the second and eighth staves. The first staff ends with a fermata and the letter "F". The section concludes with a double bar line and repeat signs.

Musical score for the second section, titled "Menuet". It consists of ten staves. The key signature is G major (one sharp) and the time signature is 3/4. The music includes various ornaments and dynamics. The word "Menuet." is written below the first staff. Dynamics "P" (piano) and "F" (forte) are indicated below the fourth, fifth, and sixth staves. The section concludes with a double bar line and repeat signs.

SECONDO.

SONATA VII

Adagio.

Poc. F P Poc. F

P F P

Poc. F

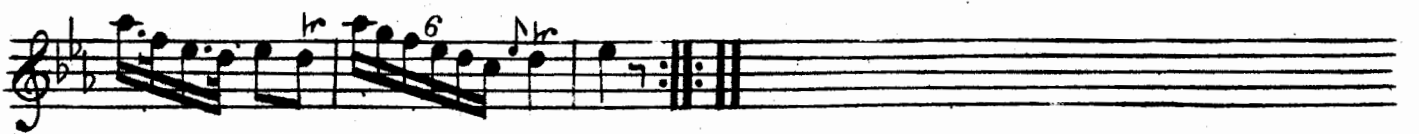
P Poc. F F

Allegro.

F

P F

# SECONDO.



## *Menuet.*



FINE