

9618.  
17

BASSVS  
OPERA NOVA DE BALLI

Di Francesco Bendusi *A quattro Accommodati da cantare & sonare  
d'ogni sorte de Stromenti Nouamente dati in luce.*

A QUATTRO



VOCI

*In Venetia Appresso di  
Antonio Gardane.*

1553

G

Bayer. Staats-  
Bibliothek  
München

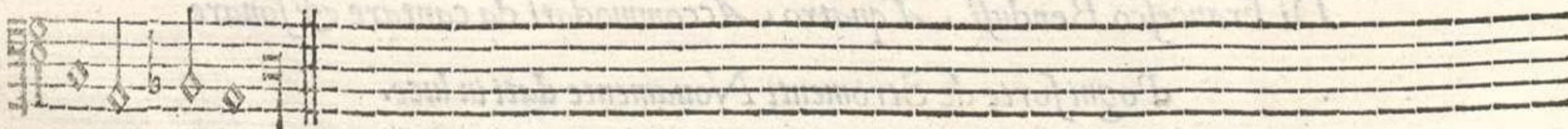
BASSVS

I

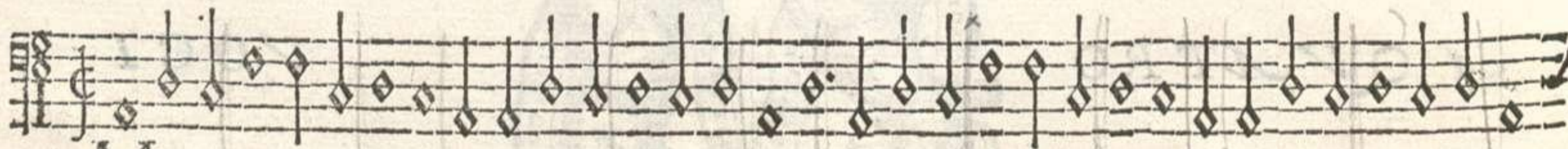
461



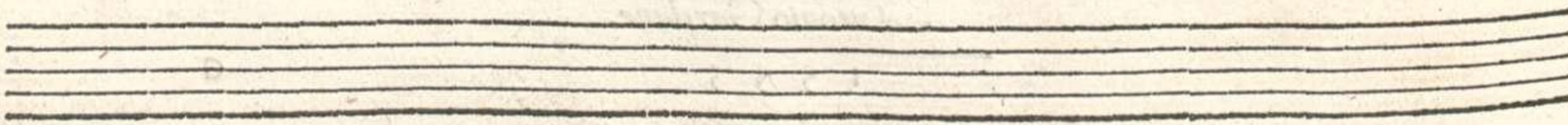
*Aff' e mezzo ditto il Romano*



462



*Moschetta*



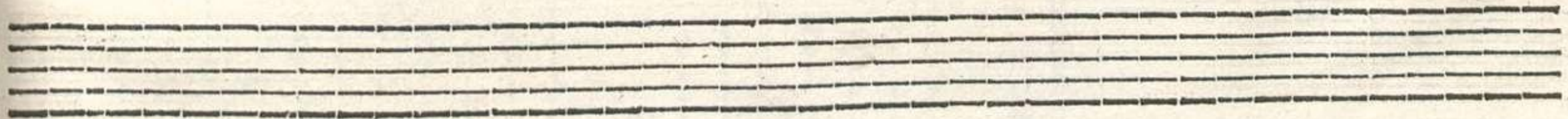
24.



*Esfiderata*

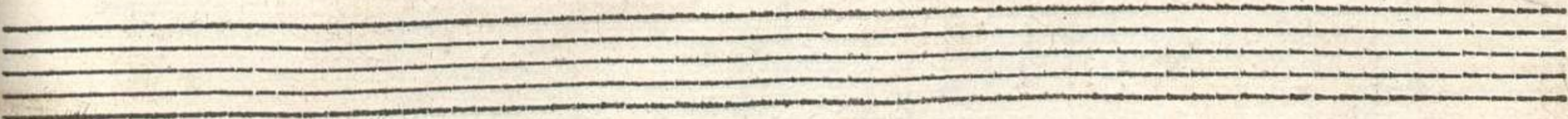
2

463



464

*Pietoso*

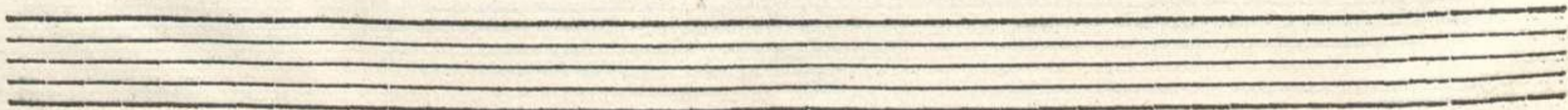


Gij

465

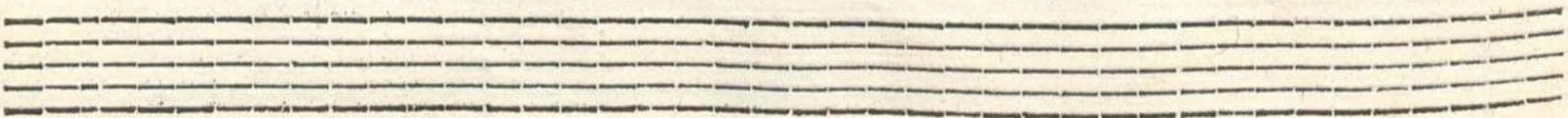
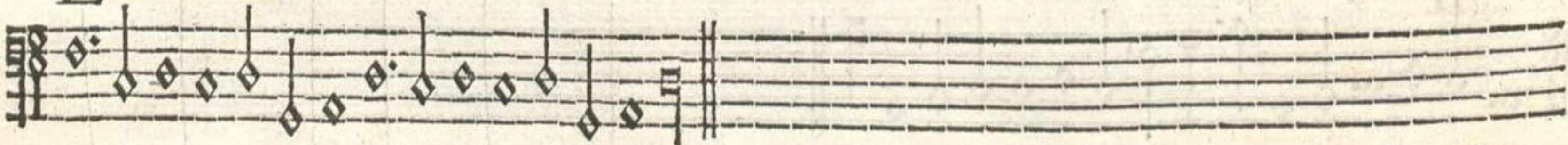
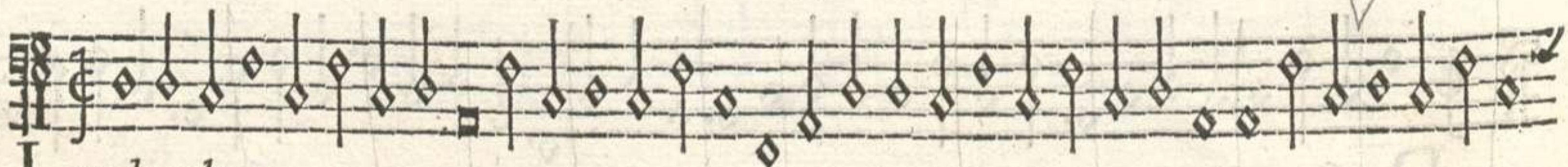


Peranza



466

L A mala uecchia





Handwritten musical notation on a five-line staff. The notes are diamond-shaped with stems pointing downwards. A treble clef is on the left. A number '4' is written above the staff. The piece concludes with a double bar line and a fermata.

*L stocco*

Handwritten musical notation on a five-line staff, continuing the piece from the first system. It ends with a double bar line and a fermata.

Handwritten musical notation on a five-line staff, continuing the piece. It ends with a double bar line and a fermata.

Four empty five-line musical staves.

Handwritten musical notation on a five-line staff. The notes are diamond-shaped with stems pointing downwards. A treble clef is on the left. The piece concludes with a double bar line and a fermata.

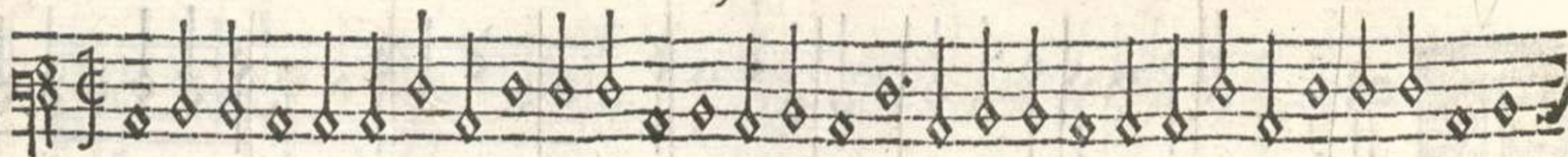
*D oi stanchi*

Handwritten musical notation on a five-line staff, continuing the piece. It ends with a double bar line and a fermata.

467

468

469



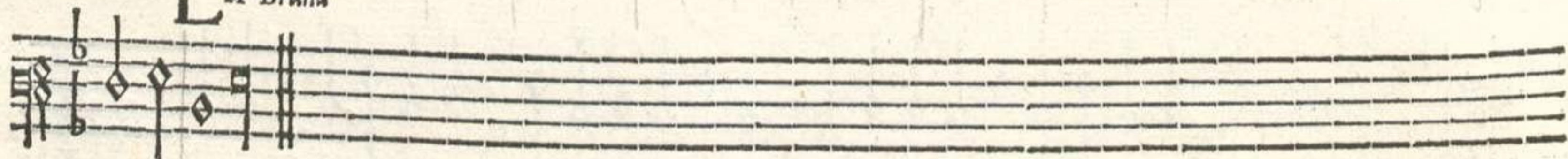
A falilela



470



L A Bruna



471



E Doue uastu o bon solda

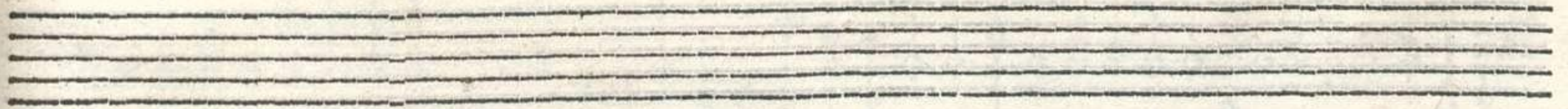




Hi non ha martello

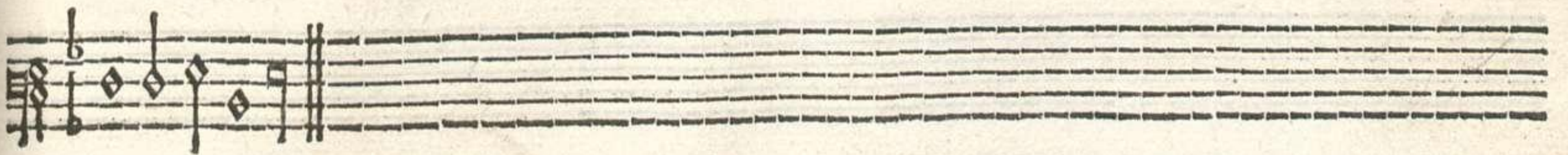
elle foris

472



Incognita

473



4 7 4



Musical staff with notes and stems, starting with a treble clef and a common time signature.

*Ella foresta*

Musical staff with notes and stems, continuing the piece.

Empty musical staff lines.

4 7 5

**G** *Alante*

Musical staff with notes and stems, starting with a treble clef and a common time signature.

Musical staff with notes and stems, continuing the piece.

Empty musical staff lines.





476

vsta

477

**A** *nimoso*

478

**C** *ortesa Padoana*

479

**B**



*Andera*



480

**G** Gioia



481

**L** A Giouenetta





Handwritten musical notation on a five-line staff, featuring diamond-shaped notes and stems. A red '482' is written in the right margin.

*L* ben ti uegna

Handwritten musical notation on a five-line staff, featuring diamond-shaped notes and stems.

Handwritten musical notation on a five-line staff, featuring diamond-shaped notes and stems.

Empty five-line musical staff.

Handwritten musical notation on a five-line staff, featuring diamond-shaped notes and stems. A red '483' is written in the right margin.

*P*Ass<sup>2</sup>e mezo ditto il compasso

Handwritten musical notation on a five-line staff, featuring diamond-shaped notes and stems.

272248

11

BASSVS

484



Musical staff with notes and stems, starting with a treble clef and a common time signature.

Iolla

A short musical staff with notes and stems, ending with a double bar line.

An empty musical staff.

An empty musical staff.

An empty musical staff.

An empty musical staff.



2810

A.W.