

Violin 1

Quarta & Ultima Parte: Corrente

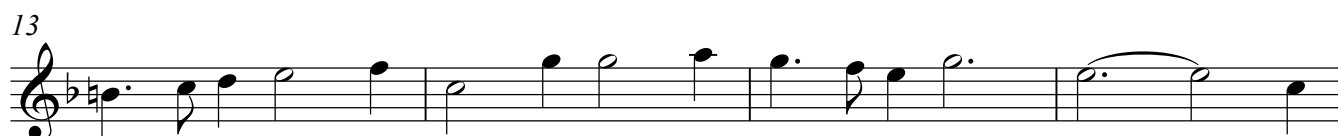
Lorenzo Allegri (c1573-1648)



Violin 2

Quarta & Ultima Parte: Corrente

Lorenzo Allegri (c1573-1648)



Violin 3

Quarta & Ultima Parte: Corrente

Lorenzo Allegri (c1573-1648)

5

9

14

18

1.

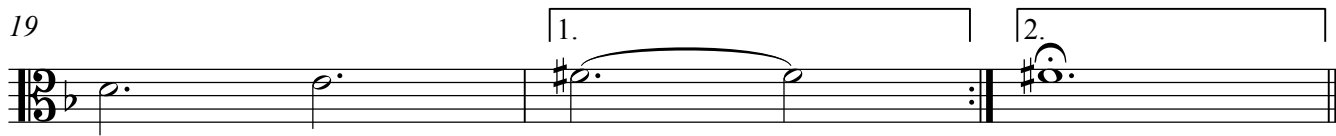
2.

Detailed description of the musical score: The score is for Violin 3 and is in 6/4 time. It begins with a treble clef and a key signature of one flat (B-flat). The first staff (measures 1-4) starts with a repeat sign and contains a series of quarter and half notes. The second staff (measures 5-8) continues with quarter and eighth notes, ending with a half note. The third staff (measures 9-13) features a half note with an ornament, followed by quarter notes and a half note. The fourth staff (measures 14-17) contains quarter notes and half notes with ornaments. The fifth staff (measures 18-20) concludes with a first ending (marked '1.') and a second ending (marked '2.').

Viola 1

Quarta & Ultima Parte: Corrente

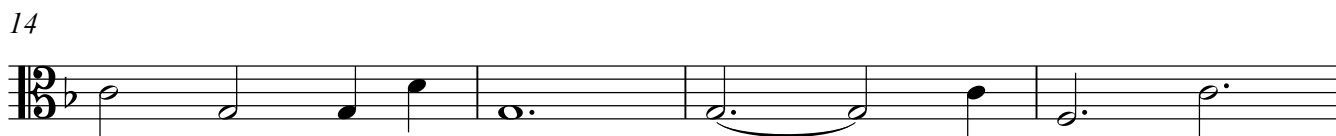
Lorenzo Allegri (c1573-1648)



Viola 2

Quarta & Ultima Parte: Corrente

Lorenzo Allegri (c1573-1648)



Violoncello

Quarta & Ultima Parte: Corrente

Lorenzo Allegri (c1573-1648)

