

Antonio Burlini

(1577 – 1623)

„*Euge serve bone et fidelis*“

Concerto a 4 et a 8 se piace

**C.A.T.B./Ripieno A.T.T.B.
Istrumento acuto (Violino)**

aus

**M E S S A, S A L M I
E T M O T E T T I**

Concertati A Otto Voci in due Chori col
Basso continuo per l'Organo, & vna
parte per vn Violino per chi
n'hà commodità

OPERA OTTAVA.

DI D. ANTONIO BVRLINI
MONACO OLIVATANO.

Nuouamente composta & data in luce,
CON PRIVILEGIO.

(Druckermarke)

I N V E N E T I A.
Appresso Giacomo Vincenti. MDCXV.

- - -

L'AVTTORE

ALLI VIRTUOSI CANTORI

Per Concertare bene il tutto bisognaua fare vna ò più copie
del Basso continuo, che serviriano per vno, ò più Istrumen-
ti cioe Violino, Chitarone, ouero Lauto; che à questo fine
gli e fatta la parte per il Violino. Se bene riusciranno ancora con le
voci semplici. Auuertendo, che solamente li Quattro Motetti si pos-
sono cantare col Choro di Concerto. Viuete contenti.

herausgegeben von Gunther Morche, Heidelberg, Juli 2012
gesetzt von Hermann Hinsch mit M-Tx

Das Kopieren ist nur für den nicht kommerziellen Gebrauch erlaubt.

Istr. acuto c¹

Musical staff for Istr. acuto c¹ in C major, 4/4 time. The melody consists of quarter notes: C4, D4, E4, F4, G4, A4, B4, C5.

c¹

Musical staff for c¹ in C major, 4/4 time. The melody consists of quarter notes: C4, D4, E4, F4, G4, A4, B4, C5.

Eu - ge ser - ve bo - ne - et fi - de - - - -

c³

Musical staff for c³ in C major, 4/4 time. The staff contains whole rests.

c⁴

Musical staff for c⁴ in C major, 4/4 time. The staff contains whole rests.

Musical staff for c⁴ in C major, 4/4 time. The staff contains whole rests.

Eu - -

c³

Musical staff for c³ in C major, 4/4 time. The staff contains whole rests.

c⁴

Musical staff for c⁴ in C major, 4/4 time. The staff contains whole rests.

c⁴

Musical staff for c⁴ in C major, 4/4 time. The staff contains whole rests.

Musical staff for c⁴ in C major, 4/4 time. The staff contains whole rests.

Musical staff for c⁴ in C major, 4/4 time. The staff contains whole rests.


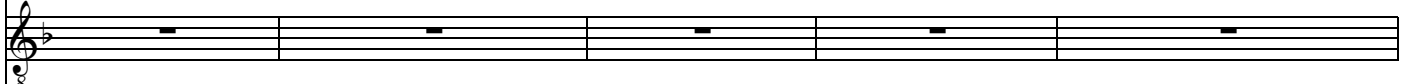
Musical staff for c⁴ in C major, 4/4 time. The staff contains whole rests.

Concerto


5



- lis qui-a super pau-ca fu-i - - sti fi-de - lis



- ge ser-ve bo - ne_ et fi - de - lis qui-a su-per pau-ca fu-



10



eu - ge ser - ve bo - ne et fi - de - lis



i - - sti fi - de - lis eu - - ge ser - ve bo - ne et fi - de -



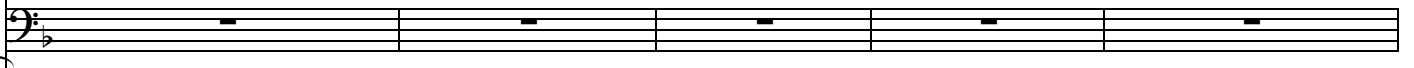
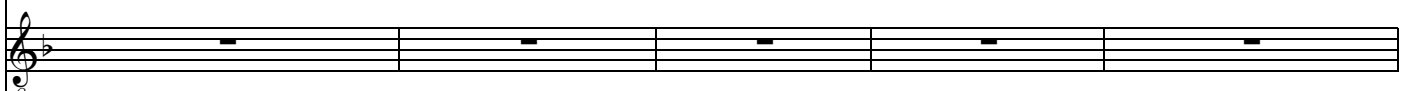
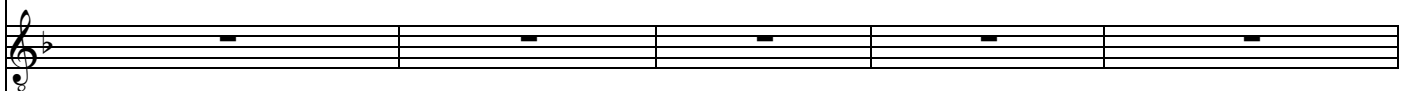
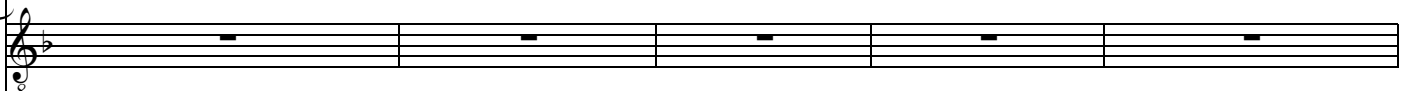
#



qui-a su-per pau-ca fu - i - - sti fi - de - - lis, qui-a super pau-ca fu-i - -



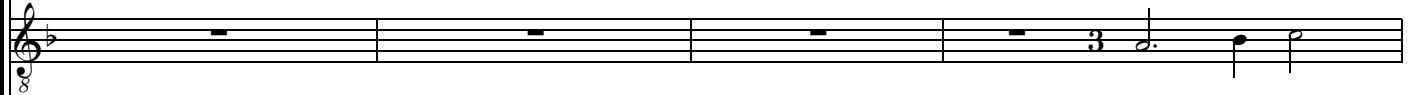
lis, qui-a su-per pau-ca fu-i - - sti fi-de - lis qui-a super



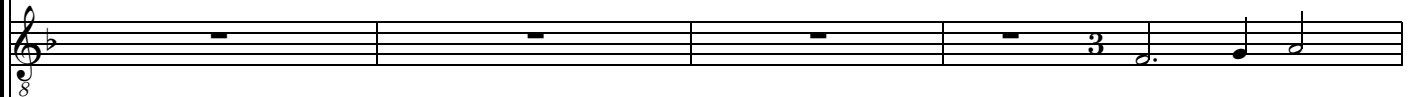
20



sti, qui - a su - per pau - ca fu - i - - sti fi - de - lis



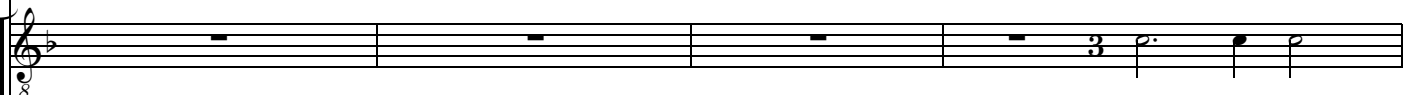
In - tra in



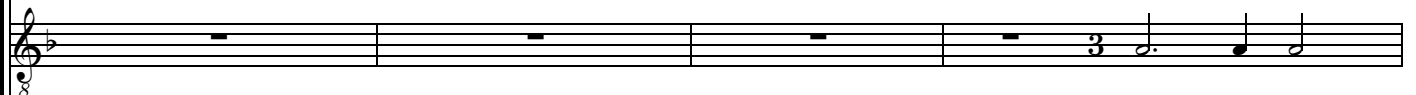
In - tra in



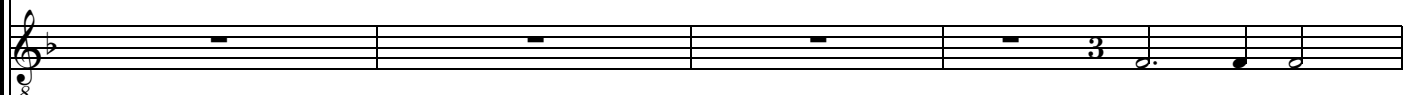
pau - ca fu - i - sti fi - de - - - - - lis



In - tra in



In - tra in



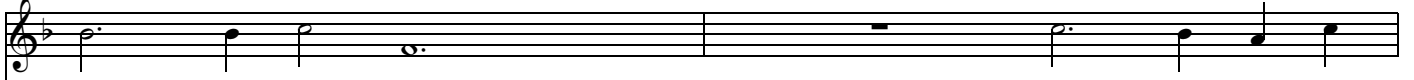
In - tra in



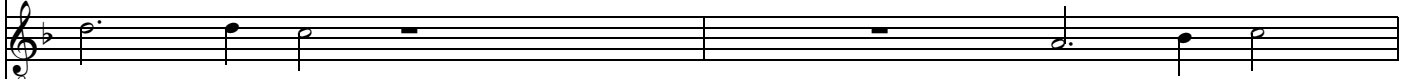
In - tra in



24

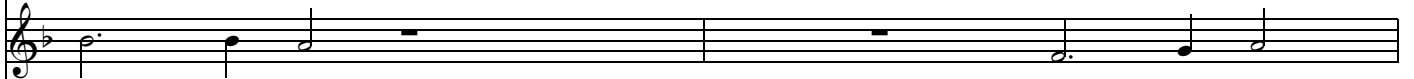


in - tra in gau - di - um



gau - di - um

in - tra in




gau - di - um

in - tra in



in - tra in gau - di - um



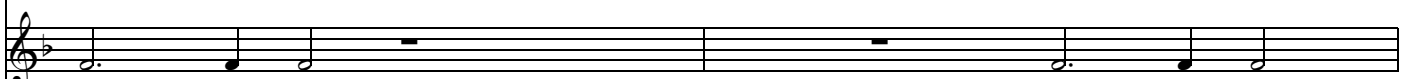
gau - di - um

in - tra in



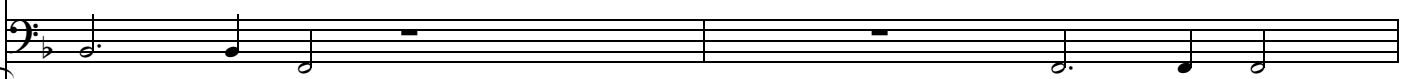
gau - di - um

in - tra in



gau - di - um

in - tra in



gau - di - um

in - tra in



26

in - tra in gau - di-um Do - mi-ni

gau - di-um Do - mi-ni tu - i

gau - di-um Do - mi-ni tu - i

in - tra in gau - di-um Do - mi - ni

gau - di-um Do - mi-ni tu - i

gau - di-um Do - mi-ni tu - i

gau - di-um Do - mi-ni tu - i

gau - di-um Do - mi-ni tu - i

tu - i in - tra in gau - di-um in - tra in in - tra in gau - di-um in - tra in gau - di-um in

in - tra in gau - di-um Do - mi-ni tu - - i, in - tra in gau - di-um, in in - tra in gau - di-um Do - mi-ni tu - - i, in - tra in gau - di-um, in in - tra in gau - di-um Do - mi-ni tu - - i, in - tra in gau - di-um, in in - tra in gau - di-um Do - mi-ni tu - - i, in - tra in gau - di-um, in

Ripieno

37

Do - mi-ne quin-que ta-len - - ta tra-di - di - sti

ta tra-di - di - sti mi - - hi

b

41

Musical staff with notes and rests.

Empty musical staff.

Musical staff with notes and rests.

mi - hi, tra-di - di - - sti - mi - hi, ec - ce a - li - a

Musical staff with notes and rests.

tra-di - di - - sti mi - - hi

Empty musical staff.

Empty musical staff.

Empty musical staff.

Empty musical staff.

Empty musical staff.

Musical staff with notes and rests.

4 #3

46



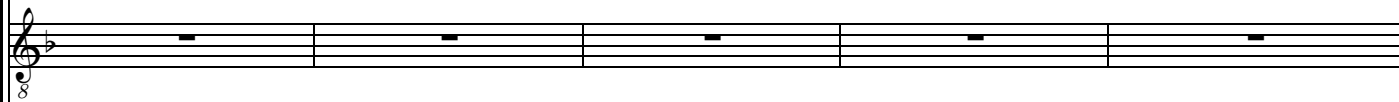
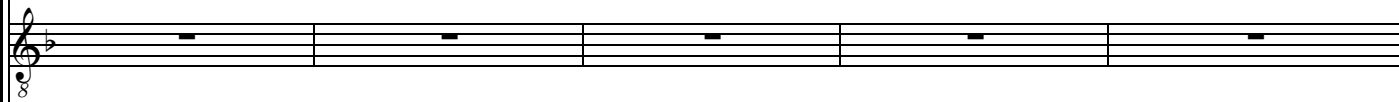
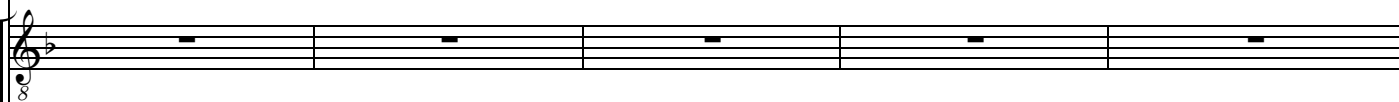
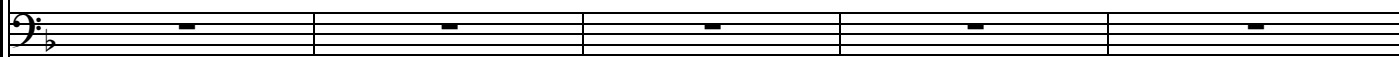
quin - que

ec - ce a - li - a quin - que,



e - - ce a - li - a quin - que

ec-ce a - li - a



51

A musical staff in treble clef with a key signature of one flat. It contains five measures of music: a quarter rest, a quarter note, a half note, a half note with a slur over it, and a quarter note.

An empty musical staff in treble clef with a key signature of one flat.

A musical staff in treble clef with a key signature of one flat. It contains five measures of music: a quarter rest, eighth notes, quarter notes, a quarter note with a slur over it, and eighth notes.

ec-ce a - li - a quin - que su - per - lu - cra - tus sum, su - per - lu -

A musical staff in treble clef with a key signature of one flat. It contains five measures of music: a quarter note, a quarter note, a quarter note, a quarter note with a slur over it, and a quarter note.

quin - que su - per - lu - cra - - - - tus sum,

An empty musical staff in bass clef with a key signature of one flat.

An empty musical staff in treble clef with a key signature of one flat.

An empty musical staff in treble clef with a key signature of one flat.

An empty musical staff in treble clef with a key signature of one flat.

An empty musical staff in bass clef with a key signature of one flat.

A musical staff in bass clef with a key signature of one flat. It contains five measures of music: a half note, a half note, a half note, a half note with a sharp sign, and a half note.

60

gau - di-um Do - mi-ni tu - i in - tra in

in - tra in gau - di-um Do - mi-ni tu - i,

in - tra in gau - di-um Do - mi - ni tu - i,

gau - di-um Do - mi - ni tu - i in - tra in

in - tra in gau - di-um in - tra in

in - tra in gau - di-um in - tra in

in - tra in gau - di-um in - tra in

in - tra in gau - di-um in - tra in

Ripieno

63

gau - di-um in - tra in gau - di-um Do - mi-ni

in - tra in gau - di-um Do - mi-ni tu - i

in - tra in gau - di-um Do - mi-ni tu - i

gau - di-um in - tra in gau - di-um Do - mi-ni

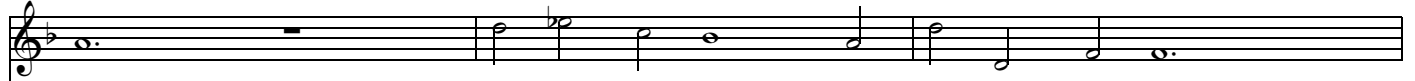
gau - di-um, in - tra in gau - di-um Do - mi-ni tu - - i

gau - di-um, in - tra in gau - di-um Do - mi-ni tu - - i

gau - di-um, in - tra in gau - di-um Do - mi-ni tu - - i

gau - di-um, in - tra in gau - di-um Do - mi-ni tu - - i

66



tu - i in - tra in gau - di-um, in



in - tra in gau - di-um Do - mi-ni tu - i in - tra in gau - di-um, in



in - tra in gau - di-um Do - mi - ni tu - i in - tra in gau - di-um, in



tu - i in - tra in gau - di-um, in



in - tra in gau - di-um in - tra in gau - di-um, in - tra in



in - tra in gau - di-um in - tra in gau - di-um, in - tra in



in - tra in gau - di-um in - tra in gau - di-um, in - tra in



in - tra in gau - di-um in - tra in gau - di-um, in - tra in



69

gau - di - um Do - mi - ni tu - - i Eu - ge

gau - di - um Do - mi - ni tu - - i Eu - ge

gau - di - um Do - mi - ni tu - i Eu - ge

gau - di - um Do - mi - ni tu - - i Eu - ge

gau - di - um Do - mi - ni tu - - i Eu - ge ser - ve

gau - di - um Do - mi - ni tu - - i, Eu - ge, ser - - ve

gau - di - um Do - mi - ni tu - - i, Eu - ge, ser - ve bo -

gau - di - um Do - mi - ni tu - - i, Eu - ge, ser - - ve

73

ser - ve bo - - ne et fi - de - lis _____ qui-a su-per pau - ca fu -

ser - ve bo - - ne et fi - de - - lis

ser - ve bo - - ne et fi - de - - lis

ser - ve bo - - ne et fi - de - - lis qui-a su-per

bo - - - - ne et fi - de - - lis

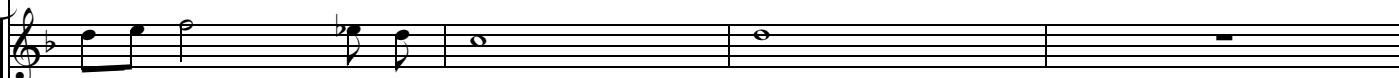
bo - - - - ne et fi - de - - lis

- - ne et _____ fi - de - lis

bo - - ne et fi - de - - lis

3 4 3

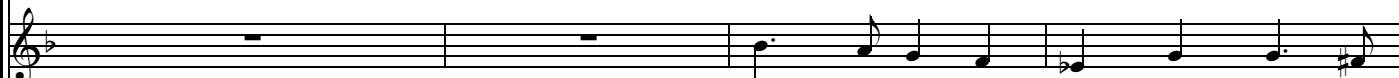
78



i - - - sti fi - de - - - lis



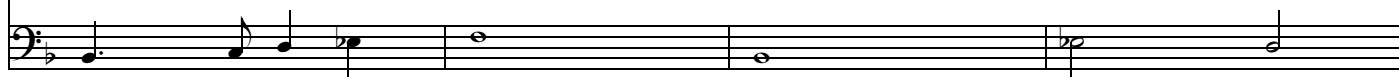
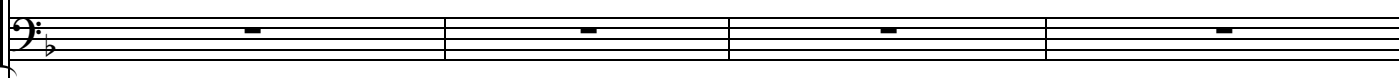
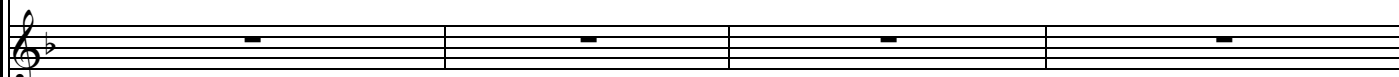
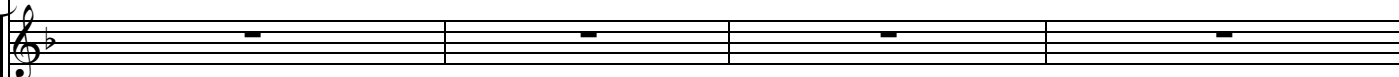
su - pra mul - ta te con - sti - - - tu -



su - pra mul - ta te con - sti - tu -



pau - ca fu - i - sti fi - de - - - lis



6

#

82

Musical staff with notes and rests.

Musical staff with notes and rests.

qui - a su - per pau - ca fu - i - sti fi - de - - - -

Musical staff with notes and rests.

am

Musical staff with notes and rests.

am

qui - a su - per pau - ca fu - i - sti fi - de - - - -

Musical staff with notes and rests.

qui - a su - per pau - ca fu - i - - - - sti fi - de - - - -

Musical staff with notes and rests.

Musical staff with notes and rests.

Musical staff with notes and rests.

Musical staff with notes and rests.

Musical staff with notes and rests.

3 4 3

85

lis su - pra mul - ta

su - pra mul - ta te con - sti - - tu - am

lis su - pra mul - ta te con -

lis su - pra mul - ta te con - sti - - tu - am

89

te con - sti - tu - am

su - pra

qui - a su - per pau - ca fu - i - - sti _____ fi - de -

sti - tu - am

qui - a su - per pau - ca fu - i - - sti fi - de -

3 4 3

mul - ta te con - sti - - - tu - am su - pra

lis su - pra mul - ta te con - sti - - - tu -

lis su - pra mul - ta te con - sti - tu -

su - pra mul - ta te con - sti - tu - am

6

97

mul-ta te con - sti - tu-am, su - pra mul-ta te con-sti - tu - am

am su - pra mul-ta te con - sti - - tu - am

am su - pra mul-ta te con-sti - tu - am

su - pra mul-ta te con - sti - - - - - tu - - am

in - tra in

in - tra in

in - tra in

in - tra in

4
Ripieno



in - tra in gau - di-um Do - mi-ni



in - tra in gau - di-um Do - mi-ni tu - i



in - tra in gau - di-um Do - mi - ni tu - i



in - tra in gau - di-um Do - mi - ni



gau - di-um



gau - di-um



gau - di-um



gau - di-um



#

104

tu - i in - tra in gau - di-um, in - tra in gau - di-um

in - tra in gau - di-um, in - tra in gau - di-um, in - tra in gau - di-um

in - tra in gau - di-um, in - tra in gau - di-um, in - tra in gau - di-um

tu - i in - tra in gau - di-um, in - tra in gau - di-um

in - tra in gau - di-um in - tra in gau - di-um

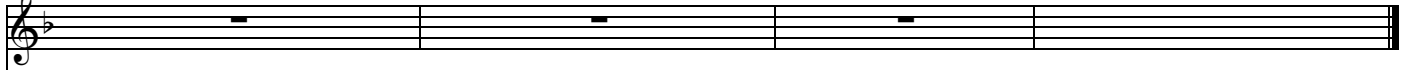
in - tra in gau - di-um in - tra in gau - di-um

in - tra in gau - di-um in - tra in gau - di-um

in - tra in gau - di-um in - tra in gau - di-um

in - tra in gau - di-um in - tra in gau - di-um

111



ser - ve bo - ne et fi - de - - - - lis.



ne, ser - ve bo - ne et fi - de - - - - lis.

