

RIGADOON (Z. 653)

for Trumpet & Organ

Score (01':15")

Allegro ♩ = 105

Henry Purcell (1659 - 1695)

Arr. Michel Rondeau

Trumpet in C

Organ

This system contains the first five measures of the score. The Trumpet in C part is written in a single staff with a treble clef and a key signature of two sharps (F# and C#). The Organ part is written in two staves (treble and bass clefs) with a key signature of two sharps. The organ accompaniment features a steady bass line and a treble line with chords and moving lines.

C Tpt.

Org.

This system contains measures 6 through 11. The C Trumpet part has a six-measure rest at the beginning of the system, followed by a single note in measure 7 and then rests for the remainder of the system. The Organ part continues with its accompaniment, showing some changes in the treble line.

C Tpt.

Org.

This system contains measures 12 through 15. The C Trumpet part has a six-measure rest at the beginning of the system, followed by a single note in measure 13 and then rests for the remainder of the system. The Organ part continues with its accompaniment, ending with a final chord in measure 15.

RIGADOON (Z. 653) - Purcell - Score

C Tpt.

Org.

17

17

tr

C Tpt.

Org.

22

22

C Tpt.

Org.

27

27

tr

RIGADOON (Z. 653)

for Trumpet & Organ

Trumpet in C

Henry Purcell (1659 - 1695)

Arr. Michel Rondeau

Allegro ♩ = 105

7

8

tr

20

27

tr

2

RIGADOON (Z. 653)

for Trumpet & Organ

Trumpet in A

Henry Purcell (1659 - 1695)

Arr. Michel Rondeau

Allegro $\text{♩} = 105$

7

8

tr

20

27

tr

2

RIGADOON (Z. 653)

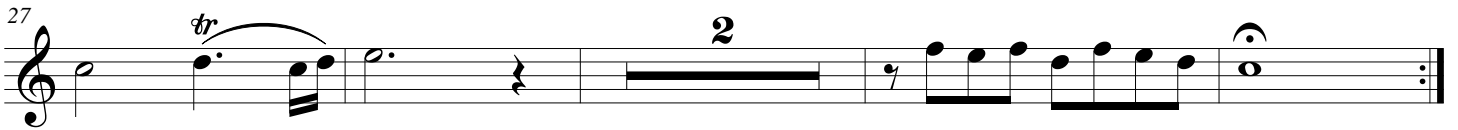
for Trumpet & Organ

Trumpet in D

Henry Purcell (1659 - 1695)

Arr. Michel Rondeau

Allegro ♩ = 105



RIGADOON (Z. 653)

for Trumpet & Organ

Organ

Henry Purcell (1659 - 1695)

Arr. Michel Rondeau

Trumpet in C

Organ

Allegro $\text{♩} = 105$

C Tpt.

Org.

C Tpt.

Org.

RIGADOON (Z. 653) - Purcell - Organ

C Tpt.

Org.

Measures 17-21. The C Trumpet part (top staff) begins with a treble clef, a key signature of two sharps (F# and C#), and a common time signature. It features a melodic line with eighth and sixteenth notes, including a trill marked 'tr' in measure 19. The Organ part (bottom staves) consists of a right-hand staff with a treble clef and a left-hand staff with a bass clef, both in the same key signature. The right hand plays chords and moving lines, while the left hand provides a steady bass accompaniment.

C Tpt.

Org.

Measures 22-26. The C Trumpet part (top staff) continues the melodic line with some rests. The Organ part (bottom staves) features more complex chordal textures in the right hand, including sixteenth-note patterns, while the left hand maintains a simple bass line.

C Tpt.

Org.

Measures 27-31. The C Trumpet part (top staff) concludes with a trill marked 'tr' in measure 27 and a final melodic phrase. The Organ part (bottom staves) ends with a final chord in the right hand and a concluding bass note in the left hand. Both parts end with a double bar line and repeat dots.