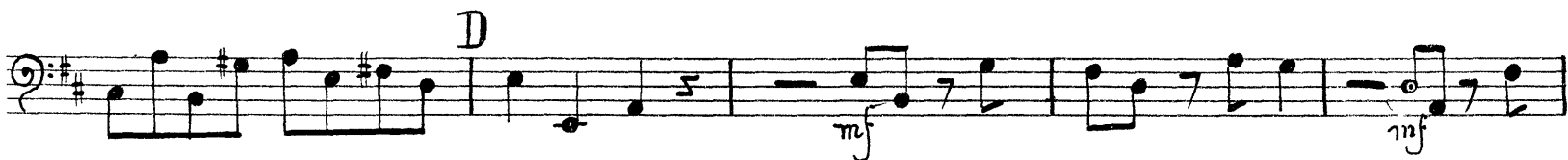
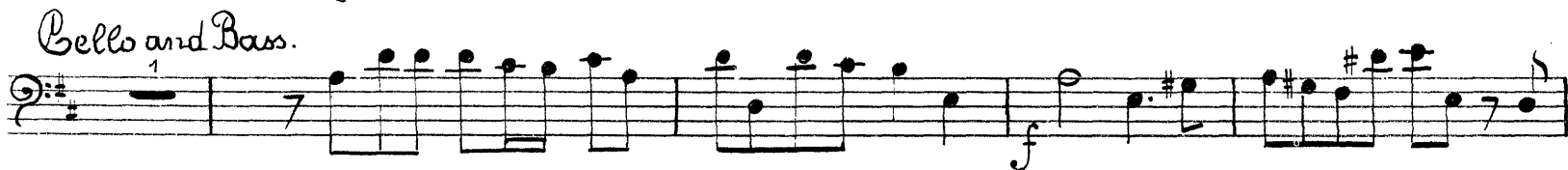


Bello Bass

Thomas Arne

The Masque of Comus, Overture

Largo.



Arne — The Masque of Comus, Overture

G

Two staves of musical notation in bass clef, key of D major. The first staff begins with a dynamic marking of *f* and contains a series of notes, including a long melodic line with a slur. The second staff continues the melodic line with a similar dynamic marking.

Adagio: *Allegro: (Gavotte.)*

Two staves of musical notation. The first staff is in common time (C) and begins with a dynamic marking of *p*. The second staff is in 3/4 time and begins with a dynamic marking of *f*. A double bar line separates the two sections.

H

Third staff of musical notation in bass clef, key of D major, continuing the Gavotte section. It features a dynamic marking of *f* and a measure with a '4' above it.

I

Two staves of musical notation in bass clef, key of D major. The first staff begins with a dynamic marking of *p*. The second staff continues the melodic line with a similar dynamic marking.

J

Two staves of musical notation in bass clef, key of D major. The first staff begins with a dynamic marking of *f*. The second staff continues the melodic line with a similar dynamic marking. The section ends with a 'Roll:' instruction and a dashed line.