

**Christoph Graupner**

**Kantate**

*Wer nicht zur Tür hinein  
geht*

(GWV 1140/43)

Solo Bass

2 Violini, Viola  
Violoncello/Violone  
Basso continuo

herausgegeben von  
**Werner Jaksch**

# Wer nicht zur Tür hinein gehet

## Dictum

Christoph Graupner

Violino 1

3

5

7

9

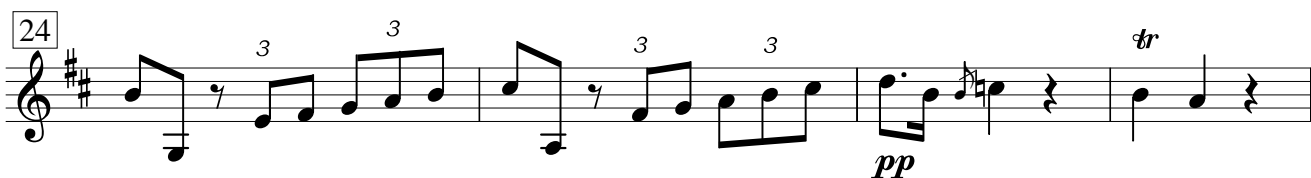
12

Recitativo tacet

## Aria

6

10



45

48

51

56

61

65

68

71

75

78

83 *f* *pp*

87 *tr* *f*

91

94

97

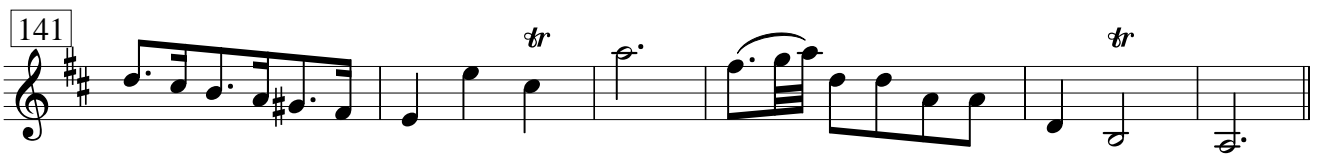
100

103

108 *tr*

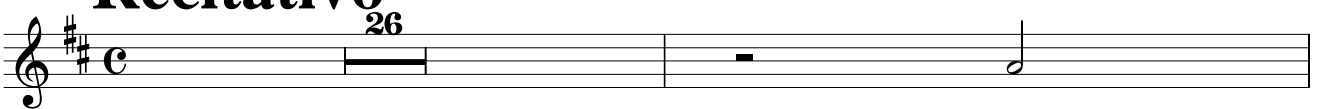
113 *tr*

118



da capo

## Recitativo



## Aria





18 *tr*



Musical notation for measure 18, starting with a treble clef and a key signature of three sharps (F#, C#, G#). The notation includes a trill (*tr*) over a dotted quarter note, followed by a quarter rest, a quarter note, and a half note. The piece concludes with a forte (*f*) dynamic marking.

20



Musical notation for measure 20, featuring a continuous eighth-note pattern in a treble clef with a key signature of three sharps.

21



Musical notation for measure 21, continuing the eighth-note pattern from the previous measure.

22



Musical notation for measure 22, featuring a trill (*tr*) over a dotted quarter note.

25 *tr* *tr* *tr*



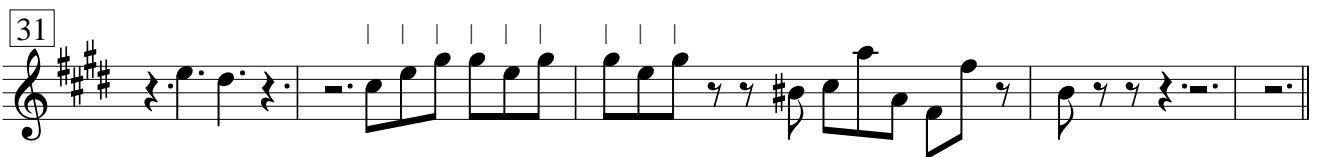
Musical notation for measure 25, featuring three trills (*tr*) over dotted quarter notes.

28



Musical notation for measure 28, featuring a treble clef and a key signature of three sharps, with various note values and rests.

31



Musical notation for measure 31, featuring a treble clef and a key signature of three sharps, with various note values and rests.

da capo



# Choral

1 *f* *tr*

3 *p* *tr*

5 *f* *p* *tr*

7 *tr* *f* *tr*

9 *p* *f*

11 *tr* *p*

13 *tr* *f*

14 *p*