

CONCERTI DI CAMERA

A 4.5.6.7.8.9 INSTRUMENTI.

Dedicati

ALLA SER.^{ma} ALTEZZA ELETTORALE

DI

GIORGIO LUDOVICO,

DUCA DI BRONSVICH e LVNEBURGO

ELETTORE & ARCITESORIERO

DEL . S . R . I . &c. &c. &c.



DA

Francesco Venturini, Maestro dei Concerti di Camera di S.A.E.
in Hannovera .

Divisi in due Parti .

OPERA PRIMA .

Parte Prima .

Vm. 7 1083 C.

a Amsterdam Chez Etienne Roger, Marchand Libraire .

N^o 164

SONATA I

OUVERTURE a 8 Instruments 2 Violons 2 Hautbois
1 Haute Contre 1 Taille 1 Basson & Basse Continue.

Grave e Staccato

Adagio

ALLEMANDA

a 8 Instruments

Alto Viola

ARIA
à 8 Instruments

Andante

GAVOTTA
à 8 Instruments.

Alternativement avec le Trio suivant.

Fine Trio Tacet

Da Capo del Gavotta

MENUET
à 8 Instruments

Alternativement avec le Menuet suivant.

Fine

Da Capo del Primo Menuet

SONATA II

CONCERTO à 10 Instruments 2 Violons, 2 Hautbois 2 Flûtes
1 Hautb. Contr. 1 Taille 1 Basson, Basse & Basse Continue.

Allegro Assai

Piano

Forte

Piano

Forte

Alto Viola

Piano *Forte* *Forte* *Piano* *Forte* *Forte* *Piano* *Forte* *Forte*

2 3 7 3 6

Fine *Adagio*

Pianissimo

Da Capo del Concerto

CANON
à 8 Instruments

Andante

1

PASSEPIED
à 8 Instruments

Alternativement avec le Trio suivant

Piano *Forte*

24

Fine *Trio Tacet*

Da Capo del Passepied

Alto Viola

SONATA III

OUVERTURE à 8 Instruments 2 Violons, 2 Hautbois,
1 Haute Contre 1 Taille 1 Basson & Basse Continue.

Allegro e Staccato

The first movement, *Allegro e Staccato*, is written for the Alto Viola. It consists of 14 staves of music. The notation includes a variety of rhythmic values such as eighth, sixteenth, and thirty-second notes, often beamed together. There are several trills and grace notes throughout. Dynamic markings include *Soli* and *Tutti*. The piece concludes with a repeat sign and a final cadence in common time.

ALLEMANDE

à 8 Instruments

Pas trop vite

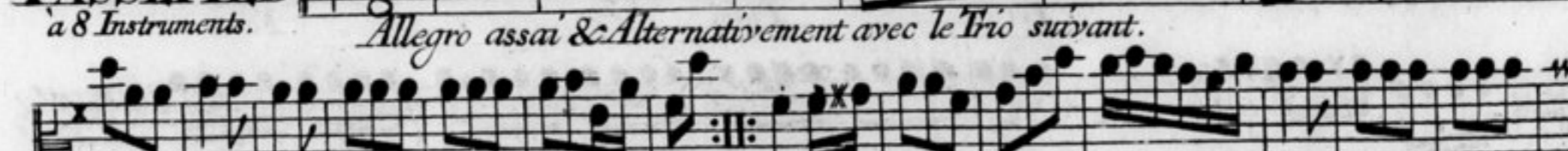
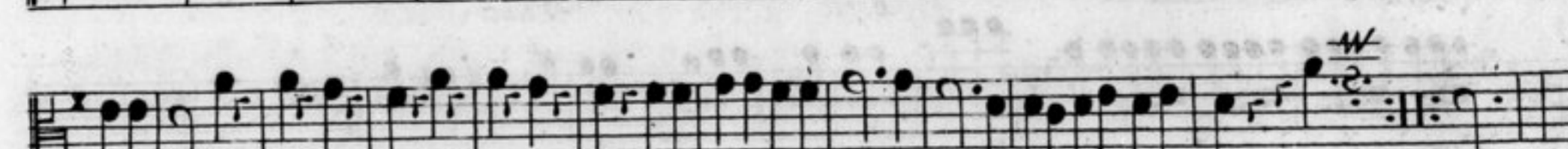
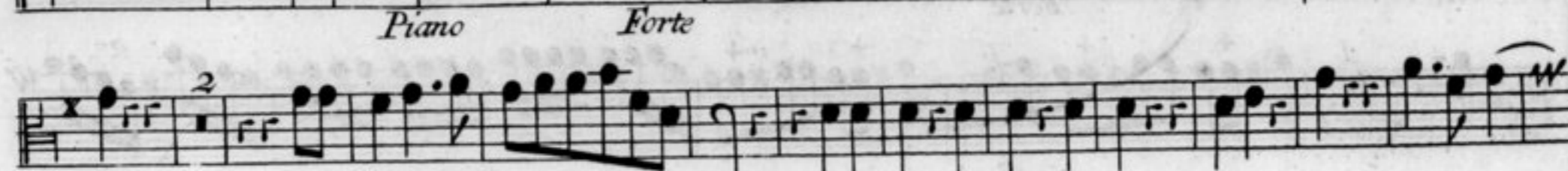
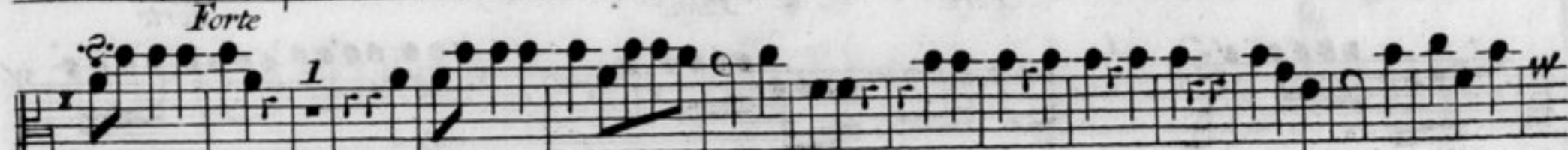
The second movement, *ALLEMANDE*, is marked *Pas trop vite*. It consists of three staves of music. The primary rhythmic motif is a steady eighth-note pattern, characteristic of the Allemande dance. The piece ends with a repeat sign and a final cadence in common time.

Alto Viola

5



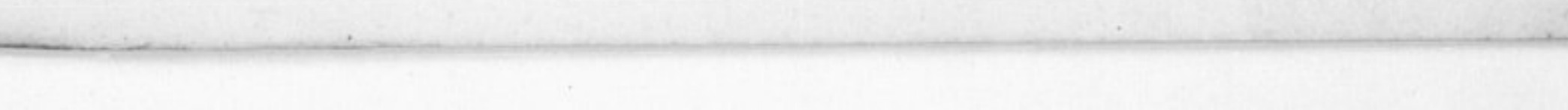
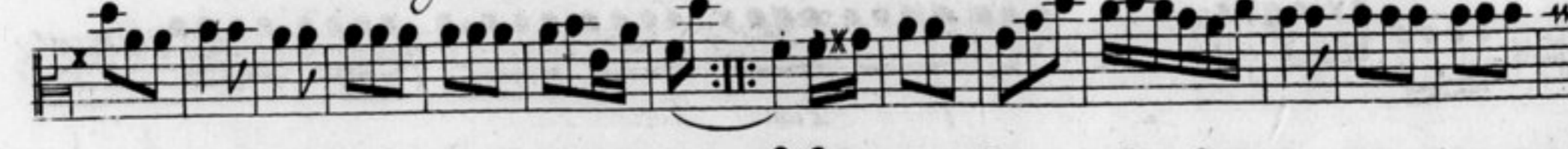
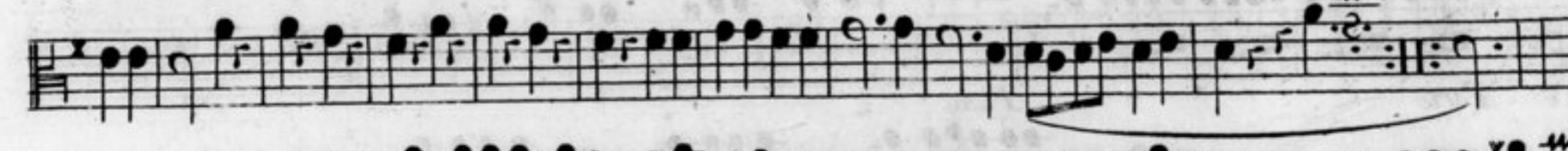
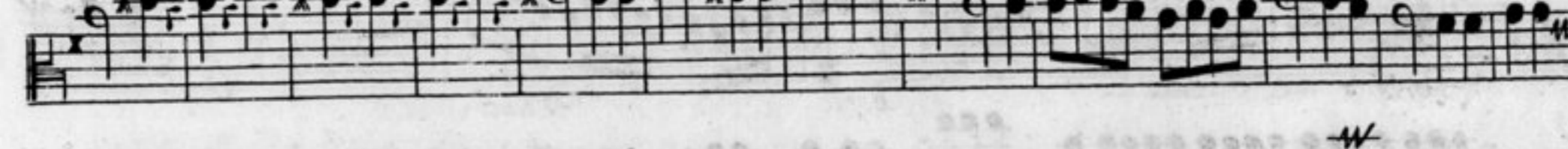
ARIA
à 8 Instruments.



Da Capo del Aria.

Fine Trio Tacet

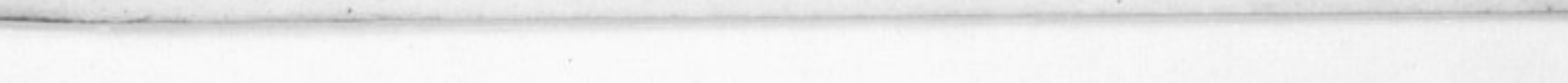
BOUREE
à 8 Instruments.



Da Capo del Passepiéd.

Fine Trio Tacet

PASSEPIED
à 8 Instruments.



SONATA IV

CONCERTO à 8 Instruments 2 Violons 2 Hautbois
1 Haute Contre 1 Tulle 1 Basson & Basse Continue.

Allegro assai. Alternativement avec la Sarabande

The musical score for the Alto Viola part of Sonata IV is divided into two main sections. The first section, marked *Allegro assai*, spans 13 staves and is characterized by intricate rhythmic patterns, including sixteenth and thirty-second notes, and frequent dynamic shifts between *Forte* and *Piano*. The second section, marked *Sarabanda*, begins on the 14th staff and features a slower, more melodic line with a *Forte* dynamic marking. The score includes various musical notations such as slurs, accents, and first endings.

Alto Viola

Da Capo del Concerto

GIGA
a 8 Instruments.

Allegro

Allegro

Piano

Forte

Piano Forte

Piano

Forte

Piano Forte

GAVOTTA
a 8 Instruments

Alternativement avec le Trio suivant.

Alternativement avec le Trio suivant.

16

Da Capo del Gavotta.

Fine Trio Tacet

MENUET
a 8 Instruments

Alternativement avec le Menuet suivant.

Alternativement avec le Menuet suivant.

Fine

Second Menuet.

Da Capo del Primc Menuet

SONATA V

OUVERTURE à 8 Instruments 2 Violons 2 Hautbois
1 Haute Contre 1 Flûte 1 Basson & Basse Continue.

Grave

Allegro

ALLEMANDA

à 8 Instruments.

Alto Viola

ARIA

a 9 Instruments 2 Violons 2 Hautbois 1 Haute Contre 1 Taille 2 Bassons & Basse Continue.

Musical score for the Aria section, featuring six staves of music. The first staff is in 3/4 time and begins with a *Piano* dynamic. The second staff has *Piano* and *Forte* markings. The third staff has *Piano* and *Pianissimo* markings. The fourth staff has *Forte* and *Piano* markings. The fifth staff has *Piano* and *Pianissimo* markings. The sixth staff has *Forte* markings.

GAVOTTA

a 8 Instruments

Musical score for the Gavotta section, featuring two staves of music. The first staff is in common time and includes first and second endings. The second staff includes first and second endings with triplets.

BOURÉE

a 8 Instruments.

Presto & Alternativement avec la Bourée suivante.

Musical score for the Bourée section, featuring five staves of music. The first staff is in common time. The second staff includes a *Fine* marking and a second Bourée. The third staff has *Piano* and *Forte* markings. The fourth staff has *Piano* and *Forte* markings. The fifth staff includes a *Da Capo del Prima Bourée.* instruction.

Alto Viola

MENUET
à 8 Instruments.

Alternativement avec le Menuet suivant.

Musical notation for the first system of the Minuet, including a repeat sign and a double bar line.

Fine

2. Menuet

Da Capo del Primo Menuet.

SONATA VI

CONCERTO à 9 Instruments 2 Violons, Violon Ripieno
2 Hautbois 1 Haute Contre 1 Taille 1 Basson &
Basse Continue.

Allegro

Musical notation for the first movement of the Sonata, featuring dynamic markings: *Piano*, *Forte*, *Piano Forte Piano*, *Forte*, *Piano*, *Forte*, *Piano*, *Forte Piano Forte*, *Piano*, *Forte*, *Piano*, *Forte*, *Pianissimo*, *Pia. Forte*, *Adagio e Piano*.

1

2

Da Capo del Concerto.

PASSEPIED
à 8 Instruments

Presto & Alternativement avec le Passepiéd suivant.

Musical notation for the first system of the Passepiéd, including a repeat sign and a double bar line.

Fine 2. Passepiéd

Da Capo del Primo Passepiéd

