

TROIS
TRIO

*Pour un Violoncelle obligé,
Violon et Basse.*
Composée

PAR

J. B. BREVAL

OPERA XXXIX

Prix 6[#].

Gravés par M^{lle} Ricker

PARIS

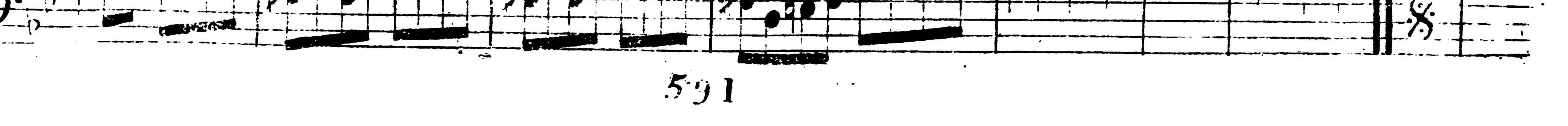
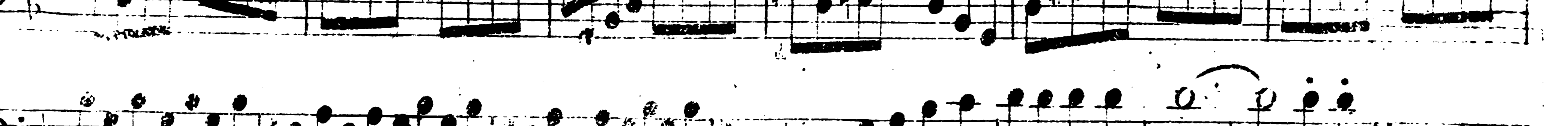
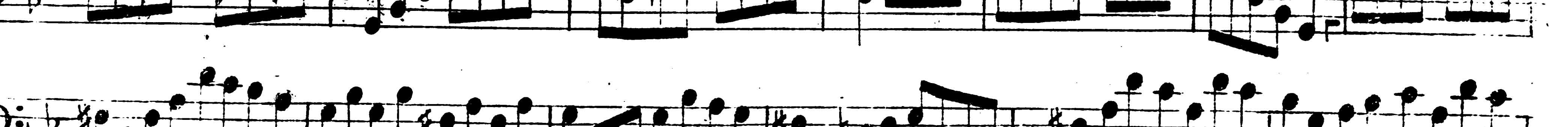
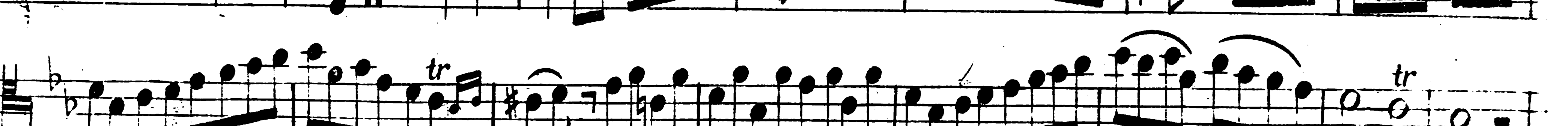


1818 1874 au Mont d'or Rue Honore, entre la Rue des Poulies et
la Maison d'Aligre, N^o 200.

Violoncello Principale.

Minore.

7



♯.

Allegro.

Violoncello Principale.

TRIO II

This page contains the musical score for the Violoncello Principale part of Trio II. The score is written in G major (one sharp) and 2/4 time. It consists of 15 staves of music. The notation includes various rhythmic values such as eighth and sixteenth notes, as well as rests. Trills are indicated by 'tr' above notes. The score concludes with a double bar line and repeat dots. The page number '591' is centered at the bottom.

Andante. *Violoncello Principale.*

Romance

The first system of the Romance section consists of two staves. The top staff contains the melody, starting with a treble clef, a key signature of one sharp (F#), and a common time signature (C). It features a series of eighth and sixteenth notes, with trills (tr) and slurs. The bottom staff provides a bass line with a bass clef, primarily using quarter and eighth notes.

Minore.

The second system continues the Romance section. The top staff melody includes a key signature change to two sharps (F# and C#) and a common time signature. It features a dynamic marking of *crec* (crescendo) and a *p* (piano) marking. The bottom staff continues the bass line.

Rondo.

The Rondo section begins with a new system. The top staff melody is in 2/4 time, with a key signature of two sharps (F# and C#). It features a dynamic marking of *F* (forte) and a trill (tr). The bottom staff continues the bass line.

Minore.

The second system of the Rondo section continues the melody and bass line. The top staff melody includes a key signature change to one flat (Bb) and a common time signature. It features a trill (tr) and a dynamic marking of *p* (piano). The bottom staff continues the bass line.

6.

Allegro *Violoncello Principale.*

TRIO III

The image displays a musical score for the Violoncello Principale part of a Trio III. The score is written on 14 staves. The first staff includes the tempo marking 'Allegro' and the instrument name 'Violoncello Principale.' The key signature is one sharp (F#) and the time signature is 2/4. The music is characterized by rapid sixteenth-note passages, often with trills (tr) and slurs. The notation includes various rhythmic values such as eighth, sixteenth, and thirty-second notes, as well as rests and dynamic markings. The score concludes with a double bar line and repeat dots.

Violoncello Principale

7.

