

Litanie della B. V. a 3. Voci, Con Stru!

Violino Secondo Sing.

Largo. *rit.* *for* *mo*

solo voce *solo voce*

for

Andante *Sancta Maria*

for *piano*

18/12

Voltris

Handwritten musical notation on a single staff. It begins with a treble clef and a key signature of two flats (B-flat and E-flat). The first measure contains a whole note chord with a '-2' above it. The rest of the staff contains a melodic line with various note values and rests. A 'p' dynamic marking is present above the second measure.

Handwritten musical notation on a single staff, continuing the melodic line from the previous staff. It features a 'p' dynamic marking at the beginning.

Handwritten musical notation on a single staff, continuing the melodic line. It includes various rhythmic patterns and rests.

Handwritten musical notation on a single staff. The first measure is marked with 'Sotto voce' above it. The staff contains a melodic line with many beamed notes.

Handwritten musical notation on a single staff, featuring a dense texture of beamed notes and slurs.

Handwritten musical notation on a single staff, continuing the dense texture of beamed notes.

Handwritten musical notation on a single staff, continuing the dense texture of beamed notes.

Handwritten musical notation on a single staff, continuing the dense texture of beamed notes.

Handwritten musical notation on a single staff, continuing the dense texture of beamed notes.

Handwritten musical notation on a single staff. It includes dynamic markings 'cresc.' and 'for' above the staff.

Volpe

Handwritten musical notation on a single staff, featuring a series of sixteenth-note runs followed by a few quarter notes. A "for" marking is present above the staff.

Handwritten musical notation on a single staff, continuing the sixteenth-note runs. A "pno...." marking is present above the staff.

Handwritten musical notation on a single staff, showing a mix of sixteenth-note runs and quarter notes.

Handwritten musical notation on a single staff, featuring sixteenth-note runs and quarter notes.

Handwritten musical notation on a single staff, consisting of a few notes and rests, with a double bar line and a "110." marking.

Andantino *vo: spirituales* *pno: sottovoce sempre*

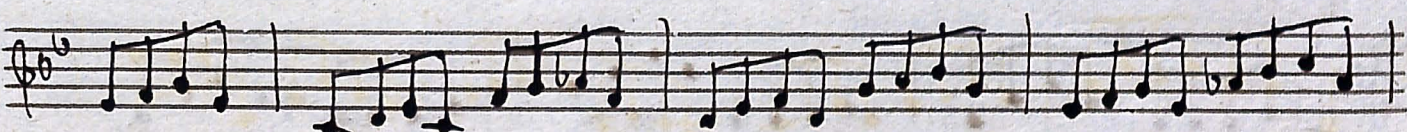
Handwritten musical notation on a single staff, starting with a treble clef and a key signature of two flats. The tempo is marked "Andantino" and the performance instruction is "vo: spirituales". A "pno: sottovoce sempre" instruction is written above the staff.

Handwritten musical notation on a single staff, featuring a series of eighth-note runs.

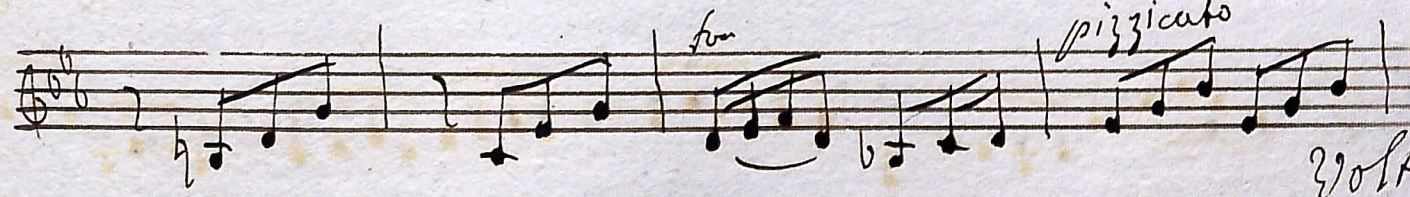
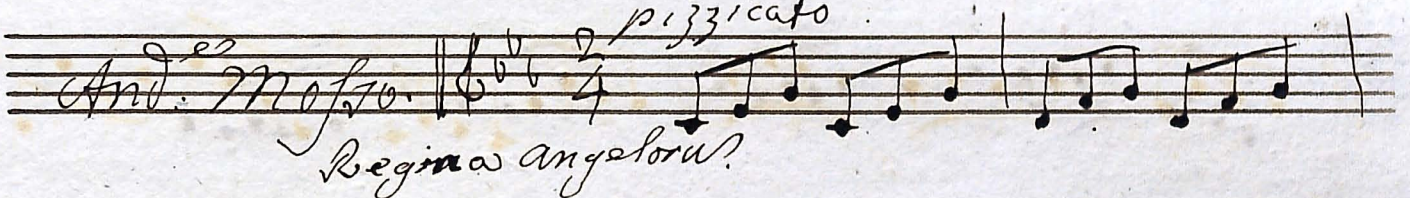
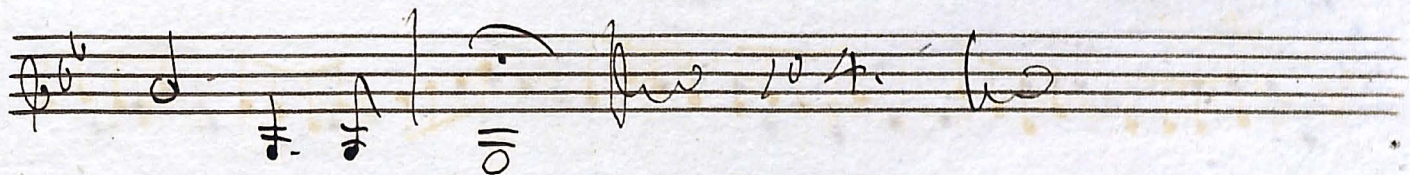
Handwritten musical notation on a single staff, featuring a series of eighth-note runs.

Handwritten musical notation on a single staff, featuring a series of eighth-note runs.

Handwritten musical notation on a single staff, featuring a series of eighth-note runs.







Wolke

arco

pizzicato

senza arco

ff

ffor.

ffor.

ff

Largo

58.

à mezzo voce

Largo

Agnus Dei

Auf Deo.