

# Tractos do Sábado Santo

Flute 2

Manoel Dias de Oliveira  
(1734 - 1813)

Allegro ♩ = 110

1º Tracto

6 *cresc.* *f* *p cresc.*

11 *f*

16 *2*

23 *5* *f*

33 *4* *p*

41 *f* *2*

47 Musical staff 47-52: Treble clef, key signature of one flat. Measures 47-52 contain eighth-note patterns with slurs. Measure 51 has a fermata and a '2' above it. Measure 52 has a fermata and a dynamic marking of *f*.

53 Musical staff 53-56: Treble clef, key signature of one flat. Measure 53 has a fermata and a '2' above it. Measures 54-56 contain eighth-note patterns with slurs. Measure 54 has a dynamic marking of *f*.

57 Musical staff 57-66: Treble clef, key signature of one flat. Measures 57-66 contain eighth-note patterns with slurs. Measure 61 has a fermata and a '6' above it. Measure 66 has a dynamic marking of *f*.

67 Musical staff 67-75: Treble clef, key signature of one flat. Measures 67-75 contain eighth-note patterns with slurs. Measure 71 has a fermata and a '4' above it. Measure 75 has a dynamic marking of *p*.

76 Musical staff 76-81: Treble clef, key signature of one flat. Measures 76-81 contain eighth-note patterns with slurs. Measure 78 has a dynamic marking of *f*.

82 Musical staff 82-86: Treble clef, key signature of one flat. Measures 82-86 contain eighth-note patterns with slurs. Measure 86 has a dynamic marking of *cresc.*

87 Musical staff 87-90: Treble clef, key signature of one flat. Measures 87-90 contain eighth-note patterns with slurs. Measure 87 has a dynamic marking of *f*. Measure 88 has a dynamic marking of *p*. Measure 89 has a dynamic marking of *cresc.*. Measure 90 has a dynamic marking of *f*.

91 Musical staff 91-94: Treble clef, key signature of one flat. Measures 91-94 contain eighth-note patterns with slurs. Measure 94 ends with a double bar line.

Allegro ♩ = 110

2º Tracto

The musical score for the 2º Tracto is written in G minor (one flat) and 3/4 time. It begins with a tempo marking of Allegro and a quarter note equal to 110 beats per minute. The piece is marked with a variety of dynamics and articulations:

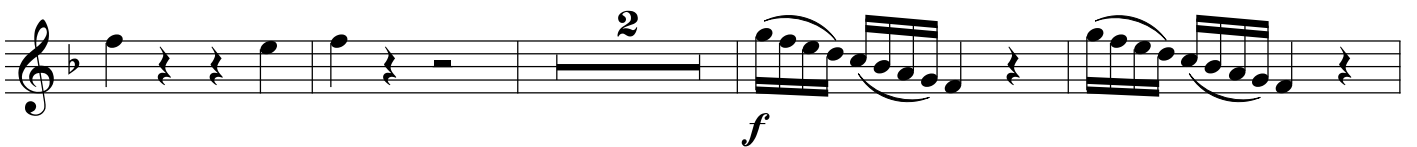
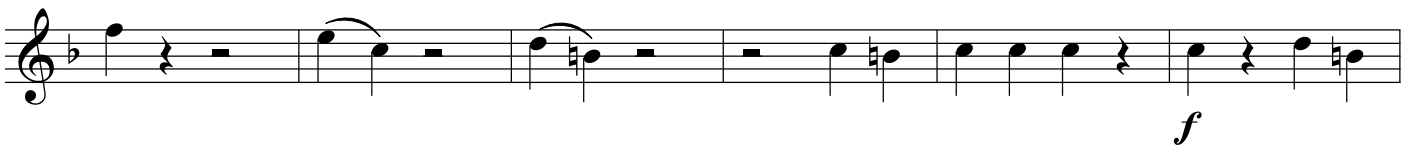
- Staff 1:** Starts with a forte (*f*) dynamic.
- Staff 2:** Features a piano (*p*) dynamic, followed by a crescendo (*cresc.*) leading to a forte (*f*) dynamic, and ends with a piano (*p*) dynamic.
- Staff 3:** Starts with a crescendo (*cresc.*) leading to a forte (*f*) dynamic.
- Staff 4:** Contains two forte (*f*) dynamic markings.
- Staff 5:** Includes a fermata over a whole note marked with a '7' (likely indicating a 7-measure rest), followed by a forte (*f*) dynamic.
- Staff 6:** Continues with various rhythmic patterns and dynamics.
- Staff 7:** Starts with a piano (*p*) dynamic and a crescendo (*cresc.*), leading to a forte (*f*) dynamic.
- Staff 8:** Features two forte (*f*) dynamic markings.

The first part of the score consists of five staves of music in G minor. The first staff begins with a piano (*p*) dynamic and features a melodic line with eighth-note patterns. The second staff transitions to a forte (*f*) dynamic. The third and fourth staves continue with complex rhythmic patterns, alternating between *p* and *f* dynamics. The fifth staff concludes with a final *f* dynamic.

**Allegro**

3º Tracto **2**

The second part of the score consists of two staves of music in G minor. The first staff begins with a forte (*f*) dynamic and features a melodic line with eighth-note patterns. The second staff continues with a similar melodic line, also marked with a forte (*f*) dynamic.



Allegro

4º Tracto

*f*

*p*

*f*

2

3

3

2

2

4

5

2

2

# Alleluia, Confitemini e Laudate

Flute 2

Manoel Dias de Oliveira  
(1734 - 1813)

Allegro ♩ = 120

Alleluia

Musical score for Alleluia, Flute 2 part. It consists of three staves of music in G major (one sharp) and common time (C). The tempo is Allegro with a quarter note equal to 120 beats per minute. The first staff begins with a dynamic marking of *f* (forte). The piece concludes with a double bar line.

Andante

Confitemini

Musical score for Confitemini, Flute 2 part. It consists of four staves of music in G major (one sharp) and common time (C). The tempo is Andante. The first staff begins with a dynamic marking of *f* (forte) and ends with a dynamic marking of *p* (piano). The second staff contains a triplet of eighth notes and a pair of eighth notes, both marked with a *f*. The third staff features a sixteenth-note triplet and a sixteenth-note pair, both marked with a *f*. The piece concludes with a double bar line and a 3/4 time signature.

Andante

Laudate

Musical score for Laudate, Flute 2 part. It consists of three staves of music in G major (one sharp) and 3/4 time. The tempo is Andante. The first staff begins with a dynamic marking of *p* (piano) and features a 12-measure rest. The second staff begins with a dynamic marking of *p*. The piece concludes with a double bar line and a 2-measure rest.

# Vespere autem

Flute 2

Antífona do Magnificat

Manoel Dias de Oliveira  
(1734 - 1813)

Andante





# Magnificat

Flute 2

Manoel Dias de Oliveira  
(1734 - 1813)

Allegro

The musical score for Flute 2, titled "Magnificat" by Manoel Dias de Oliveira, is presented in a single system of eight staves. The key signature is D major (two sharps) and the time signature is common time (C). The tempo is marked "Allegro". The score begins with a forte (*f*) dynamic. The first staff contains two measures with a "2" above the staff, indicating a second ending. The second staff features an "8" above it. The third staff includes dynamic markings of *f* and *p*. The fourth staff is marked *p*. The fifth staff is marked *f*. The sixth staff includes *p* and *f* dynamics. The seventh staff is marked *f*. The eighth staff has a "7" above it and *f* below it. The score concludes with a final measure.

Matinas do Sábado Santo  
Magnificat

*p*

*p* *cresc.*

*f* *p*

*f* *p* *f*

*p* *cresc.* *f*

*f*

Largo 31 Allegro

*f*

*p* *f*