

Violine.

20353
SHELF
447
H125 Lep

LENZREIGEN.

I. Frisch und kernig. M.M. $\text{♩} = 69$. Ferdinand Hummel, Op. 39.

Musical score for the first movement, 'Frisch und kernig'. It consists of five staves of music in G major and 3/4 time. The first staff begins with a treble clef and a key signature of one sharp. The music features a mix of eighth and sixteenth notes, often beamed together. Dynamics include *f* (forte) and *mf* (mezzo-forte). A *cresc.* (crescendo) marking is present in the third staff. The movement concludes with a *rit.* (ritardando) marking.

II. Lieblich. M.M. $\text{♩} = 60$.

Musical score for the second movement, 'Lieblich'. It consists of six staves of music in G minor and 3/4 time. The first staff begins with a treble clef and a key signature of two flats. The music is characterized by a slower tempo and a more lyrical quality. Dynamics include *mf* (mezzo-forte). A *rit.* (ritardando) marking is present in the fourth staff. The movement concludes with a *rit.* marking and a dynamic of *p* (piano). The number '18' is printed below the staff.

Violine.

Erstes Zeitmass.

III.

Leicht und flüssig . M.M. ♩ = 120.

Violine.

Ausdrucksvoll. M.M. ♩ = 69.

IV.

16

Cello

mf

mf

dim.

1

Lieblich. M.M. ♩ = 132.

V.

pizz.

p

cresc.

mf

mf

dim.

p

Violine.

VI.

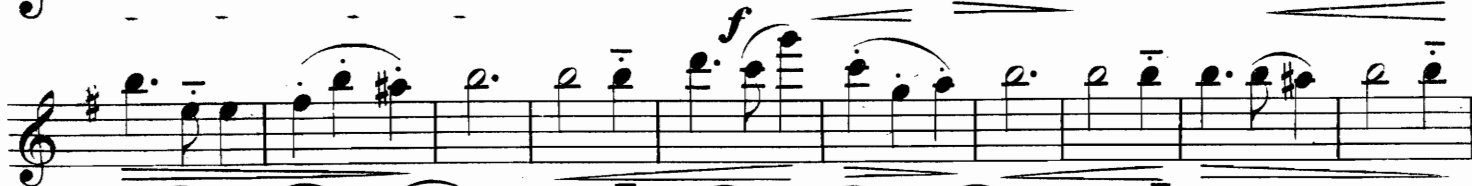
Lieblich. M.M. ♩ = 132.

pizz.



Frisch und kernig. M.M. ♩ = 69.

arco



Sehr feurig und lebhaft. M.M. ♩ = 108.

