



*Corno Pmo*



Messa a 2. Voci con Violini

Sinfonia

Corno primo

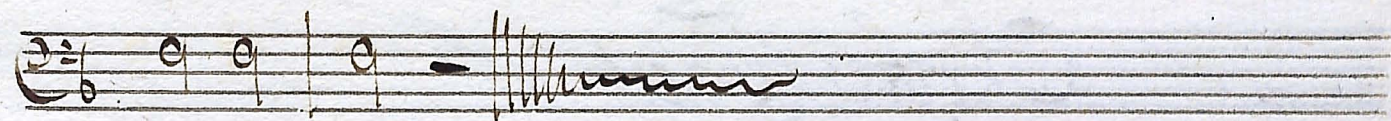
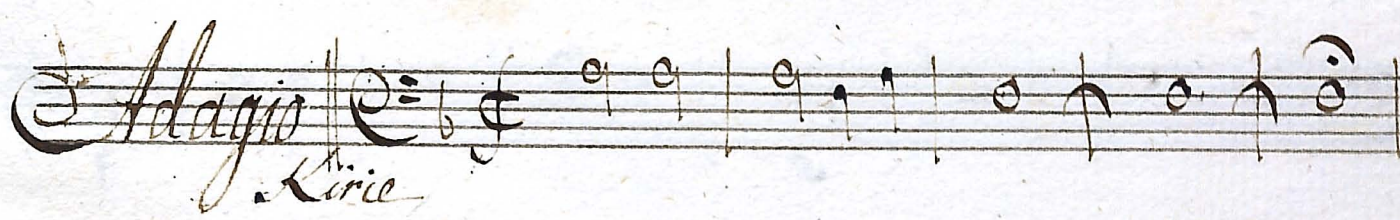
*Larghetto*

*Allegro*



A handwritten musical score consisting of ten staves. Each staff begins with a treble clef and a key signature of one flat (B-flat). The notation is written in dark ink on aged, slightly yellowed paper. The first staff contains a series of eighth notes with stems pointing down. The second staff features a mix of eighth and sixteenth notes, some beamed together. The third staff is composed of quarter notes with stems pointing down. The fourth staff contains eighth notes with stems pointing down. The fifth staff shows a sequence of eighth notes with stems pointing down. The sixth staff features quarter notes with stems pointing down. The seventh staff contains eighth notes with stems pointing down. The eighth staff shows a sequence of eighth notes with stems pointing down. The ninth staff features quarter notes with stems pointing down. The tenth staff contains a series of eighth notes with stems pointing down. There are some small, handwritten markings below the staves, possibly indicating fingerings or other performance instructions.







Handwritten musical score for five staves. The notation includes various note values (quarter, eighth, and sixteenth notes), rests, and bar lines. There are some markings below the staves, including a '3' under the second staff and a '5' under the third staff. The fifth staff ends with a double bar line and a wavy line.

*Christo Tacet*

Handwritten musical score for four staves. The first staff begins with the tempo marking *Adagio* and the instrument *Lirio*. The notation includes various note values, rests, and bar lines. There are some markings below the staves, including a '6' under the fourth staff and a '11' under the third staff. The third staff also has a marking *Chl<sup>o</sup>* above it.



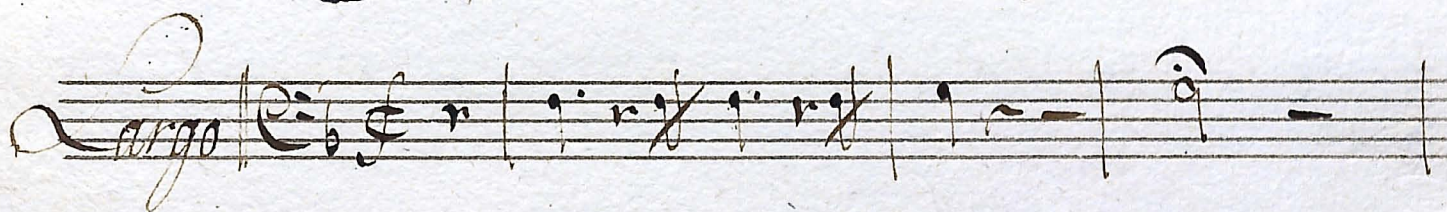
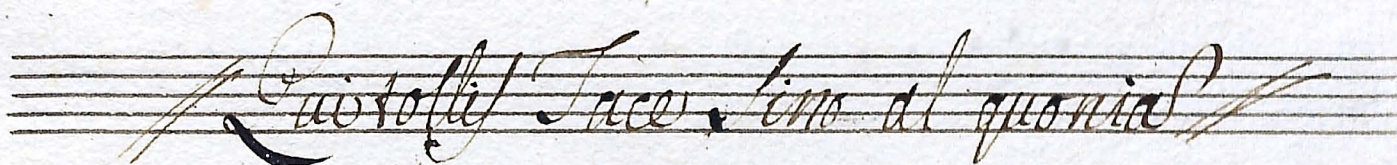
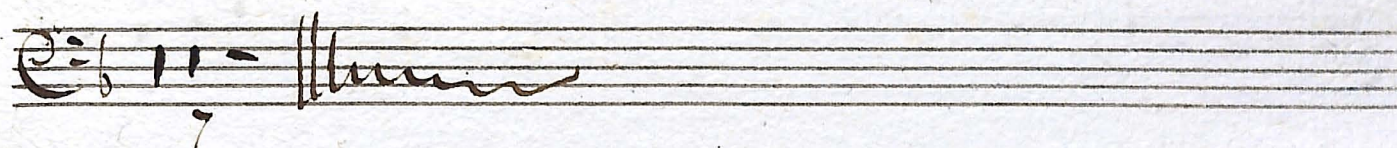
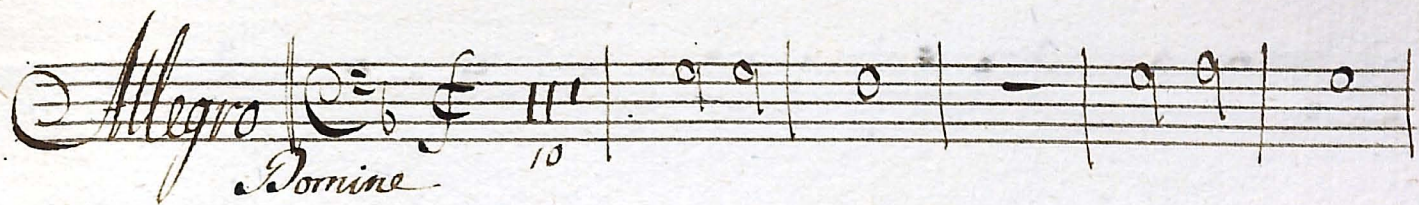




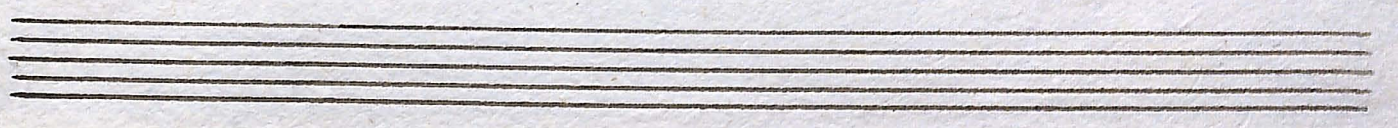
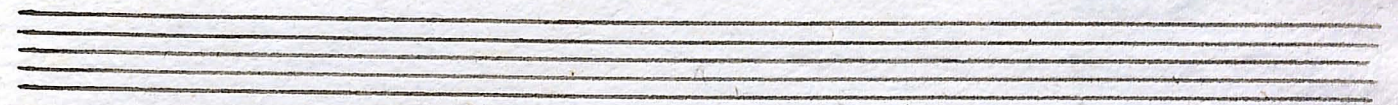


*Gratias agimus Tace. Amen al Domine Deus*









*Segue il Credo*



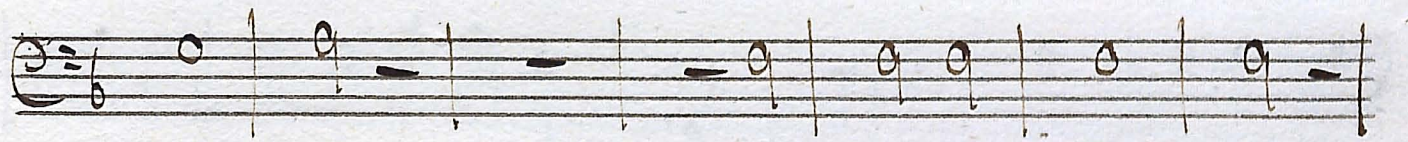
# *Credo*

*All<sup>o</sup>* 













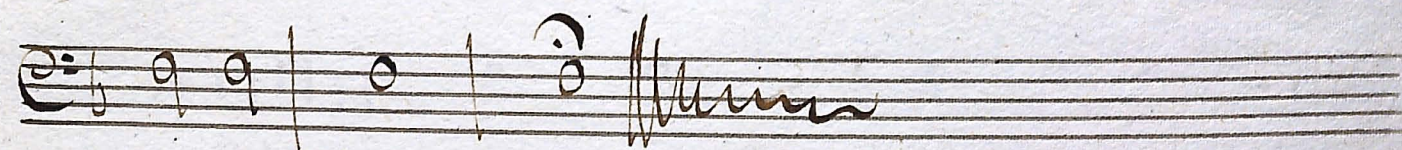
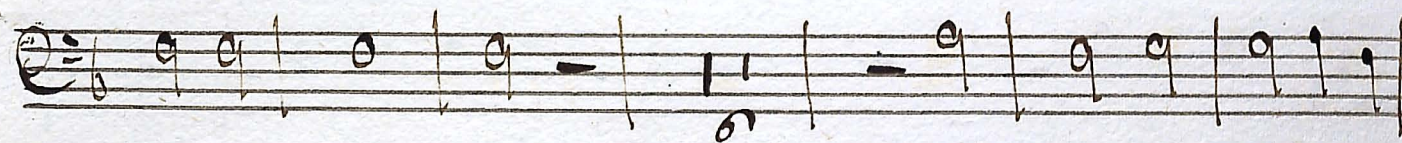








*Et incarnatus est Tace. Fino al Resurrexit*



*Segue et in Spiritu*



*Allegro* *Et in Spiritus*

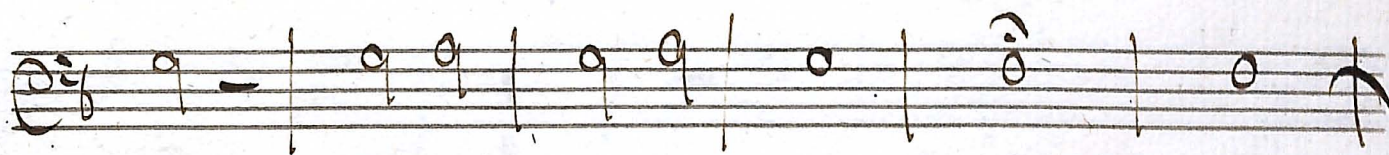
Handwritten musical score for 'Allegro Et in Spiritus'. The score consists of eight staves. The first staff begins with a treble clef, a key signature of one flat (B-flat), and a common time signature (C). The tempo 'Allegro' and the text 'Et in Spiritus' are written above the first staff. The music is written in a cursive, handwritten style. The first staff contains a whole rest followed by a half note G, a quarter note A, a quarter note B-flat, and a whole rest. The second staff contains a half note G, a quarter note A, a quarter note B-flat, a whole rest, a half note G, a quarter note A, a quarter note B-flat, and a whole rest. The third staff contains a half note G, a quarter note A, a quarter note B-flat, a whole rest, a half note G, a quarter note A, a quarter note B-flat, and a whole rest. The fourth staff contains a half note G, a quarter note A, a quarter note B-flat, a whole rest, a half note G, a quarter note A, a quarter note B-flat, and a whole rest. The fifth staff contains a half note G, a quarter note A, a quarter note B-flat, a whole rest, a half note G, a quarter note A, a quarter note B-flat, and a whole rest. The sixth staff contains a half note G, a quarter note A, a quarter note B-flat, a whole rest, a half note G, a quarter note A, a quarter note B-flat, and a whole rest. The seventh staff contains a half note G, a quarter note A, a quarter note B-flat, a whole rest, a half note G, a quarter note A, a quarter note B-flat, and a whole rest. The eighth staff contains a half note G, a quarter note A, a quarter note B-flat, a whole rest, a half note G, a quarter note A, a quarter note B-flat, and a whole rest. The score ends with a double bar line and a wavy line.

*Presto* *Et vita venturi*

Handwritten musical score for 'Presto Et vita venturi'. The score consists of three staves. The first staff begins with a treble clef, a key signature of one flat (B-flat), and a common time signature (C). The tempo 'Presto' and the text 'Et vita venturi' are written above the first staff. The music is written in a cursive, handwritten style. The first staff contains a whole rest followed by a half note G, a quarter note A, a quarter note B-flat, and a whole rest. The second staff contains a half note G, a quarter note A, a quarter note B-flat, a whole rest, a half note G, a quarter note A, a quarter note B-flat, and a whole rest. The third staff contains a half note G, a quarter note A, a quarter note B-flat, a whole rest, a half note G, a quarter note A, a quarter note B-flat, and a whole rest. The score ends with a double bar line and a wavy line.

*Volto*





*Fine del Credo*

